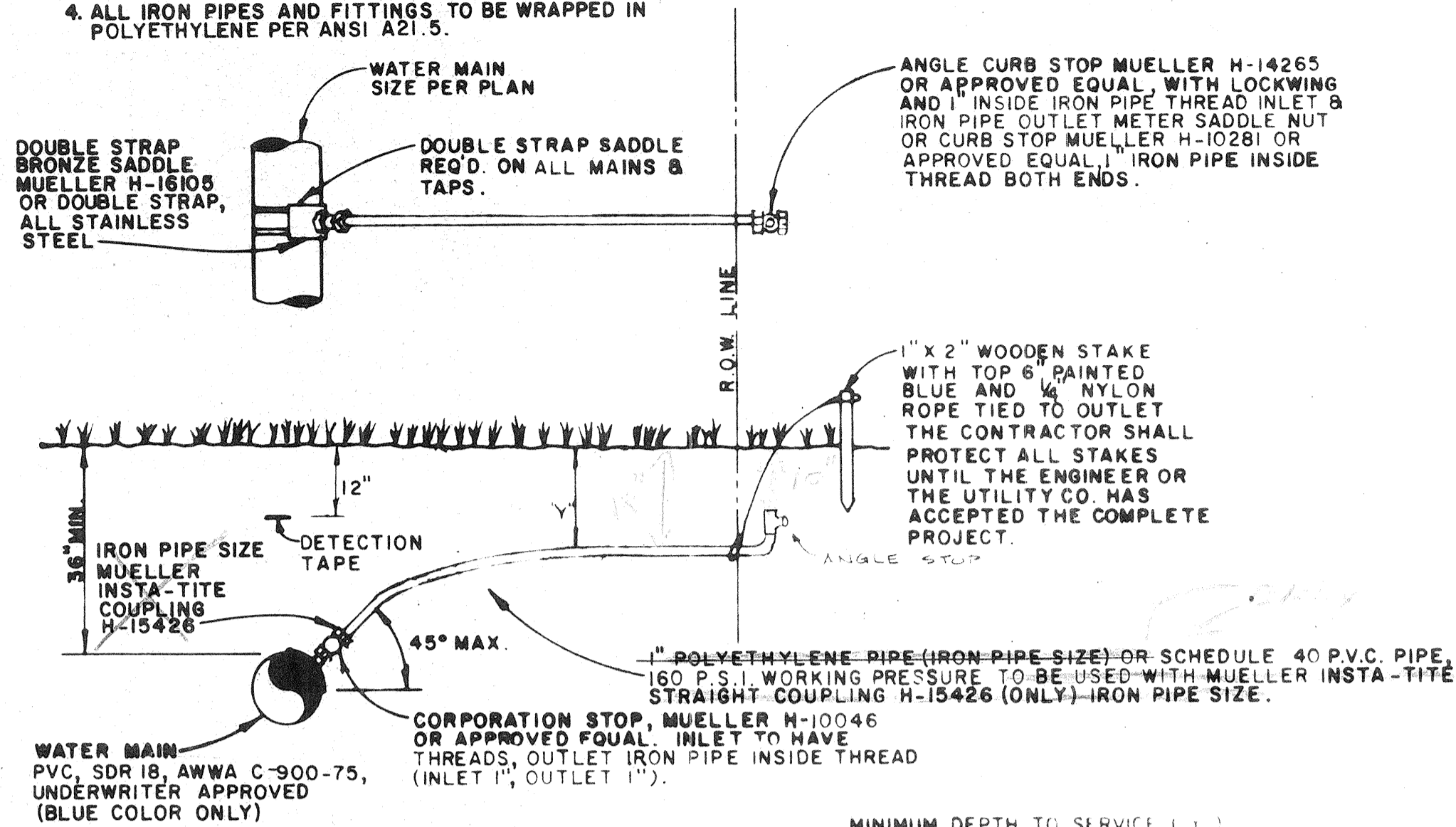


NOTES:

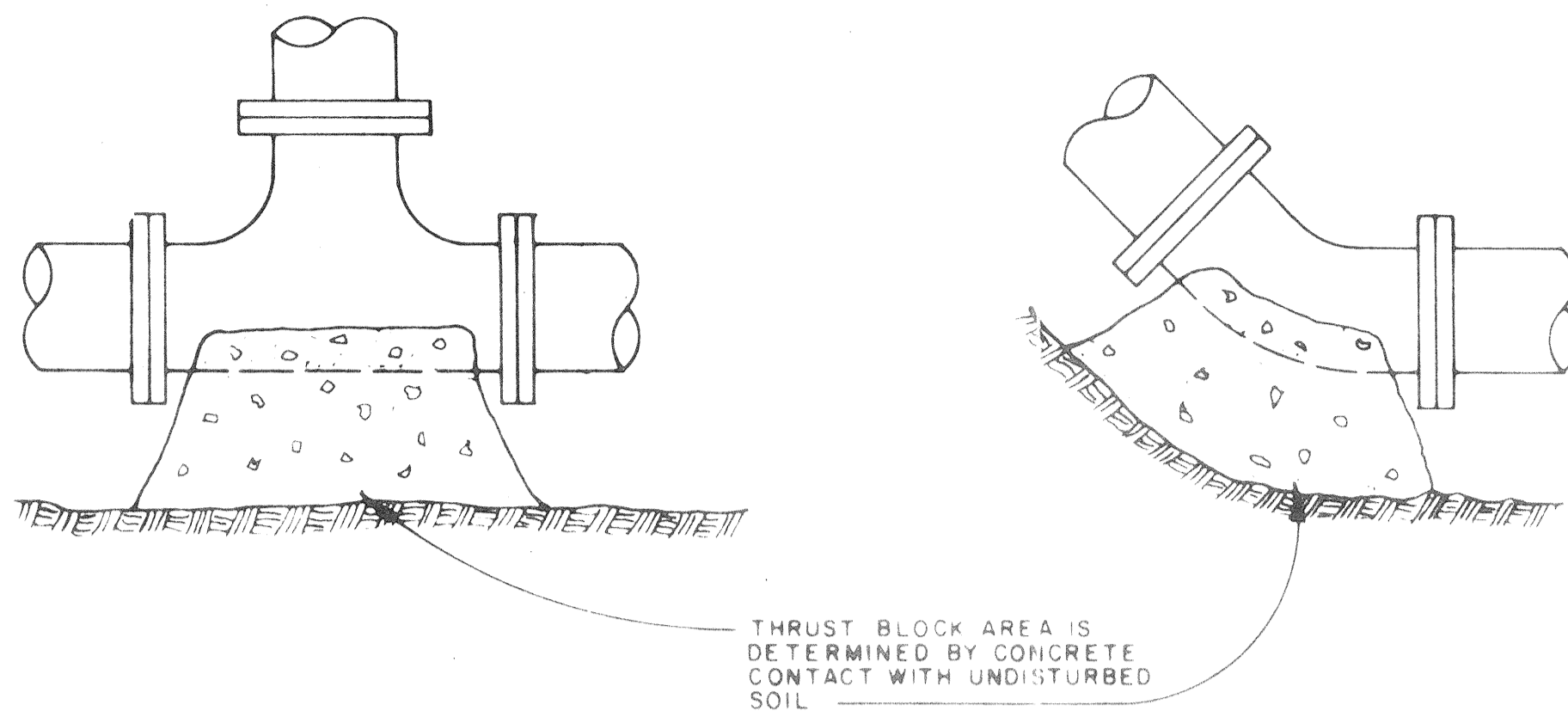
1. TAPS SHALL NOT BE CLOSER THAN 2 FT. APART OR CLOSER THAN 2 FT. TO ANY JOINT.
2. MULTIPLE TAPS SHALL BE STAGGERED FROM EACH OTHER AND NOT IN LINE LONGITUDINALLY.
3. STAMP CURB WITH A 2" W WHERE SERVICE LINE CROSSES.
4. ALL IRON PIPES AND FITTINGS TO BE WRAPPED IN POLYETHYLENE PER ANSI A21.5.



MINIMUM DEPTH TO SERVICE

UNDER ROADS	24"
IN R/W (GRASS AREAS)	18"
WITHIN 3' OF CURB STOP	12"

SINGLE TAP WATER SERVICE



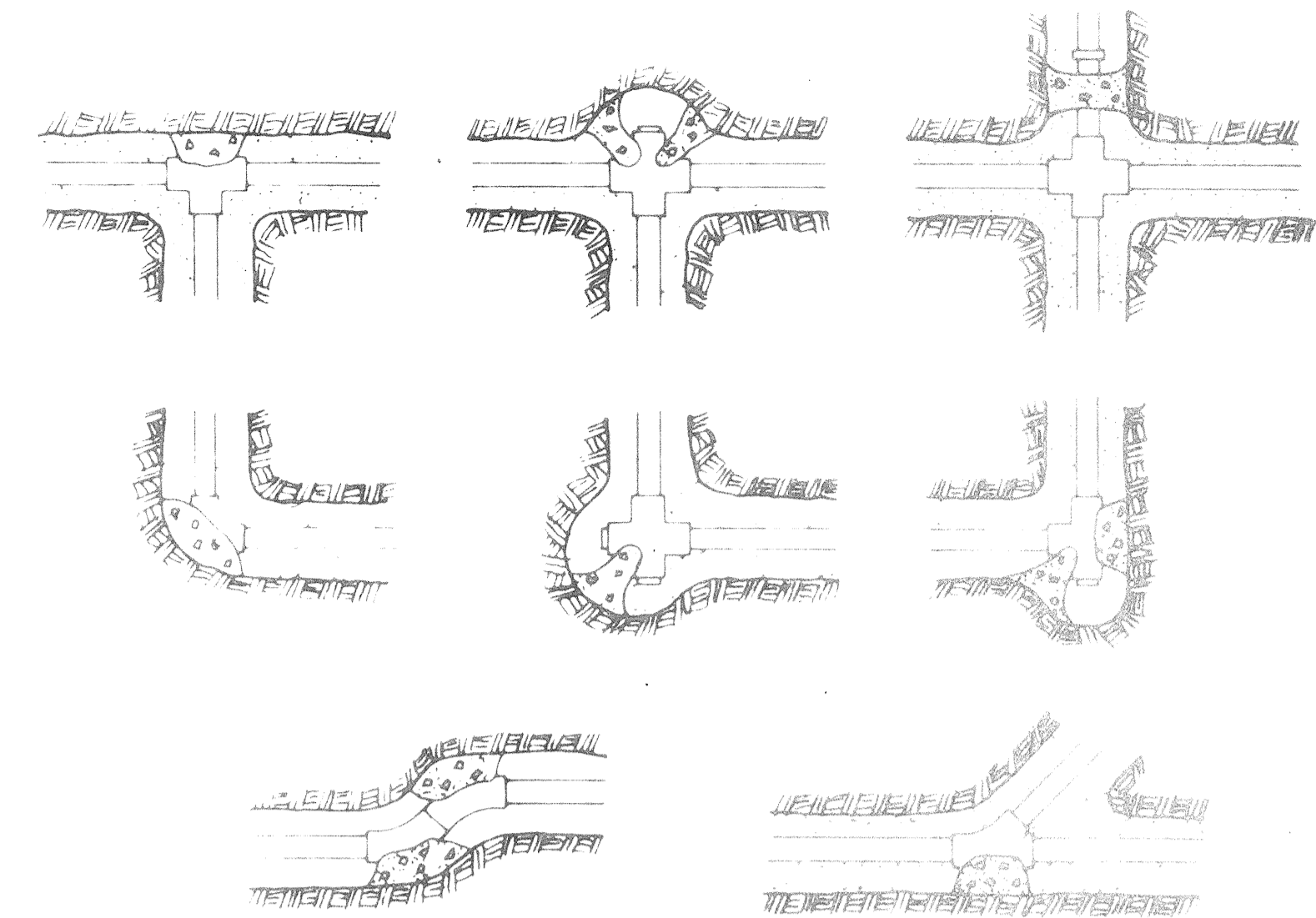
PRECAST THRUST BLOCKS ARE NOT ACCEPTABLE

NOTES:

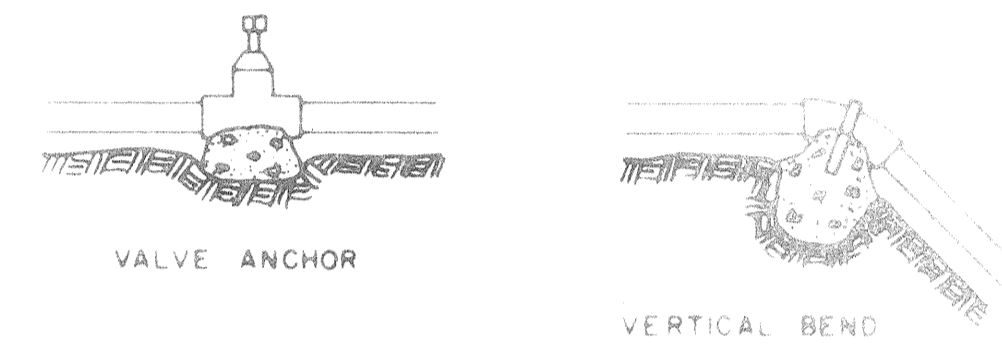
1. REMOVE ALL LOOSE MATERIAL BEFORE POURING THRUST BLOCKS. REMOVE ALL MUCK OR OTHER UNDESIRABLE MATERIAL AND REPLACE WITH SAND. POUR THRUST BLOCK AGAINST FIRM UNDISTURBED SOIL USING 2500 P.S.I. CONCRETE.
2. KEEP CONCRETE OFF ALL FITTINGS AND JOINTS BY WRAPPING WITH VISQUEEN.
3. DO NOT COVER THRUST BLOCKS UNTIL INSPECTED BY THE ENGINEER.
4. ASSUMED SOIL BEARING CAPACITY OF 2000 LBS. PER SQ. FT.; ENGINEER MAY ADJUST AREA BASED UPON DIFFERING FIELD CONDITIONS.
5. ALL CONSTRUCTION SHALL BE IN ACCORDANCE WITH THE PLAN DRAWINGS.

THRUST BLOCK AREAS IN SQUARE FEET

PIPE SIZE	TEE	90° BEND	45° BEND	22 1/2° BEND
4"	1.8	2.5	1.4	0.7
6"	4.0	5.5	3.0	1.5
8"	7.0	10.0	5.5	3.0
10"	10.0	14.0	7.0	5.0
12"	15.0	20.0	10.0	7.0
14"	21.0	28.4	15.4	8.8
16"	27.8	37.0	20.0	10.2
18"	35.0	46.8	25.4	12.9
20"	43.4	57.9	31.2	16.0



PLAN VIEWS

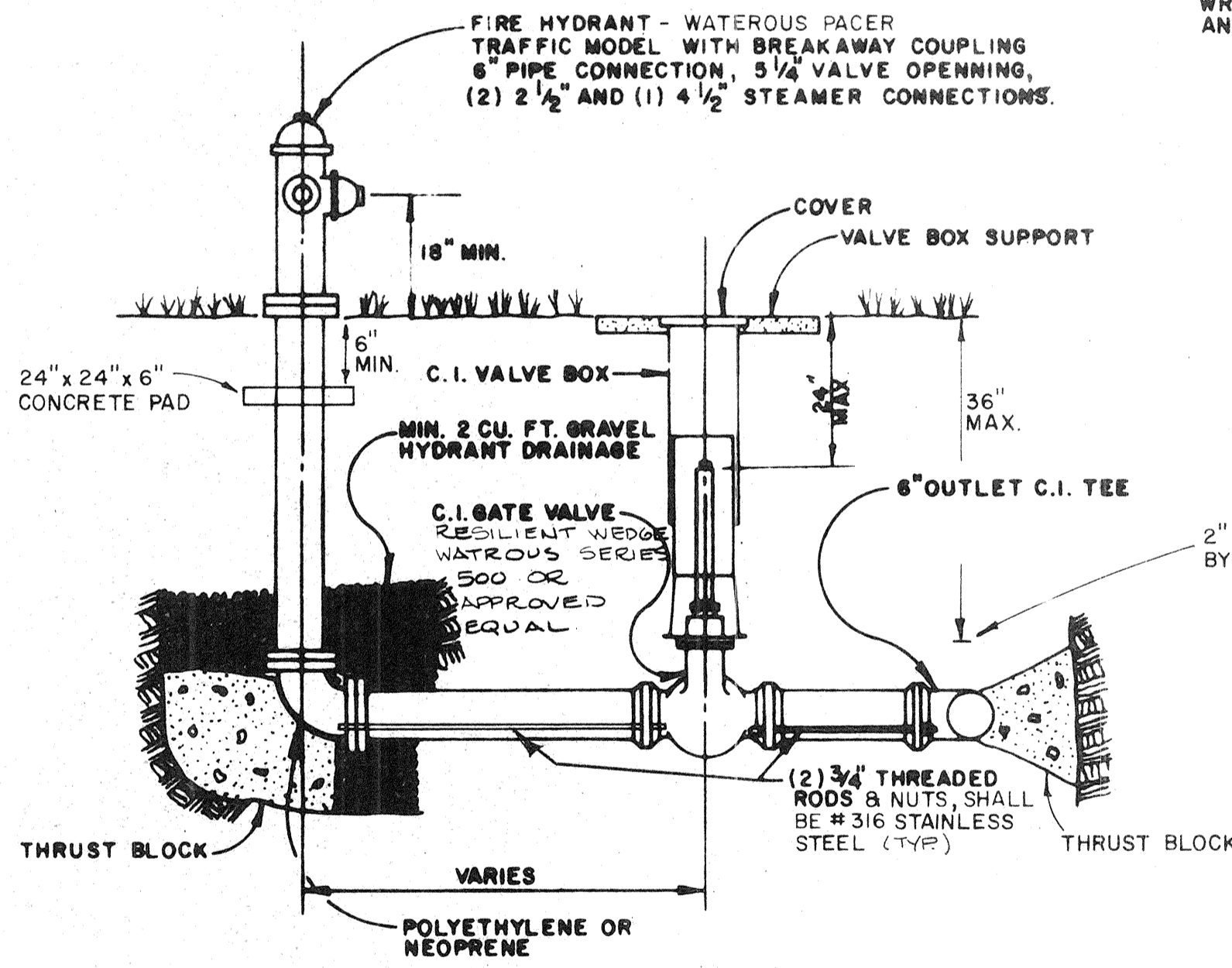


THRUST BLOCK LOCATIONS

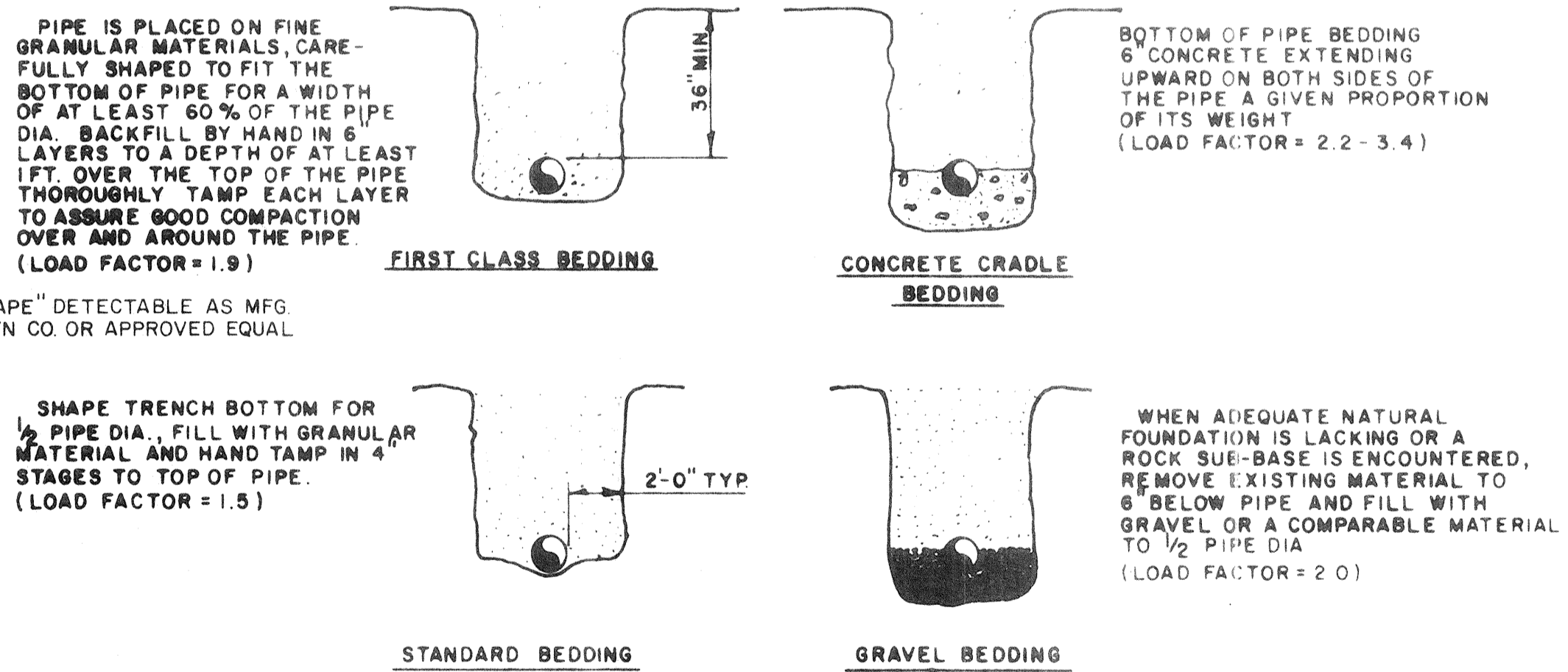
NOTE:

ALL IRON PIPE AND FITTINGS TO BE WRAPPED IN POLYETHYLENE PER ANSI A21.5.

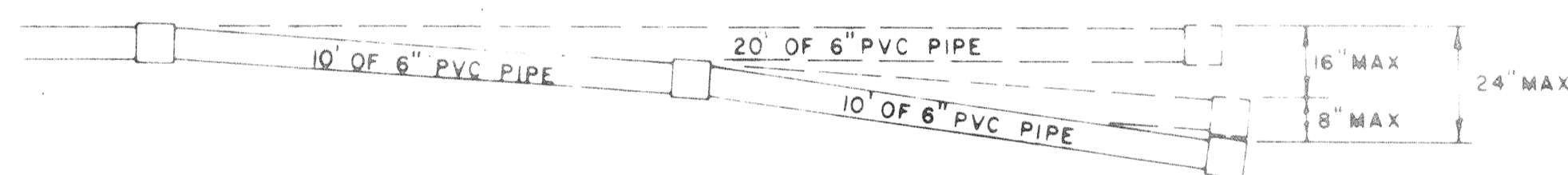
PRESSURE MAIN THRUST BLOCKS



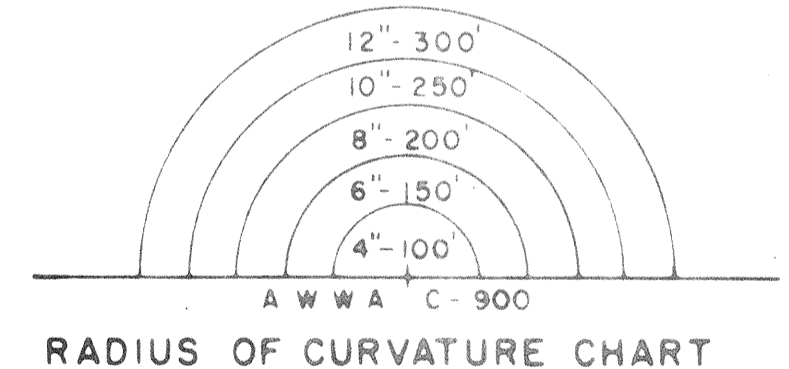
HYDRANT DETAILS



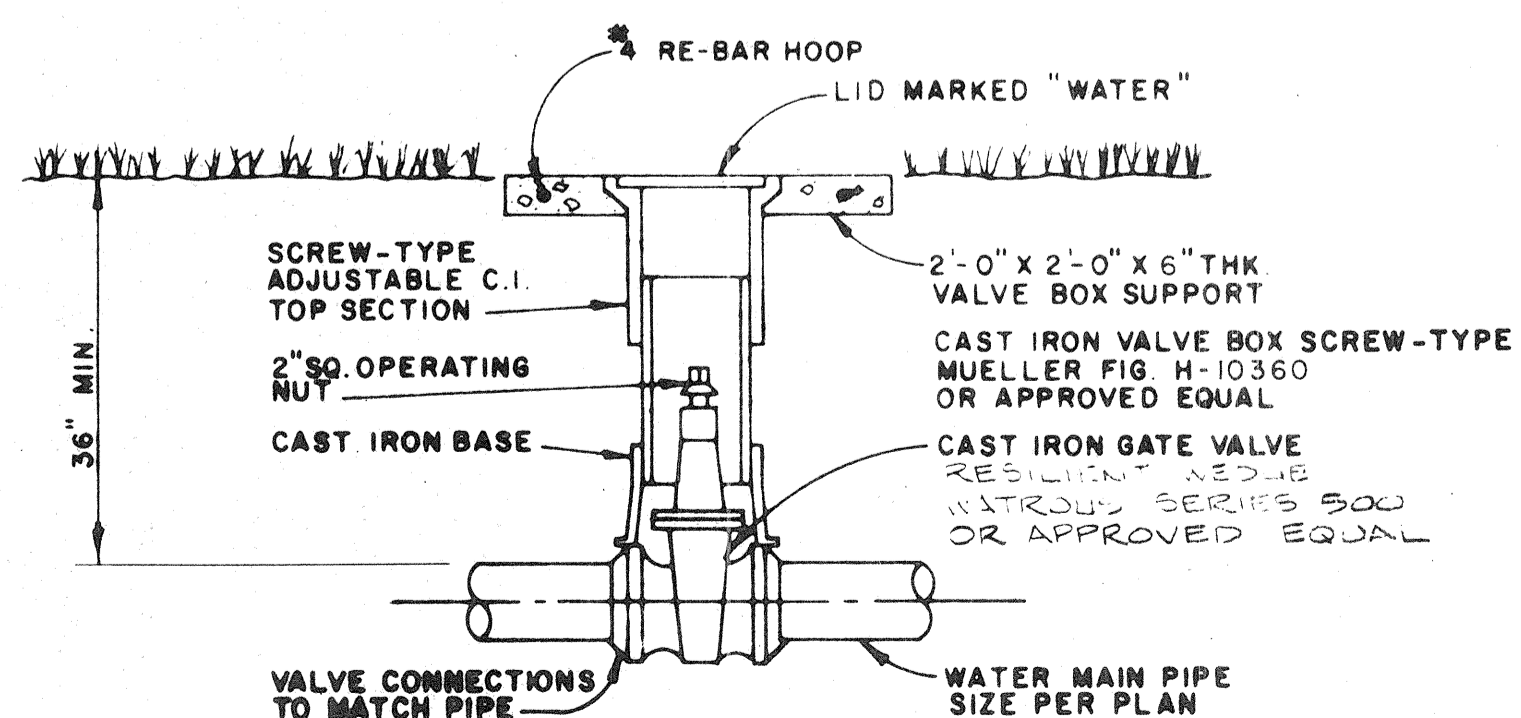
PIPE BEDDING DETAILS



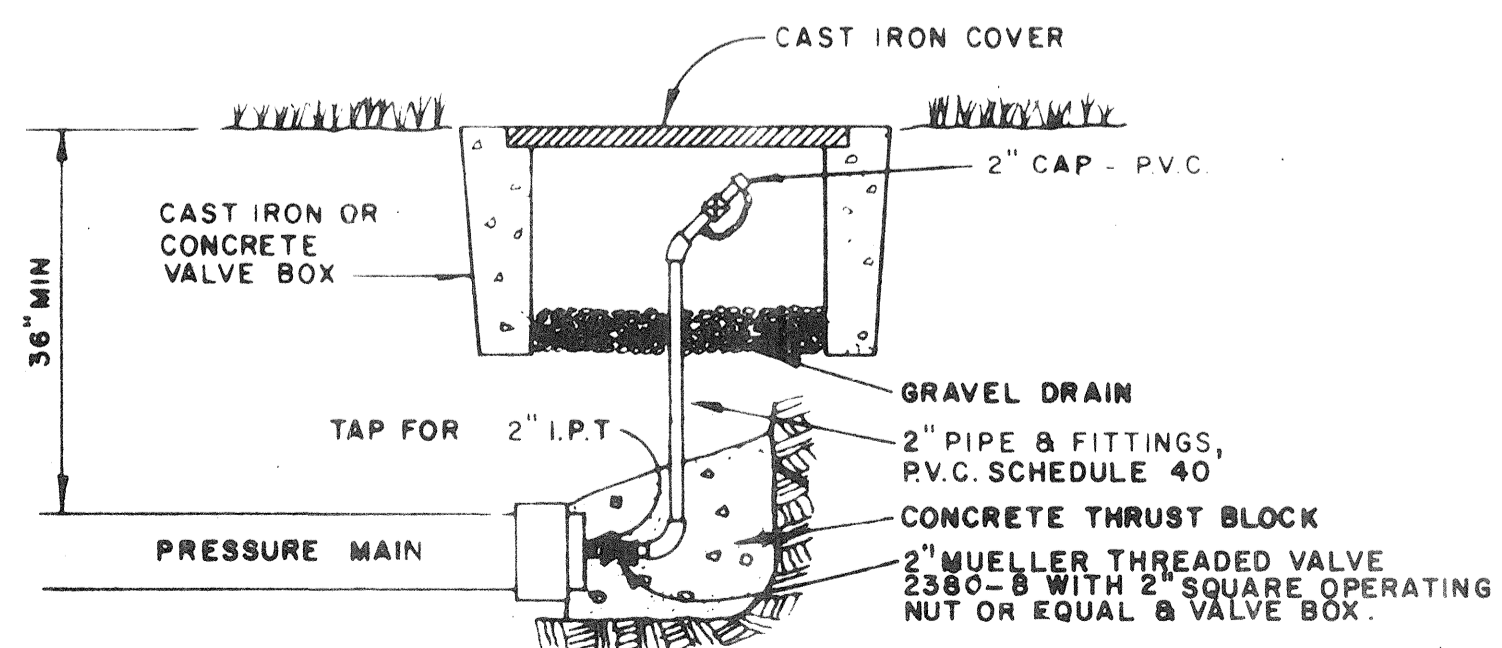
C I M J PIPE			A W W A C-900	
SIZE INCHES	DEFLECTION DEGREES	OFFSET IN / 10'	SIZE INCHES	OFFSET IN / 10'
3"- 4"	8°- 18'	17.5"	4"	23"
6"	7°- 7'	15.0"	6"	16"
8"- 12"	5°- 21'	10.8"	8"	12"
14"- 16"	3°- 35'	9.5"	10"	9"
18"- 20"	3°- 0'	6.3"	12"	8"



PIPE CURVE OFFSETS



CAST IRON GATE VALVE



TYPICAL BLOW OFF DETAIL

MISCELLANEOUS WATER DETAILS

FOR JOHN BAILEY, 7215 BRIGHTON STREET, SARASOTA, FLORIDA 34243 PH: 355-0452

CONSTRUCTION PLANS / WATER DISTRIBUTION DETAILS

TRITON COVE

LONGBOAT KEY, FLORIDA

STEVEN M. HOUGHTON, P.E.

CONSULTING ENGINEER

SARASOTA, FLORIDA

DATE: JULY 1989

SCALE: AS SHOWN

DRWN: CHKD

TELEPHONE: 922-6256

SMH: ALP

FLA. CERT. NO. 22517

REVISION

LTR

DRAWING NUMBER: 8908

OCT 02 1989

SHEET 2 OF 3

REVISION