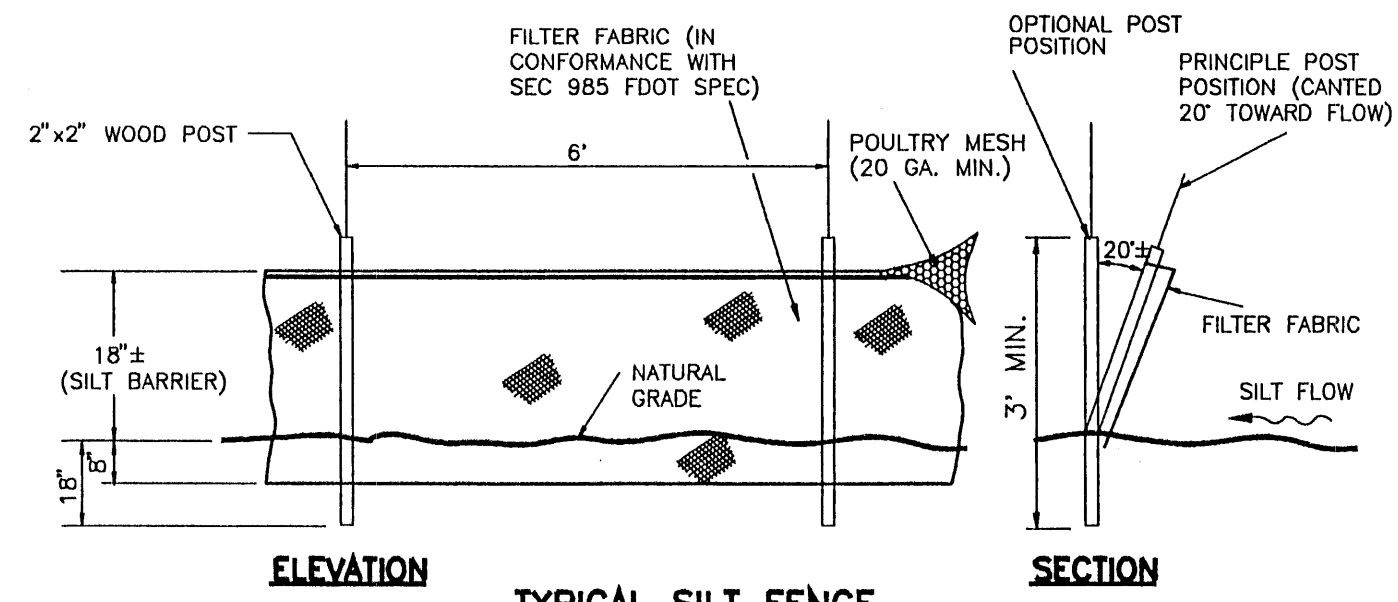
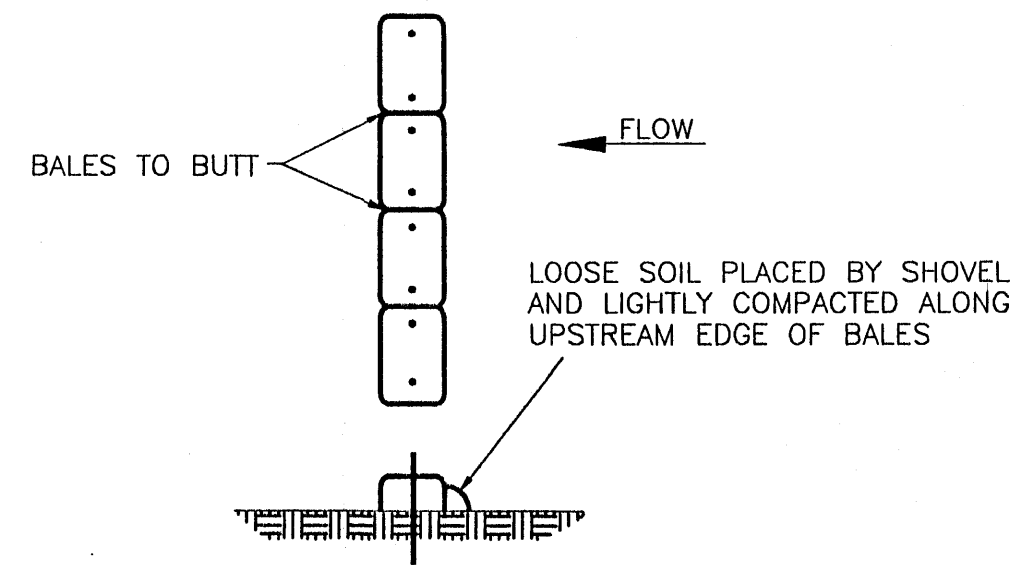


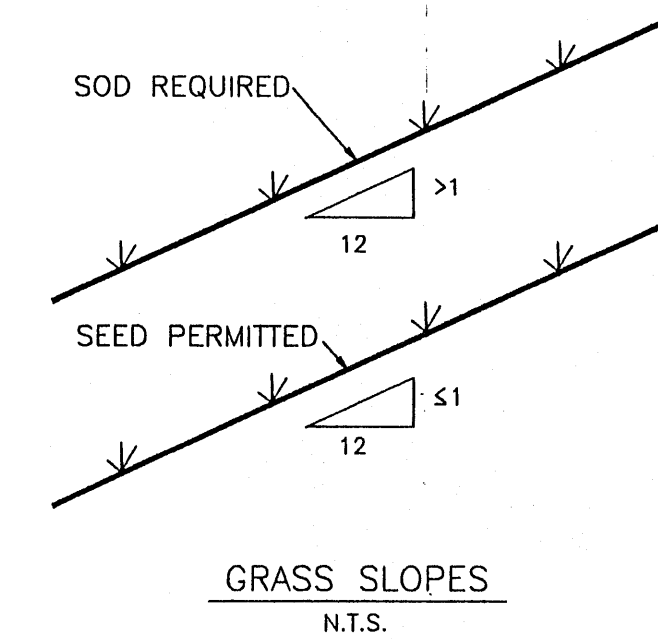
DETAIL 1



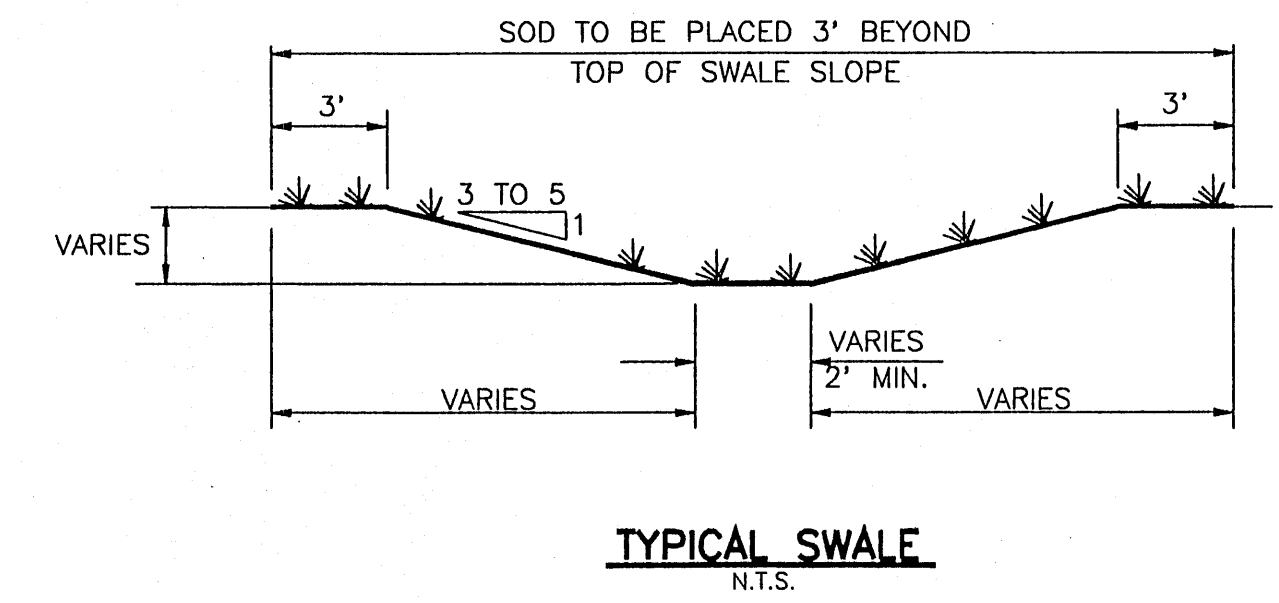
DETAIL 2



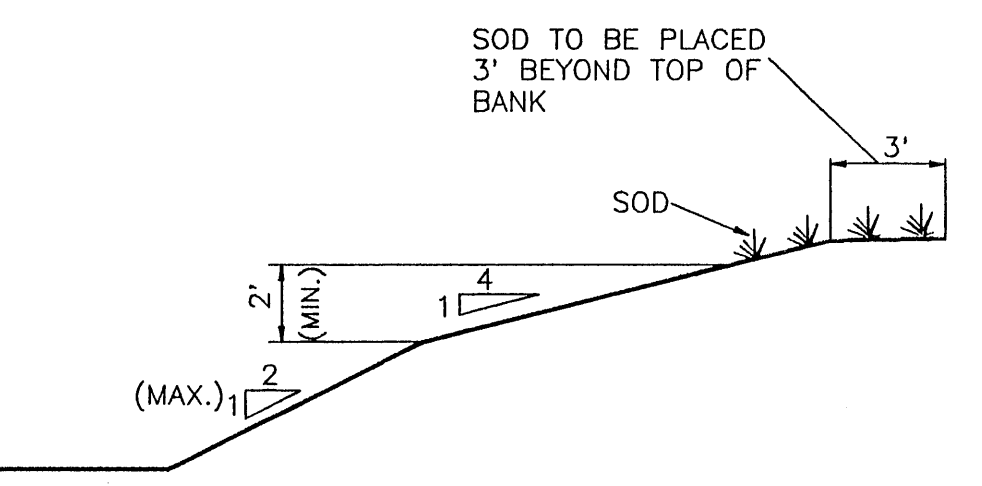
DETAIL 3



DETAIL 4

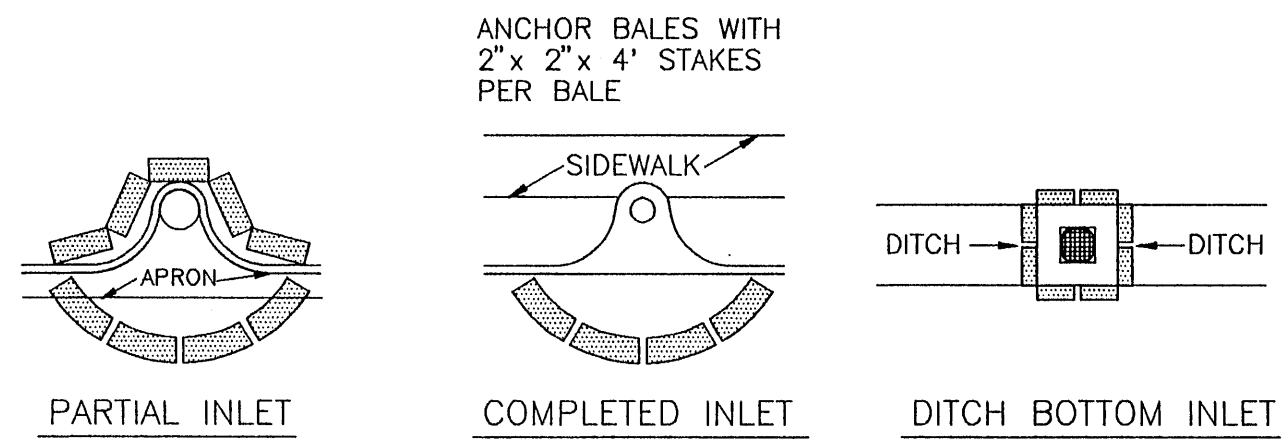


DETAIL 5



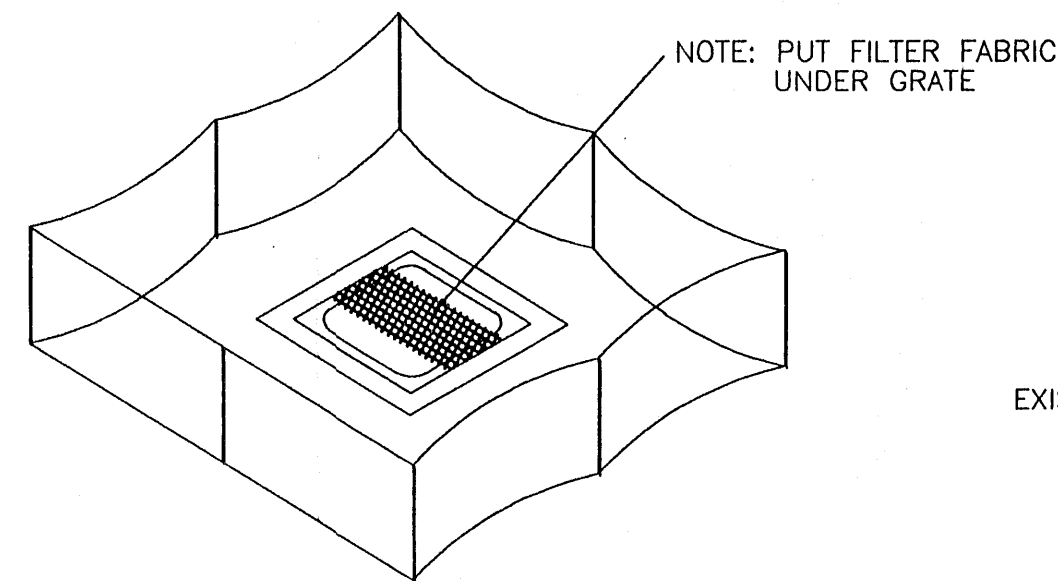
TYPICAL RETENTION/DETENTION POND SECTION

DETAIL 6



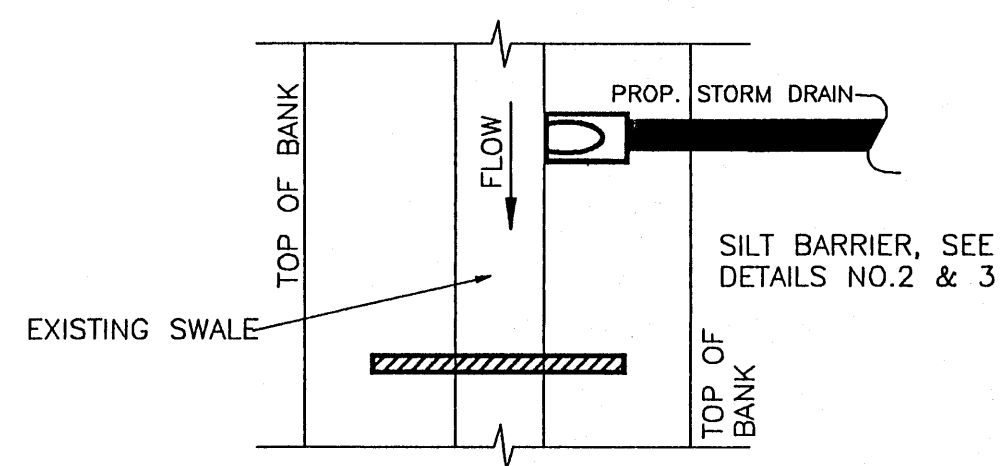
PROTECTION AROUND INLETS

DETAIL 7



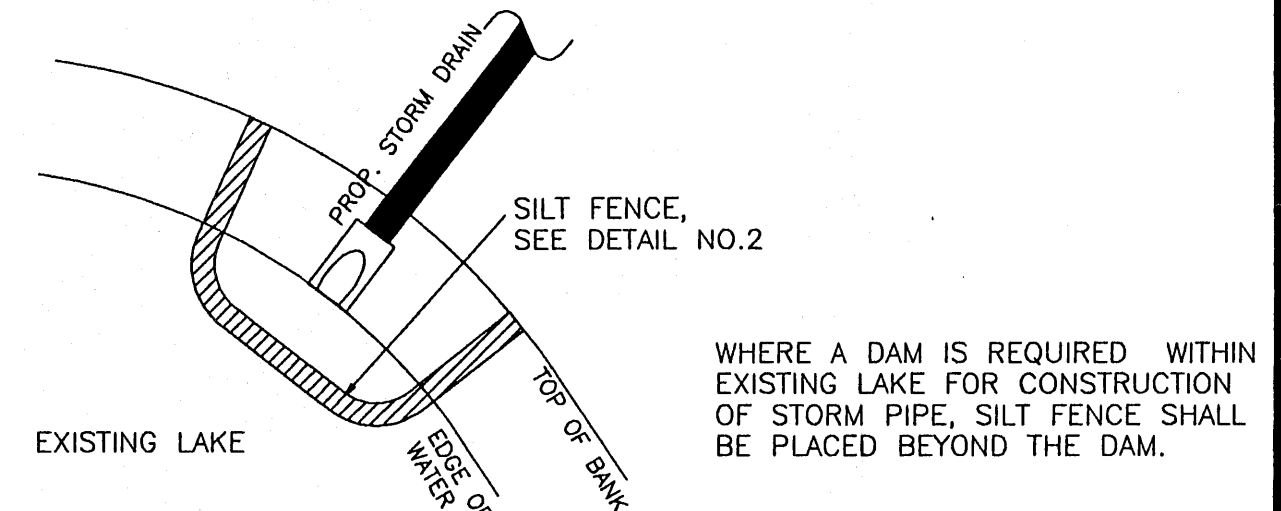
STAKED SILT BARRIER OR SILT FENCE PROTECTION AROUND DITCH BOTTOM INLETS

DETAIL 8



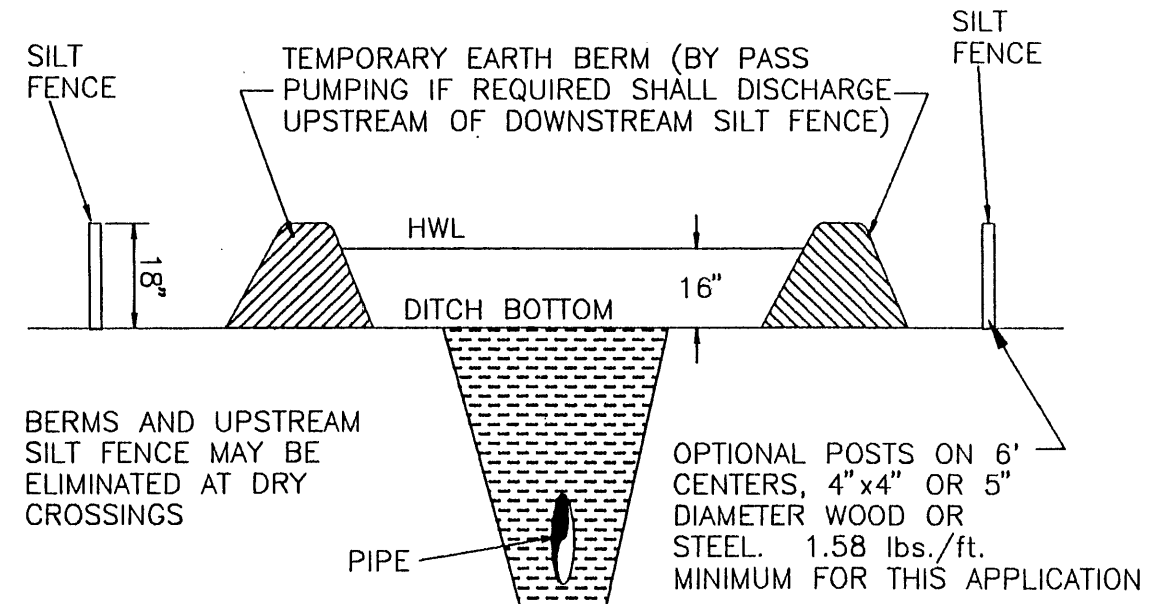
SILT BARRIER AT CONNECTION OF STORM PIPE TO EXISTING SWALE

DETAIL 9



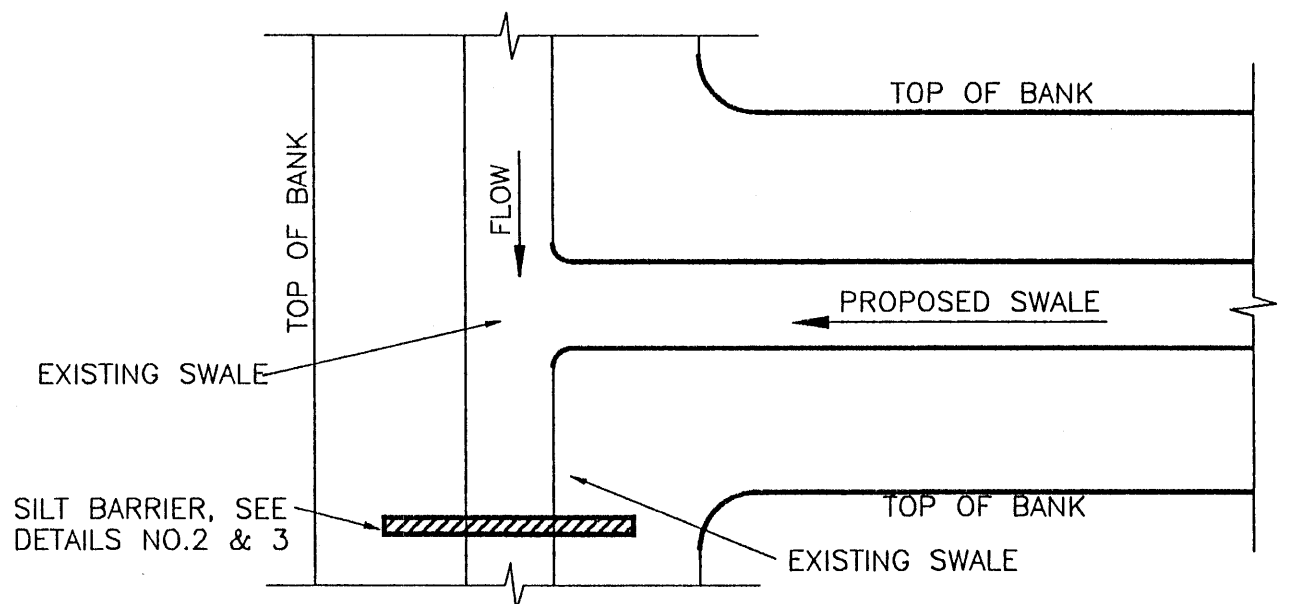
SILT BARRIER AT CONNECTION OF STORM PIPE TO EXISTING LAKE

DETAIL 10



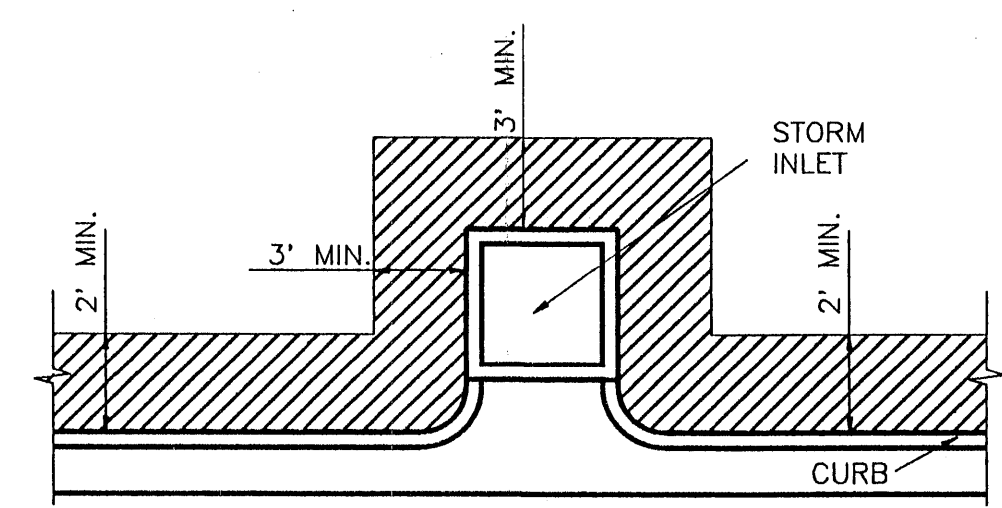
UNDERGROUND PIPE CROSSINGS

DETAIL 11



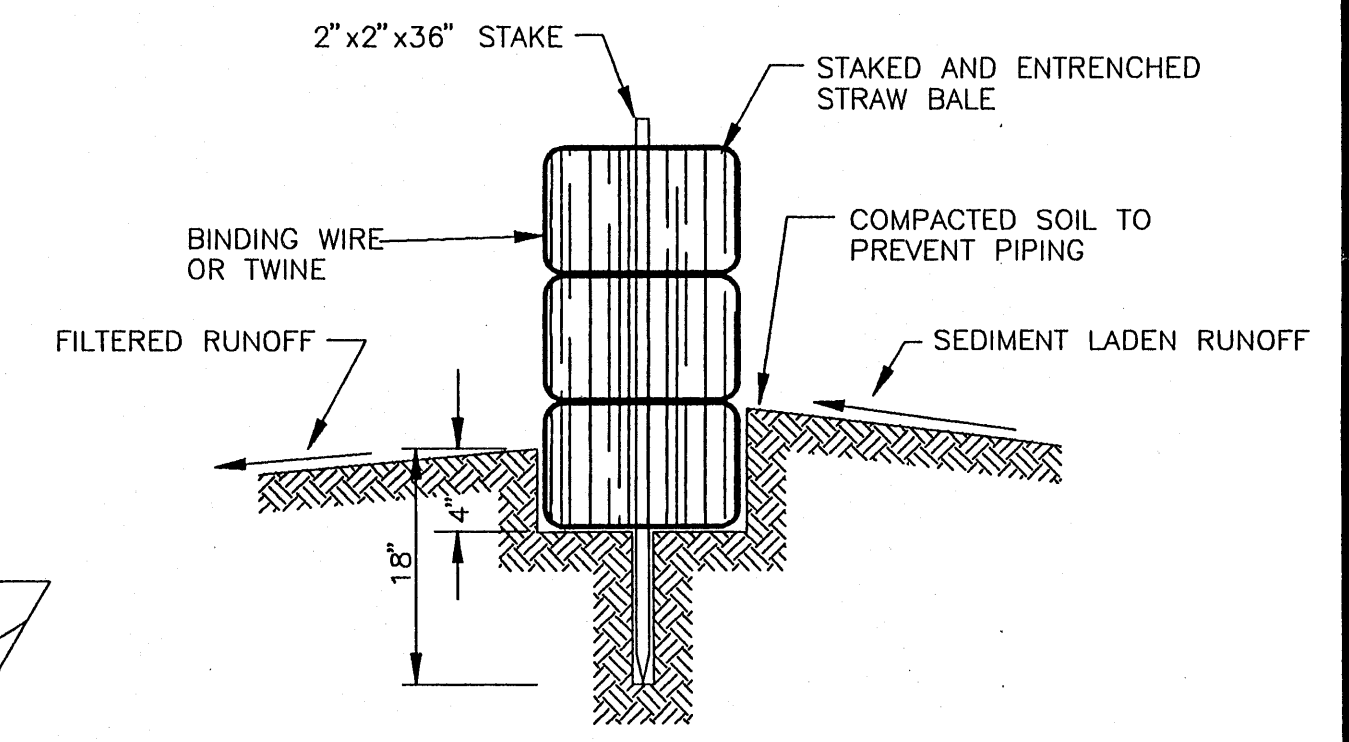
SILT BARRIER AT CONNECTION OF SWALE TO EXISTING SWALE

DETAIL 12

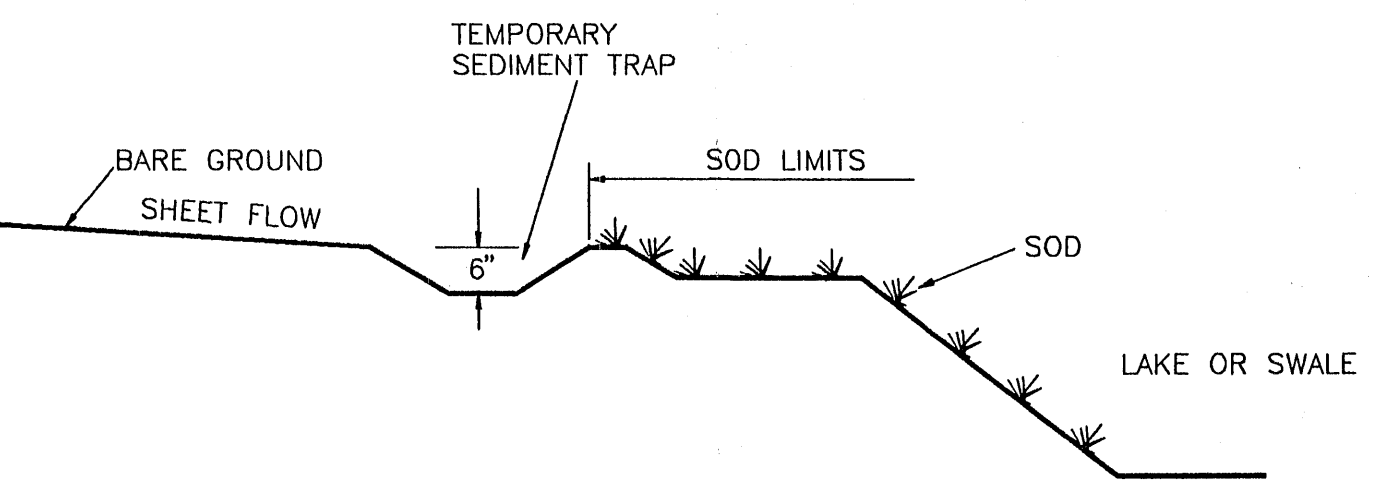


SOD ALONG CURB AND AROUND INLET

DETAIL 13

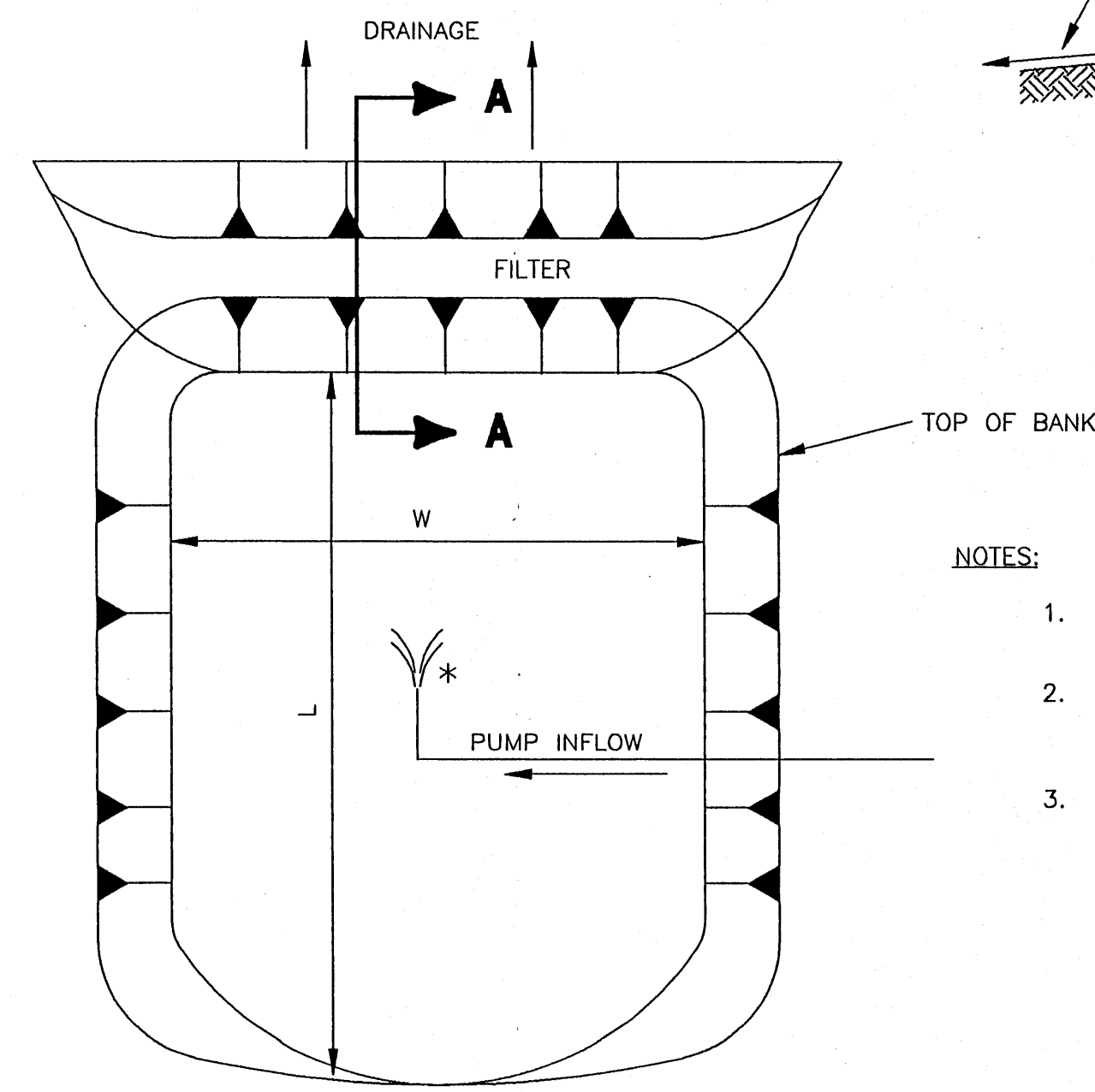


SECTION A-A



SILT BARRIER AT CONNECTION OF SWALE TO EXISTING SWALE

DETAIL 14



DEWATERING SEDIMENT AND EROSION CONTROL SUMP

DETAIL 15

- NOTES:**
- EROSION AND SEDIMENT CONTROL APPLICATIONS MUST BE MAINTAINED FOR ENTIRE DURATION OF PROJECT OR UNTIL SODDING AND/OR GRASS IS ESTABLISHED AS DIRECTED BY ENGINEER.
  - DURING CONSTRUCTION ALL MEASURES FOR EROSION AND SEDIMENT CONTROL WILL BE TAKEN, INCLUDING BUT NOT LIMITED TO, USE OF TURBIDITY SCREENS, MULCHING, HAY BALES, AND SOD PLACEMENT AT THE EARLIEST POSSIBLE TIME AFTER EXCAVATION/GRADING. ALL SILTATION/EROSION CONTROL MEASURES WILL BE TAKEN WHICH MEET THE STATE OF FLORIDA D.O.T. INDEX NO. 102 & 103.
  - EROSION AND SEDIMENT CONTROL MEASURES FOR FLOWING STREAMS AND TIDAL CREEKS MAY BE EITHER FLOATING (NOT SHOWN), FENCE OR STAKED TYPES OR ANY COMBINATIONS OF TYPES THAT WILL SUIT SITE CONDITIONS AND MEET EROSION & SEDIMENT CONTROL AND WATER QUALITY REQUIREMENTS. INCORPORATED IN VARIOUS ENVIRONMENTAL PERMITS FOR THIS JOB. THE CONTROL MEASURES WILL BE AT THE CONTRACTORS OPTION. MEASURES SHOWN ON THESE PLANS ARE FOR INFORMATION PURPOSES ONLY. COSTS OF EROSION CONTROL ITEMS TO BE INCLUDED IN CONTRACT PRICE OF INLETS, PIPING, STORMWATER MANAGEMENT SYSTEM.
  - EROSION & SEDIMENT CONTROL MEASURES SHALL BE PLACED TO CONTAIN ALL POINTS OF DISCHARGE TO SURFACE WATERS INCLUDING CURB INLETS, DITCH BOTTOM INLETS, DITCHES, AND DOWNSTREAM PORTIONS OF STREAMS AND TIDAL WATERS ADJACENT TO CONSTRUCTION.
  - PRESERVED AREAS SHALL BE PROTECTED PRIOR TO START OF ANY CLEARING OR SITEWORK CONSTRUCTION. PROTECTION SHALL CONSIST OF A SILT BARRIER ERECTED ALONG THE PERIMETER OF THE PRESERVED WETLAND AS SHOWN IN DETAIL NO.1. SILT BARRIERS USED FOR WETLAND PROTECTION SHALL REMAIN IN PLACE UNTIL ALL CONSTRUCTION IS COMPLETE.
  - SILT BARRIERS ERECTED DURING CONSTRUCTION SHALL BE MAINTAINED SUCH THAT CASUAL WATER WILL DRAWDOWN WITHIN 72 HOURS. AT THE END OF EACH DAY ANY SILT WHICH HAS ACCUMULATED BEHIND THE BARRIERS SHALL BE REMOVED PROMPTLY.
  - CLEARED SITE DEVELOPMENT AREAS NOT CONTINUALLY SCHEDULED FOR CONSTRUCTION ACTIVITIES SHALL BE COVERED WITH HAY OR OVERSEEDED AND PERIODICALLY WATERED SUFFICIENT TO STABILIZE THE TEMPORARY GROUND COVER.
  - ALL SPOIL MATERIALS AND REFUSE RESULTING FROM THE CLEARING AND GRUBBING OPERATION SHALL BE TRANSPORTED AND DISPOSED BY THE CONTRACTOR AT AN APPROVED OFF-SITE LOCATION.
  - THE CONTRACTOR SHALL NOT CLEAR OR GRUB ANY AREA BEYOND THE LIMITS OF CONSTRUCTION AS LAID OUT BY THE ENGINEER.
  - WIND EROSION SHALL BE CONTROLLED BY UTILIZING WATER TRUCKS AND ANTI-DRAFT FENCING IF REQUIRED. ANTI-DRAFT FENCING SHALL BE ERECTED AS SHOWN IN DETAIL NO.2 EXCEPT THE MINIMUM HEIGHT WILL BE 4 FEET.
  - WHERE REQUIRED TO PREVENT EROSION FROM SHEET FLOW ACROSS BARE GROUND FROM A SWALE, A TEMPORARY SEDIMENT SUMP SHALL BE CONSTRUCTED.
  - THE CONTRACTOR SHALL PLACE SOD AROUND ALL STORM INLETS AS SHOWN AND A 2 FOOT WIDE STRIP BEHIND ALL EDGE OF PAYMENT AS SHOWN IN DETAIL NO.13. SOD SHALL BE PLACED PRIOR TO REMOVAL OF THE SILT BARRIERS.
  - HEAVY CONSTRUCTION EQUIPMENT PARKING AND MAINTENANCE AREAS SHALL BE DESIGNED TO PREVENT OIL, GREASE, AND LUBRICANTS FROM MIGRATING OUT OF THE DESIGNATED PARKING AREA. IF ANY SPILLS OCCUR, THE CONTRACTOR SHALL USE ABSORBANT FILTER PADS TO CLEAN UP THE SPILL AS SOON AS POSSIBLE.
  - HEAVY CONSTRUCTION EQUIPMENT WILL NOT BE USED WITHIN THE PRESERVE AREAS. ONLY MANUAL LABOR WILL BE PERMITTED.
  - THE CONTRACTOR WILL PERFORM DAILY INSPECTIONS TO ASSURE CONTINUED OPERATION OF TURBIDITY CONTROL MEASURES AND WILL PERFORM CORRECTIONS AS NEEDED.

DATE:	12-29-97
DRAWING SCALE:	AS NOTED
DATE:	
REVISION:	

**ESBER & ASSOCIATES**  
Engineers - Surveyors  
5914 Palmer Blvd. - Sarasota, FL 34232  
(941)379-8831 - Fax (941)379-0556

APPROVED:	DATE:
ENGINEER OF RECORD:	DATE:
SHEET NO.:	NOT ISSUED FOR CONSTRUCTION
PROJECT NO.:	F10016
SHEET NO.:	C-6



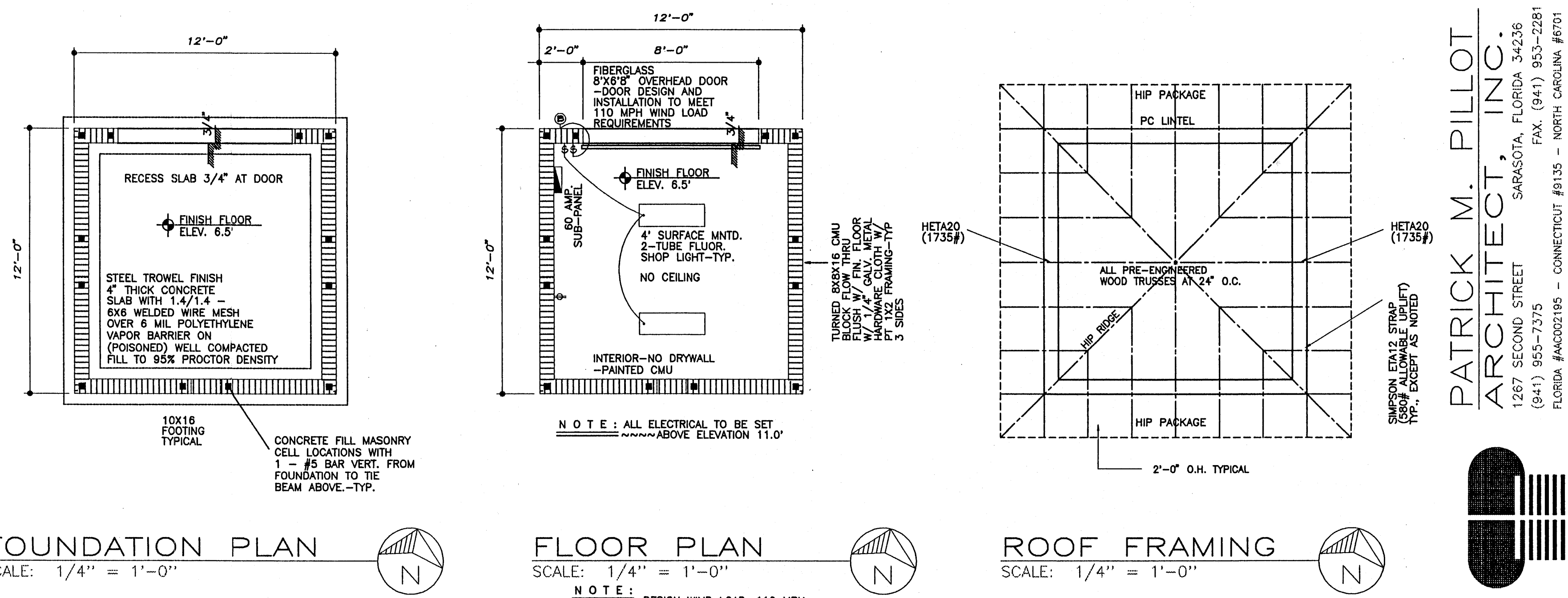


**STRUCTURAL NOTES :**

- FOUNDATION DESIGN IS BASED ON A SOIL BEARING CAPACITY OF 2,000 POUNDS PER SQUARE FOOT. MINIMUM PRIOR TO ANY WORK, THE CONTRACTOR SHALL ENGAGE A SOILS LABORATORY TO CONDUCT TEST BORINGS TO DETERMINE THE CONSISTENCY OF SUBSURFACE SOIL AND ABSENCE OF ANY UNSATURABLE MATERIAL. IF ANY MATERIAL OTHER THAN CLEAN, COMPACT, WELL GRADED SAND IS PRESENT, INCONSISTENT MATERIAL SHALL BE REMOVED AND REPLACED WITH CLEAN, COMPACTED FILL AT THE DIRECTION OF THE SOILS LABORATORY.
- ALL FOUNDATION AND SLAB CONCRETE SHALL BE 3000 P.S.I. AT 28 DAYS
- WELDED WIRE MESH (W.W.M.) SHALL CONFORM TO ASTM DESIGNATION A 185-72. WELDED WIRE SHALL BE OF 60 K.S.I. STEEL.
- STEEL REINFORING FOR CONC. SHALL BE 40 K.S.I. MINIMUM, EXCEPT AS NOTED OTHERWISE.
- ALL CONTROL JOINTS SHALL BE SAWN WITHIN 12 HOURS OF CONC. POUR.
- JOINT FILLERS: ASTM D175 ASPHALT IMPREGNATED CELLULOSE FIBER, THICKNESS AS NOTED ON DRAWINGS.
- SLAB ON GRADE SHALL BE STEEL TROWEL FINISHED 4" THICK REINFORCED WITH 6X6-W1.4/W1.4 WELDED WIRE MESH OVER 6 MIL POLYETHYLENE VAPOR BARRIER. LAP 6" MIN. TAPE JOINTS.
- CLEAN OUT OPENINGS SHALL BE PROVIDED AT THE BOTTOM OF ALL GROUTED CELLS AT EACH LIFT FOR FIELD INSPECTION. OPENINGS SHALL BE COVERED AFTER INSPECTION AND BEFORE GROUTING. WALLS SHALL CURE A MINIMUM OF 24 HOURS PRIOR TO FILLING GROUTED CELLS.
- CONCRETE AT ALL Poured MASONRY CELLS SHALL BE 3000 PSI AT 28 DAYS. MIN. 6 BAGS MIX... ALL CONC. VIBRATED FOR NO VOIDS...
- CONCRETE MASONRY UNITS SHALL BE TWO CELL BLOCKS MADE OF PORTLAND CEMENT, WATER AND APPROVED AGGREGATES, AND SHALL CONFORM TO THE STANDARD SPECIFICATIONS FOR HOLLOW LOAD BEARING MASONRY UNITS ASTM DESIGNATION C90-70 WITH A MINIMUM COMPRESSIVE STRENGTH OF 1000 PSI. NO DAMAGED OR IRREGULAR MATERIAL SHALL BE USED.
- MORTAR SHALL BE TYPE "M" AND SHALL CONFORM TO ASTM DESIGNATION C90-70, WITH HEAVY DUTY HORIZONTAL JOINT REINFORCING AT 1'-4" CENTERS VERTICALLY. NO REINFORCEMENT THROUGH EXPANSION JOINTS.
- ALL METAL ANCHORING DEVICES SHALL BE "SIMPSON" OR EQUAL AND BE APPROVED BY THE BUILDING DEPARTMENT. CONTRACTOR SHALL SPECIFY MFR. & ITEM NUMBER AND SUBMIT TO BUILDING DEPARTMENT FOR APPROVAL PRIOR TO INSTALLATION.

**GENERAL NOTES :**

- ALL TOILET ROOM DIMENSIONS ARE MINIMUM INTERIOR CLEAR.
- DRAWINGS ARE BASIC EXISTING REQUIREMENTS. CONTRACTOR SHALL INSPECT AND VERIFY THE SCOPE OF WORK. ANY ADDITIONAL WORK NOT SPECIFICALLY NOTED ON THE DRAWING BUT YET APPARENT TO THE FIELD INSPECTION SHALL BE CONSIDERED AS PART OF THIS CONTRACT.
- CONTRACTOR SHALL CHECK AND VERIFY ALL DIMENSIONS AND NOTIFY ARCHITECT IMMEDIATELY OF ANY DISCREPANCIES.
- CONTRACTOR SHALL COORDINATE AND VERIFY SIZES AND LOCATIONS OF ALL UTILITY CONNECTIONS WITH RESPECTIVE AGENCIES AND RESTORE ALL DISTURBED AREAS TO ORIGINAL CONDITION.
- ALL WOOD IN CONTACT WITH CONCRETE OR CONCRETE MASONRY SHALL BE PRESSURE TREATED OR PROTECTED WITH DECAY RESISTANT MATERIAL.
- CONTRACTOR SHALL SUPPLY AND INSTALL ALL CAULKING AND SEALING TO PROVIDE A WATERTIGHT / WATERPROOF SEAL. SEALANT COLOR SHALL BE A COLOR APPROPRIATE FOR THE AREA IN WHICH IT IS BEING USED. APPLY SEALANT IN ACCORDANCE WITH MANUFACTURER'S RECOMMENDATIONS.
- FINISH HARDWARE STYLE AND FINISH SHALL BE LEVER TYPE, STYLE TO BE SELECTED BY OWNER.
- ALL HANDICAP TOILET ROOM DOORS SHALL BE EQUIPPED WITH PRIVACY LOCK SET, CLOSER, AND SHALL HAVE LEVER TYPE DOOR HANDLES. NO ROUND KNOBS SHALL BE PERMITTED.
- PAINT ALL DOORS, JAMBS AND TRIM WITH ONE COAT OF OIL BASE PRIMER AND TWO COATS OF SATIN OIL ENAMEL. (CONTRACTORS OPTION TO USE LATEX)
- ALL COLORS SHALL BE SELECTED BY OWNER.
- OFFICE INTERIOR GYPSUM WALLBOARD UNLESS NOTED SHALL RECEIVE TWO COATS LATEX OVER LIGHT ORANGE PEEL TEXTURE. ALL INTERIOR GYPSUM WALLBOARD AT TOILET ROOMS ABOVE TILE SHALL RECEIVE TWO COATS SEMI-GLOSS ENAMEL OVER LIGHT ORANGE PEEL TEXTURE.
- PROVIDE WALL MOUNTED, DRY CHEMICAL TYPE, ABC RATED 10 LB. CAPACITY FIRE EXTINGUISHER WITH PRESSURE GAUGE. PLACE IN ACCORDANCE WITH FIRE MARSHALL'S INSTRUCTIONS.



**FOUNDATION PLAN**  
SCALE: 1/4" = 1'-0"

**FLOOR PLAN**  
SCALE: 1/4" = 1'-0"

**ROOF FRAMING**  
SCALE: 1/4" = 1'-0"

**PLUMBING NOTES :**

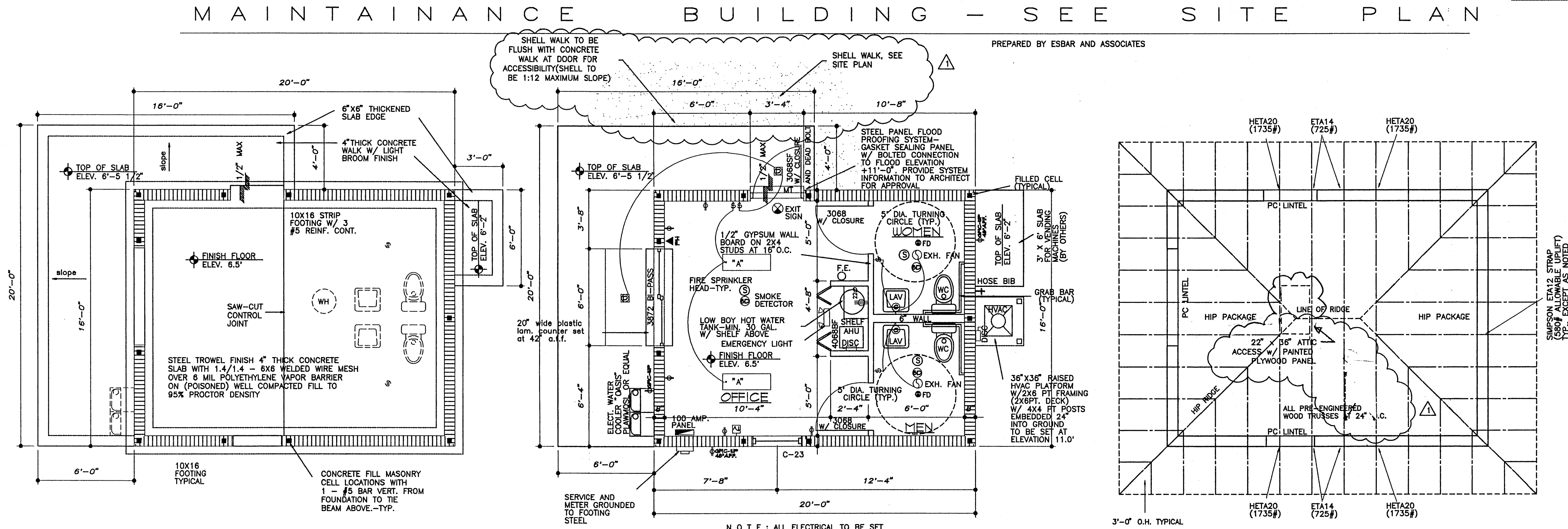
- PLUMBING CONTRACTOR SHALL COORDINATE LOCATION OF ALL UNDERGROUND LINES WITH OTHER APPLICABLE TRADES.
- BRANCH WATER LINES TO ALL FIXTURE GROUPS WITH 1/2" FINAL CONNECTION AT EACH FIXTURE.
- ALL MATERIALS REQUIRED TO PROVIDE COMPLETE WATER SEWER SYSTEM IN ACCORDANCE WITH ALL APPLICABLE CODES AND ORDINANCES, SHALL BE SUPPLIED AND INSTALLED.
- ALL TOILET ROOMS SHALL BE HANDICAP EQUIPPED AND SHALL INCLUDE:  
LAVATORY: WHITE CHINA, 19"x16" WALL HUNG AT 34" A.F.F. WITH LEVER OPERATED MOEN TRIM OR EQUAL.  
WATER CLOSET: ELONGATED WHITE CHINA, OPEN FRONT SEAT AT 19" A.F.F.  
GRAB BAR: 1-1/2" DIAMETER STAINLESS STEEL AT 33" A.F.F. 24" LONG MIN. CENTERED ON LEADING EDGE OF WATER CLOSET.  
PAPER HOLDER: FLUSH MOUNTED, AT CENTERLINE AT 19" A.F.F.  
MIRROR: 18"x30" WALL MOUNTED AT 40" A.F.F. MINIMUM (BOTTOM).  
PAPER TOWEL DISPENSER: LOCATED ADJACENT TO ACCESSIBLE LAVATORY.
- ALL P.V.C. LINES SHALL BE SCHEDULED 40.

**LIGHTING FIXTURE SCHEDULE**

- 'A' 2'x4' SURFACE MOUNTED TROFFER FIXTURE. 4- 40 WATT TUBE WITH ACRYLIC PRISMATIC LENS.
- 'B' WALL MOUNTED, WALL PACK FIXTURE WITH 250 WATT HP SODIUM BULB. WEATHERPROOF
- 'C' WALL MOUNTED LIGHT LAMPED WITH 100 WATT INCANDESCENT.
- 'D' RECESSED CAN LIGHTING, VAPOR PROOF, FRESNEL LENS, LAMPED W/100WATT BULB. WEATHERPROOF

**ELECTRICAL NOTES :**

- ALL WIRING AND GROUNDING SHALL BE COPPER.
- ALL ELECTRICAL SYSTEMS SHALL BE INSTALLED COMPLETE WITH ALL COMPONENTS.
- ALL SERVICE EQUIPMENT SHALL BE APPROVED BY POWER COMPANY.
- CONTRACTOR SHALL OBTAIN ALL INSPECTIONS REQUIRED.
- ALL EQUIPMENT SHALL BE NEW UNLESS OTHERWISE NOTED.
- PROVIDED APPROVED BOXES, PLATES, PULL WIRES AND ESCUTCHEONS FOR TELEPHONE OUTLETS. FIELD VERIFY LOCATIONS WITH OWNER.
- ALL WORK AND MATERIALS SHALL BE IN ACCORDANCE WITH LATEST EDITION OF NATIONAL ELECTRIC CODE AS AMENDED BY LOCAL ORDINANCES AND AUTHORITIES HAVING JURISDICTION.
- ALL EXIT LIGHTS AND EMERGENCY LIGHTING UNITS SHALL BE EQUIPPED WITH EMERGENCY POWER IN ACCORDANCE WITH N.F.P.A. 70 (ARTICLE 700, SECTION 12-F).
- ALL CONDUIT SHALL BE RUN CONCEALED EXCEPT WHERE SUCH IS NOT POSSIBLE WITHIN UNFINISHED SPACES.
- SMOKE DETECTORS SHALL BE PHOTO-ELECTRIC TYPE.
- PROVIDE PULL WIRE IN ALL EMPTY CONDUITS.
- ALL EQUIPMENT SHALL BE SIZED FOR PROPER AMPERAGE AND INTERRUPTING RATING.



**FOUNDATION PLAN**  
SCALE: 1/4" = 1'-0"

**FLOOR PLAN**  
SCALE: 1/4" = 1'-0"

**ROOF FRAMING**  
SCALE: 1/4" = 1'-0"

**OFFICE BUILDING - SEE SITE PLAN**

FINISH NOTES

	FLOOR	BASE	WALLS
OFFICE	CARPET	VINYL	PAINTED GYPSUM
TOILET ROOMS	12X12 CERAMIC TILE	CERAMIC TILE	4" HIGH CERAMIC TILE WAINSCOT - EPOXY PAINTED GYPSUM ABOVE
MAINT. BLDG.	PAINTED SLAB	NONE	PAINTED MASONRY

ALLOWANCES:

CARPET :	\$12.00 S.F.
FLOOR & WALL :	\$1.50 S.F. TILE

INSTALLATION OF ALL ALLOWANCE ITEMS SHALL BE INCLUDED IN BASE BID AND NOT PART OF ALLOWANCES.

**SQUARE FOOTAGE**  
OFFICE: 320 S.F.  
MAINTENANCE: 144 S.F.

**PATRICK M. PILLOT ARCHITECT, INC.**  
1267 SECOND STREET SARASOTA, FLORIDA 34236  
(941) 955-7375 FAX (941) 953-2281  
FLORIDA #AC002195 - CONNECTICUT #9135 - NORTH CAROLINA #6701  
PENNSYLVANIA RA-015149-B NEW JERSEY AT14013

**LONGBOAT KEY TENNIS CENTER**  
CONSTRUCTION PLANS  
ARCHITECTURAL PLAN

DESCRIPTION:  
DATE: 5-5-98  
BY: [Signature]  
SCALE: [Blank]  
REVISIONS:  
24 AUGUST 98

**ESBER & ASSOCIATES**  
Engineers • Surveyors  
5914 Palmer Blvd. Sarasota, FL 34232  
(941) 979-8831 • Fax (941) 979-0566

APPROVED: [Signature]  
PROJECT NO: [Blank]  
SHEET NO: A-1  
NOT ISSUED FOR CONSTRUCTION

AS-BUILT



