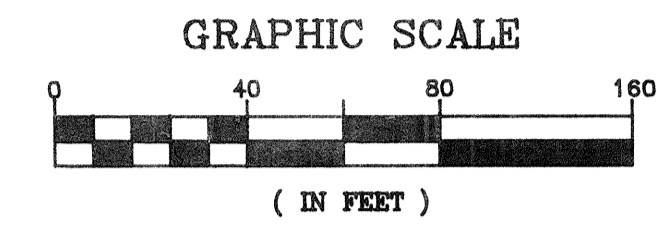
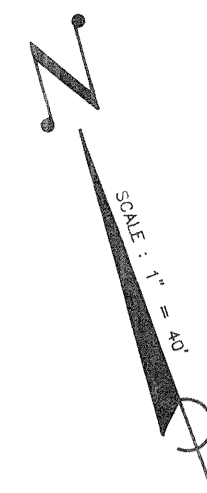
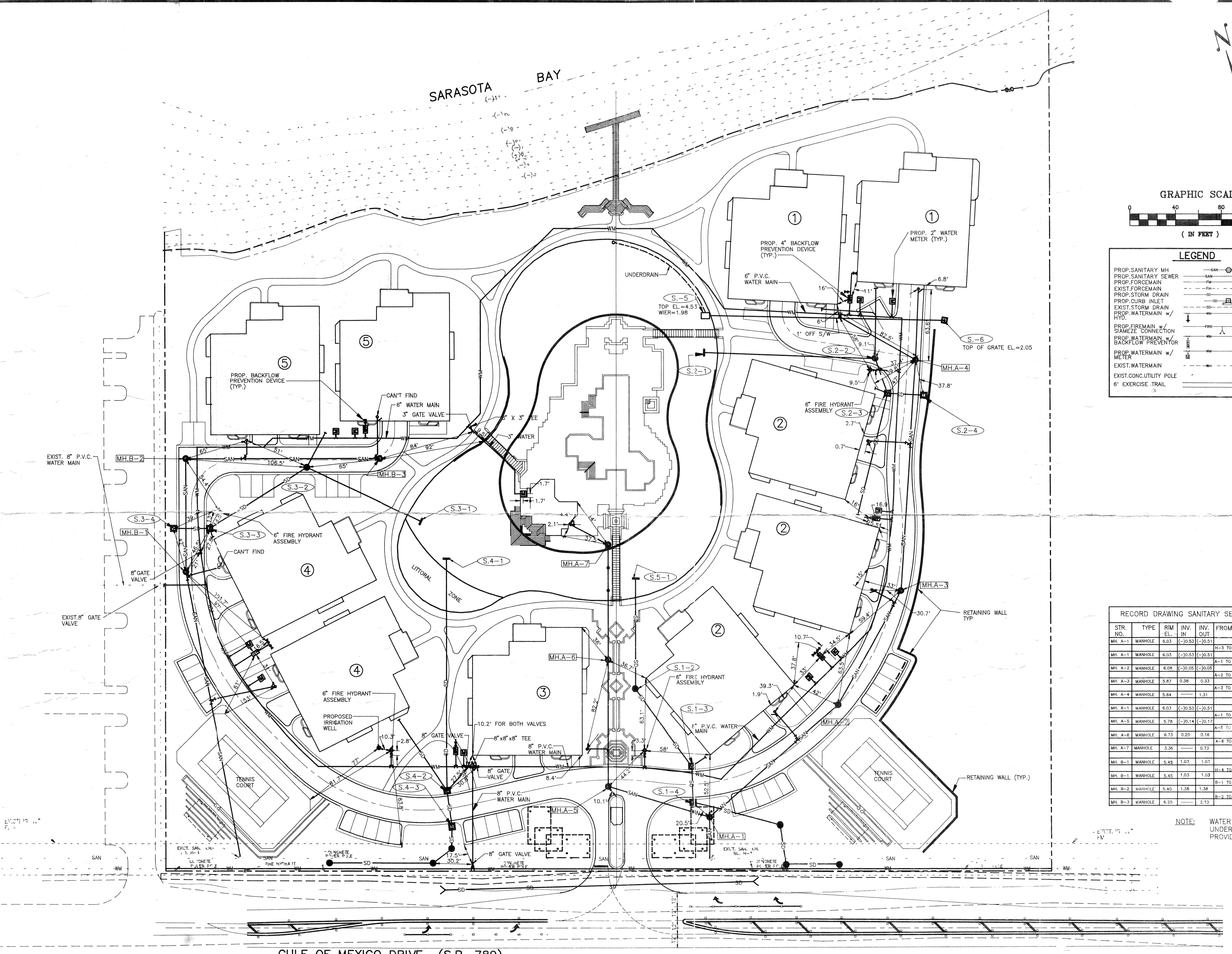


SARASOTA BAY



LEGEND

- PROP. SANITARY MH
- PROP. SANITARY SEWER
- PROP. FORCEMAIN
- EXIST. FORCEMAIN
- PROP. STORM DRAIN
- PROP. CURB INLET
- EXIST. STORM DRAIN
- PROP. WATERMAIN w/ HYD.
- PROP. FIREMAIN w/ SIAMEZE CONNECTION
- PROP. WATERMAIN w/ BACKFLOW PREVENTOR
- PROP. WATERMAIN w/ METER
- EXIST. WATERMAIN
- EXIST. CONC. UTILITY POLE
- 6" EXERCISE TRAIL



RECORD DRAWING SANITARY SEWER PIPE SCHEDULE

STR. NO.	TYPE	RIM EL. IN.	INV. OUT.	FROM-TO	LENGTH	SIZE & TYPE	GRADE
MH. A-1	MANHOLE	6.03	(-10.53)	(-10.51)	H-3 TO A-1	8" P.V.C.	
MH. A-1	MANHOLE	6.03	(-10.53)	(-10.51)	A-1 TO A-2	147 L.F. 8" P.V.C.	0.39%
MH. A-2	MANHOLE	6.08	(-10.05)	(-10.05)	A-2 TO A-3	114.5 L.F. 8" P.V.C.	0.33%
MH. A-3	MANHOLE	5.87	0.38	0.33	A-3 TO A-4	201.5 L.F. 8" P.V.C.	0.48%
MH. A-4	MANHOLE	5.64		1.31	A-4 TO A-5	93.5 L.F. 8" P.V.C.	0.39%
MH. A-5	MANHOLE	5.78	(-10.14)	(-10.17)	A-5 TO A-6	111 L.F. 8" P.V.C.	0.27%
MH. A-6	MANHOLE	6.73	0.20	0.16	A-6 TO A-7	100.8 L.F. 8" D.I.P.	0.53%
MH. A-7	MANHOLE	3.36		0.73			
MH. B-1	MANHOLE	5.49	1.03	1.03	H-4 TO B-1	258 L.F. 8" P.V.C.	0.67%
MH. B-1	MANHOLE	5.45	1.03	1.03	B-1 TO B-2	100 L.F. 8" P.V.C.	0.30%
MH. B-2	MANHOLE	5.40	1.38	1.38	B-2 TO B-3	171 L.F. 8" P.V.C.	0.44%
MH. B-3	MANHOLE	6.25		2.13			

NOTE: WATER LINE AND FITTINGS UNDERGROUND LOCATIONS PROVIDED BY CONTRACTOR.

GULF OF MEXICO DRIVE (S.R. 789)

REPLACE 780L LF 8" AC WATERMAIN WITH 12" P.V.C. WATERMAIN - 780% AS-BUILT 12" P.V.C. WATERMAIN

GARY K. LANDRY
NOV 18 1992
P.E. #37849

NOV 1
P.E. #37849

TOWN OF LONGBOAT KEY, FLORIDA
TANGERINE BAY CLUB - TANGERINE BAY COMPANY - UTILITIES RECORD DRAWING

DESIGNED BY: PROJECT ENGINEER
D. JONES

DATE: 4-20-92

CHECKED BY: PROJECT NO. LKSD-0052RD

SCALE: 1" = 40'

DRAWN BY: SWS

BY: SWS

REVISION

DATE: 7-31-92

LTR.

ADDED RECORD DWG. INFO.

78 SARASOTA CENTER BLVD. SARASOTA, FLORIDA 34240 (813) 371-6362

ENGINEER & LOCATION: BISHOP & ASSOCIATES

SHEET NUMBER: 1 OF 1

FILE NO.