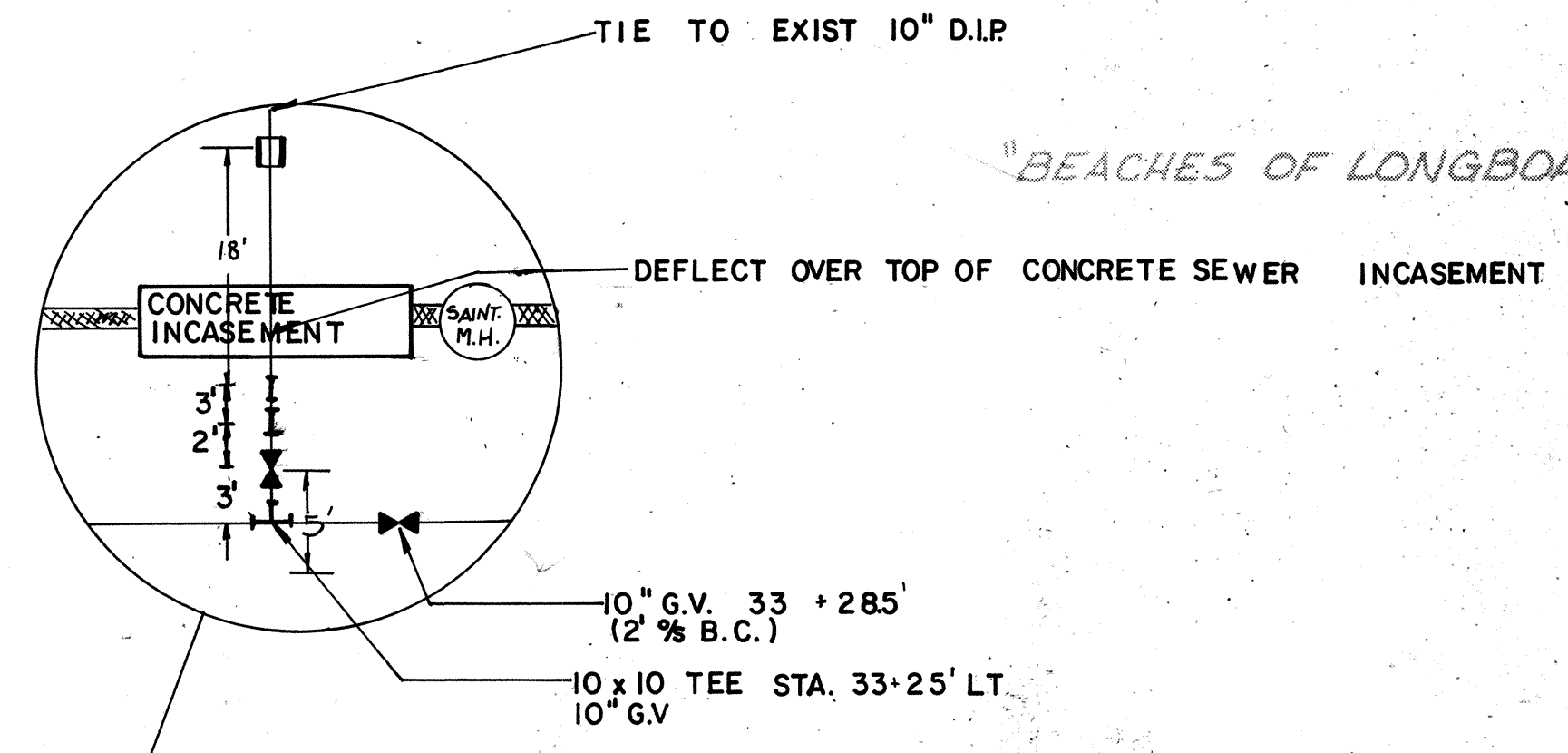
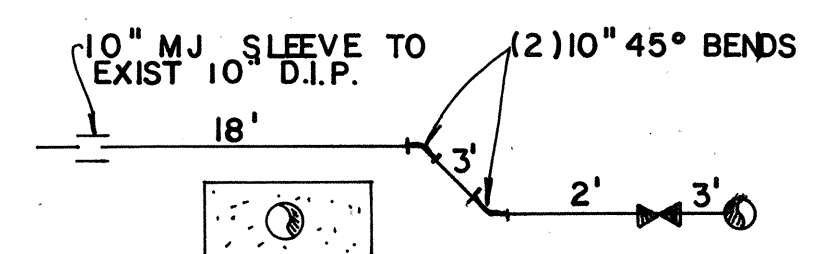


ITEM	STATION	DISTANCE FROM BACK OF CURB	TIE TO NEAREST LIGHT POLE	TIE TO NEAREST FIRE HYDRANT
10" G.V.	28+91 LT.	3.5'	S.W. CORNER 95'	
6" G.V. TO F.H.	31+93 LT.	2.17'	N.W. CORNER 96.5'	1.42'
10" TER	33+25 LT.	2'		
10" G.V.	33+25 LT.	4.58'	N.W. CORNER 60.25'	132'
10" G.V.	33+26.5'	2'	N.W. CORNER 57'	135.5'

INVESTIGATE BEFORE YOU EXCAVATE
"CALL CANDY"
 1-800-282-8881
 TOLL-FREE
 FL STATUTE 353.801 (1979) REQUIRES MIN. OF 2 DAYS AND MAX. OF 5 DAYS NOTICE BEFORE YOU EXCAVATE.

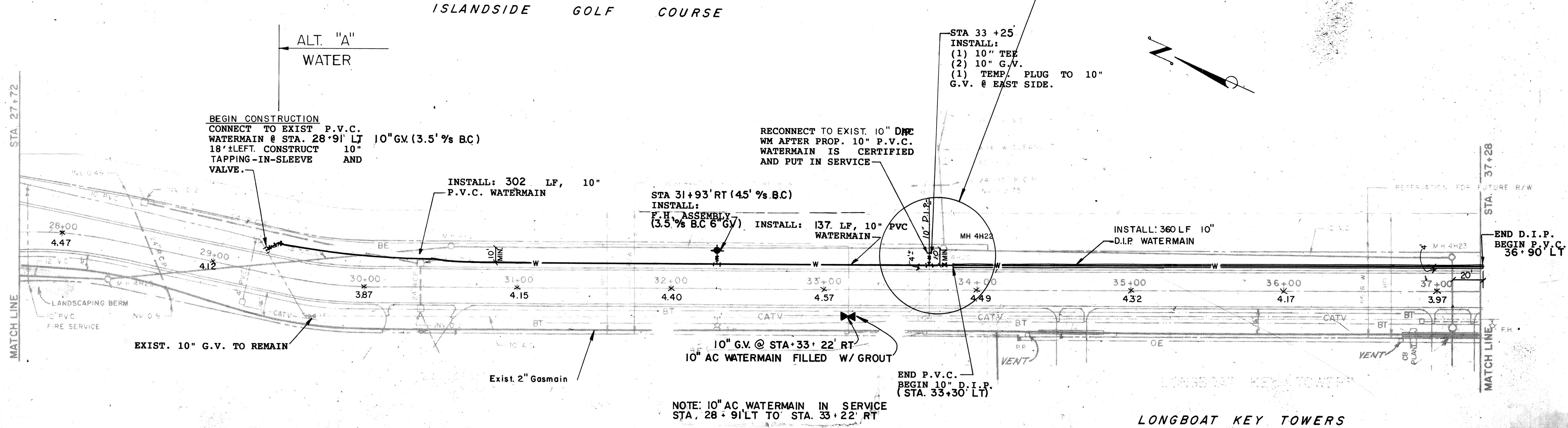
ALSO NOTIFY:
 F.P. & L. 953-7265
 TOWN OF LONGBOAT KEY 383-3721
 IRRIGATION (ARVIDA) 383-5667
 DEXTER ARCADY 365-1595
 SOUTHERN GAS 365-1595



LEGEND

- RIGHT-OF-WAY LINE
- WATERMAIN EXIST
- SANITARY SEWER
- STORM DRAIN
- FORCEMAIN
- BURIED TELEPHONE
- BURIED ELECTRIC
- BURIED CABLE TV
- GASMAIN
- W --- PROP WATERMAIN / F.H.
- F.M --- PROP FORCEMAIN

- NOTES:**
- CONTRACTOR TO VERIFY THE LOCATION OF ALL EXIST. WATER SERVICES PRIOR TO CONST. & RECONNECT TO PROP. 10" PVC WATERMAIN, AFTER THE PROP. MAIN IS CERTIFIED AND PUT IN SERVICE.
 - ALL WATERMAIN LENGTHS SHOWN ARE APPROXIMATE.
 - AFTER ABANDONING EXIST. 10" A.C. WATERMAIN REMOVE AND SALVAGE EXIST. F.H. ASSEMBLIES VALVES, ETC. FROM EXIST. 10" A.C. WATERMAIN AND SEAL THE OPEN END.
 - ALL CONNECTION TO EXIST. WATERMAIN TO BE MADE AFTER THE PROP. WATERMAIN IS CERTIFIED AND PUT INTO SERVICE.
 - PERMISSION REQUIRED FROM ARVIDA CORP. FOR J & B INSTALLATION AND CURB AND PAVEMENT REMOVAL AND REPLACEMENT.
 - 10" PVC PIPE SHALL BE DEFLECTED WITHIN ALLOWABLE LIMITS TO AVOID ADDITIONAL FITTINGS. OTHER CHANGES IN DIRECTION SHALL BE ACCOMPLISHED BY APPROPRIATE FITTINGS.
 - CONTRACTOR IS TO KEEP WATER SERVICE TO ALL RESIDENTS DURING CONSTRUCTION.
 - ALL ELEVATIONS BASED ON NGVD 1929 DATUM.



NOTE: 10" AC WATERMAIN IN SERVICE STA. 28+91 LT TO STA. 33+22 RT

TOWN OF LONGBOAT KEY, FLORIDA
 LONGBOAT CLUB ROAD - UTILITY REPLACEMENT
 PROJECT NO. PP
 CHECKED BY RWC
 DESIGNED BY PROJECT ENGINEER
 DATE: 12-01-89
 SCALE: 1"=40'
 BY: []
 REVISION: []
 LTR. DATE: []
 78 SARASOTA CENTER BLVD SARASOTA, FL 34240
 BISHOP & ASSOCIATES
 ENGINEER & LOCATION
 T.L.K. FILE NO. []
 SHEET NUMBER PRSA-0001
 REVISION AB