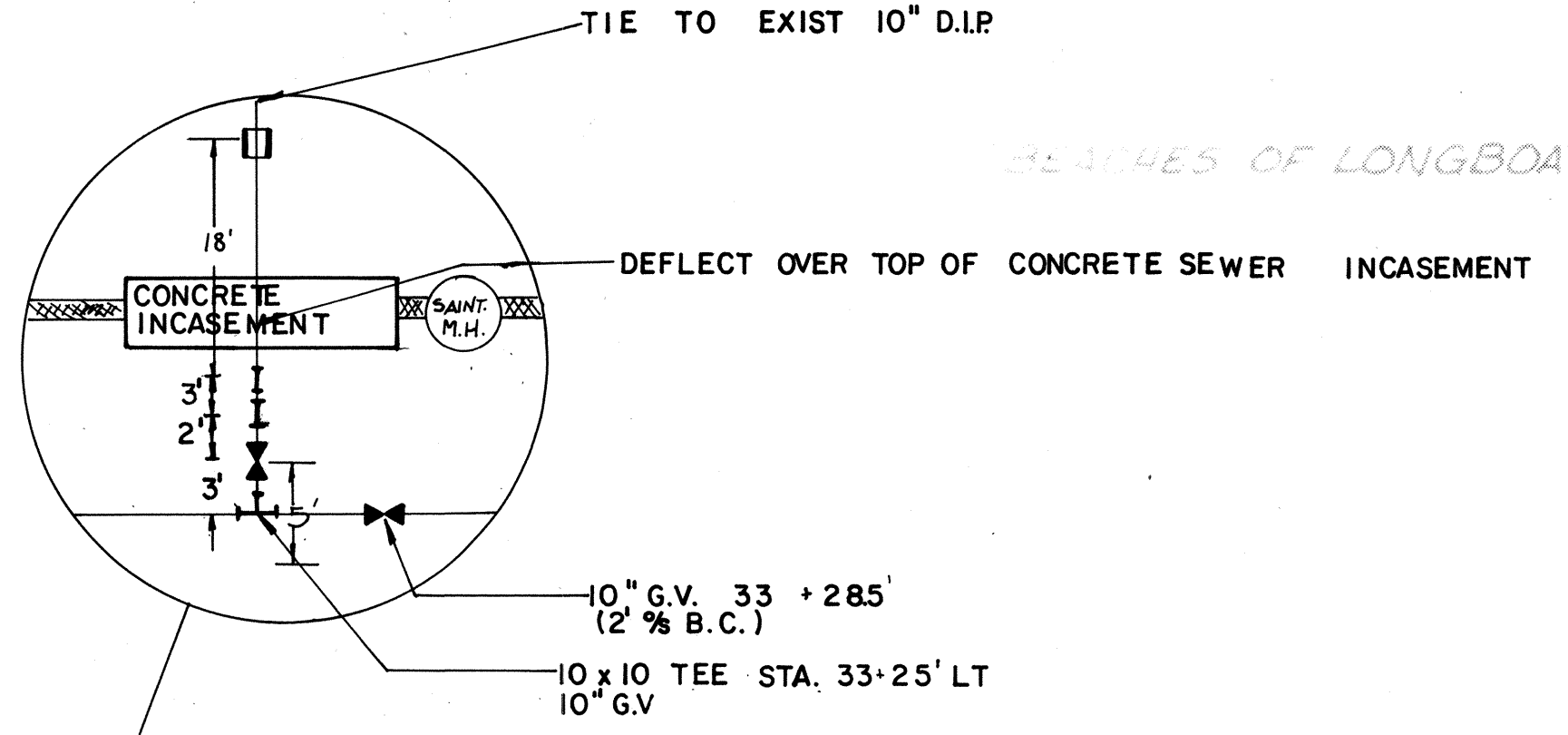
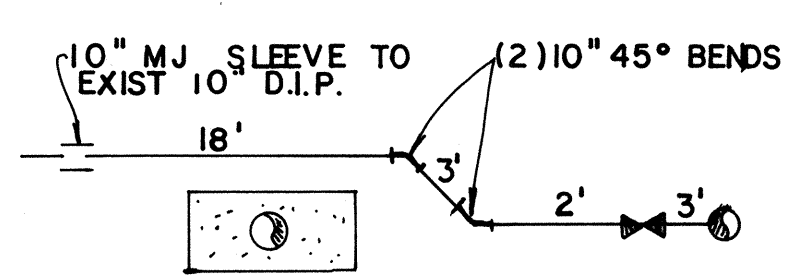
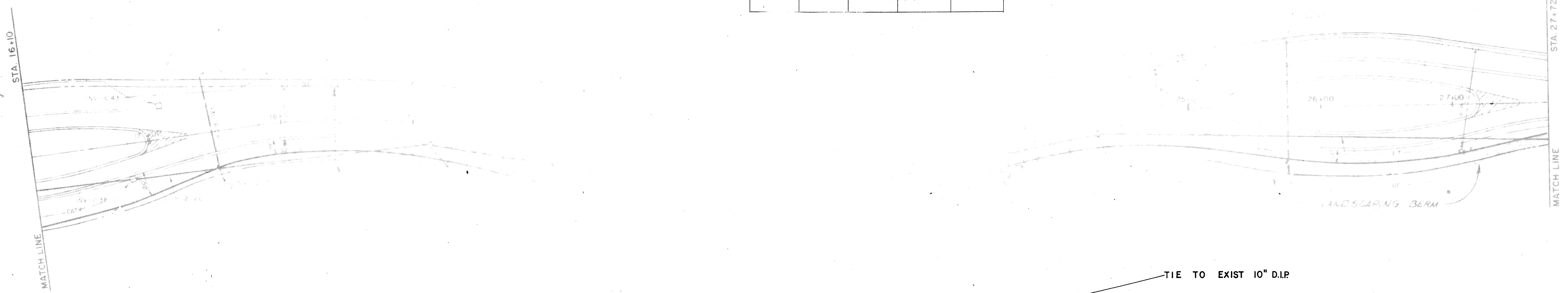


INVESTIGATE BEFORE YOU EXCAVATE
"CALL CANDY"
 1-800-282-8881
 TOLL FREE
FL STATUTE 503.061 (1978) REQUIRES MIN. OF 2 DAYS AND MAX. OF 2 DAYS NOTICE BEFORE YOU EXCAVATE.

ALSO NOTIFY:
 F.P. & L. 953-7265
 TOWN OF LONGBOAT KEY 383-3721
 IRRIGATION (ARVIDA)
 DEXTER GASCOI 383-5667
 SOUTHERN GAS 365-1595

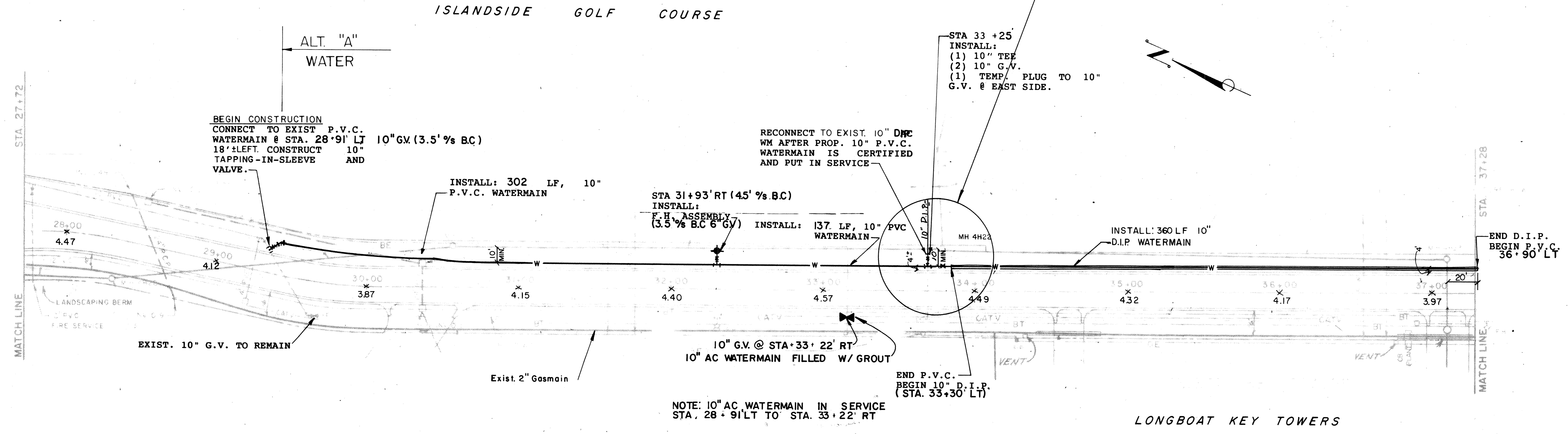
ITEM	STATION	DISTANCE FROM BACK OF CURB	TIE TO NEAREST LIGHT POLE	TIE TO NEAREST FIRE HYDRANT
10" G.V.	28+91 LT.	3.5'	S.W. CORNER 95'	
6" G.V. TO F.H.	31+93 LT.	2.17'	N.W. CORNER 96.5'	1.42'
10" TEE	33+25 LT.	2'		
10" G.V.	33+25 LT.	4.58'	N.W. CORNER 60.25'	132'
10" G.V.	33+28.5'	2'	N.W. CORNER 57'	135.5'



LEGEND

---	RIGHT OF WAY LINE
---	WATERMAIN EXIST.
---	SANITARY SEWER
---	STORM DRAIN
---	FORCEMAIN
---	BURIED TELEPHONE
---	BURIED ELECTRIC
---	BURIED CABLE TV
---	GASMAIN
---	PROP. WATERMAIN
---	PROP. FORCEMAIN

- NOTES:**
- CONTRACTOR TO VERIFY THE LOCATION OF ALL EXIST. WATER SERVICES PRIOR TO CONST. & RECONNECT TO PROP. 10" PVC WATERMAIN, AFTER THE PROP. MAIN IS CERTIFIED AND PUT IN SERVICE.
 - ALL WATERMAIN LENGTHS SHOWN ARE APPROXIMATE.
 - AFTER ABANDONING EXIST. 10" A.C. WATERMAIN REMOVE AND SALVAGE EXIST. F.H. ASSEMBLIES VALVES, ETC. FROM EXIST. 10" A.C. WATERMAIN AND SEAL THE OPEN END.
 - ALL CONNECTION TO EXIST. WATERMAIN TO BE MADE AFTER THE PROP. WATERMAIN IS CERTIFIED AND PUT INTO SERVICE.
 - PERMISSION REQUIRED FROM ARVIDA CORP. FOR J & B INSTALLATION AND CURB AND PAVEMENT REMOVAL AND REPLACEMENT.
 - 10" PVC PIPE SHALL BE DEFLECTED WITHIN ALLOWABLE LIMITS TO AVOID ADDITIONAL FITTINGS. OTHER CHANGES IN DIRECTION SHALL BE ACCOMPLISHED BY APPROPRIATE FITTINGS.
 - CONTRACTOR IS TO KEEP WATER SERVICE TO ALL RESIDENTS DURING CONSTRUCTION.
 - ALL ELEVATIONS BASED ON NGVD 1929 DATUM.



PROJECT ENGINEER
 DESIGNED BY
 DATE: 12-01-89
 SCALE: 1" = 40'
 DRAWN BY: RWC
 CHECKED BY: PP
 PROJECT NO.:
 TOWN OF LONGBOAT KEY, FLORIDA
 LONGBOAT CLUB ROAD - UTILITY REPLACEMENT
 ENGINEER & LOCATION
 BISHOP & ASSOCIATES
 78 SARASOTA CENTER BLVD SARASOTA, FL. 34240
 SHEET NUMBER
 PRSA-0001
 REVISION