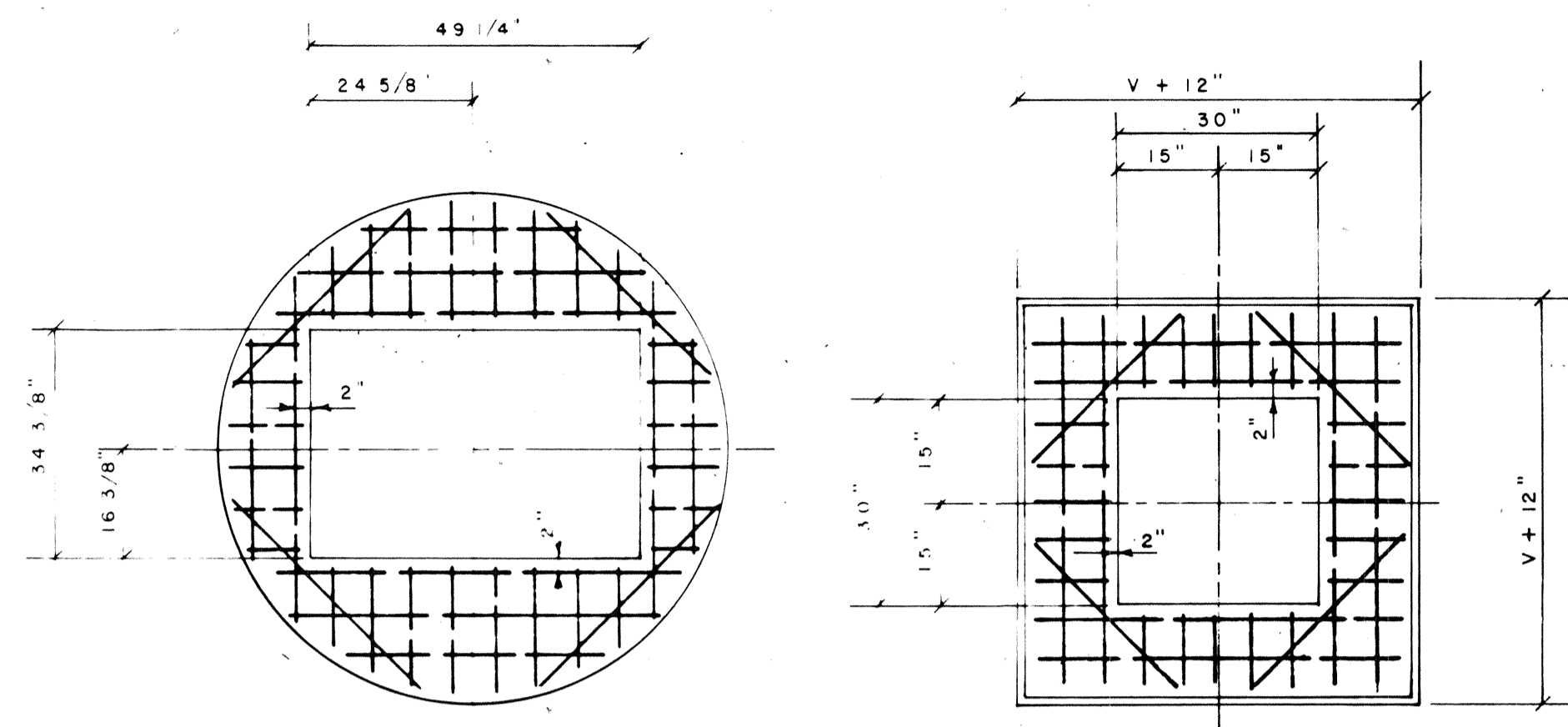
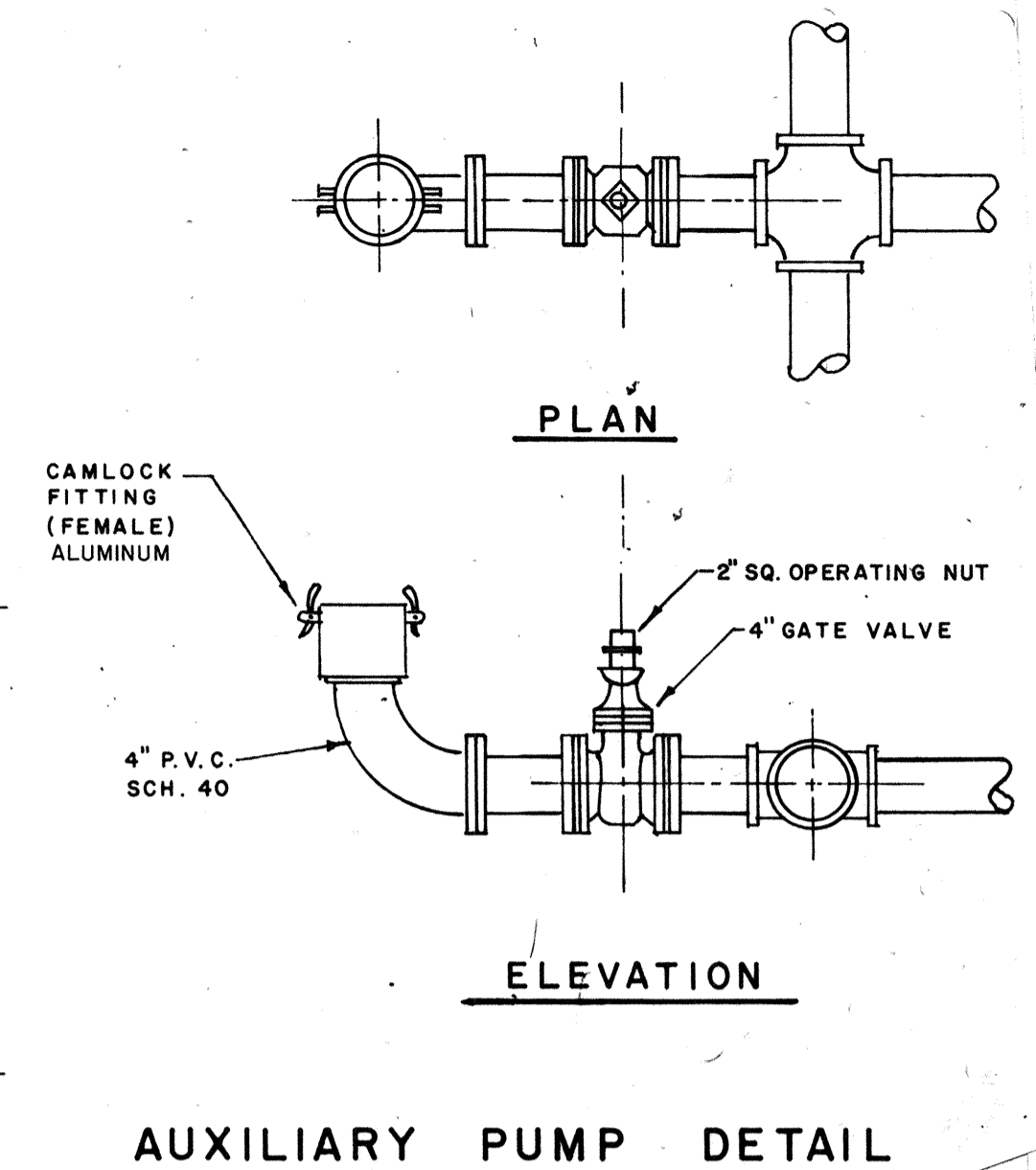


**AUXILIARY PLAN
LEFT OR RIGHT
DISCHARGE**

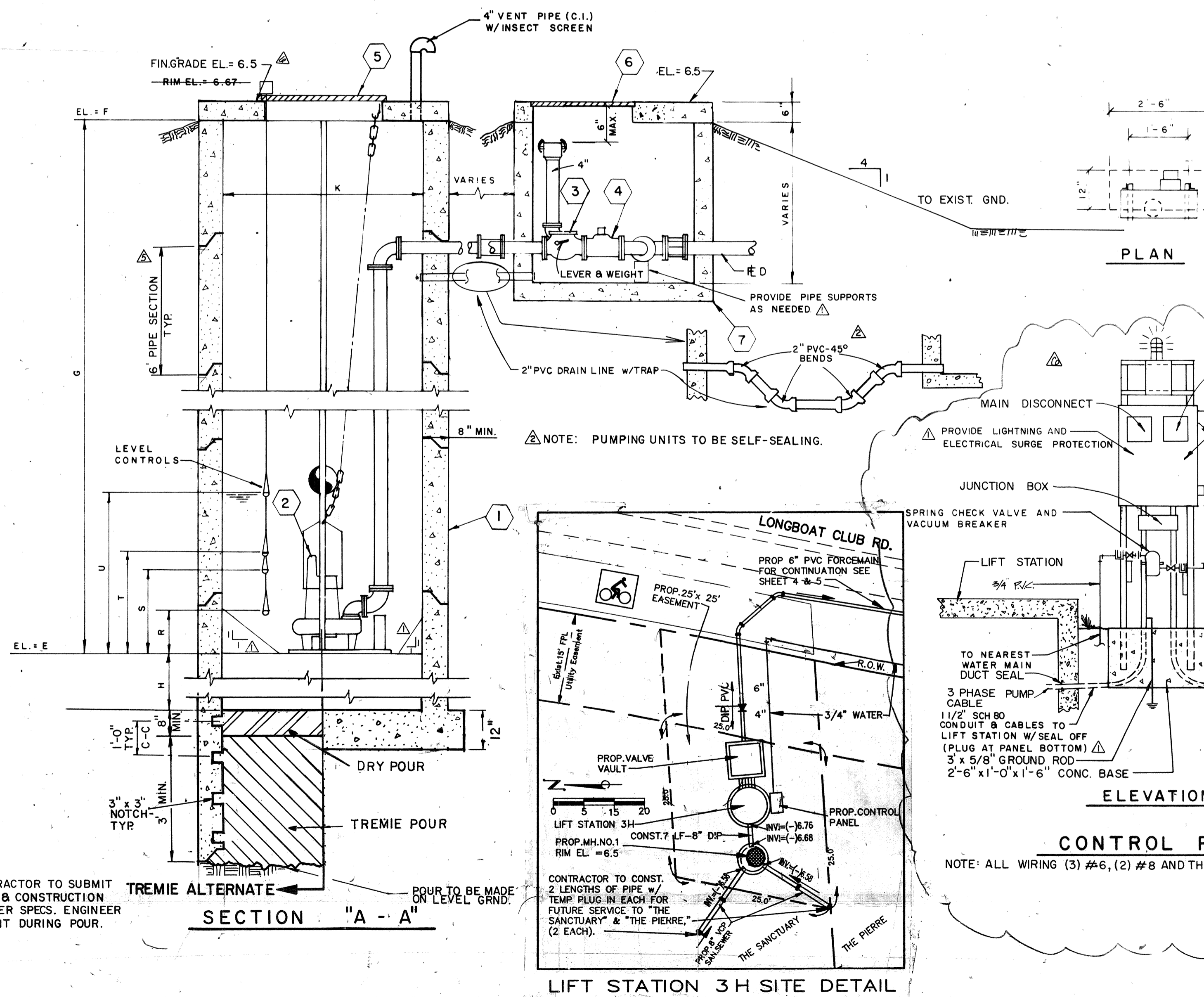


STEEL PLACEMENT IN COVERS



AUXILIARY PUMP DETAIL

NOTE: LANDSCAPING TO BE COMPLETED BY OTHERS

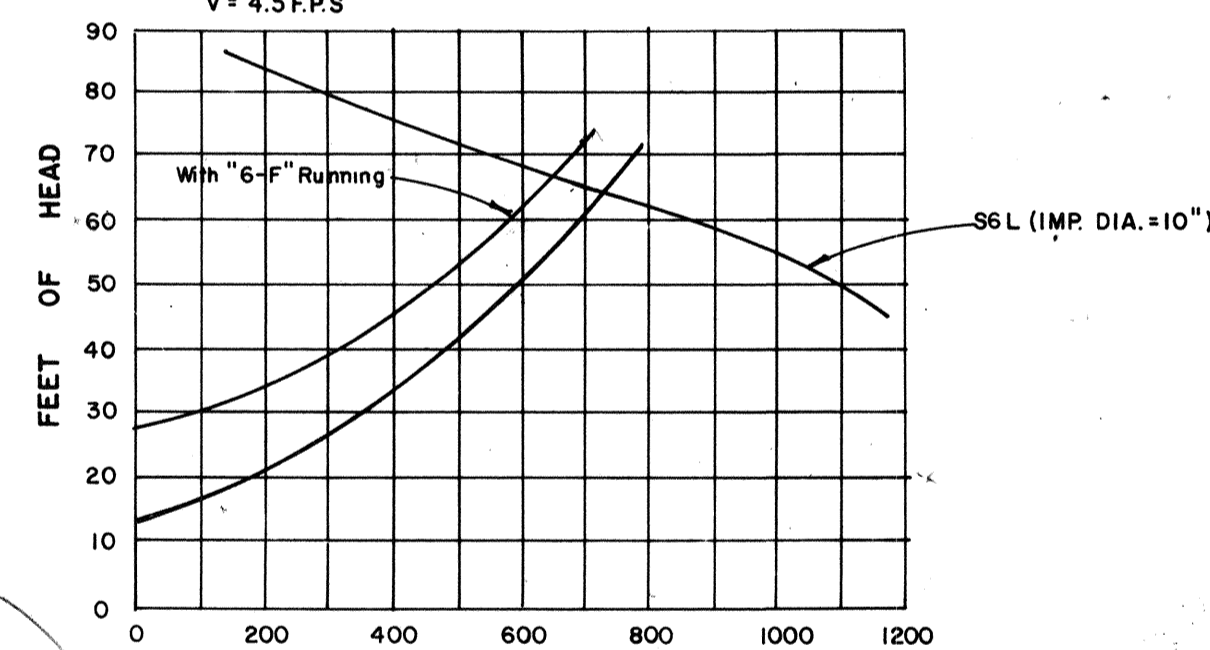


NOTE: TREMIE: CONTRACTOR TO SUBMIT QUALIFICATION & CONSTRUCTION TECHNIQUES PER SPECS. ENGINEER TO BE PRESENT DURING POUR.

NOTES:

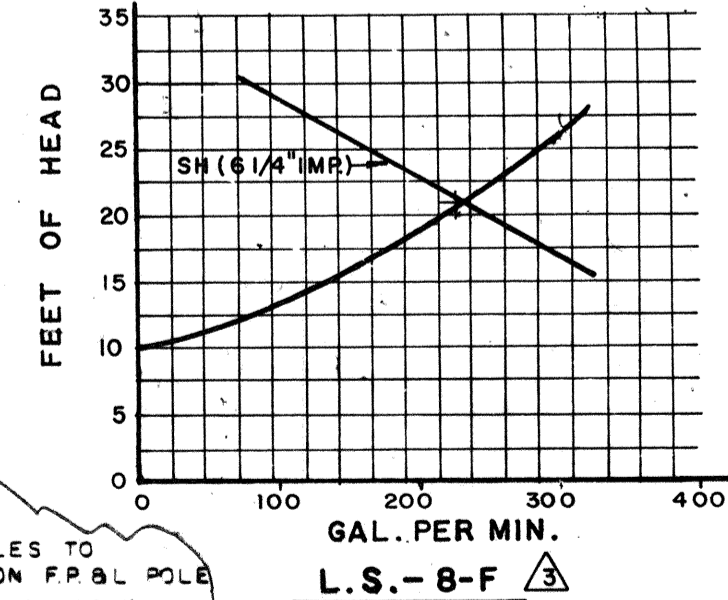
- ELECTRICAL SERVICE TO METER PAN BY OTHERS.
- SERVICE FROM METER PAN TO LIFT STATION (INCLUDING PANEL) BY CONTRACTOR.
- METER PAN SHALL BE LOCATED ON REAR OF CONTROL PANEL.
- ALL BARREL JOINTS SHALL BE MADE WATERTIGHT WITH AN APPROVED NEOPRENE GASKET AND GROUT.
- ALL FLOAT CONNECTIONS SHALL BE EXTERIOR.

70' OF 6" C.I. C-100
4400' OF 8" D.I. C-140
V = 4.5 FPS

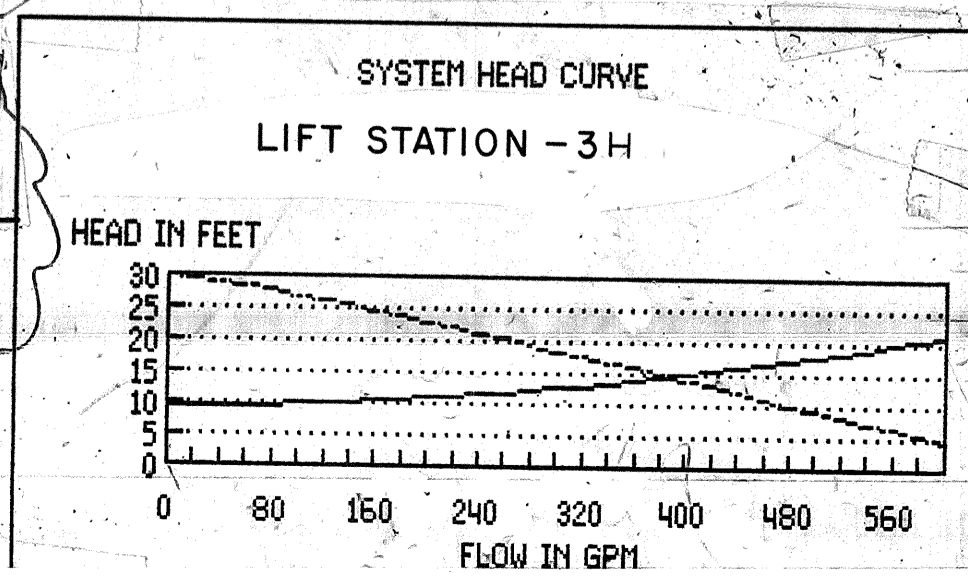


**SCHEDULE OF LIFT STATION DATA
L.S.-7-F**

67' OF 4" C.I. C-100
205' OF 6" D.I. C-140
V = 2.8 FPS



**SCHEDULE OF LIFT STATION DATA
L.S.-8-F**



LIFT STATION No.	LBKCLUB		BAY ISLES UNIT No. 6	
	3H	7-F	8-F	8-F
A. TYPE	HYDR-O-MATIC	HYDR-O-MATIC	HYDR-O-MATIC	HYDR-O-MATIC
B. INF. PIPE SIZE	8"	12"	10"	10"
C. FL. LINE IN	-6.76	-8.59	-5.0	-5.0
D. FL. LINE OUT FM	1.0	2.0	1.0	1.0
E. LS BOTT. ELEV.	-12.29	-14.00	-10.00	-10.00
F. GRADE ELEVATION	6.00	6.00	6.00	6.00
G. DEPTH TO BOTT.	18.29'	20.0'	16.0	16.0
H. DEPTH OF BALLAST	4"	2.0'	2.0	2.0
J. CY BALLAST	0.35	5.8	3.8	3.8
K. BARREL DIA. FT.	6'	10.0'	8.0	8.0
L. PUMP MODEL	S4N	S6L	SH	SH
M. H.P.	3	20	2	2
N. R.P.M.	1750RPM	1750	1750 RPM	1750 RPM
P. VOLT/PHASE	240/3	460/3	240/3	460/3
Q. FM SIZE	6"	8"	6"	6"
R. OFF - BOTH PUMPS	18" (EL.-10.79)	1	12"	12"
S. 1 PUMP ON ELEV.	-8.09	3'-6"	4'-0"	4'-0"
T. 2 PUMPS ON ELEV.	-7.59	4'-0"	4'-6"	4'-6"
U. H.W. ALARM ELEV.	-7.09	4'-6"	5'-0"	5'-0"
V. VALVE VAULT	6'-0"	6'-0"	6'-0"	6'-0"
W. DESIGN FLOW	386.7 GPM	688 G.P.M.	240 G.P.M.	240 G.P.M.

NOTE: CHECK VALVE ECCENTRIC PLUG VALVE

MATERIAL SCHEDULE (See Note Below)

- | ITEM | DESCRIPTION |
|------|--|
| 1. | PRECAST CONCRETE WET WELL
NOTE: SHOP DRAWINGS REQUIRED. |
| 2. | PUMPS, HYDR-O-MATIC, SEE SCHEDULE. |
| 3. | CHECK VALVE 6" UNLESS OTHERWISE NOTED (4" FOR LS 3A) |
| 4. | ECCENTRIC PLUG VALVE 6" UNLESS OTHERWISE NOTED (4" FOR LS 3A) |
| 5. | ACCESS HATCH COVER, 4'-0" x 2'-6" OPENING, HYDR-O-MATIC. |
| 6. | ACCESS HATCH COVER, 2'-6" x 2'-6" OPENING, ALUMINUM WITH S.S. FASTENINGS. W/HASP |
| 7. | PRECAST CONCRETE VALVE VAULT
NOTE: SHOP DRAWINGS REQUIRED. |
| 8. | AUXILIARY PUMP CONNECTION, SEE DETAIL. |
| 9. | BRACKET FOR FLOAT WIRES, LIFTING RINGS, NUTS AND WASHERS TO BE STAINLESS STEEL. |
| 10. | CONTROL PANEL TO HAVE GENERATOR RECEPTACLE FOR EMERGENCY POWER. (RS JRSB1044, 125 AMP) |
| 11. | SHOP DRAWINGS TO BE APPROVED BY THE TOWN OF LONGBOAT KEY. |

DESIGNED BY PROJECT ENGINEER
DATE: 12-1-89
SCALE: A1/A
DRAWN BY A.I.A.C.
CHECKED BY PROJECT NO. PK99-001-AB

REVISION

L.T.R. DATE

FLORIDA

TOWN OF LONGBOAT

LIFT STATION AS-BUILT FOR 3H

ENGINEER BISHOP & ASSOCIATES - 78 SARASOTA, FLORIDA 34240 (813) 378-6362

SHEET NUMBER 4 AB

REVISION

T.L.K. FILE NO.