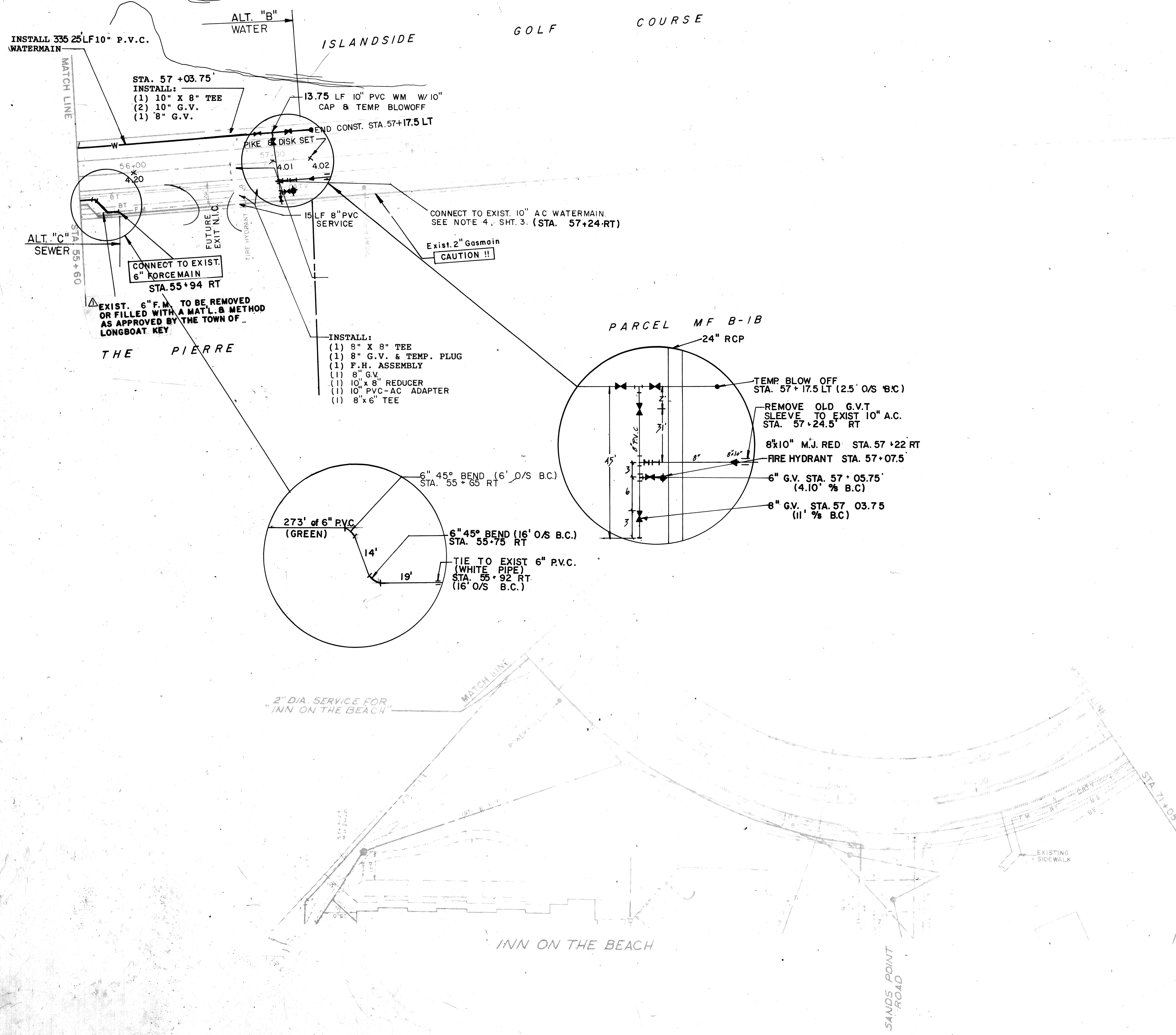
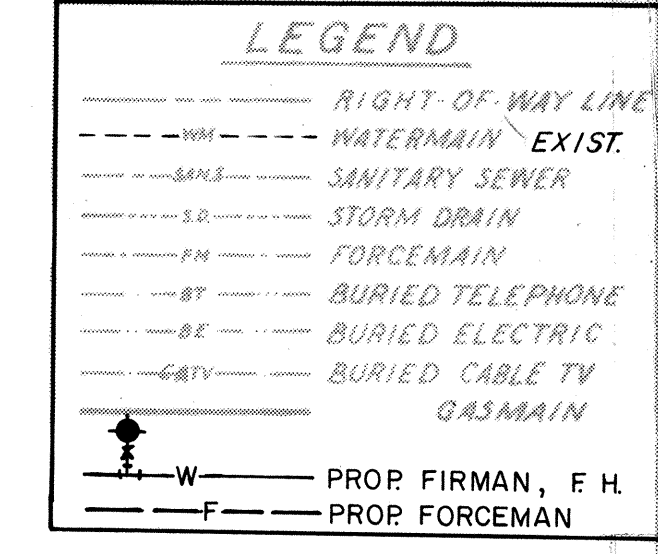


ALSO NOTIFY:  
 F.P. & L. 953-7265  
 TOWN OF LONGBOAT KEY 383-3721  
 IRRIGATION (ARVIDA)  
 DEXTER ARCADIA 383-5667  
 SOUTHERN GAS 365-1595

INVESTIGATE BEFORE YOU EXCAVATE  
**"CALL CANDY"**  
 1-800-282-8881  
FL STATE 503.051 (1978) REQUIRES MIN. OF 2 DAYS AND MAX. OF 5 DAYS NOTICE BEFORE YOU EXCAVATE.



ITEM	STATION	DISTANCE FROM BACK OF CURB	TIE TO NEAREST LIGHT POLE	TIE TO NEAREST FIRE HYDRANT
10" G.V.	57+1.5 LT.	2.5'	S.W. CORNER 40.33'	35.67'
8" G.V. TO S. PIERRE	57+03.75 LT.	0.5'	S.W. CORNER 42.67'	33.5'
8" G.V. TO S. PIERRE	57+03.75 LT.	11.0'	S.W. CORNER 63.5'	7.25'
6" G.V. TO FIRE HYDRANT	57+05.75 RT.	4.1'		
10" G.V.	57+06.5 LT.	2.5'	S.W. CORNER 45.17'	35.33'
BLOWOFF	57+17.5 LT.	2.5'	S.W. CORNER 56.5'	36.33'



PROJECT ENGINEER

DESIGNED BY: PP

DATE: 12-01-89

CHECKED BY: RWC

SCALE: 1" = 40'

BY:

REVISION

L.T.R. DATE

**TOWN OF LONGBOAT KEY, FLORIDA**

LONGBOAT CLUB ROAD - UTILITY REPLACEMENT

ENGINEER & LOCATION: BISHOP & ASSOCIATES 78 SARASOTA CENTER BLVD. SARASOTA, FL 34240

SHEET NUMBER: PRSA-0001

REVISION: AB 3

T.L.K. FILE NO.