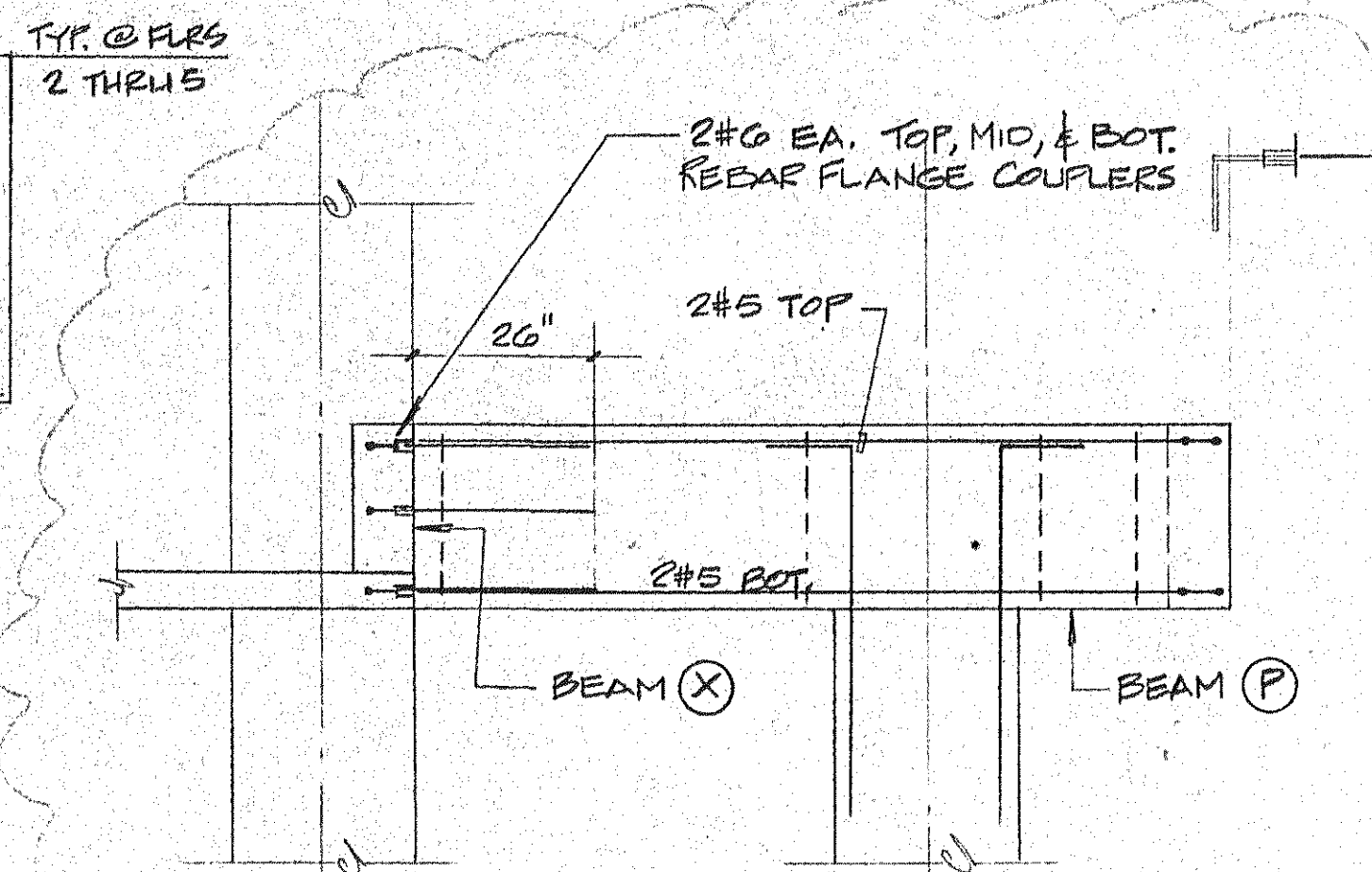
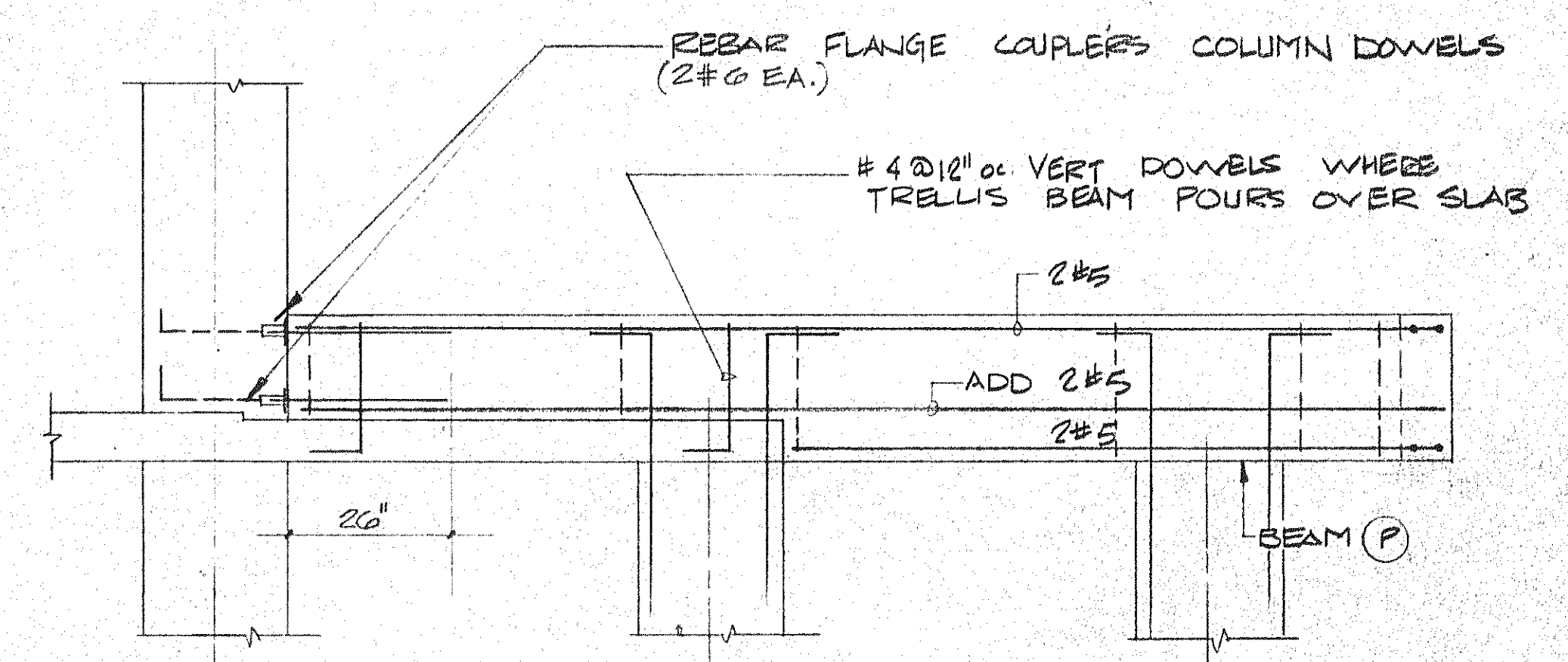


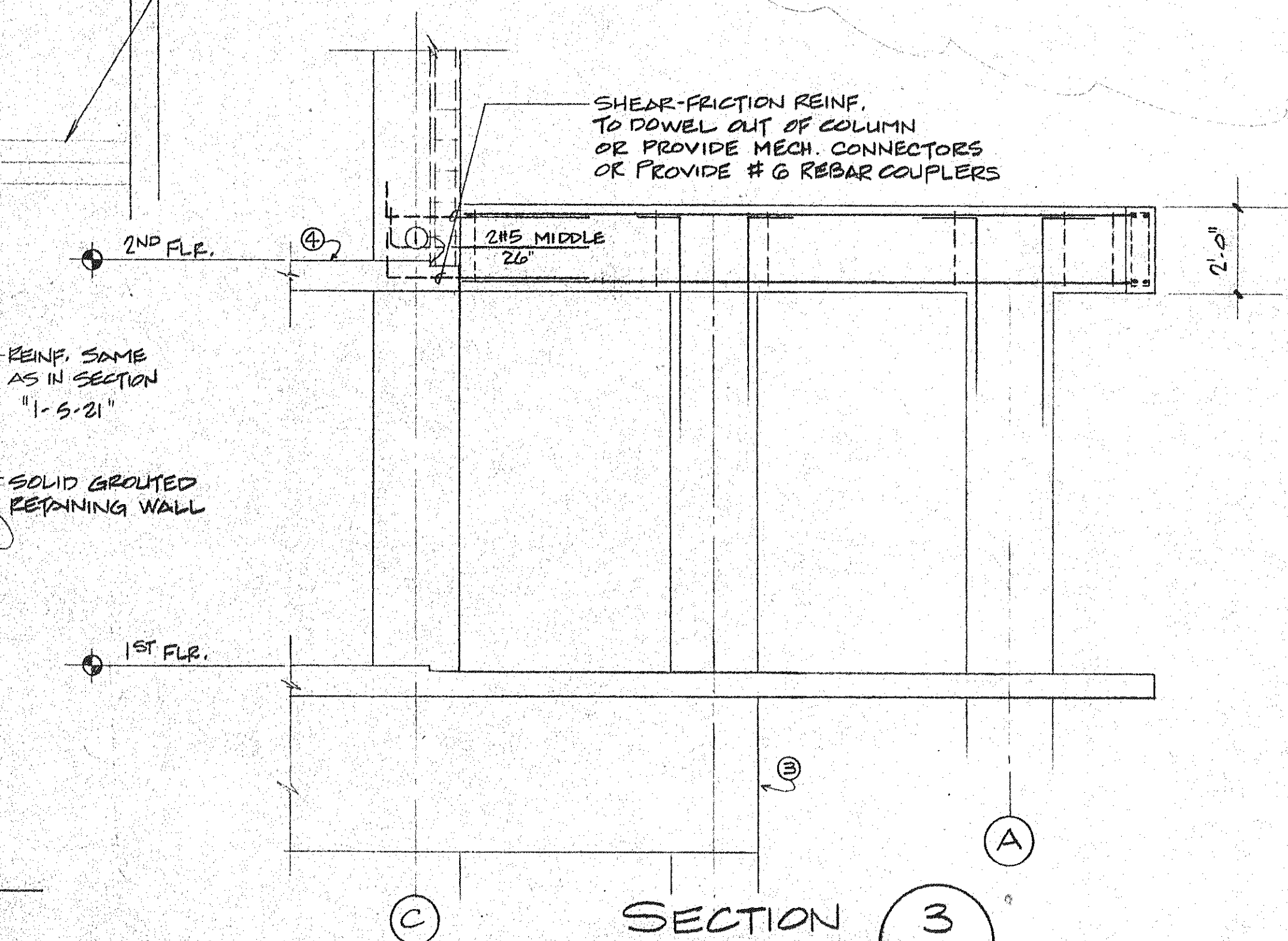
DETAIL A RAIL WALL ELEVATION
S-21 1/2" = 1'-0"



SECTION C S-21 1/2" = 1'-0"



TYPICAL TRELLIS BEAM DETAIL B S-21 1/2" = 1'-0"



SECTION 3 S-21 3/8" = 1'-0"

SECTION 1 S-21 3/8" = 1'-0"

SECTION 2 S-21 3/8" = 1'-0"

- LEGEND
- ① 3/4" DAP OUT (STEP) TO OCCUR BEHIND WALLS & DOOR MULLIONS
 - ② SLOPE SLAB DOWN TO EXTERIOR FACE OF BUILDING
 - ③ TRANSFER BEAM
 - ④ 8" CONC. SLAB
 - ⑤ 8 3/4" CONC. SLAB