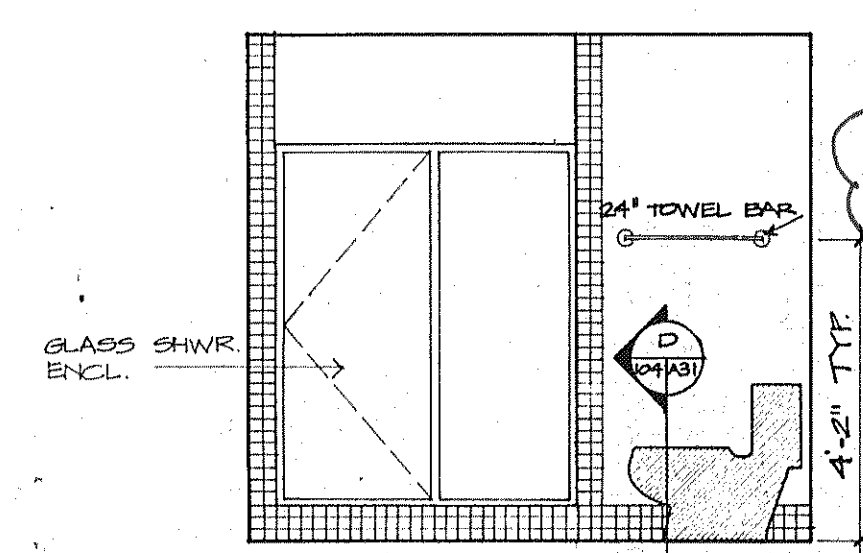
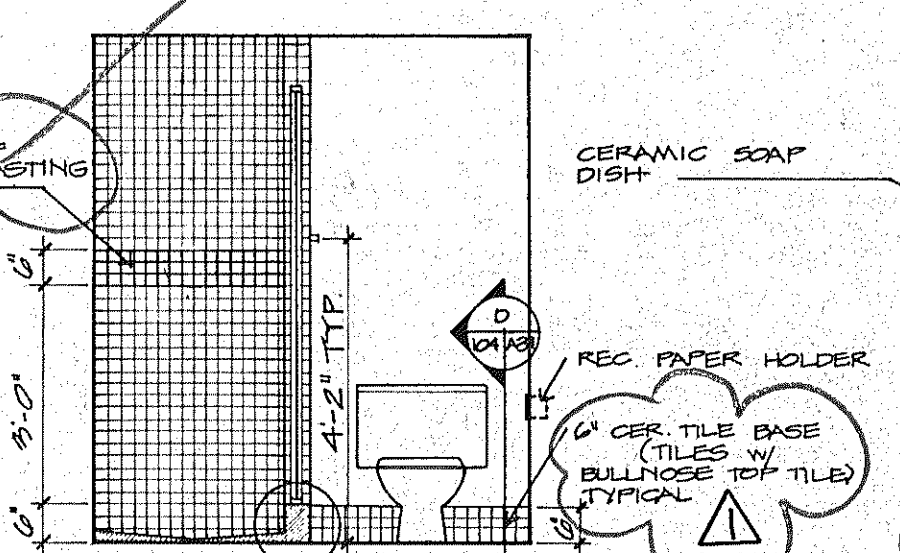


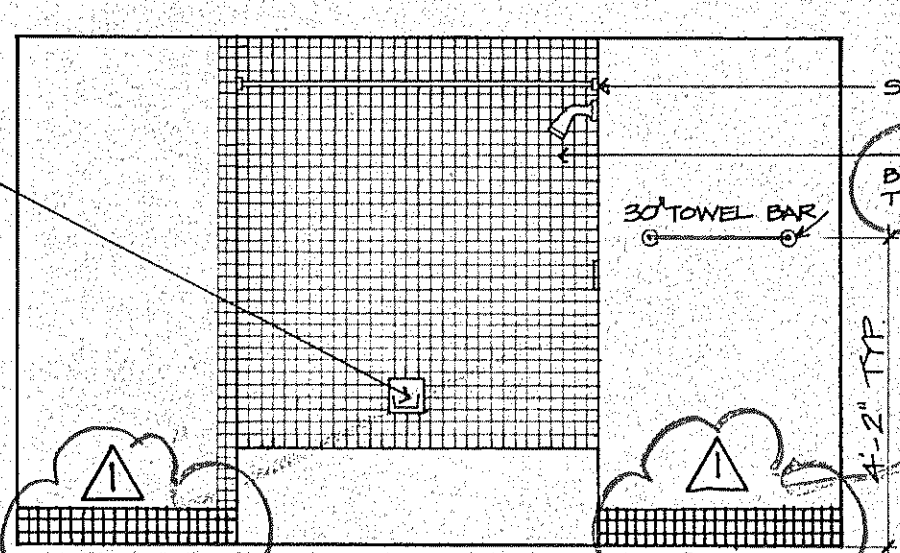
- NOTES:**
1. SEE (D) FOR KITCHEN CABINET WOOD TRIM & PULLS
 2. VERIFY CABINET OPENINGS W/ APPLIANCES PRIOR TO FABRICATION
 3. MEDICINE CABINETS TO BE BUILT IN W/ MIRROR FACE
 4. ALLOW FOR MARBLE SILL BETWEEN CERAMIC TILE & CARPET



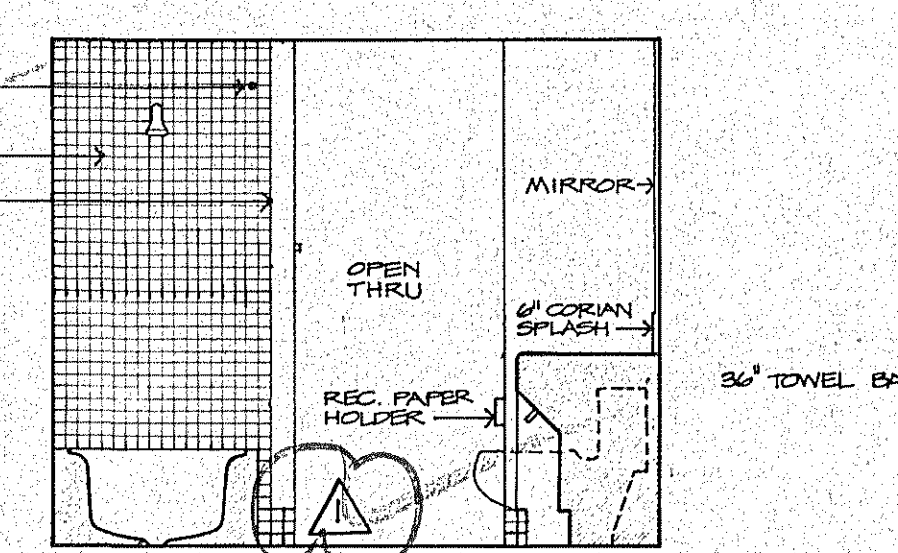
ELEV. 27
UNITS B-R, B+R
REVERSE B-L, B+L
BATH 1



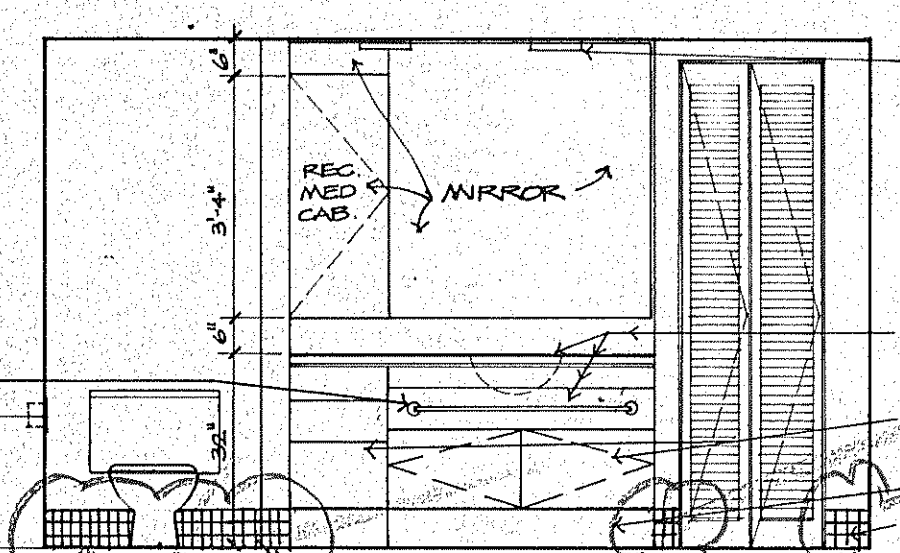
ELEV. 28



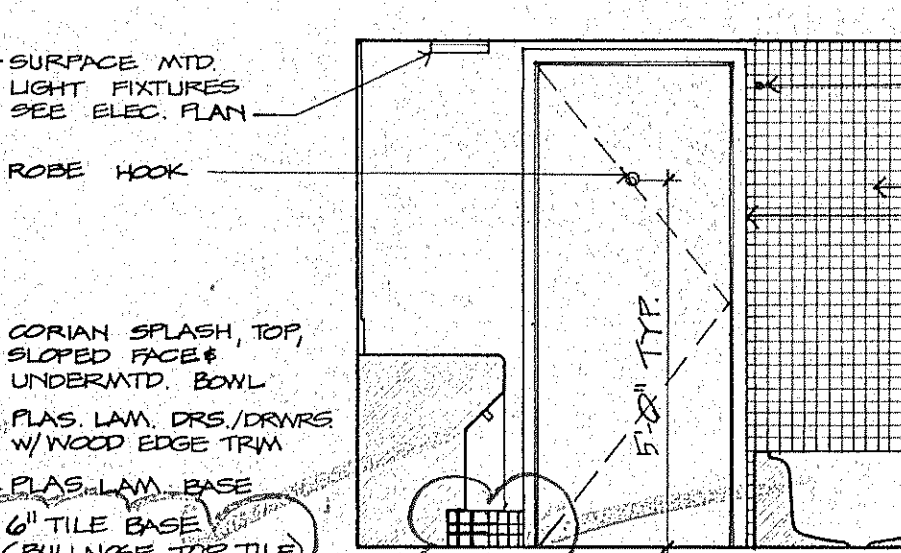
ELEV. 29
UNITS B-R, B+R
REVERSE B-L, B+L
BATH 2



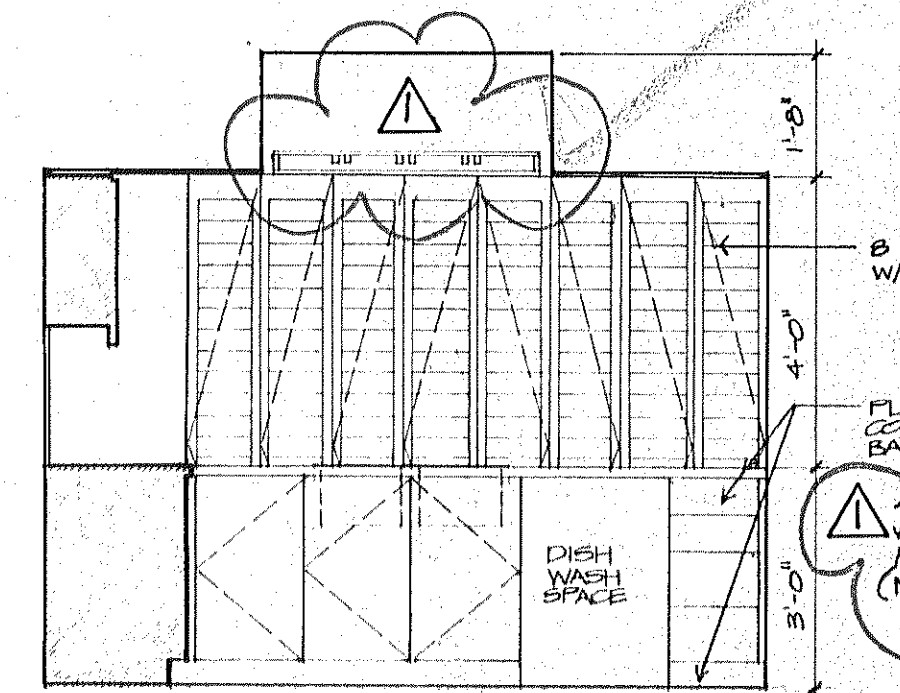
ELEV. 30



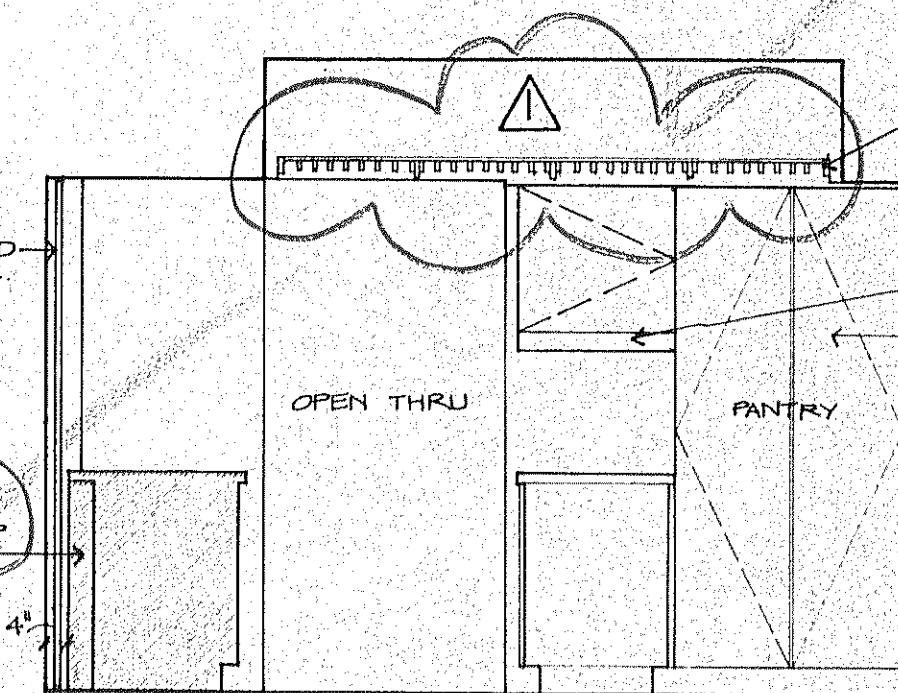
ELEV. 31



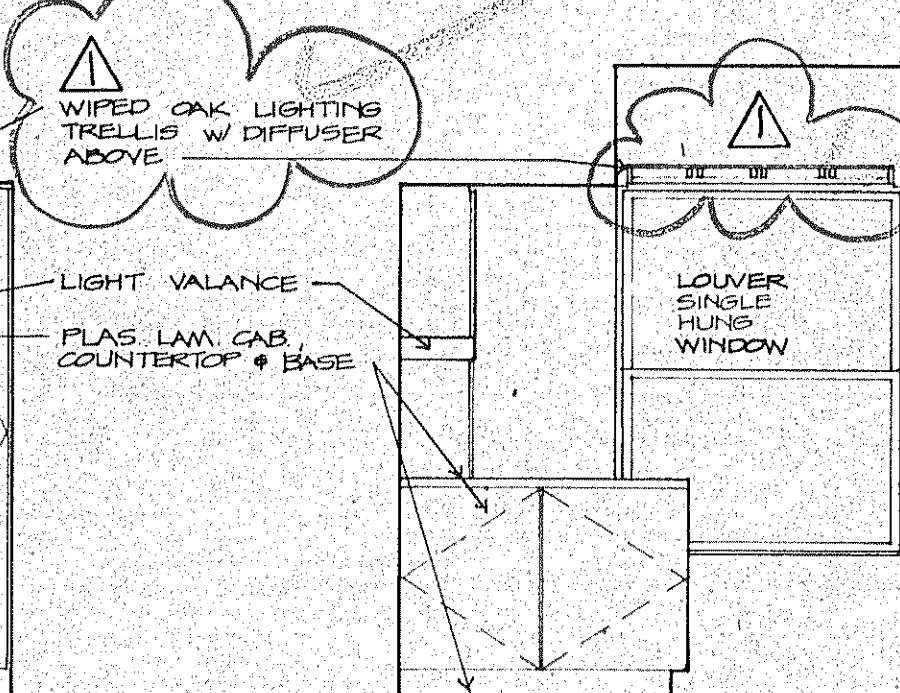
ELEV. 32



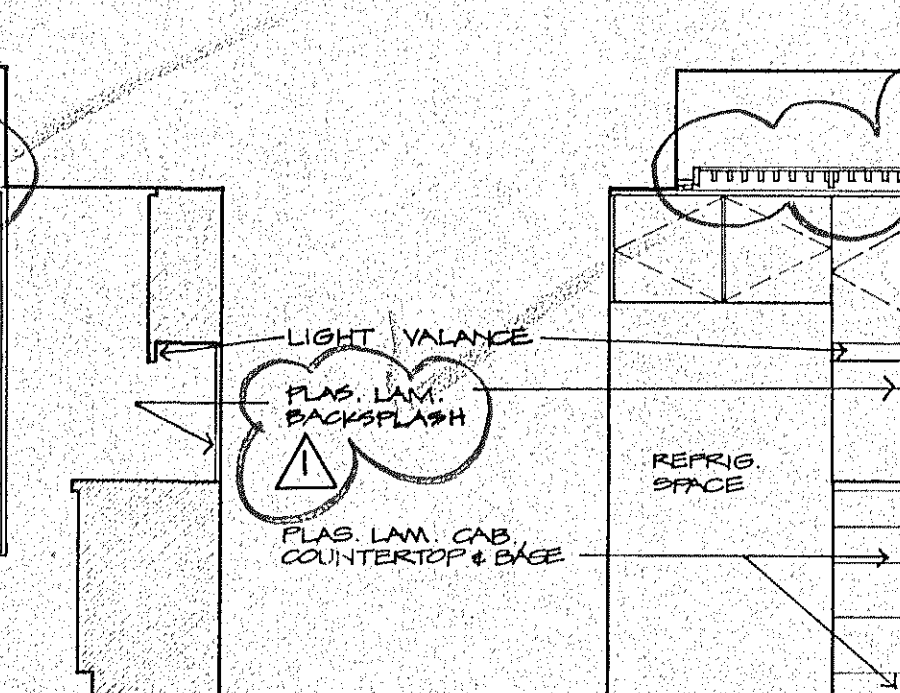
ELEV. 33
UNITS C-R, C+R, C-MOD-R, D-R, D+R, D-MOD-R
REVERSE C-L, C+L, C-MOD-L, D-L, D+L, D-MOD-L
KITCHEN



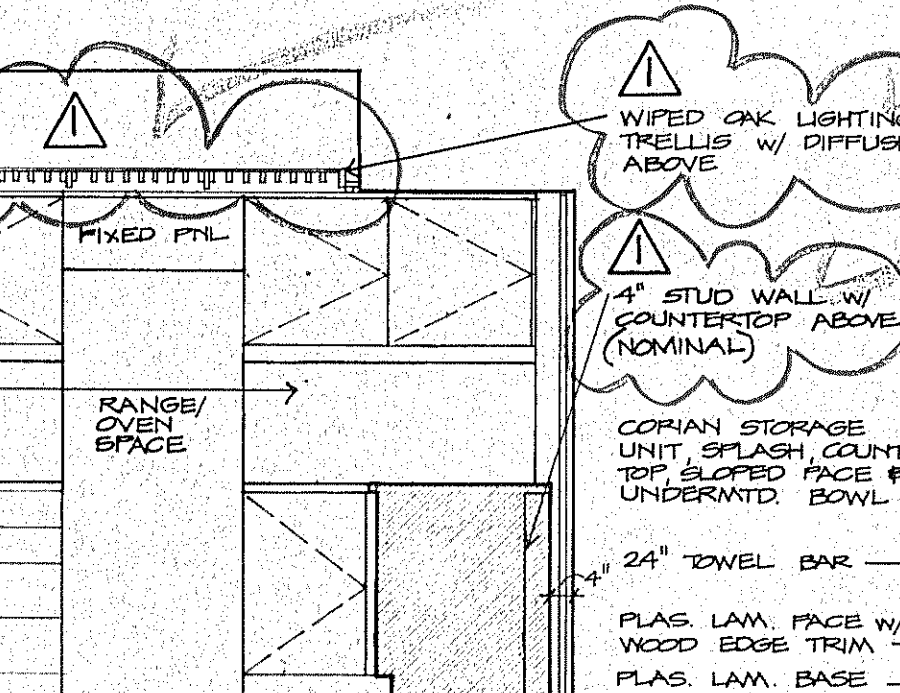
ELEV. 34



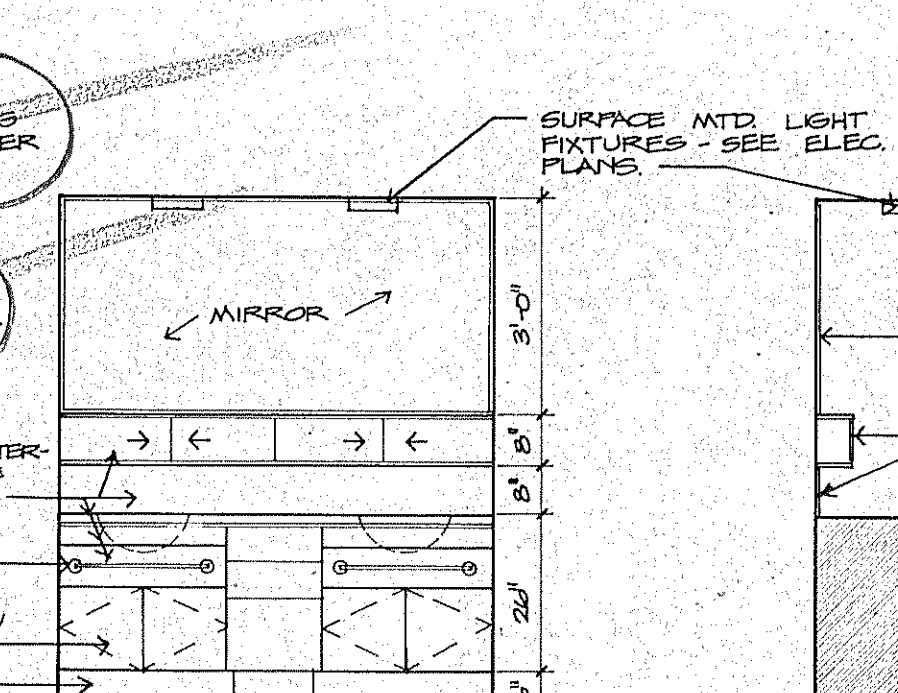
ELEV. 35



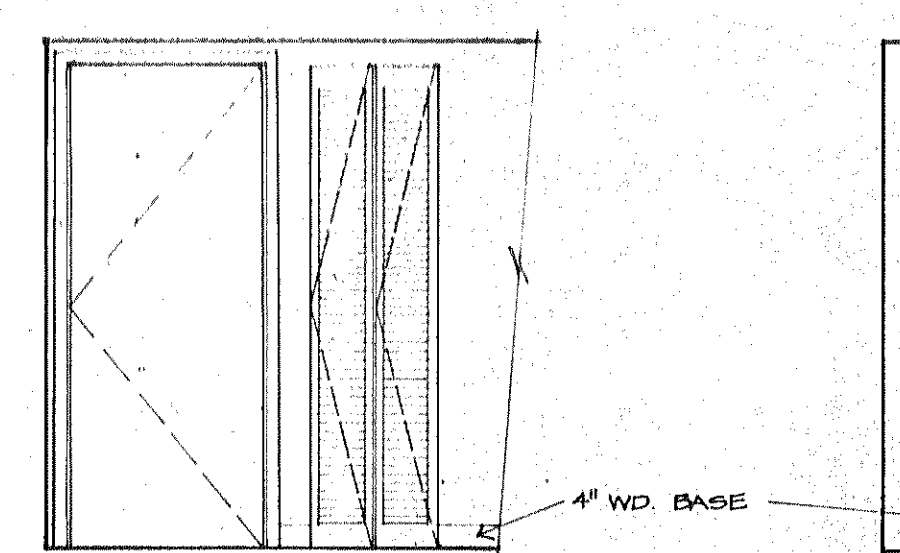
ELEV. 36



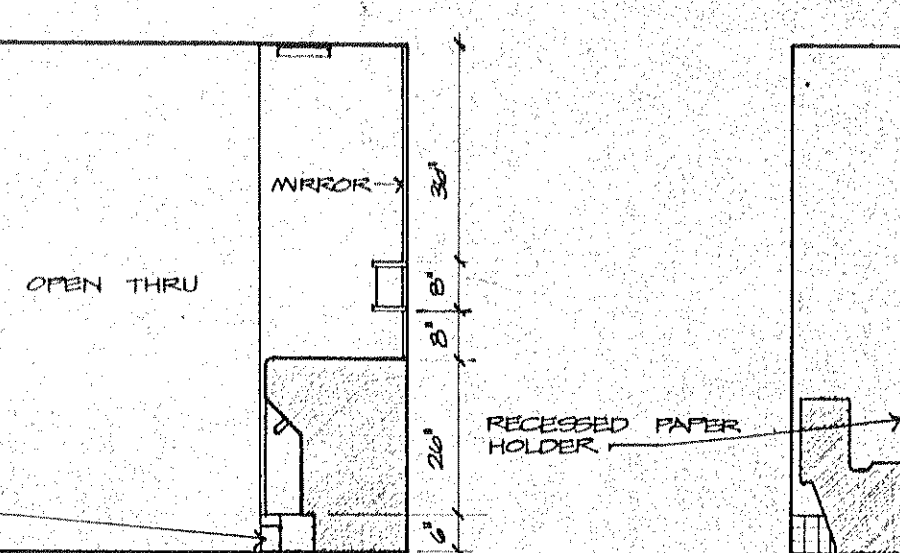
ELEV. 37
UNITS C-R, C+R, C-MOD-R
REVERSE C-L, C+L, C-MOD-L
DRESSING



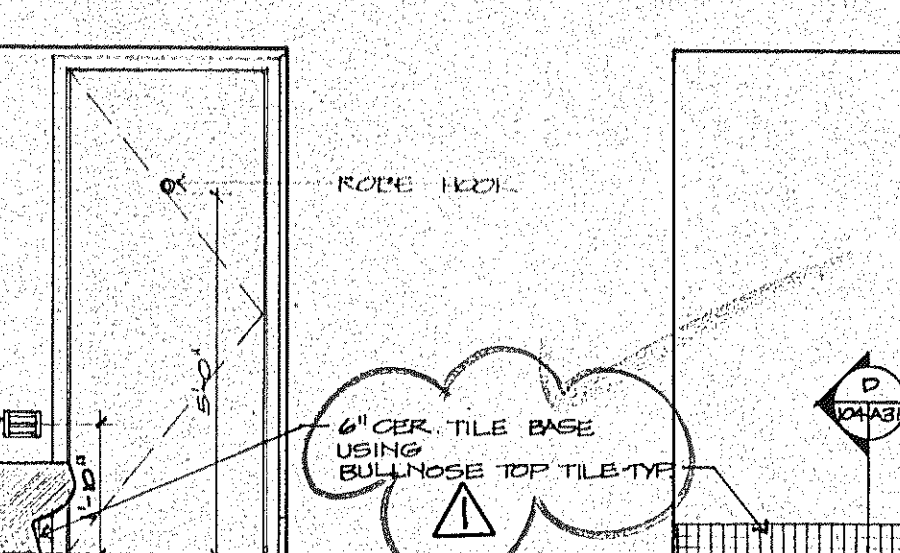
ELEV. 38



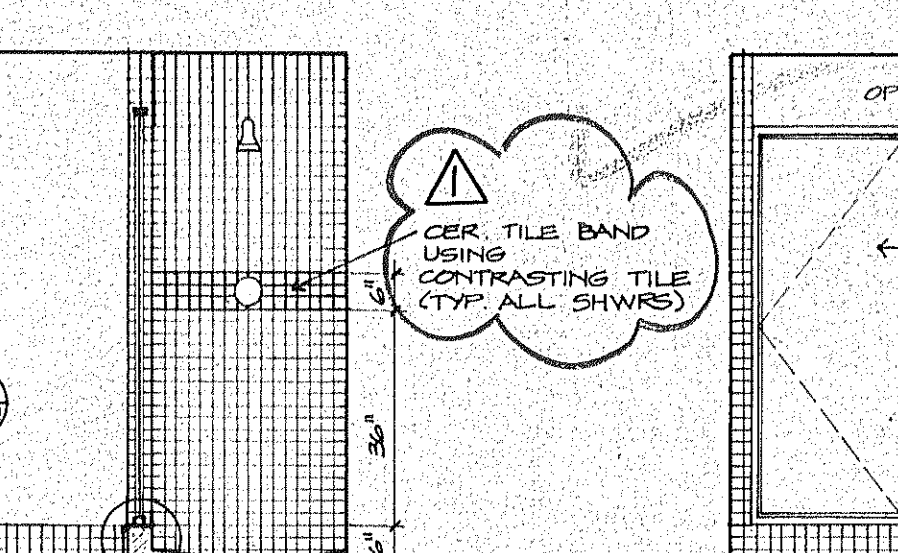
ELEV. 39



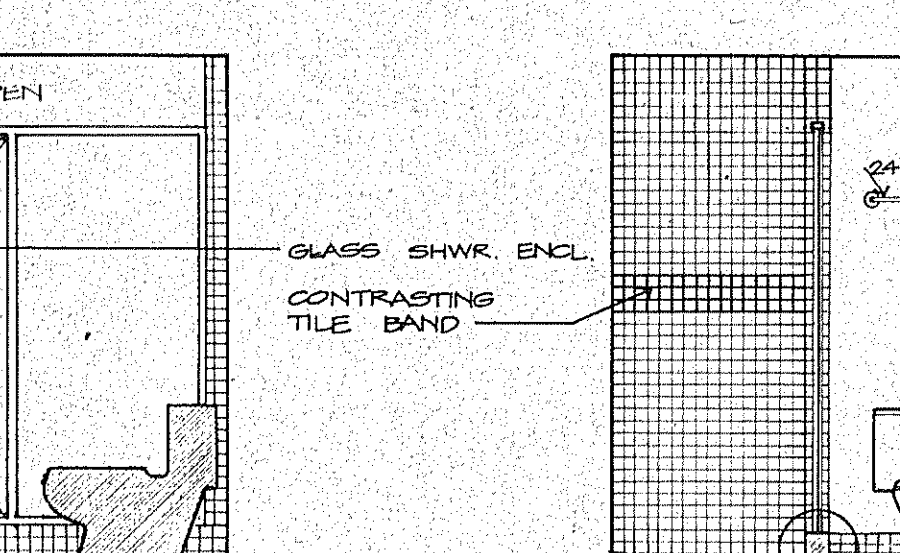
ELEV. 40



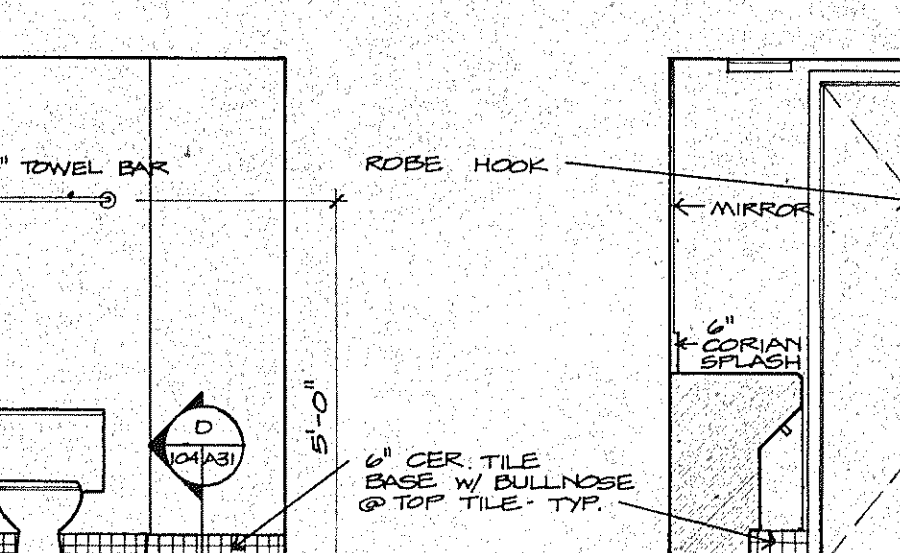
ELEV. 41
UNITS C-R, C+R, C-MOD-R
REVERSE C-L, C+L, C-MOD-L
BATH 1



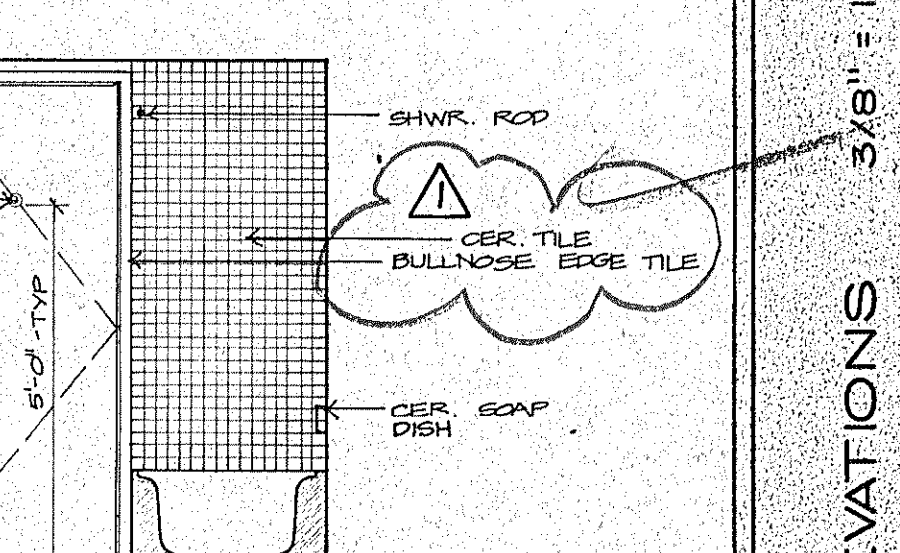
ELEV. 42



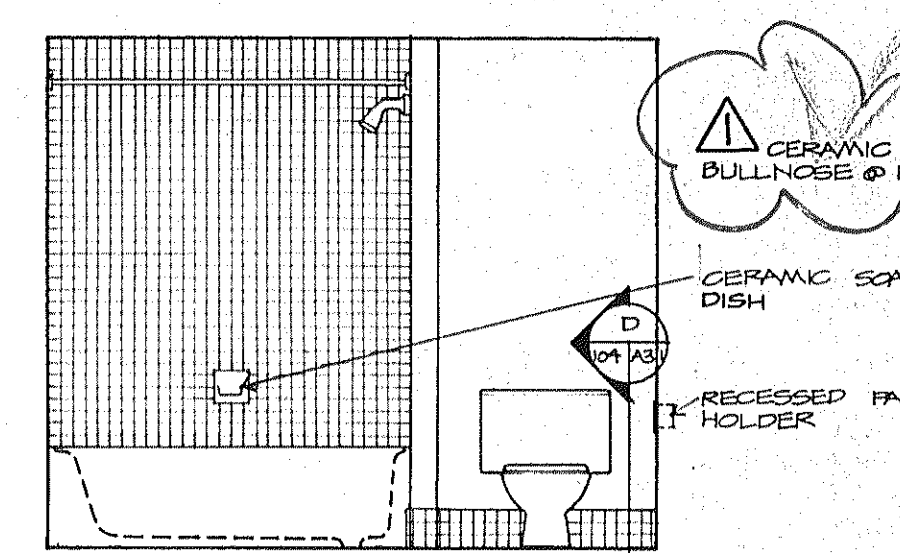
ELEV. 43



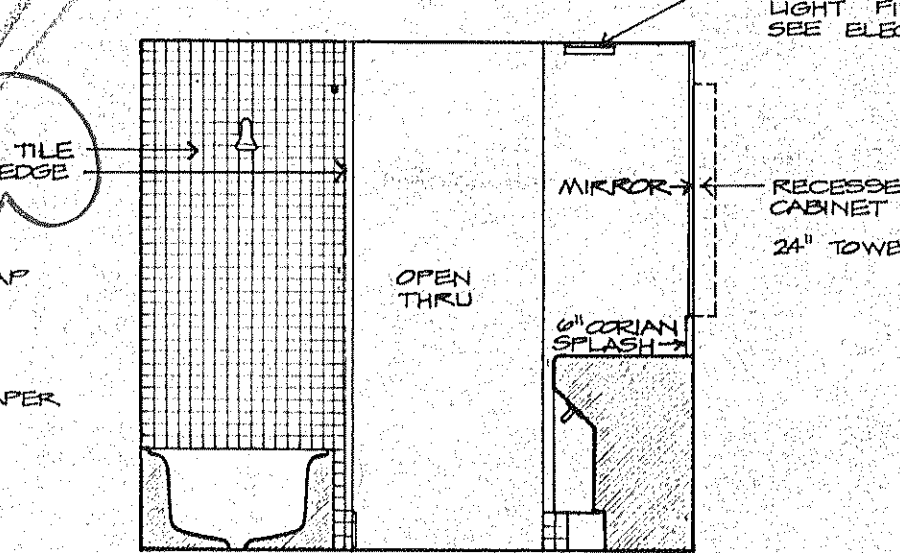
ELEV. 44



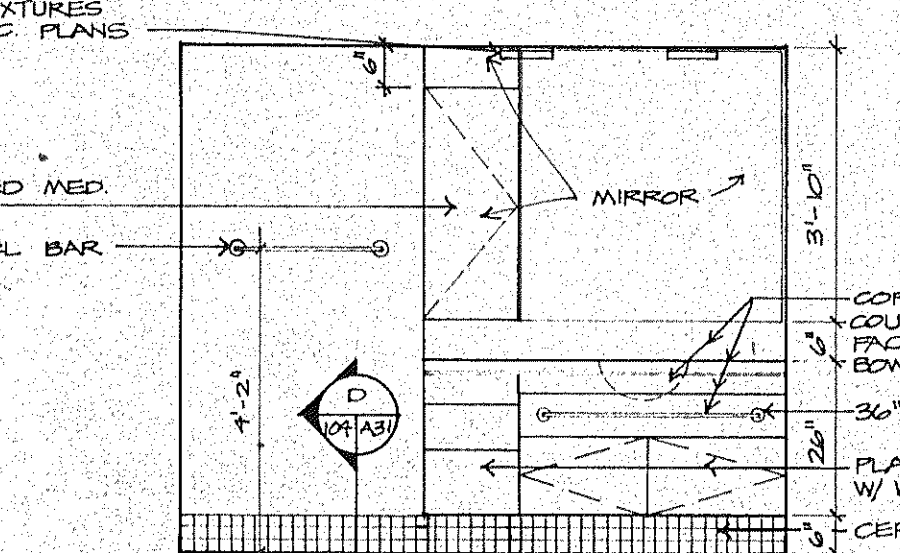
ELEV. 45
UNITS C-R, C+R, C-MOD-R
REVERSE C-L, C+L, C-MOD-L
BATH 2



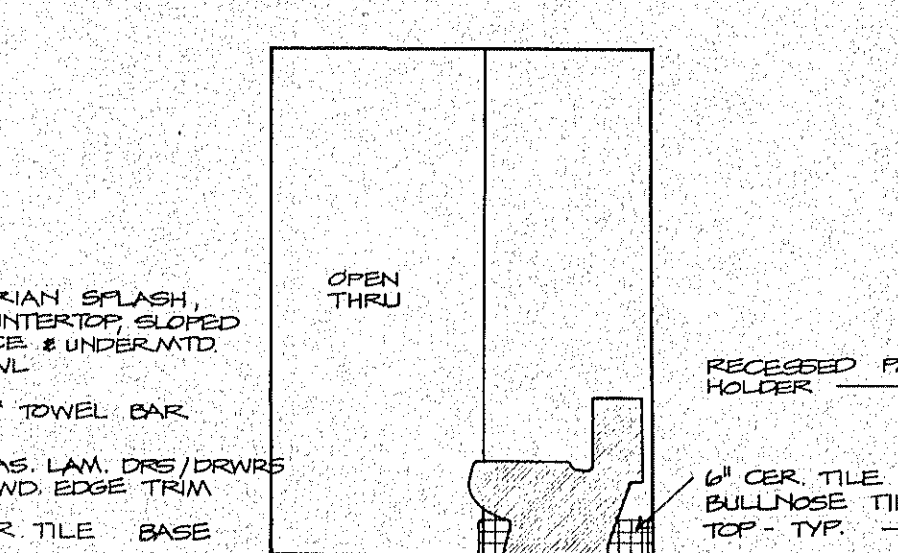
ELEV. 46



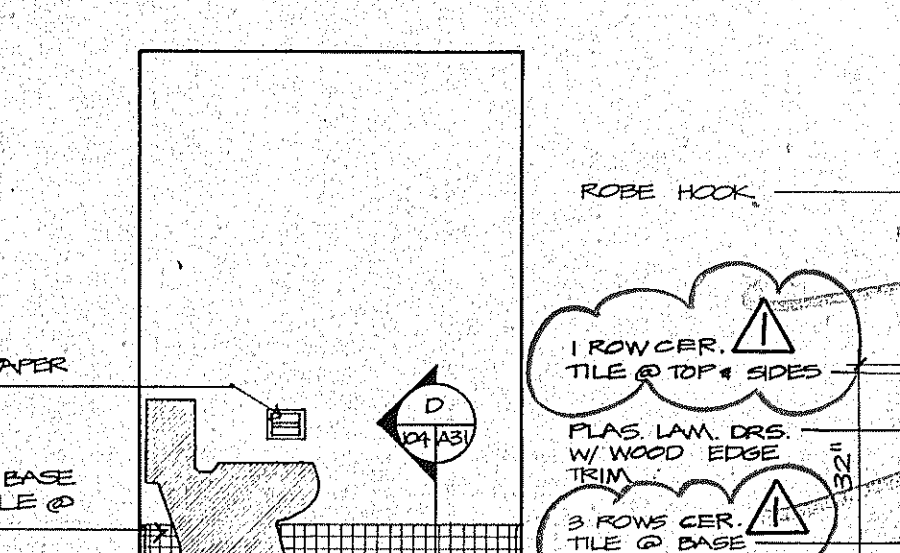
ELEV. 47



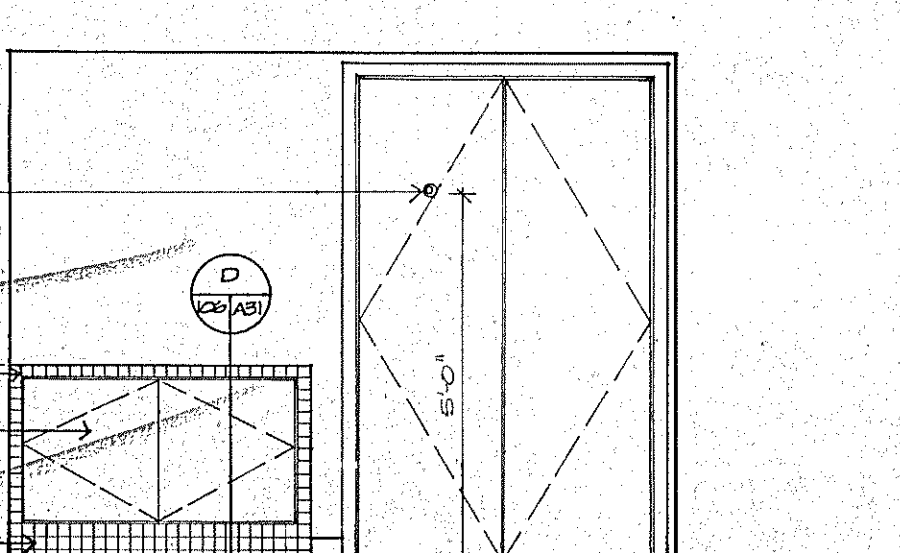
ELEV. 48



ELEV. 49



ELEV. 50



ELEV. 51
UNIT D+R
REVERSE D+L
BATH 1

SUNSET BEACH BOAT KEY
 INTERIOR ELEVATIONS 3/8" = 1'-0"
 ISSUED 10 DEC. 82
 REVISED 4-1-83
 SHEET A-31 OF 37
 ARVADA CORPORATION, EDWARD J. SEIBERT, AIA, ARCHITECT & PLANNER SA, THE SWA GROUP
 BRABHAM, KUBINS, DEBAY, CONSULTING ENGINEERS, OLSEN, WHITE & ASSOCIATES, STRUCTURAL ENGINEERS, BENNETT & BISHOP, INC. CONSULTING ENGINEERS & SURVEYORS