
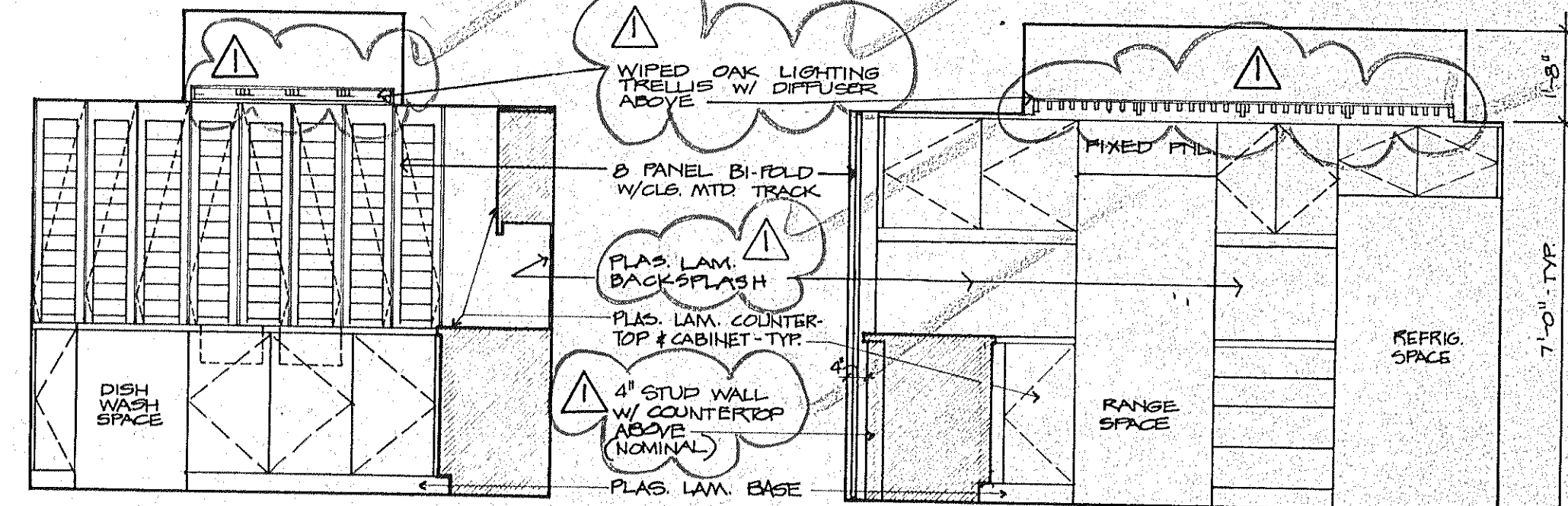


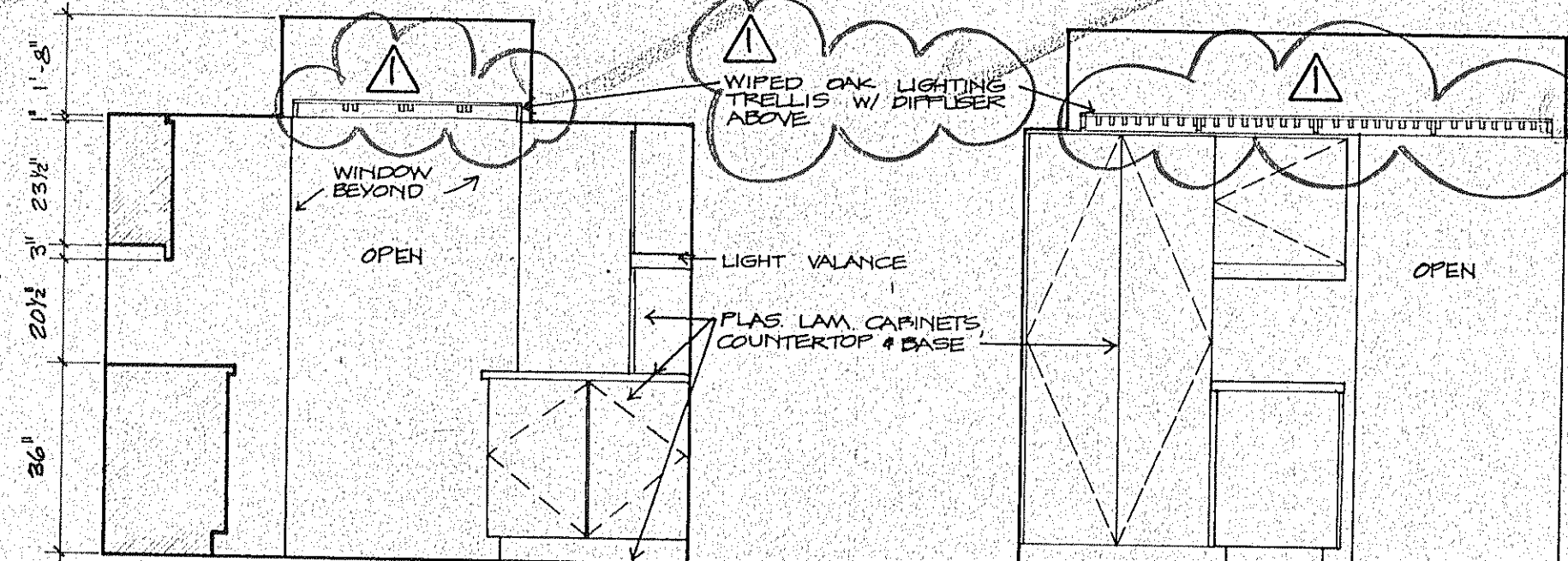
NOTES:

1. SEE  FOR KITCHEN CABINET WOOD TRIM & PULLS
2. VERIFY CABINET OPENINGS W/ APPLIANCES PRIOR TO FABRICATION.
3. MEDICINE CABINETS TO BE BUILT-IN W/ MIRROR FACE
4. ALLOW FOR MARBLE SILL BETWEEN TILE FLOORS (CERAMIC TILE) & CARPET



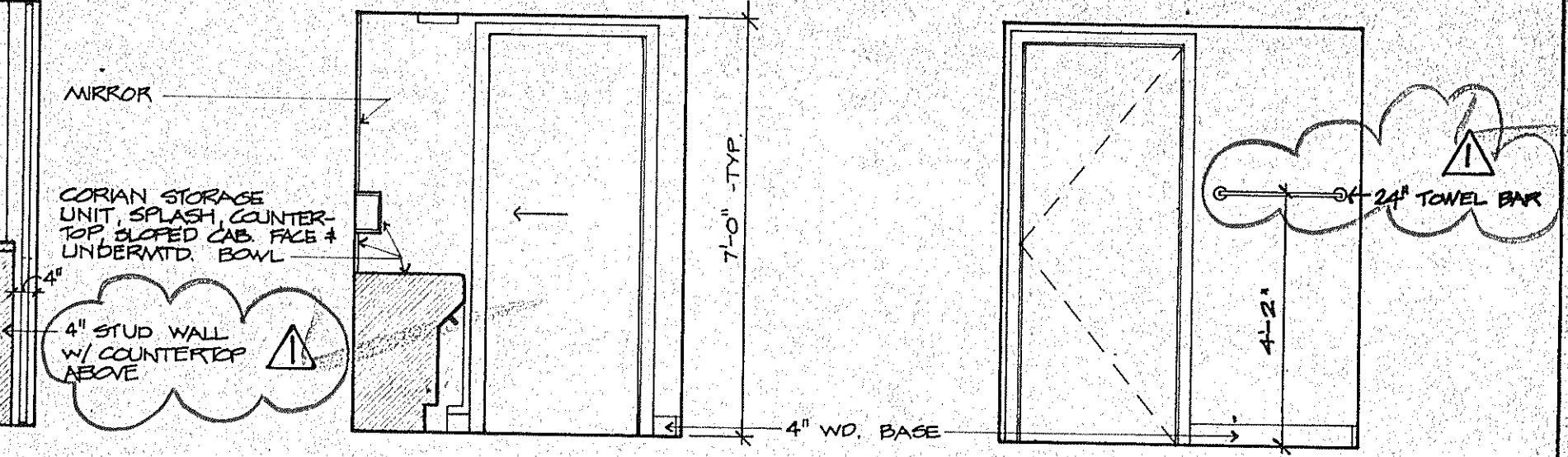
ELEV. 1
UNITS A-R, A+R
REVERSE A-L, A+L
KITCHEN

ELEV. 2



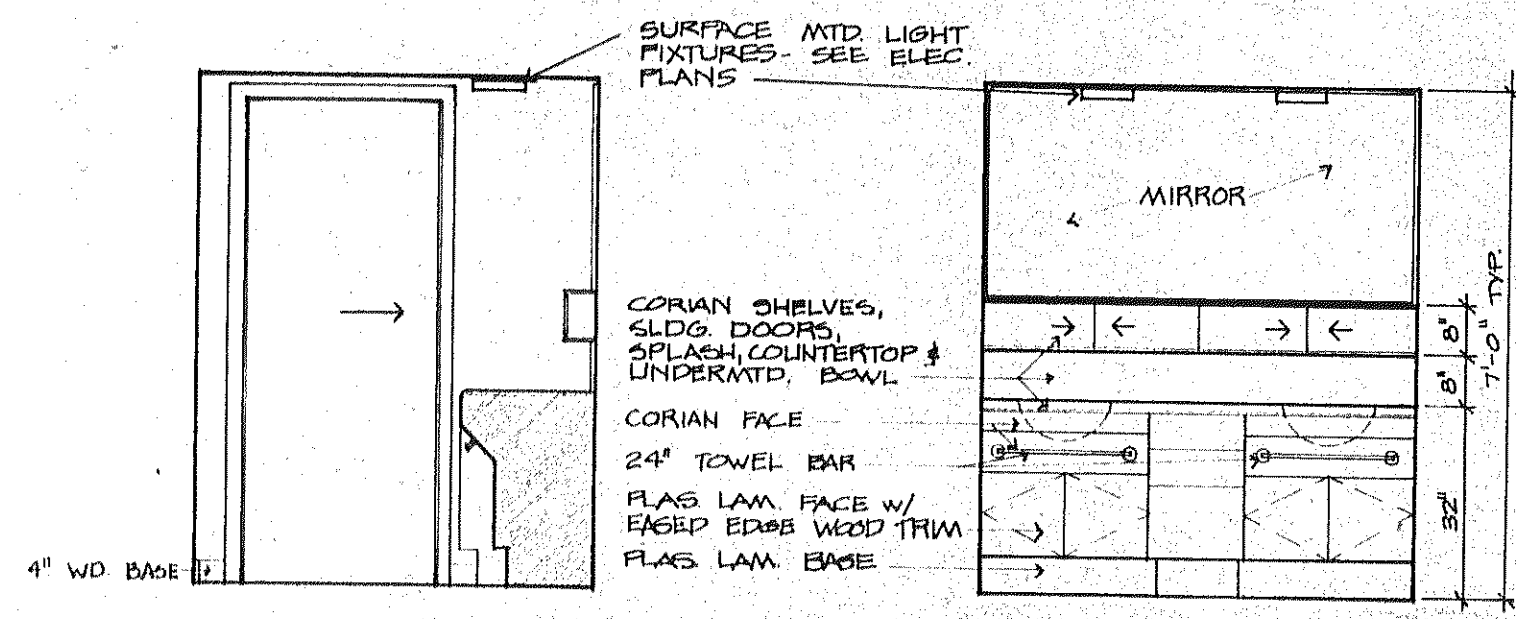
ELEV. 3

ELEV. 4



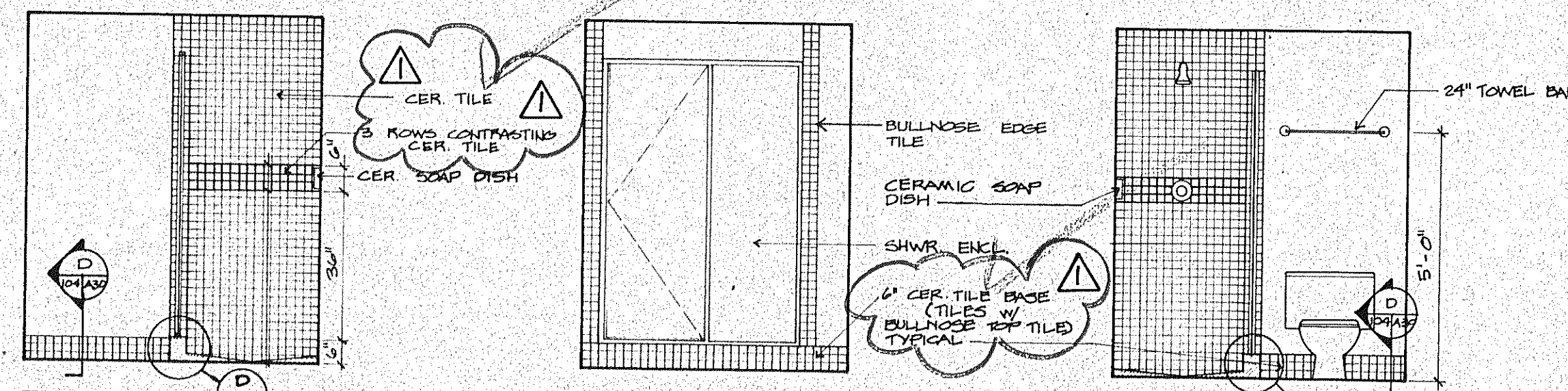
ELEV. 5
UNITS A-R, A+R
REVERSE A-L, A+L
DRESSING

ELEV. 6



ELEV. 7

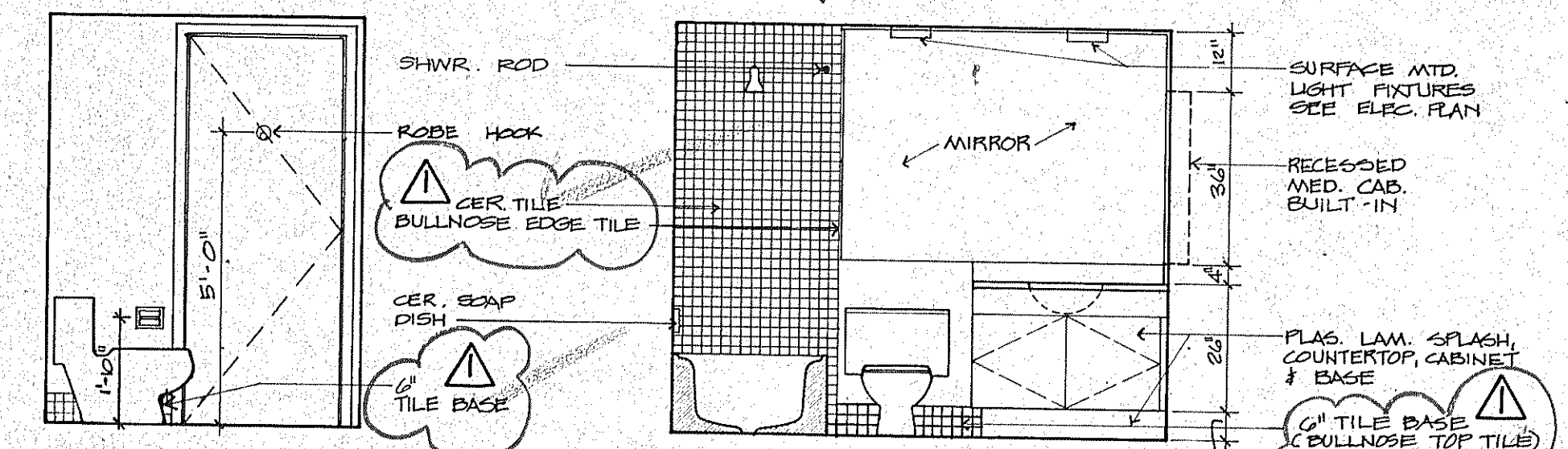
ELEV. 8



ELEV. 9
UNITS A-R, A+R
REVERSE A-L, A+L
BATH 1

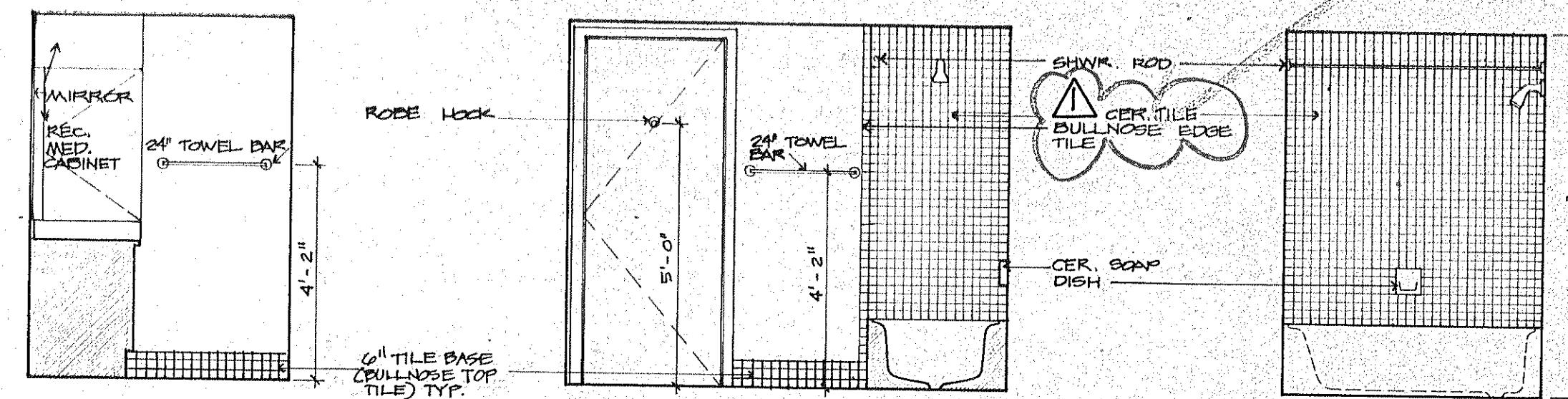
ELEV. 10

ELEV. 11



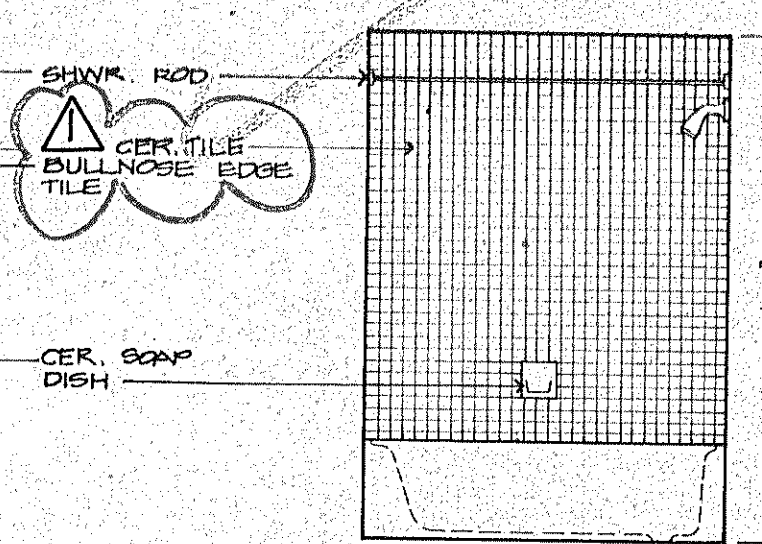
ELEV. 12

ELEV. 13
UNITS A-R, A+R
REVERSE A-L, A+L
BATH 2

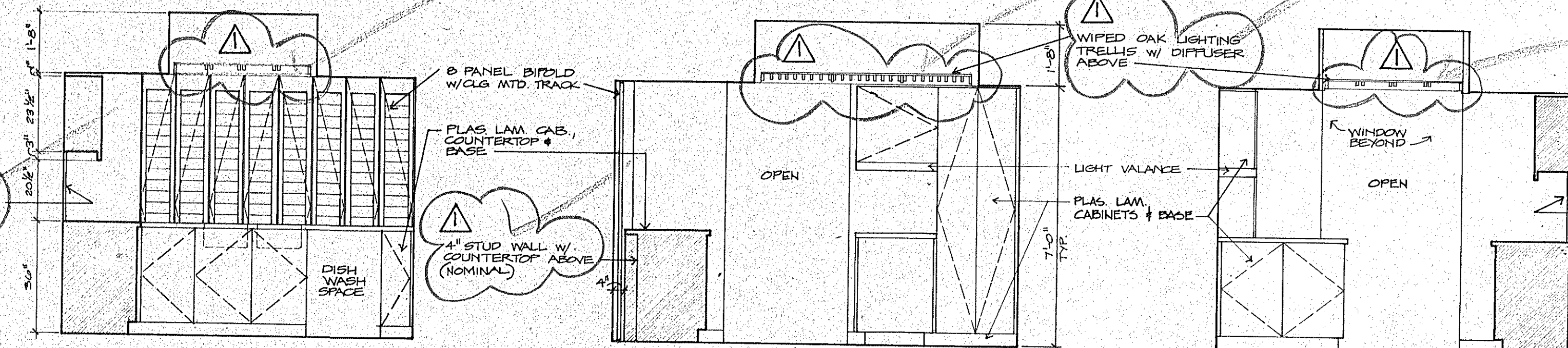


ELEV. 14

ELEV. 15



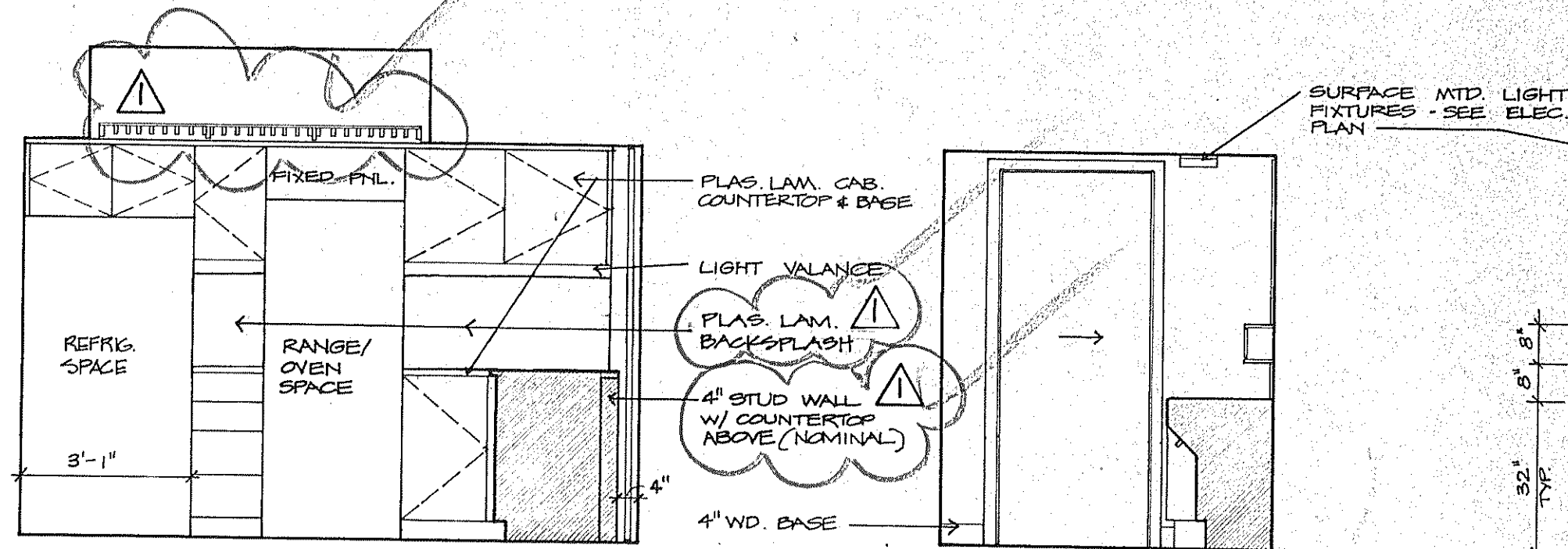
ELEV. 16



ELEV. 17
UNITS B-R, B+R
REVERSE B-L, B+L
KITCHEN

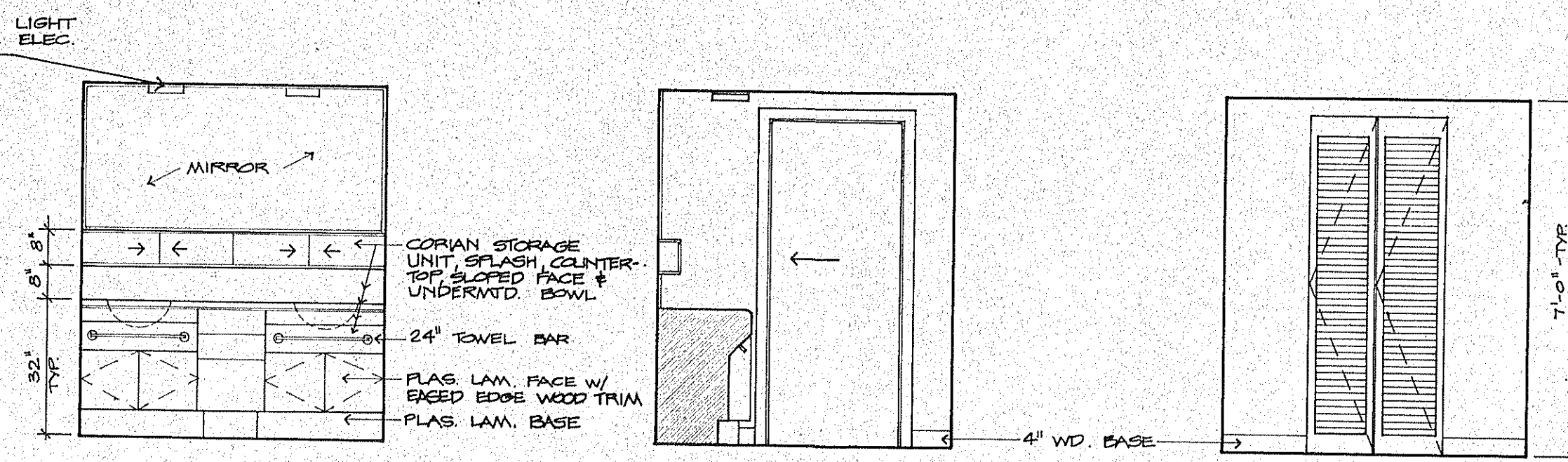
ELEV. 18

ELEV. 19



ELEV. 20

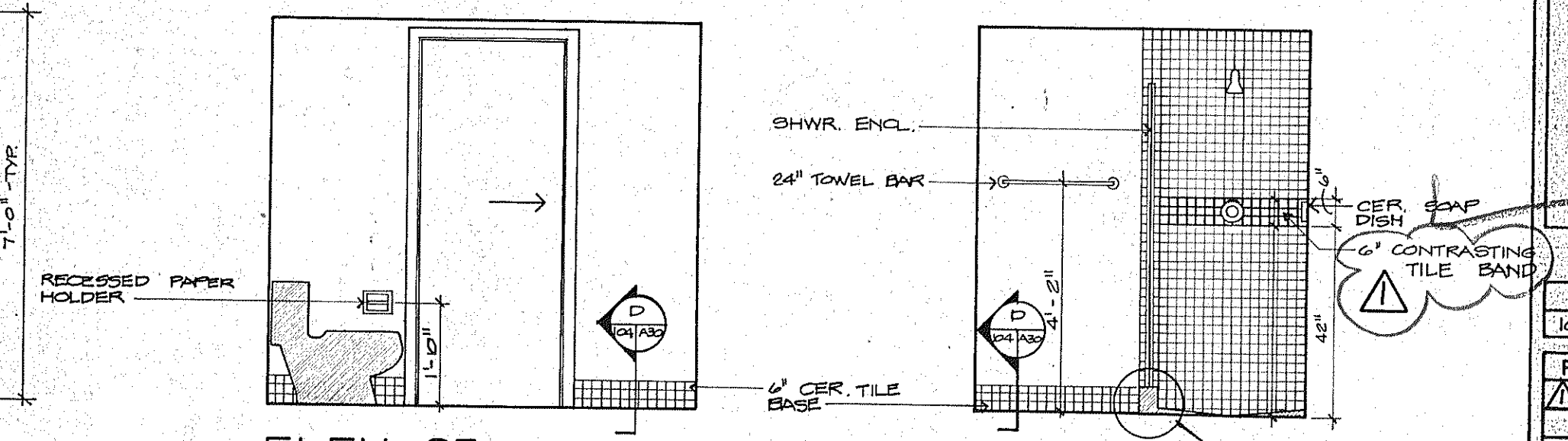
ELEV. 21
UNITS B-R, B+R
REVERSE B-L, B+L
DRESSING



ELEV. 22

ELEV. 23

ELEV. 24



ELEV. 25
UNIT B-R, B+R
REVERSE B-L, B+L
BATH 1

ELEV. 26

SUNSET BEACH
 SOF LONC BOAT KEYS
 INTERIOR ELEVATIONS 3/8" = 1'-0"
 ARVIDA CORPORATION, EDWARD J. SEBERT, AIA, ARCHITECT & PLANNER, P.C., THE SWA GROUP
 BRABHAM, KUHN, DEBAY CONSULTING ENGINEERS, OLSEN, WHITE & ASSOCIATES, STRUCTURAL ENGINEERS, BENNETT & BISHOP, INC. CONSULTING ENGINEERS & SURVEYORS
 ISSUED 10 DEC '92
 REVISED 4-1-93
 SHEET
 A 30
 OF 37