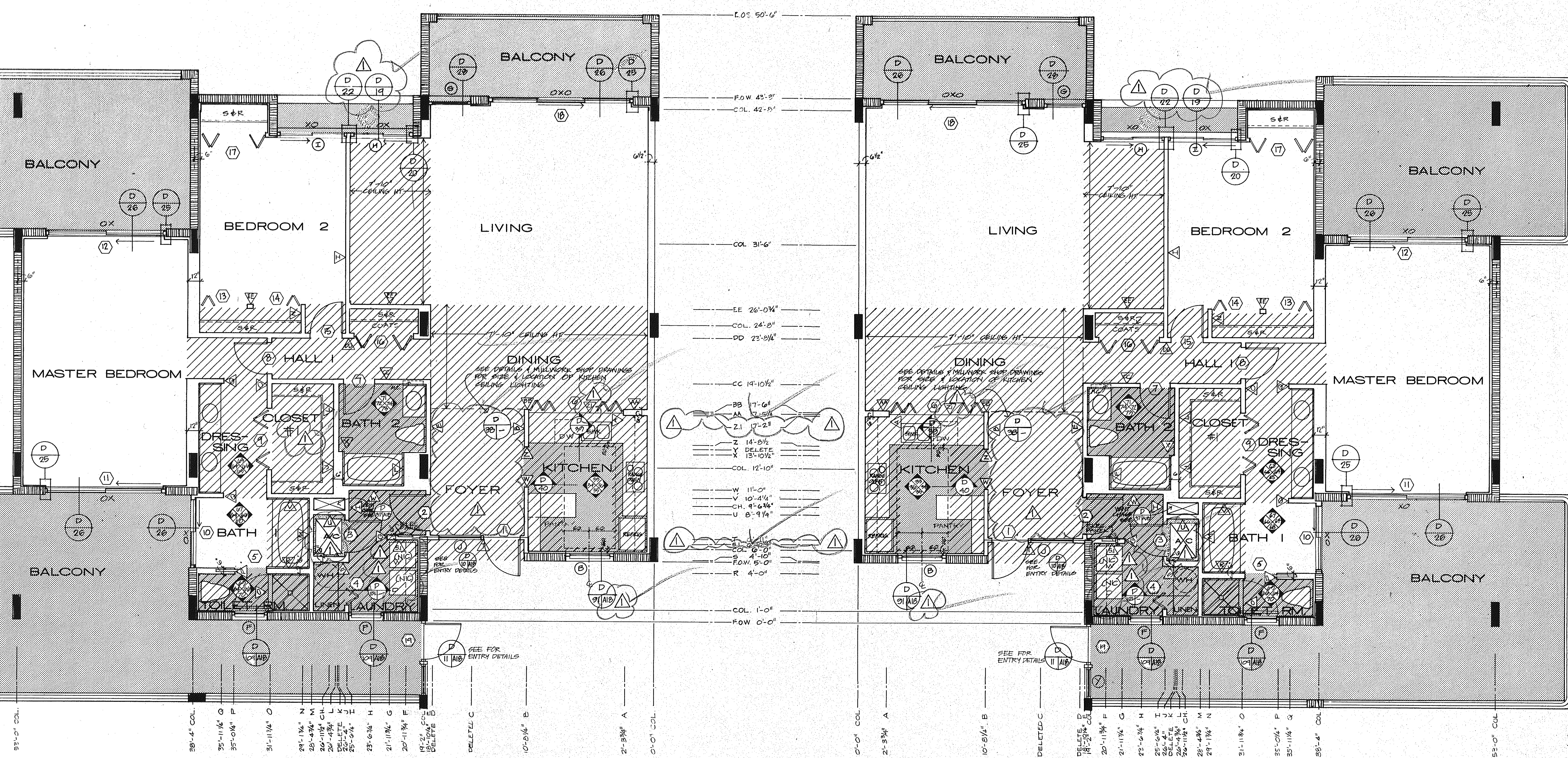


OVERLAP COMPOSITE

SUNSET BEACH
 OF LONG BEACH KEY
 ARVIDA CORPORATION · EDWARD J. SEIBERT AIA ARCHITECT & PLANNER P.A. THE SWA GROUP
 BRABHAM KUHN DEBAY CONSULTING ENGINEERS · OLSEN WHITE & ASSOCIATES STRUCTURAL ENGINEERS · BENNETT & BISHOP INC CONSULTING ENGINEERS & SURVEYORS
 UNIT D MOD. PLANS 1/4" = 1'-0"
 ISSUED 10 DEC 82
 REVISED 4-1-83
 SHEET A 18 OF 37



- NOTES:**
- SEE 1/8" BLDG PLANS FOR COLUMN & SHEAR WALL LOCATIONS
 - ALL DROPPED CEILING ARE 7'-0" UNLESS OTHERWISE NOTED
 - ALL DIMENSIONS ARE FROM CENTERLINE OF WALL
 - SEE DETAIL BOOKLET FOR DOOR, WINDOW & FINISH SCHEDULES
 - SCREEN DOT TEXTURE DENOTES PAPER, CER TILE, VINYL TILE OR SEE FINISH SCHEDULE FOR EXACT LOCATIONS
 - VERIFY EXACT LOCATION OF L.A.S. W/ ARCHITECT
 - DASHED LINE ABOVE THE WASHER/DRYER IS A CONTINUOUS UPPER CABINET W/ DOORS. CONSTRUCTION IS TO BE PER THE KITCHEN UPPER CABINETS EXCEPT DELETE ALL WD. TRIM. PULLS TO BE RECESSED OAK.
 - SEE SHEET A-9 FOR PLAN DIMENSIONING KEY.