

OVERLAYS
COMPOSITE
16 16
17 17
18 18
19 19
20 20

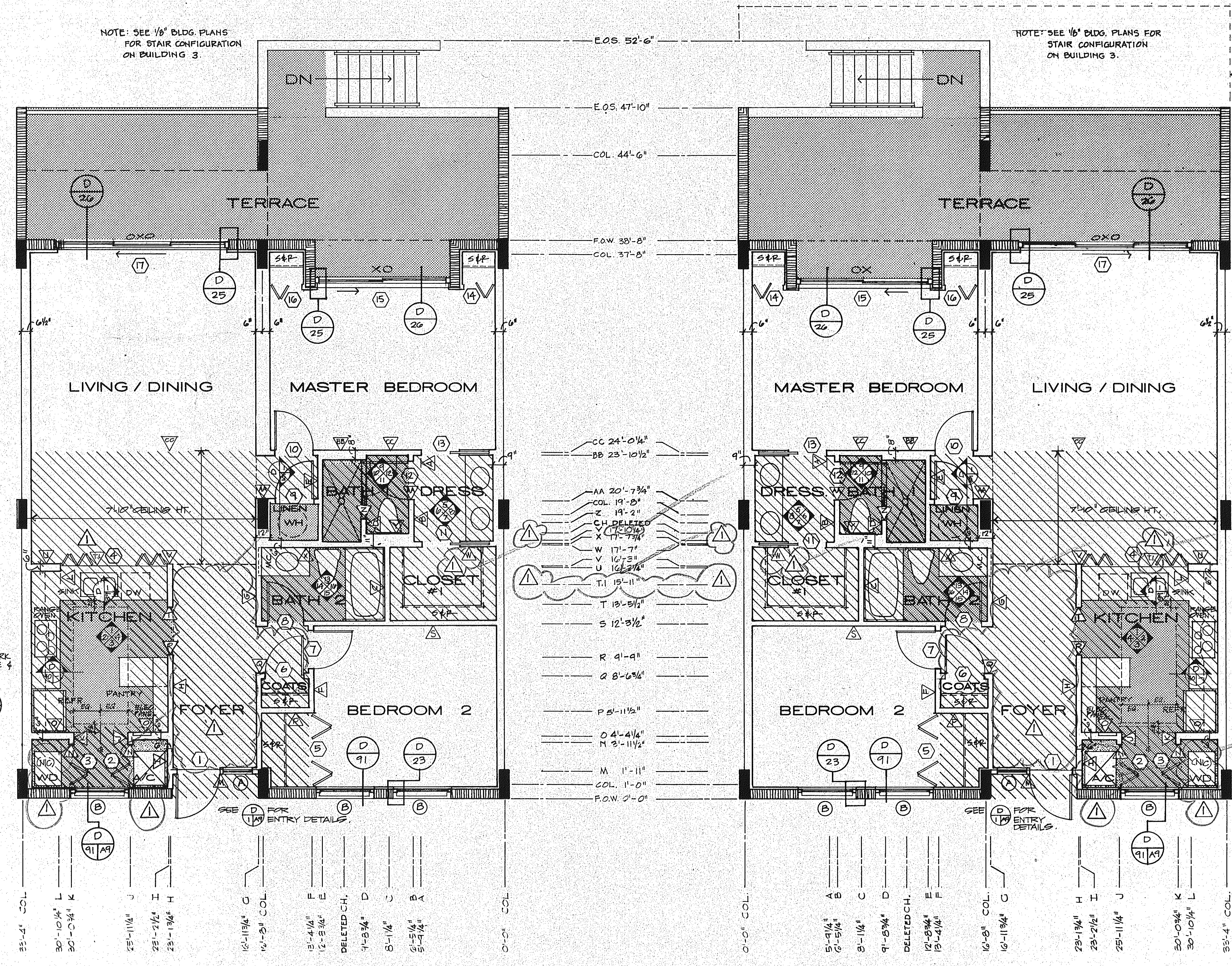
NOTE: SEE 1/8" BLDG. PLANS FOR STAIR CONFIGURATION ON BUILDING 3.

NOTE: SEE 1/8" BLDG. PLANS FOR STAIR CONFIGURATION ON BUILDING 3.

SEE BLDG. 3 1/8" PLANS FOR LOCATION OF UNIT 102.

SEE DETAILS AND MILLWORK SHOP DRWS. FOR SIZE & LOCATION OF KITCHEN CEILING LIGHTING.

SEE DETAILS AND MILLWORK SHOP DRWS. FOR SIZE & LOCATION OF KITCHEN CEILING LIGHTING.

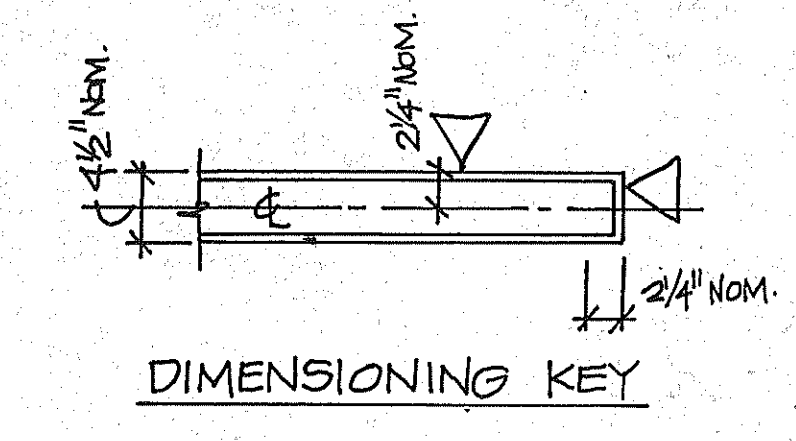


UNIT A+ LEFT

UNIT A+ RIGHT

NOTES

- SEE 1/8" BLDG. PLANS FOR COL. & SHEAR WALL LOCATIONS.
- ALL DROPPED CEILINGS ARE 7'-0" UNLESS OTHERWISE NOTED.
- ALL DIMENSIONS ARE FROM CENTERLINE OF WALL.
- SEE DETAIL BOOKLET FOR FLOOR, WINDOW & FINISH SCHEDULES.
- SCREEN DOT TEXTURE DENOTES PAVERS, CER. TILE, VINYL TILE & VAT. SEE FINISH SCHEDULES FOR EXACT LOCATIONS.
- VERIFY EXACT LOCATION OF LAVATORIES W/ ARCHITECT.



SUNSET BEACH
SUNLONG BOAT KEY
UNIT A+ PLANS 1/4" = 1'-0"
ISSUED 10 DEC. 82
REVISED 4-1-83
SHEET A-9 OF 37
ARVIDA CORPORATION · EDWARD J. SEIBERT AIA ARCHITECT & PLANNER PA · THE SWA GROUP · BRABHAM KUHN'S DEBAY CONSULTING ENGINEERS · OLSEN WHITE & ASSOCIATES STRUCTURAL ENGINEERS · BENNETT & BISHOP INC CONSULTING ENGINEERS & SURVEYORS