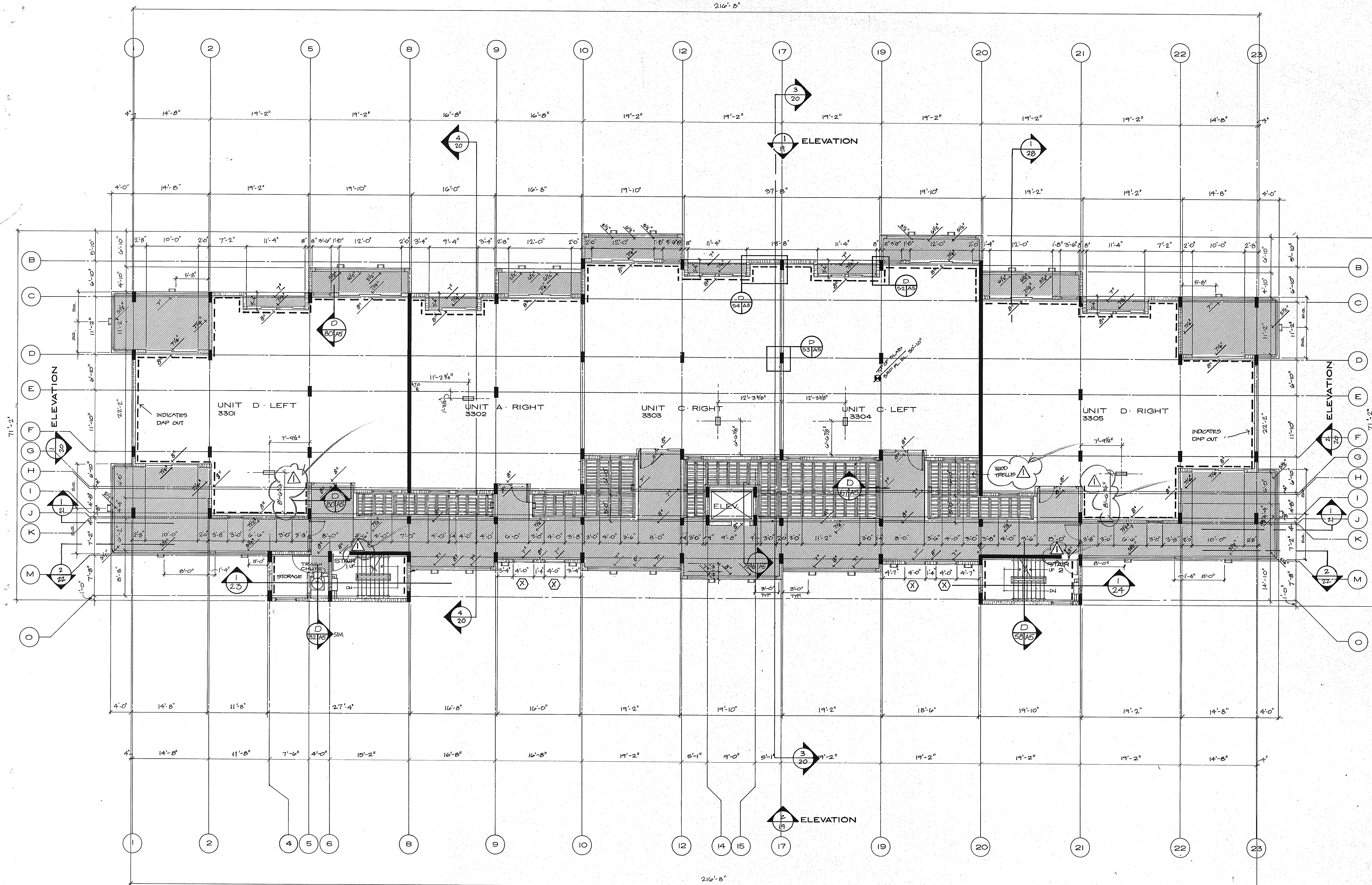


OVERLAYS
COMPOSITE

| | |
|----|----|
| 1 | 9 |
| 2 | 2 |
| 4 | 4 |
| 9 | 9 |
| 10 | 10 |



ARVADA CORPORATION · EDWARD J. SEBERT, AIA, ARCHITECT & PLANNER, P.A., THE SWA GROUP
BRABHAM, KUHNS, DEBAY CONSULTING ENGINEERS · OLSEN WHITE & ASSOCIATES, STRUCTURAL ENGINEERS · BENNETT & BISHOP, INC., CONSULTING ENGINEERS & SURVEYORS