

PITCH PAN DETAIL
n.t.s. b.k.d. M

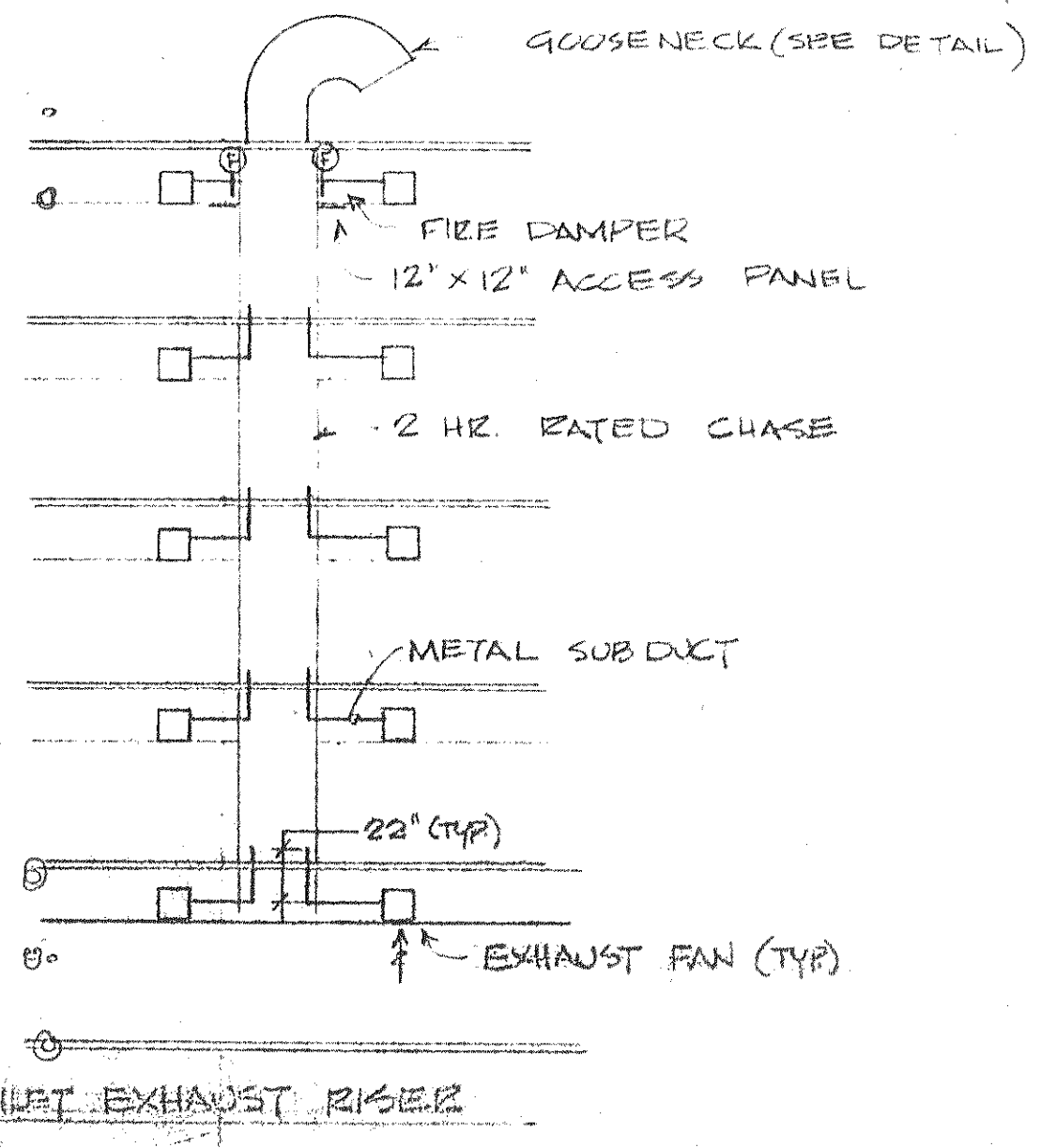
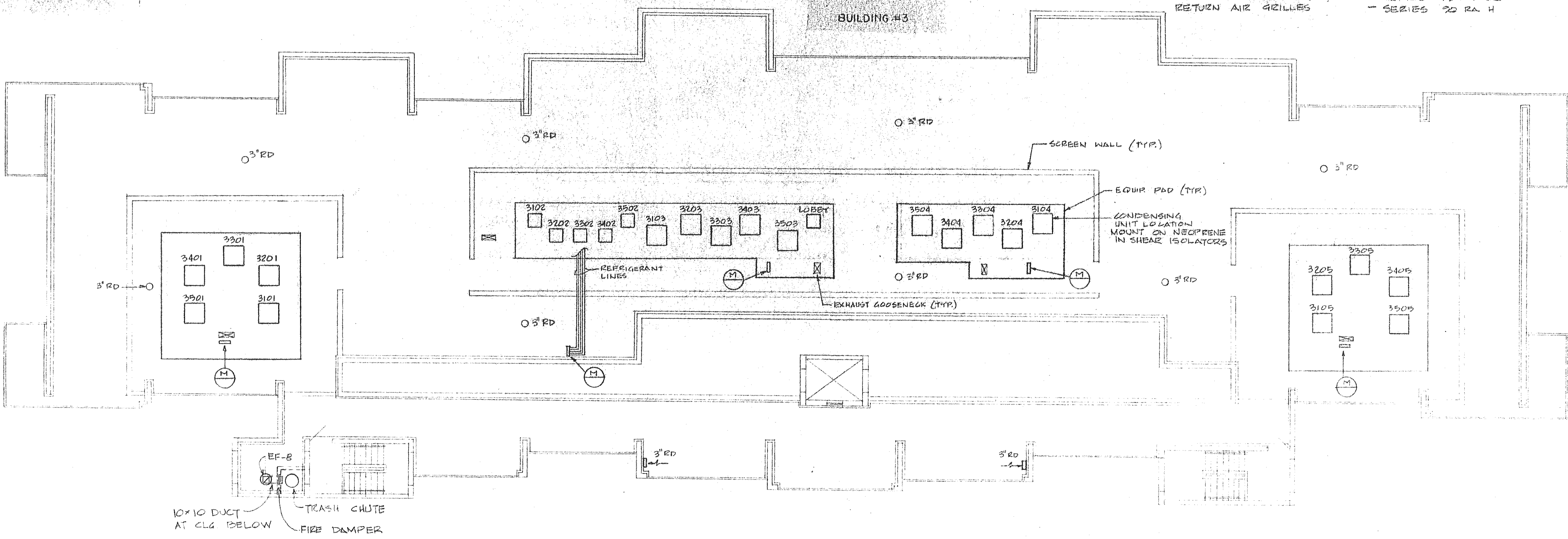
3501 D MOD DC-5 7/85 3/8L	3502 D DC-1 3/45 3/8L	3503 L MOD DC-3 3/45 3/8L	3504 L MOD DC-3 3/45 3/8L	3505 D MOD DC-5 7/85 3/8L	APT. NUMBER APT. TYPE DC UNIT NO. REF. LINES
3401 D DC-4 7/85 3/8L	3402 D DC-1 3/45 3/8L	3403 C DC-3 3/45 3/8L	3404 C DC-3 3/45 3/8L	3405 D DC-4 3/45 3/8L	
3301 D DC-4 7/85 1/2L	3302 D DC-1 3/45 3/8L	3303 C DC-3 7/85 3/8L	3304 C DC-3 3/45 3/8L	3305 D DC-4 7/85 1/2L	
3101 D+ DC-5 7/85 1/2L	3102 D+ DC-2 3/45 3/8L	3103 C+ DC-3 7/85 3/8L	3104 C+ DC-3 3/45 3/8L	3105 D+ DC-5 7/85 1/2L	

LOBBY REF. LINES 3/45 3/8L

UNIT NO.	LOCATION (APT. TYPE)	CFM	COOLING CAP. (RTON)		HEATING CAP. (RTON)	EER	AUX. HEAT (KW)	CONDENSING UNIT AIR HANDLER (G.E. OR EQUAL)
			TOTAL	SENSIBLE				
1	A	800	26,000	18,000	28,000	B.0	3.9	BWR 924/BWV 924
2	AT, AT/PFL B	1000	31,500	23,000	33,000	B.4	4.8	BWR 950/BWV 950
3	BT, BT/PFL C, C/TIC, M20	1200	35,000	26,000	39,000	B.2	4.8	BWR 936/BWV 936
4	D	1600	40,000	34,000	51,000	B.0	8.5	BWR 948/BWE 948
5	D+, D MOD	2000	50,000	39,000	51,000	B.0	8.5	BWR 948/BWE 948
6	LOBBY	650	11,000	15,000	16,900	F.1	5.0	TORK H11012/100/ K12015

- (A) CAPACITY BASED ON 80°F DB; 67°F WB ENT. EVAP; 95° CONDENSING AIR
- (B) RATED CAPACITY AT 240V
- (C) ELECTRIC SERVICE 208V, 1Ø, 80CY
- (D) CAPACITY AT 70°F INDOOR; 47°F OUTDOOR

NOTES: AIR DISTRIBUTION DEVICES SHALL BE "LIMA" OR EQUAL SUPPLY AIR REGISTERS (SAR) - SERIES 90 VH CB CEILING DIFFUSERS (CD) - SERIES 95 FM CB RETURN AIR GRILLES - SERIES 90 RA H



BUILDING 3 - ROOF PLAN AIR CONDITIONING
scale 1/8" = 1'-0"

FAN NO.	MAKE OR EQUIV.	USE	CFM	SP. IN. H ₂ O	RPM	HP	ELECTRIC
EF-1	GREENHECK CSP-8	EXHAUST	31	.250	1450	1/10	120-160
EF-2	GREENHECK CSP-15	EXHAUST	72	.125	1000	1/150	120-160
EF-3	GREENHECK CSP-17	EXHAUST	141	.125	1550	1/50	120-160
EF-4	GREENHECK CSP-50	EXHAUST	358	.125	1050	1/15	120-160
EF-5	GREENHECK SPC-36	EXHAUST	9640	.125	435	1/2	120-160
EF-6	GREENHECK SPC-36	EXHAUST	7600	.125	435	1/3	120-160
EF-7	GREENHECK SPP-23-3-10	EXHAUST	450	.250	860	1/12	120-160
EF-8	GREENHECK G-65-E	EXHAUST	110	.125	1050	1/80	120-160
EF-9	GREENHECK SPC-24-D	EXHAUST	117	.125	1550	1/80	120-160

SUNSET BEACH
 SUNSET BEACH KEY
 ARVIDA CORPORATION · EDWARD J. SEIBERT AIA ARCHITECT & PLANNER P.A. THE S.W. GROUP
 BRADHAM KUHNS DEBAY CONSULTING ENGINEERS · OLSEN WHITE & ASSOCIATES STRUCTURAL ENGINEERS · BENNETT & BISHOP INC. CONSULTING ENGINEERS & SURVEYORS
 ISSUED 4/1/00
 REVISED
 SHEET 3 OF 3