

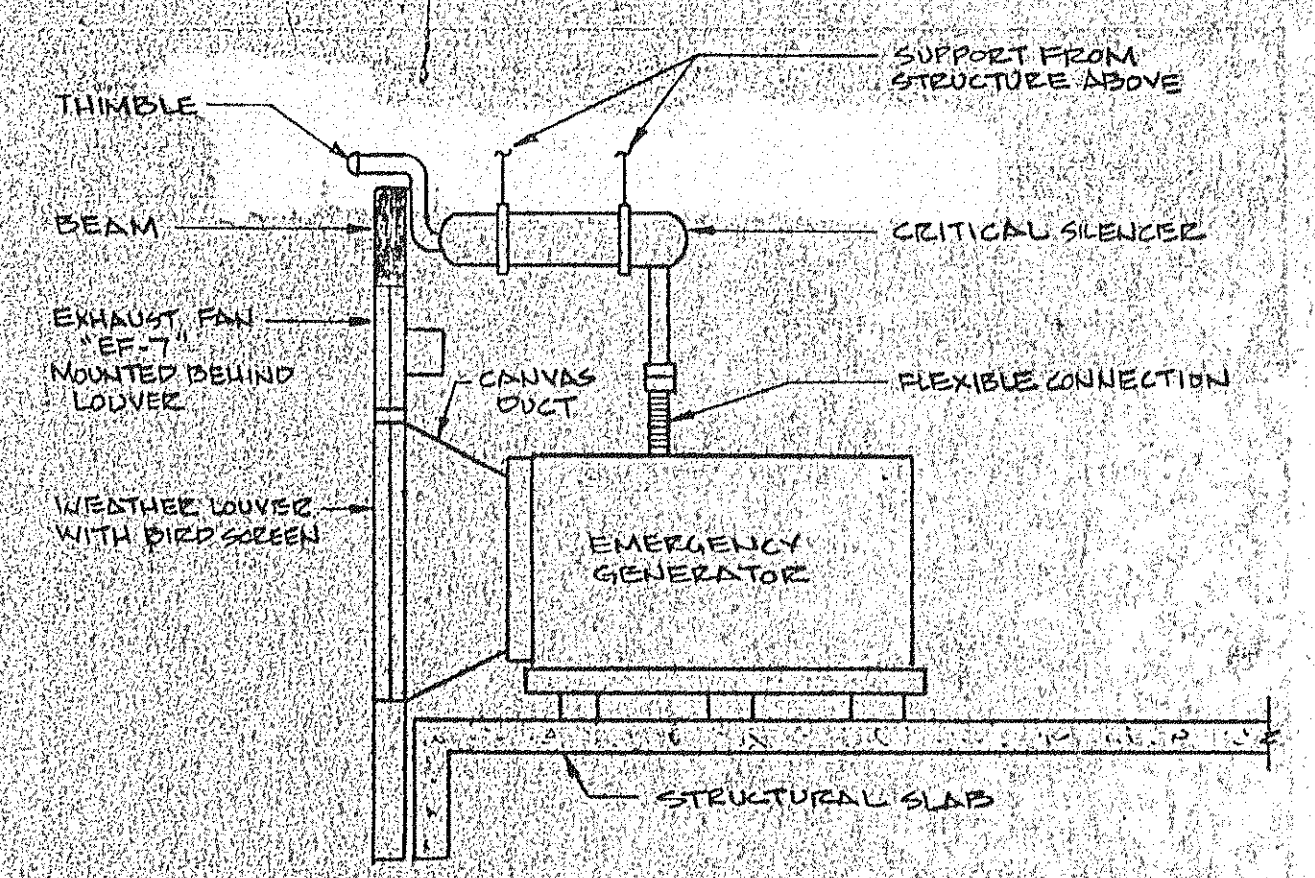
BOOSTER PUMP DETAIL

n.t.s.

PUMP DATA (EACH PUMP)

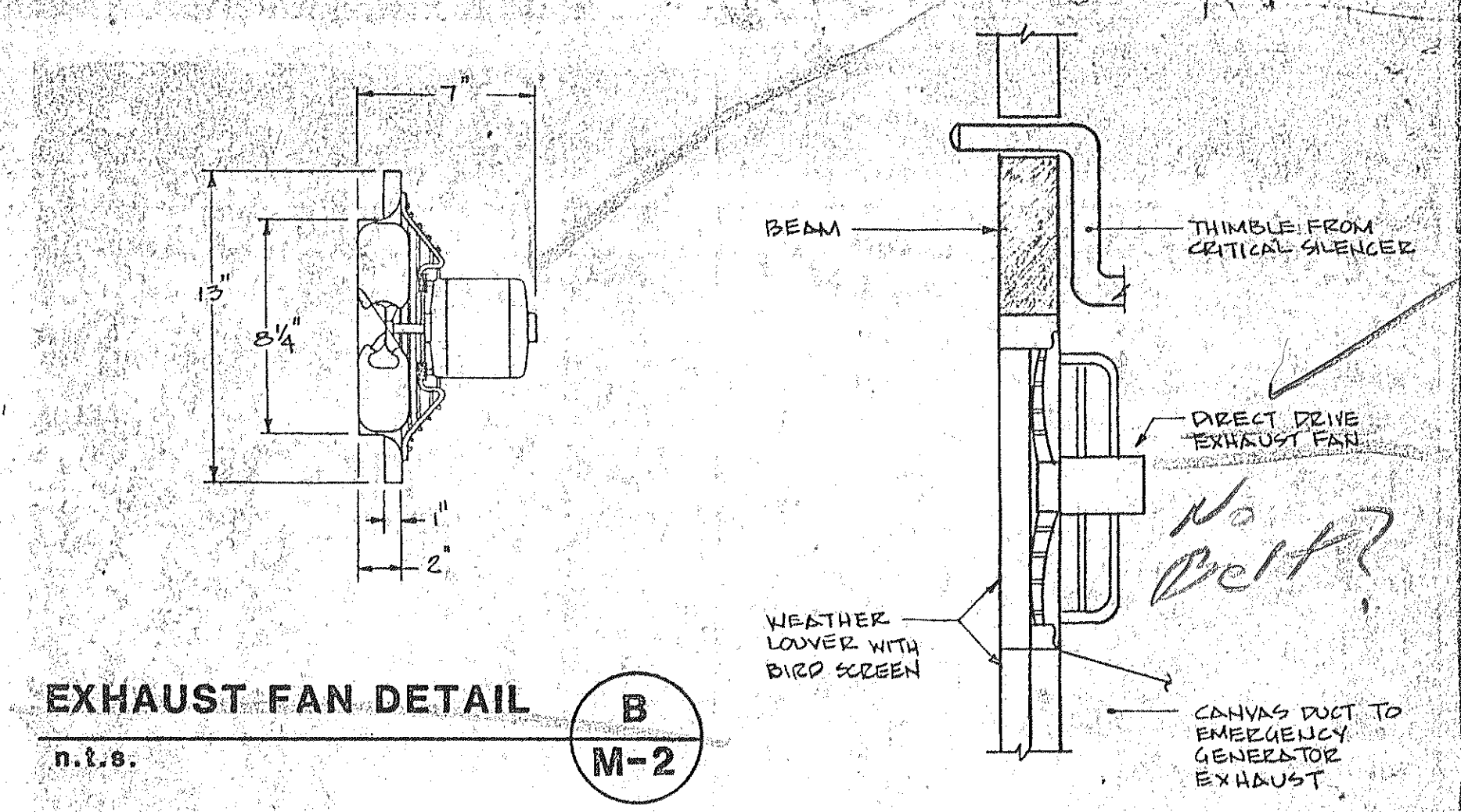
110 GPM AT 125' TDH, 3500 RPM, 10 HP
 208 V, 3 PH, 60 CYCLE
 ALLIS CHALMERS 2000 SERIES, 1/2" C, 365
 BRONZE FITTED, DEEP PROOF MOTOR,
 MECHANICAL SHAFT SEALS.
 CONTROLLER SHALL BE ADJUSTABLE FREQUENCY
 VARIABLE SPEED TYPE FOR DUPLEX PUMP OPERATION
 PRESSURE SIGNAL SHALL BE SENT FROM TOP FLOOR
 TO CONTROLLER. PUMP START STOP PRESSURE SETTINGS
 SHALL BE ADJUSTABLE W/LEAD LAG OPERATION &
 ALTERNATOR SWITCH. PUMPS SHALL HAVE LOW SUCTON
 CUT-OFF W/ALARM LIGHTS AND RUN LIGHTS.

NOTE:
 PUMPS TO BE ON CONCRETE INERTIA PAD WITH SPRING ISOLATORS
 SIZED FOR ONE INCH STATIC DEFECTION.



SECTION A-A

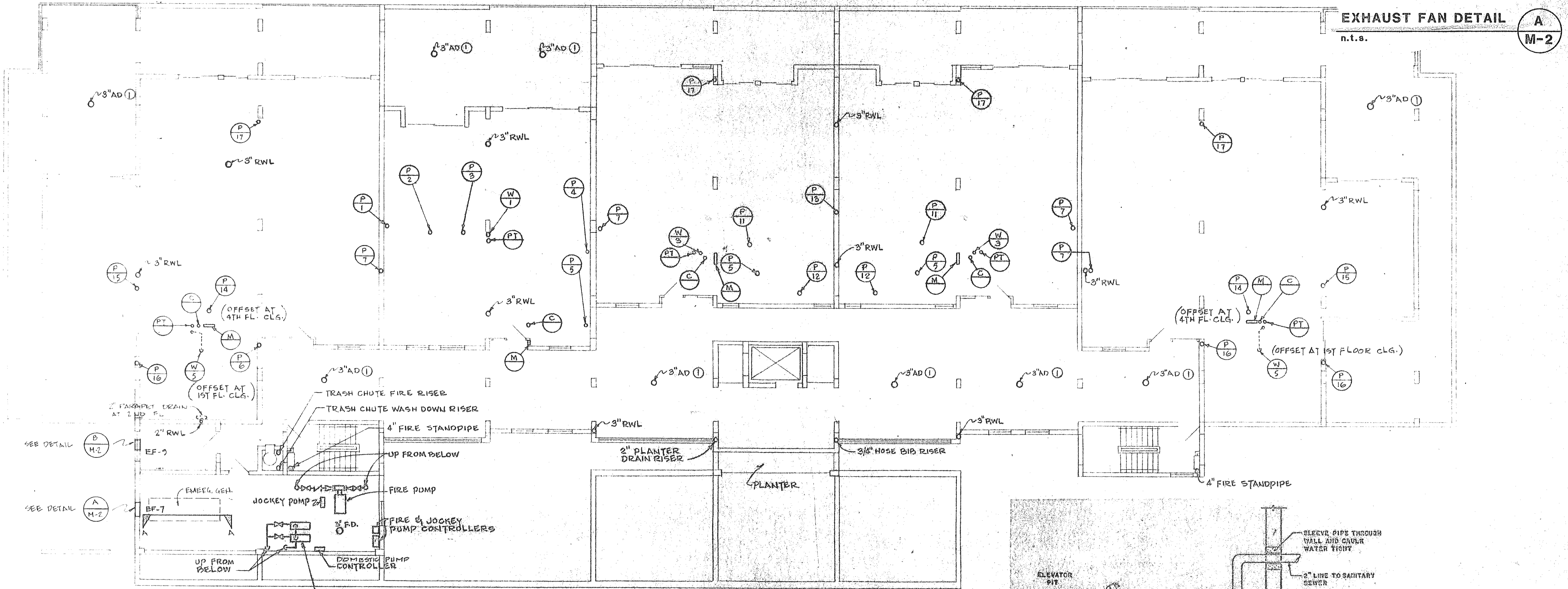
n.t.s.



EXHAUST FAN DETAIL B

n.t.s.

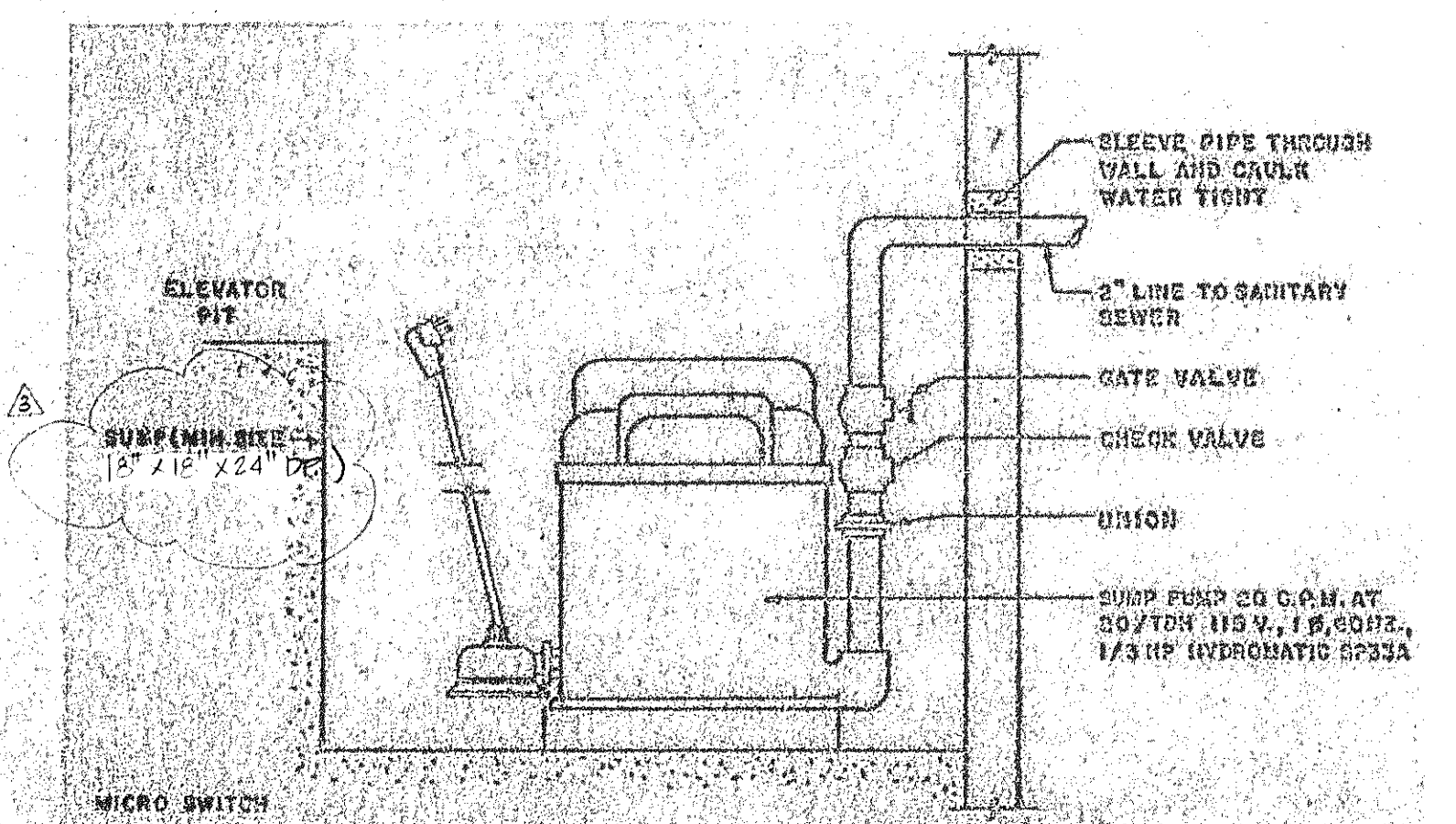
M-2



BUILDING 3 - TYPICAL (FIRST FLOOR) MECHANICAL PLAN

scale 1/8" = 1'-0"

- NOTES:**
- AREA DRAINS AT FIRST FLOOR ONLY
 - ONE APARTMENT UNIT OF EACH TYPE SHALL HAVE ALL TRADES ROUGHED IN FOR ENGINEER'S AND ARCHITECT'S APPROVAL AND TRADE COORDINATION PRIOR TO PROCEEDING INTO OTHER UNITS. LOCATION OF DIFFUSERS, SPRINKLER HEADS AND LIGHTING SHALL BE COORDINATED SO THAT THEY ARE LOCATED ON A SINGLE AXIS OF A ROOM.



SUMP PUMP DETAIL

n.t.s.

DESIGNED BY	
CHECKED BY	
DATE	
PROJECT NO.	
SCALE	
REVISIONS	
NO.	DATE
1	
2	
3	
4	
5	
6	
7	
8	
9	
10	

M-2
 BLOC 3