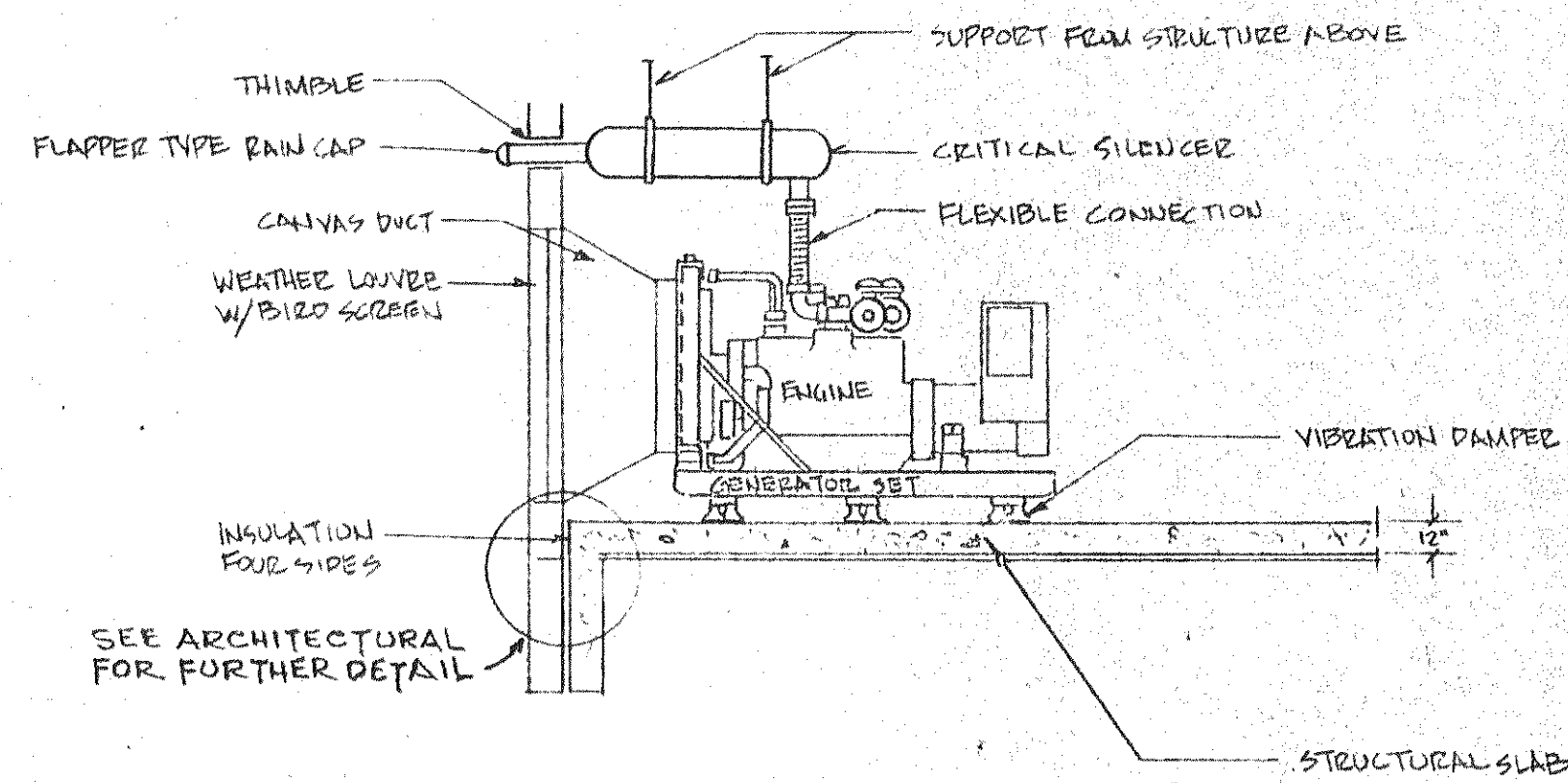
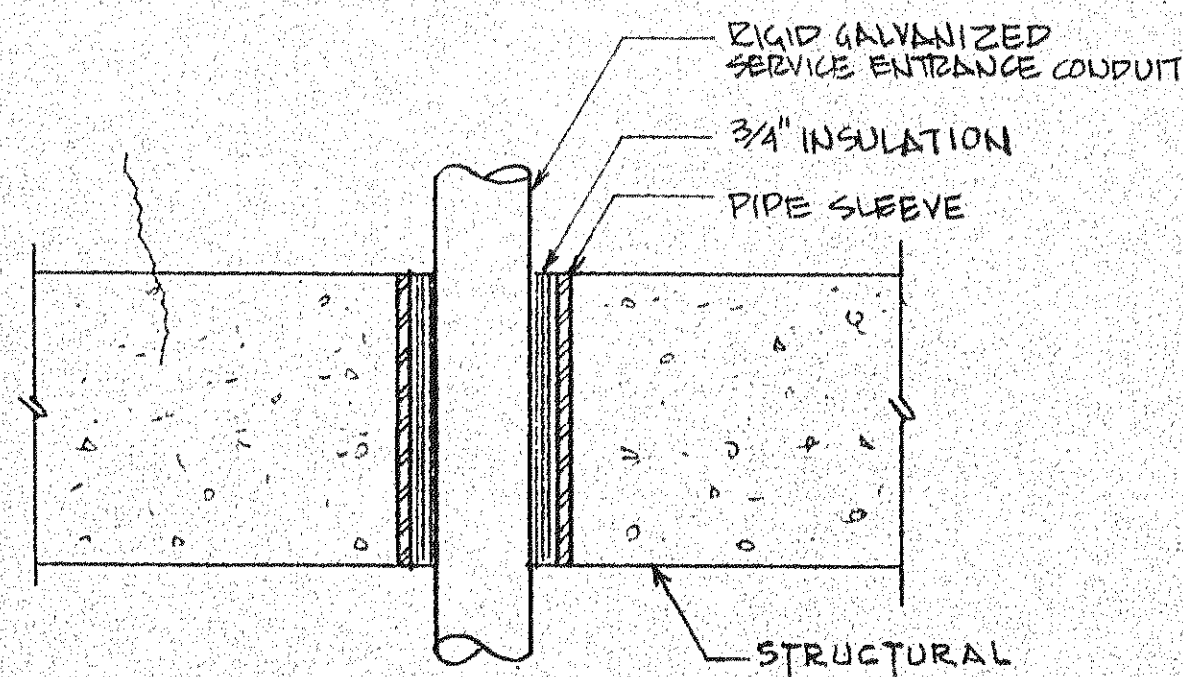


# FIXTURE SCHEDULE

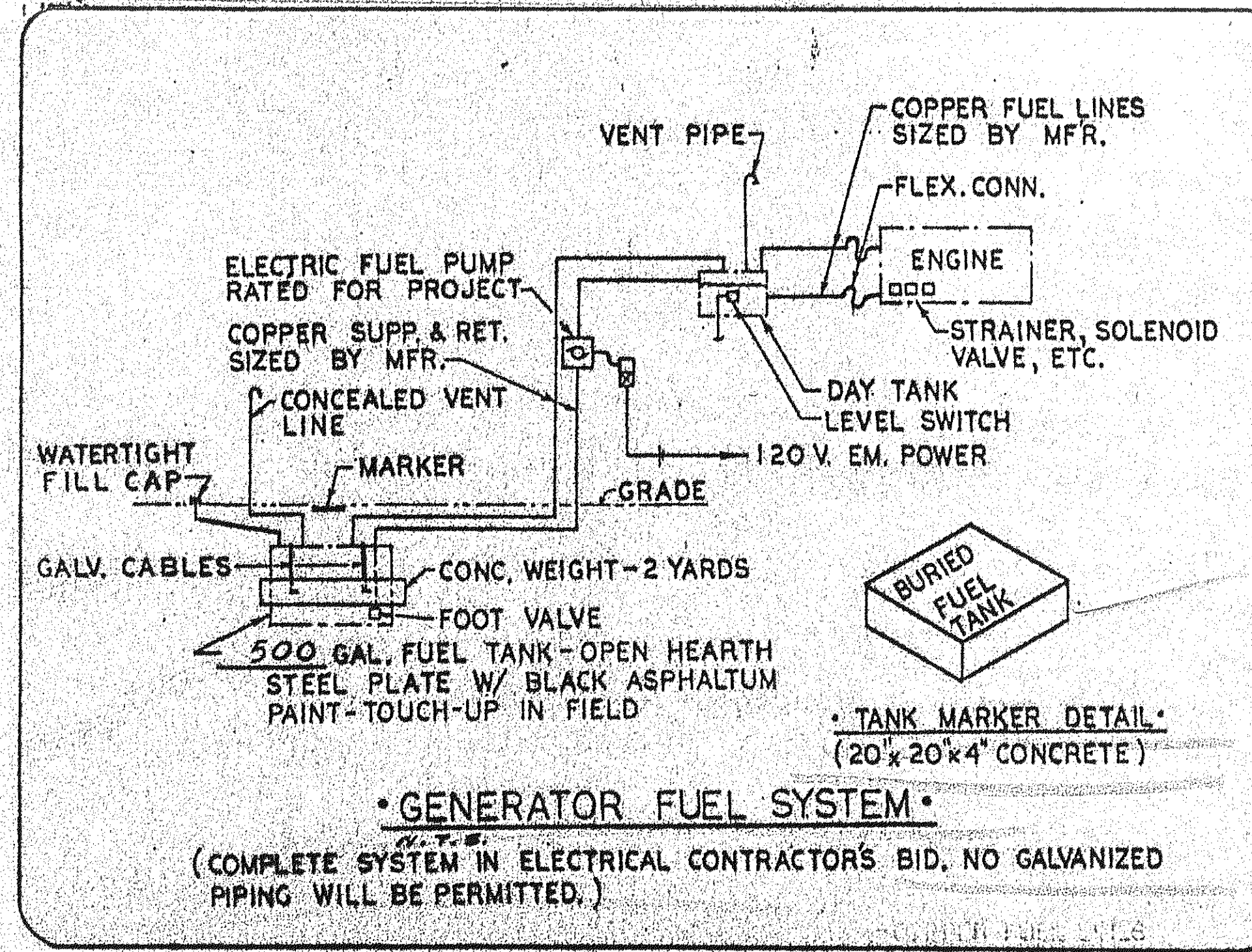
TYPE	MANUFACTURER	CATALOG NO.	LAMPS	VOLTS	MOUNTING	REMARKS
A	PRESCOLITE LIGHTOLIER	9342 STD. 1803	1-75W 40	120	SURFACE	
B	PRESCOLITE LIGHTOLIER	9346 STD. 1833	1-75W 40	120	WALL BRACKET	
C	LITHONIA KEYSTONE	4TDD 240 A LU 240 WLL E	2-F40	120	SURFACE	
D	LIGHTOLIER PROGRESS	1355B P7199 LE 120V	2-F40	120	SURFACE	
E	PRESCOLITE LIGHTOLIER	21K-S-5 1102-1107	1-150W 40	120	RECESSED	
N	PRESCOLITE LIGHTOLIER	21K-S-2 1102-PI-1171	1-75W 40	120	RECESSED	
F	ALICO PROGRESS	215-RSW P7010-120V NPF	2-T5 13W	120	UNDER CABINET	
F1	ALICO PROGRESS	108-SW P7000-120V NPF	1-T5 8W	120	UNDER CABINET	
G	LIGHTOLIER	1101/1121	1-75W 40	120	RECESSED	
H	LITHONIA KEYSTONE	81C 240 C240-LE-120V	4-F40	120	SURFACE	NOTE SOME 36" LAMP SEE PLANS
I	PRESCOLITE LIGHTOLIER	82D HF-1 1102-PI-1177	2-100W 40	120	RECESSED	
K	RED DOT	VW6-01-C	1-100W 40	120	WALL BRACKET	
L	LITHONIA SIMKAR	81SC 240 A 1F240-LG	4-F40	120	SURFACE	
X	DUAL LITE LIGHTALARMS	X-2100 OR X-2121 OXA 120V	2-20T6 1/2	120	SURFACE-WALL	
M	KIM HUBBELL	4010N 309-15	1-150W	120	BRACKET	DIMMED TO 50% VOLTAGE



SECTION A-A



DETAIL OF SERVICE ENTRANCE CONDUIT THROUGH INERTIA MAT

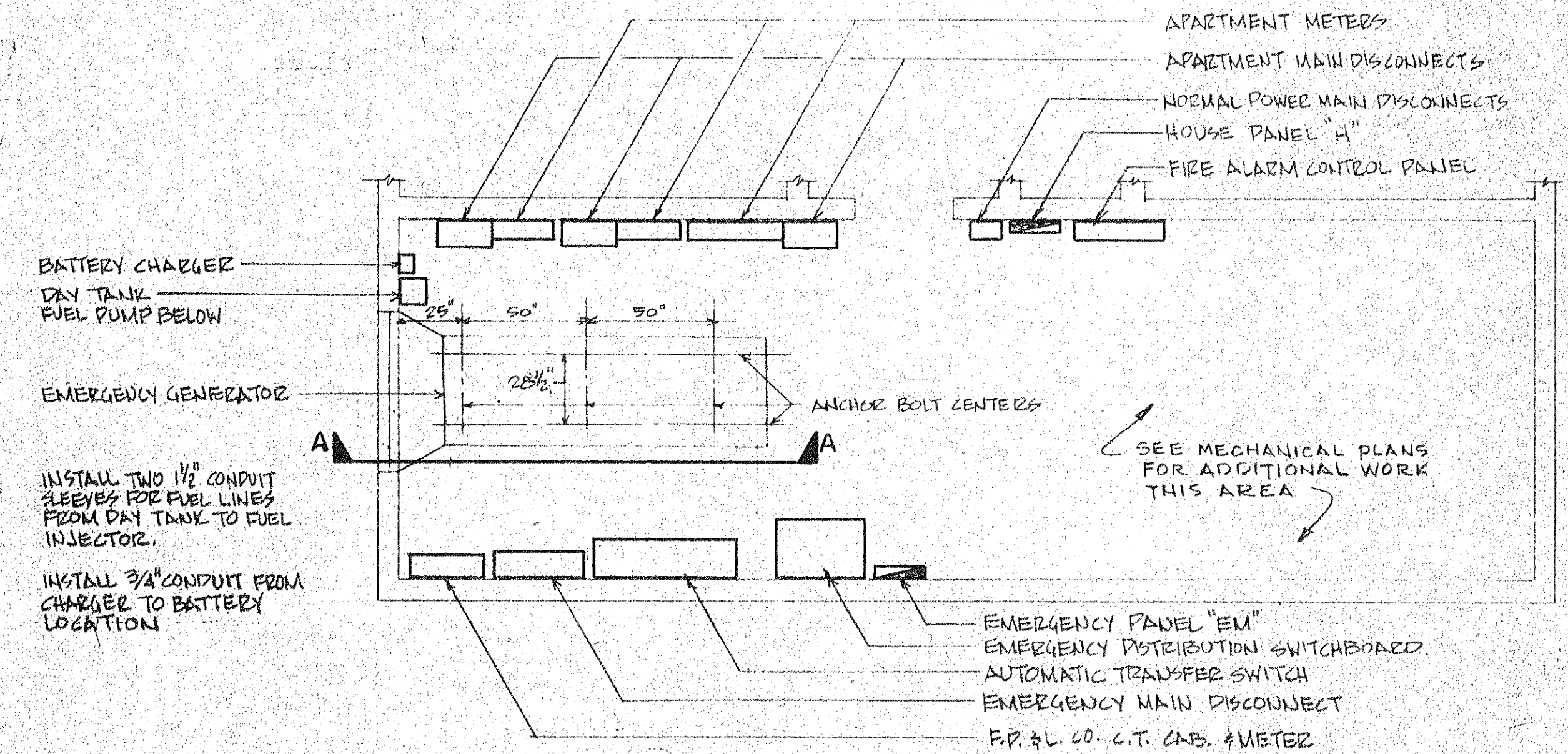


NOTE: (COMPLETE SYSTEM IN ELECTRICAL CONTRACTOR'S BID. NO GALVANIZED PIPING WILL BE PERMITTED.)

# ELECTRICAL LEGEND

NOTE: THESE SYMBOLS ARE PRINTED AND SHOULD BE REPRODUCED EXACTLY AS SHOWN.

[Symbol]	FLOUORESCENT FIXTURE - CROSS HATCH INDICATES EMERGENCY CIRCUIT (PROVIDE FLOUORESCENT BATTERY INVERTER ON ONE LAMP OF EACH EMERGENCY FIXTURE)
[Symbol]	FLOUORESCENT FIXTURE - CENTER LAMP ON EMERGENCY CIRCUIT (PROVIDE FLOUORESCENT BATTERY INVERTER ON CENTER LAMP OF EACH FIXTURE)
[Symbol]	FLOUORESCENT FIXTURE - SINGLE LAMP CHANNEL
[Symbol]	INCANDESCENT OR HID FIXTURE - CROSS HATCH INDICATES EMERGENCY CIRCUIT
[Symbol]	EXIT SIGN FIXTURE - DIRECTION ARROWS AS INDICATED
[Symbol]	LIGHT FIXTURE TYPE DESIGNATION - SEE SCHEDULE
[Symbol]	TOSSEL SWITCH - 8PST, UP 90° OR AS NOTED
[Symbol]	TOSSEL SWITCH - 4PST, UP 44° OR AS NOTED
[Symbol]	TOSSEL SWITCH - 3 WAY, UP 90° OR AS NOTED
[Symbol]	TOSSEL SWITCH - 4 WAY, UP 44° OR AS NOTED
[Symbol]	TOSSEL SWITCH - W/RED PILOT LIGHT INDICATING SWITCH "ON" - UP 44°
[Symbol]	TOSSEL SWITCH - MANUAL MOTOR RATED WITH THERMAL O.L.
[Symbol]	TOSSEL SWITCH - SPST, KEY OPERATED
[Symbol]	TOSSEL SWITCH - W/DIMMER CONTROL - UP 44° OR AS NOTED
[Symbol]	SINGLE RECEPTACLE - 120 V. - UP 18" OR AS NOTED
[Symbol]	SINGLE RECEPTACLE - 120 V. - UP 12" OR AS NOTED - DEDICATED
[Symbol]	DUPLEX RECEPTACLE - 120 V. - UP 12" OR AS NOTED
[Symbol]	DUPLEX RECEPTACLE - 120 V. - TOP HALF SWITCHED - UP 12" OR AS NOTED
[Symbol]	SPECIAL PURPOSE OUTLET - NEMA TYPE SHOWN (MATCH EQUIPMENT TO BE SERVED)
[Symbol]	FLOOR OUTLET - FLUSH W/SINGLE RECEPTACLE 15A, 120V.
[Symbol]	FLOOR OUTLET - SURFACE W/DUPLEX RECEPTACLE 15A, 120V.
[Symbol]	CLOCK HANDED RECEPTACLE - UP 90° OR AS NOTED
[Symbol]	THERMOSTAT OUTLET - DEVICE FURNISHED BY MECHANICAL CONTRACTOR
[Symbol]	TELEVISION ANTENNA SYSTEM WALL OUTLET - UP 18" OR AS NOTED
[Symbol]	TELEPHONE WALL OR FLOOR OUTLET - WALL OUTLET UP 18" OR AS NOTED
[Symbol]	SAFETY SWITCH (30 POLES, 150 FRAME SIZE, 150J SIZE, 150F) NON-FUSED
[Symbol]	MAGNETIC MOTOR STARTER OR CONTACTOR - (2) NEMA SIZE
[Symbol]	ELECTRIC MOTOR - SIZE AS SHOWN
[Symbol]	PUSHBUTTON SWITCH (2)
[Symbol]	ELECTRIC LIGHTING AND/OR APPLIANCE PANELBOARD
[Symbol]	ELECTRIC EQUIPMENT - DESIGNATED AS SHOWN
[Symbol]	CONDUIT RUN CONCEALED IN FLOOR, WALL OR CEILING
[Symbol]	CONDUIT RUN CONCEALED IN FLOOR OR UNDERGROUND
[Symbol]	CONDUIT RUN EXPOSED PARALLEL TO BUILDING LINE
[Symbol]	NUMBER TO PANEL LINE INDICATE NO. OF CIRCUIT CONDUCTORS
[Symbol]	W.P. INDICATES WEATHER PROOF ENCLOSURE OR COVER AS REQUIRED
[Symbol]	G.F.I. DENOTES GROUND FAULT INTERRUPTER
[Symbol]	PHOTO ELECTRIC CELL
[Symbol]	PULL CHAIN
[Symbol]	TIME CLOCK
[Symbol]	JUNCTION BOX
[Symbol]	CEILING JUNCTION BOX
[Symbol]	ELECTRIC STRIP HEATER
[Symbol]	DOOR CHIME (C) DOOR BELL (B)



PUMP - ELECTRICAL ROOM PLAN

scale 1/4" = 1'-0"

SUNSET BEACH BOAT KEY  
 ARCHITECTURE  
 EDWARD J. SEBERT, AIA, ARCHITECT & PLANNER IN CHARGE  
 BRADY KURNS, DEBAY CONSULTING ENGINEERS  
 OLSEN WHITE & ASSOCIATES, STRUCTURAL ENGINEERS  
 BENNETT & BISHOP, INC. CONSULTING ENGINEERS & SURVEYORS  
 ISSUED: 4-1-23  
 REVISED:  
 SHEET E-19  
 BLDG. 2 OF