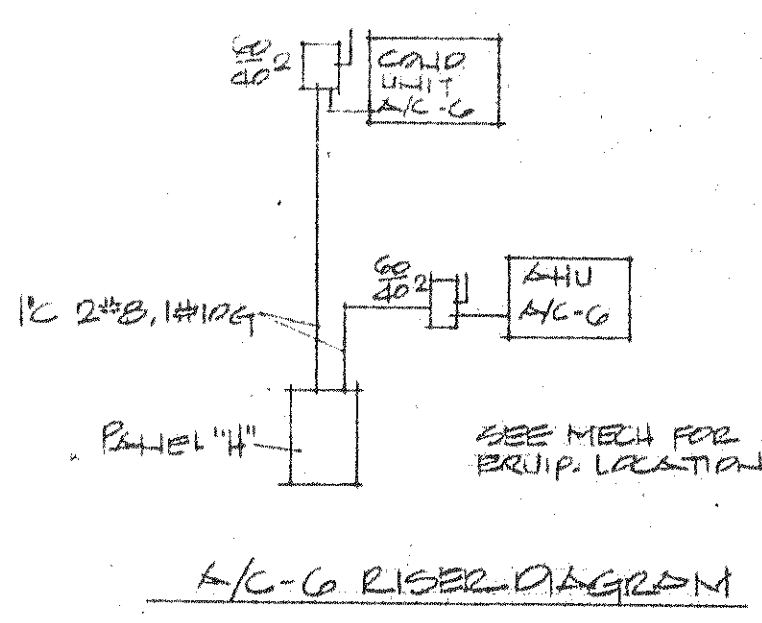
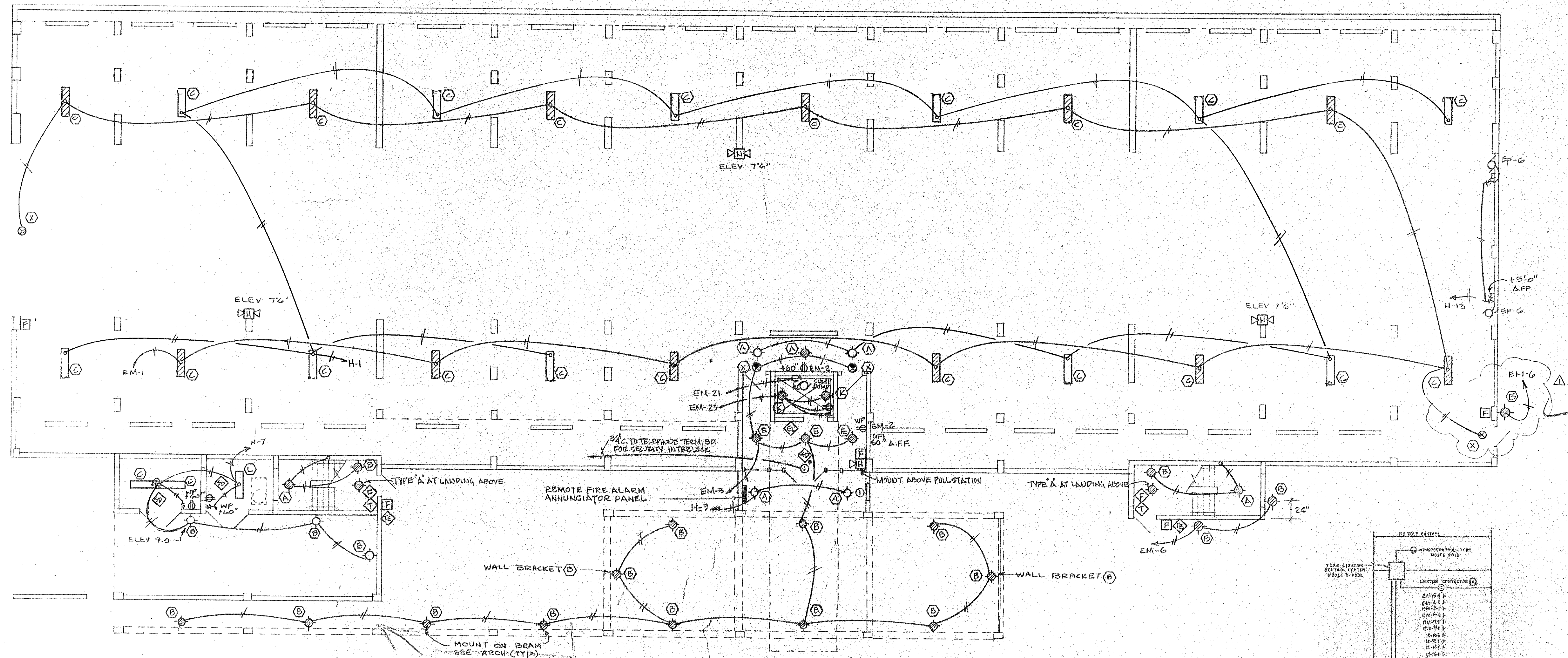


- 1 - LOBBY FINISHED FLOOR
ACTUAL ELEVATION - 7.7 MSL
- 2 - ASSUMED ELEVATION OF LOBBY 0.0
- 3 - ALL ELEVATIONS INDICATED ARE
RELATED TO ASSUMED ELEV. 0.0
UNLESS OTHERWISE INDICATED.



BUILDING 3 - GROUND FLOOR ELECTRICAL PLAN

Scale 1/8" = 1'-0"

- ① TELEPHONE ENTRY SYSTEM - PEDESTAL MOUNTED TYPE TRIGON 600 SERIES. PROVIDE 1" CONDUIT TO TELEPHONE TERMINAL BOARD.
- ⚠ ② ALL LIGHT SWITCHES TO BE MOUNTED 48" ABOVE FIN. FLOOR.
- ⚠ ③ ALL RECEPTACLES TO BE MOUNTED WITH CENTER LINE 18" ABOVE FIN. FLR.

