

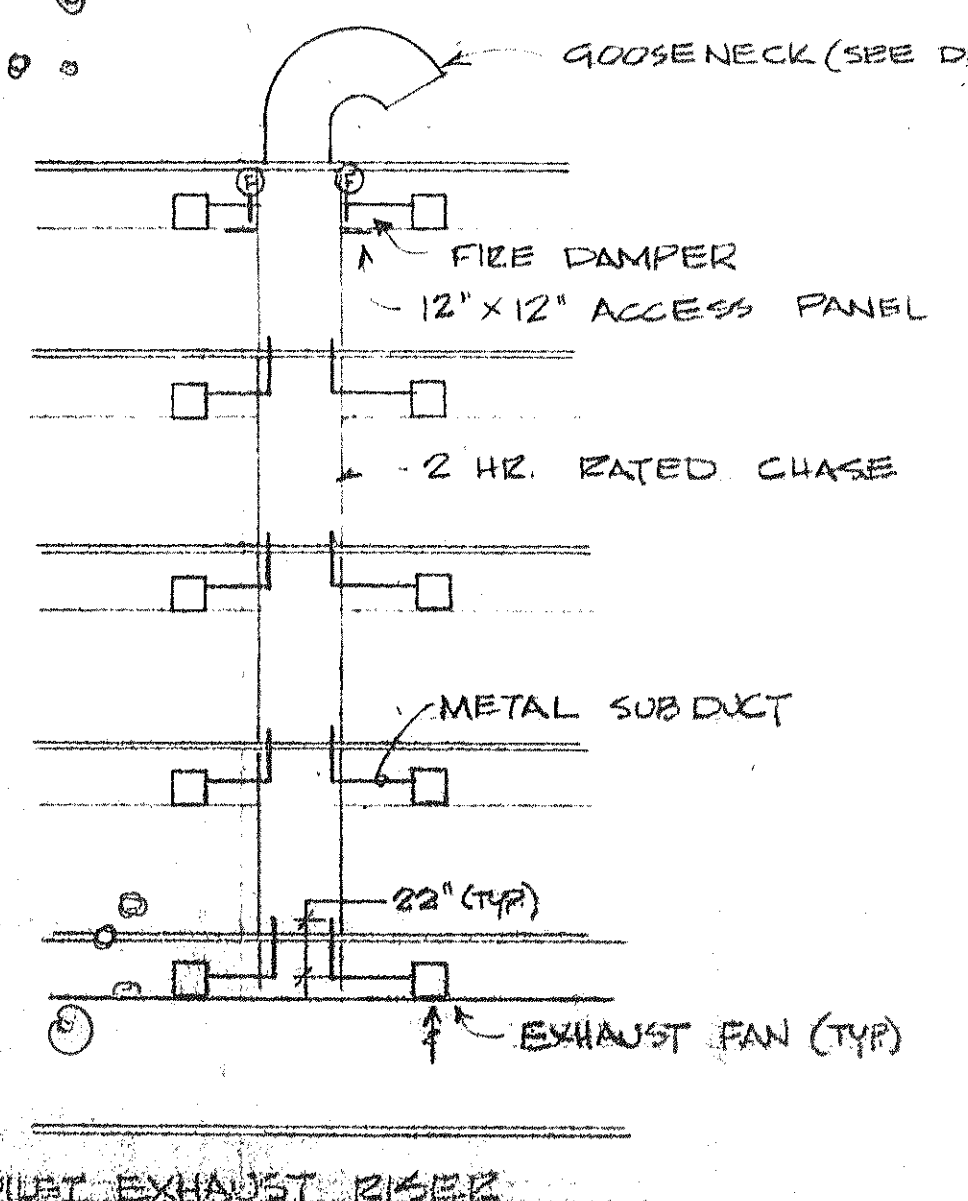
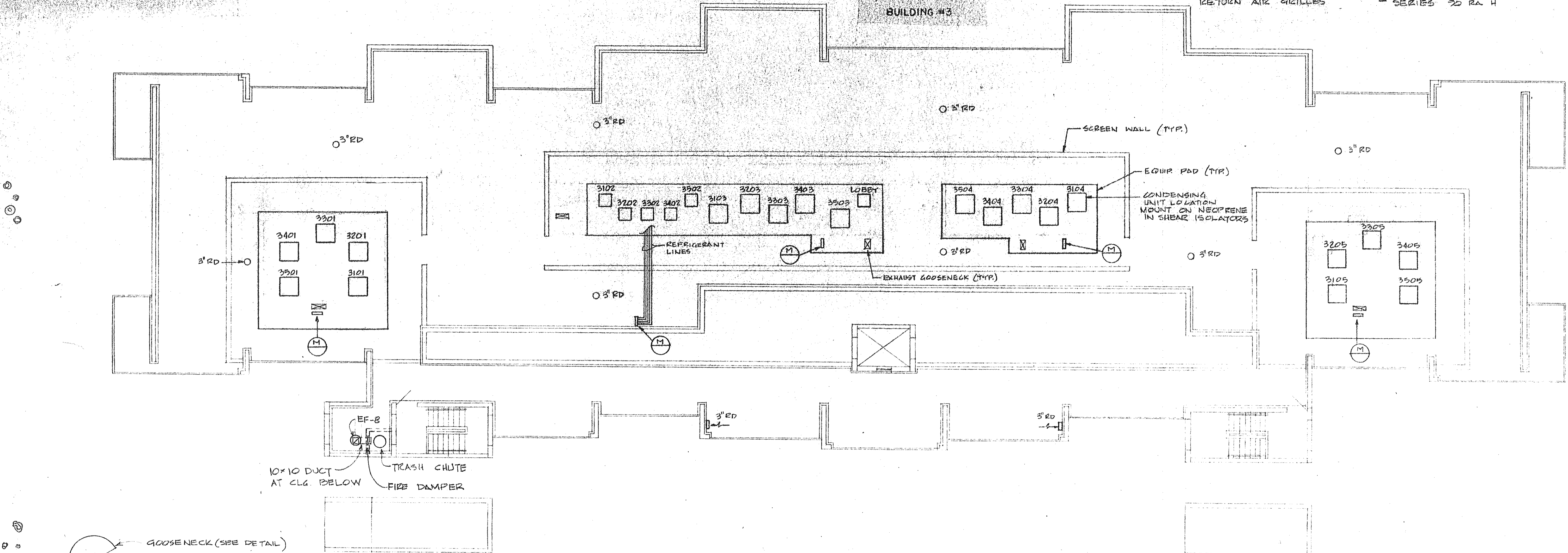
3501 D MOD DC 5 7/85 3/8L	3502 D DC 1 3/45 3/8L	3503 C MOD DC 3 3/45 3/8L	3504 C MOD DC 2 3/45 3/8L	3505 D MOD DC 5 7/85 3/8L	SPT. NUMBER SPT. TYPE DC UNIT NO. REF. LINES
3401 D DC 4 7/85 3/8L	3402 D DC 1 3/45 3/8L	3403 C DC 3 3/45 3/8L	3404 C DC 3 3/45 3/8L	3405 D DC 4 3/45 3/8L	
3301 D DC 4 7/85 1/2L	3302 D DC 1 3/45 3/8L	3303 C DC 3 3/45 3/8L	3304 C DC 3 3/45 3/8L	3305 D DC 4 7/85 1/2L	
3201 D DC 4 7/85 1/2L	3202 D DC 1 3/45 3/8L	3203 C DC 3 7/85 3/8L	3204 C DC 3 3/45 3/8L	3205 D DC 4 7/85 1/2L	
3101 D+ DC 5 1/85 1/2L	3102 D+ DC 2 3/45 3/8L	3103 C+ DC 3 7/85 3/8L	3104 C+ DC 3 3/45 3/8L	3105 D+ DC 5 1/85 1/2L	

LOBBY REF. LINES: 3/45 3/8L

UNIT NO.	LOCATION (APT. TYPE)	CFM	COOLING CAPACITY (TONS)	HEATING CAPACITY (TONS)	EER	AUX. HEAT (KW)	CONDENSING UNIT AIR HANDLER (Q-# OR EQUAL)
1	A	800	20,000	18,000	8.0	3.9	BWR 924/BWV 924
2	A+1/TYPICAL B	1000	31,500	23,000	8.4	4.8	BWR 930/BWV 930
3	B/TYPICAL C	1,200	35,000	26,000	8.2	4.8	BWR 936/BWV 936
4	D	1,600	40,000	31,000	8.0	8.5	BWR 948/BWE 948
5	D+1/D MOD	2,000	50,000	39,000	8.0	8.5	BWR 948/BWE 948
6	LOBBY	650	17,000	15,000	7.1	5.0	TARK HILL/GEAR/404/HIGB015

(A) CAPACITY BASED ON 80°F DB; 67°F WB ENT. EVAP; 95° CONDENSING AIR  
 (B) RATED CAPACITY AT 240V  
 (C) ELECTRIC SERVICE = 208V, 1Ø, 60 CY  
 (D) CAPACITY AT 70°F INDOOR, 47°F OUTDOOR

NOTES: AIR DISTRIBUTION DEVICES SHALL BE "LIMA" 2½ EQUAL SUPPLY AIR REGISTERS (SAR) - SERIES 90 VH OR CEILING DIFFUSERS (CD) - SERIES 95 FM OR RETURN AIR GRILLES - SERIES 90 RA H



**BUILDING 3 - ROOF PLAN AIR CONDITIONING**  
 scale 1/8" = 1'-0"

FAN NO.	MAKE OR EQUAL	USE	CFM	SP IN H2O	RPM	HP	ELECTRIC
EF-1	GREENHECK CSP-8	EXHAUST	31	.250	1550	1/100	120-1-60
EF-2	GREENHECK CSP-15	EXHAUST	72	.125	1000	1/150	120-1-60
EF-3	GREENHECK CSP-17	EXHAUST	141	.125	1550	1/150	120-1-60
EF-4	GREENHECK CSP-50	EXHAUST	358	.125	1050	1/15	120-1-60
EF-5	GREENHECK SPC-36	EXHAUST	9640	.125	495	1/2	120-1-60
EF-6	GREENHECK SPC-30	EXHAUST	7660	.125	435	1/3	120-1-60
EF-7	GREENHECK SDR-24-3-10	EXHAUST	450	.250	860	1/12	120-1-60
EF-8	GREENHECK G-65-E	EXHAUST	110	.125	1050	1/80	120-1-60
EF-9	GREENHECK SGE-24-D	EXHAUST	117	.125	1550	1/80	120-1-60

SUNSET BEACH BOAT KEY  
 ARVIDA CORPORATION · EDWARD J SEIBERT AIA ARCHITECT & PLANNER PA · THE SWA GROUP  
 BRABHAM KUHN DEBAY CONSULTING ENGINEERS · OLSEN WHITE & ASSOCIATES STRUCTURAL ENGINEERS · BENNETT & BISHOP INC CONSULTING ENGINEERS & SURVEYORS  
 ISSUED 4-1-93  
 REVISED  
 SHEET M-3  
 BLDG. 3  
 OF