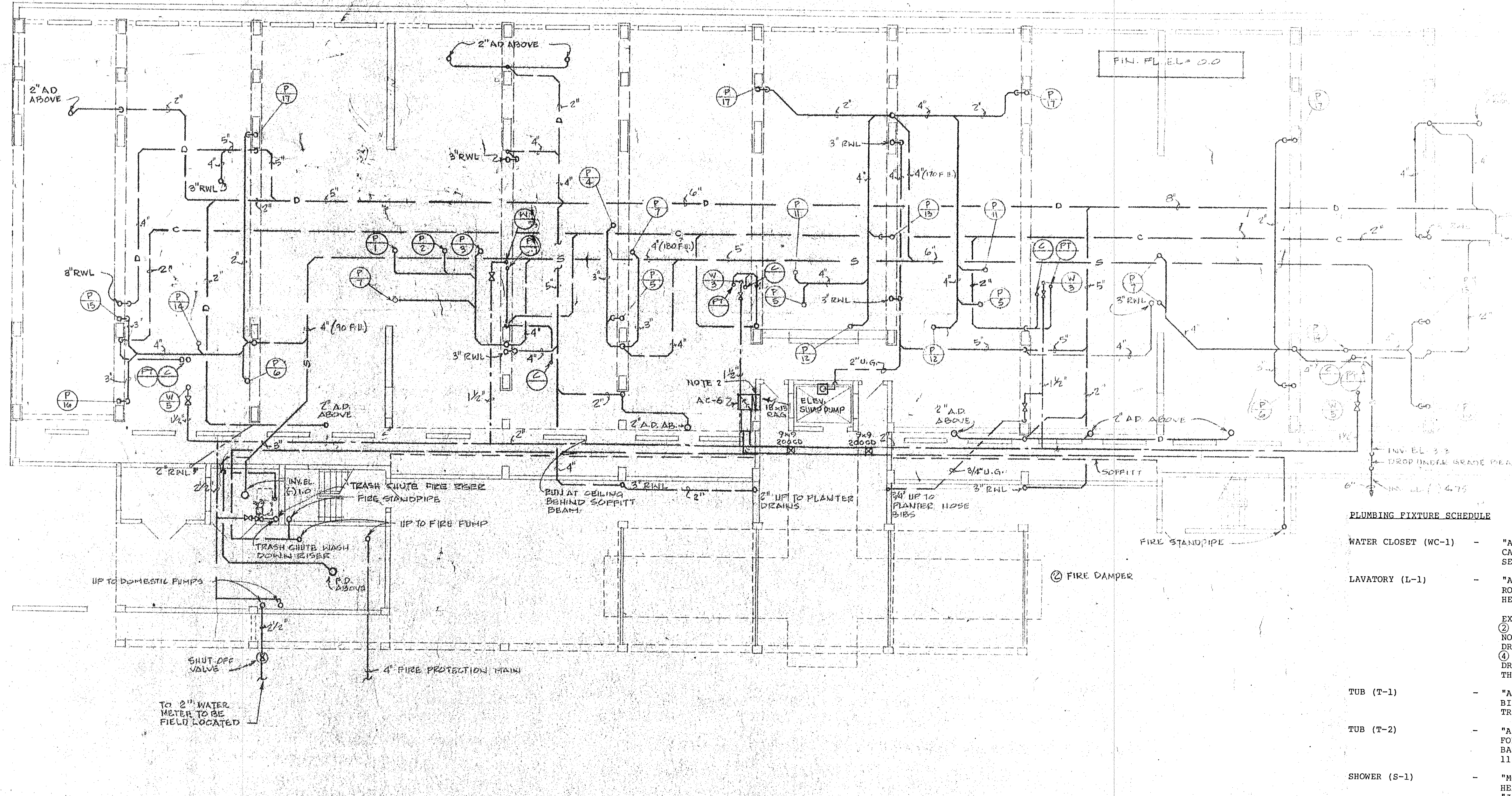


**PLANTER HOSE BIB RISER**

**PLANTER DRAIN RISER**



**PLUMBING FIXTURE SCHEDULE**

WATER CLOSET (WC-1)	-	"AMERICAN STANDARD" CADET 2109.395 SEAT #5330.063
LAVATORY (L-1)	-	"AMERICAN STANDARD" RONDALYN 0490.011 HERITAGE FAUCET 2248.615
EXCEPT: ① A & A+ DRESSING ROOM, ② B & B+ DRESSING ROOM AND BATH NO. 2, ③ C, C+ AND C MOD. DRESSING ROOM AND BATH NO. 2, ④ D+ BATH #1, ⑤ D & D MOD. DRESSING ROOM, ⑥ D BATH NO. 2. THESE LAVS. BY OTHERS		
TUB (T-1)	-	"AMERICAN STANDARD" BILDOR 2265.379 OR 2267.375 TRIM - "MOEN" 2235
TUB (T-2)	-	"AMERICAN STANDARD" FONTAINE 2650.057 BATH FILLER "HERITAGE" 1110.014
SHOWER (S-1)	-	"MOEN" 2225 VALVE AND SHOWER HEAD (W/FLOW CONTROL). DRAIN "JOSAM" 30000-A W/NIKALLOY TOP
KITCHEN SINK (K-1)	-	"ELKAY" PACEMAKER/STARLITE PFR-3322, FAUCET "MOEN" 7310 #4148.037, STRAINERS #4331.013
WASHER BOX (W-1)	-	WATERTIGHT #1000
FLOOR DRAIN	-	"JOSAM" 30000-A W/NIKALLOY TOP
AREA DRAIN	-	"JOSAM" 23710
PARAPET DRAIN	-	"JOSAM" 24730 (45° SIDE OUTLET)
ROOF DRAIN	-	"JOSAM" 21000 (CAST IRON DOME)

**BUILDING 3 - GROUND FLOOR MECHANICAL PLAN**

Scale 1/8" = 1'-0"

SUNSET BEACH SOLENOID BOAT KEY  
 ARVICA CORPORATION, EDWARD J. SERRET, AIA, ARCHITECT & PLANNER FOR THE SWA GROUP  
 BRASHAM KUHN DEBAY CONSULTING ENGINEERS, OLSEN WHITE & ASSOCIATES, STRUCTURAL ENGINEERS  
 BENNETT & BISHOP, INC. CONSULTING ENGINEERS & SURVEYORS  
 ISSUED 4/1/80  
 REVISED  
 SHEET  
**M-1**  
 BLDG. 3