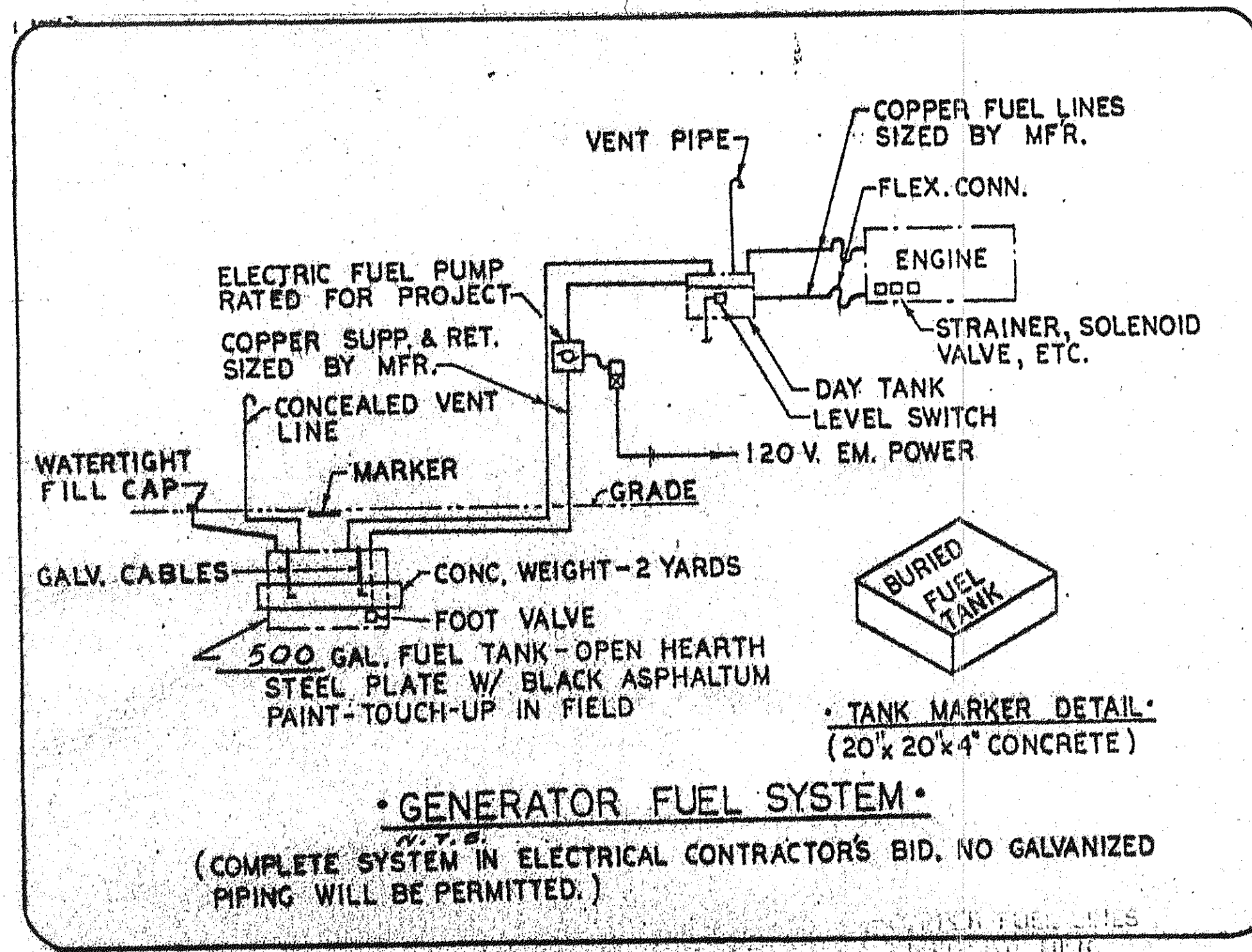


# FIXTURE SCHEDULE

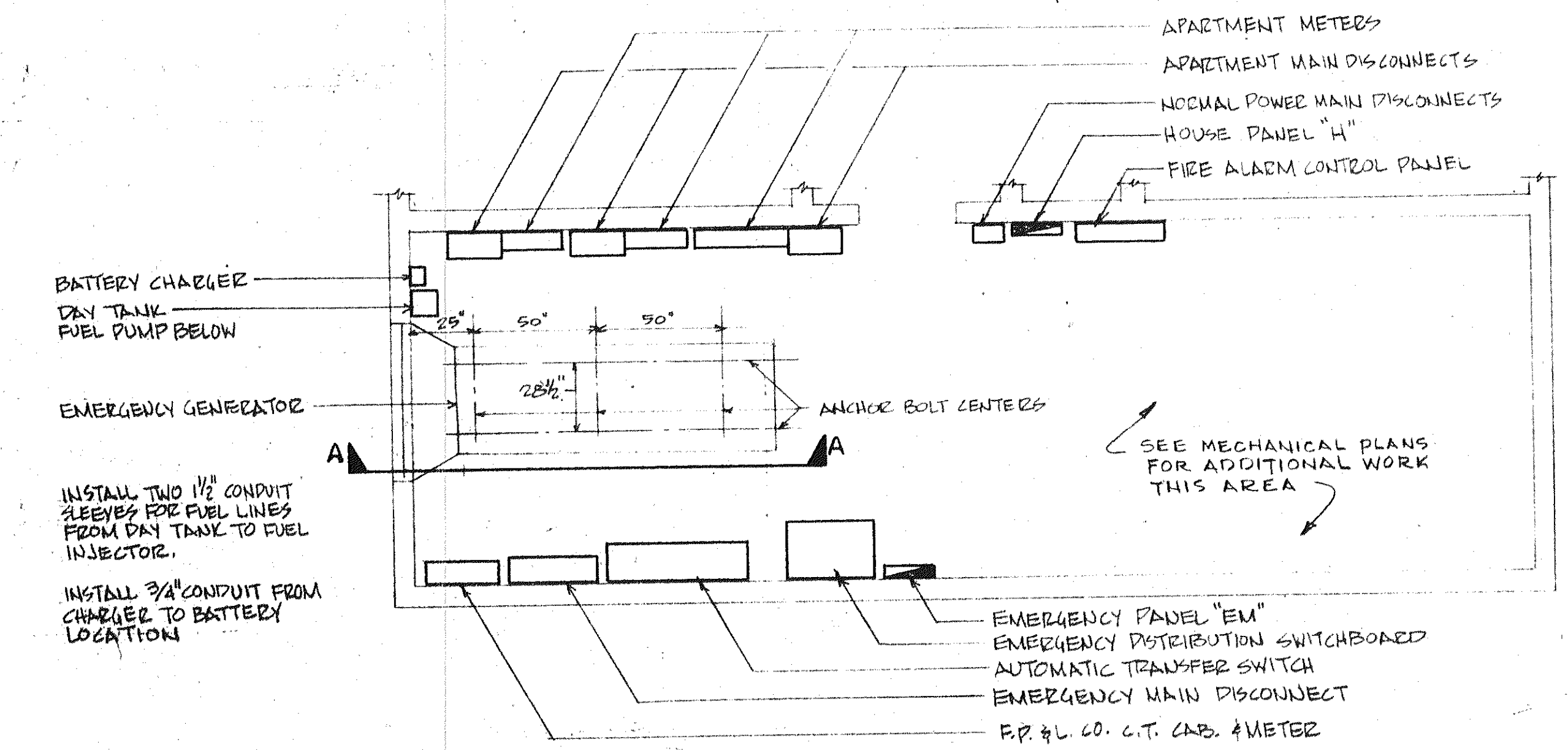
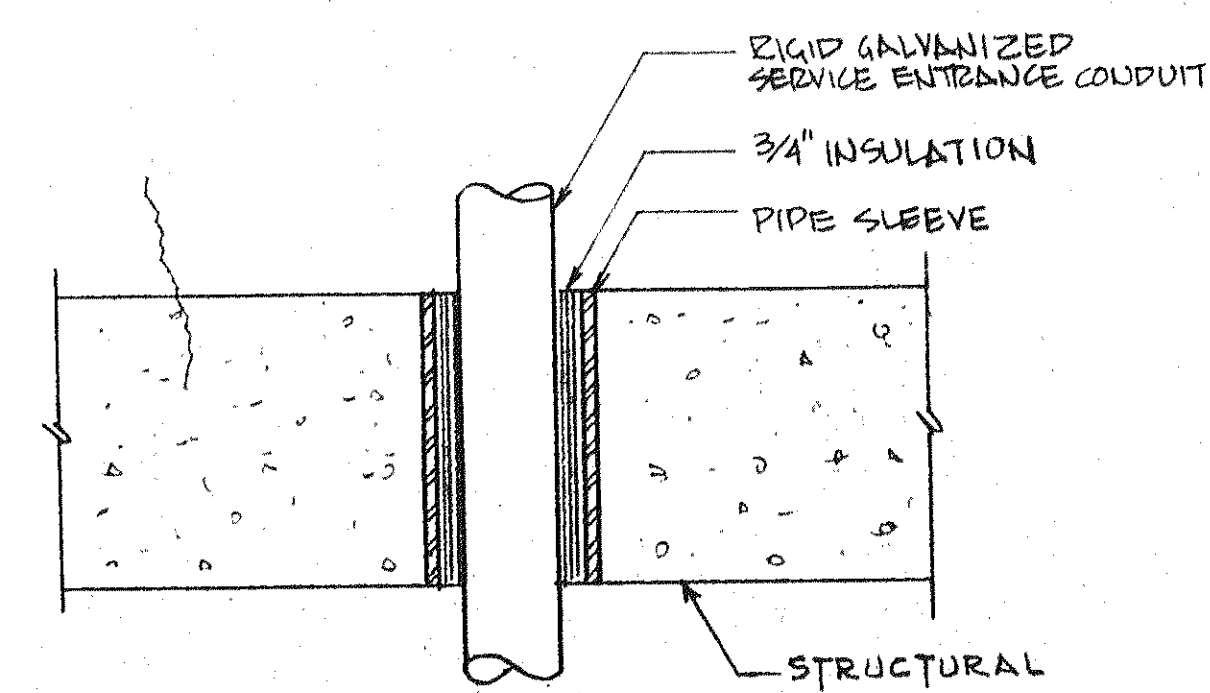
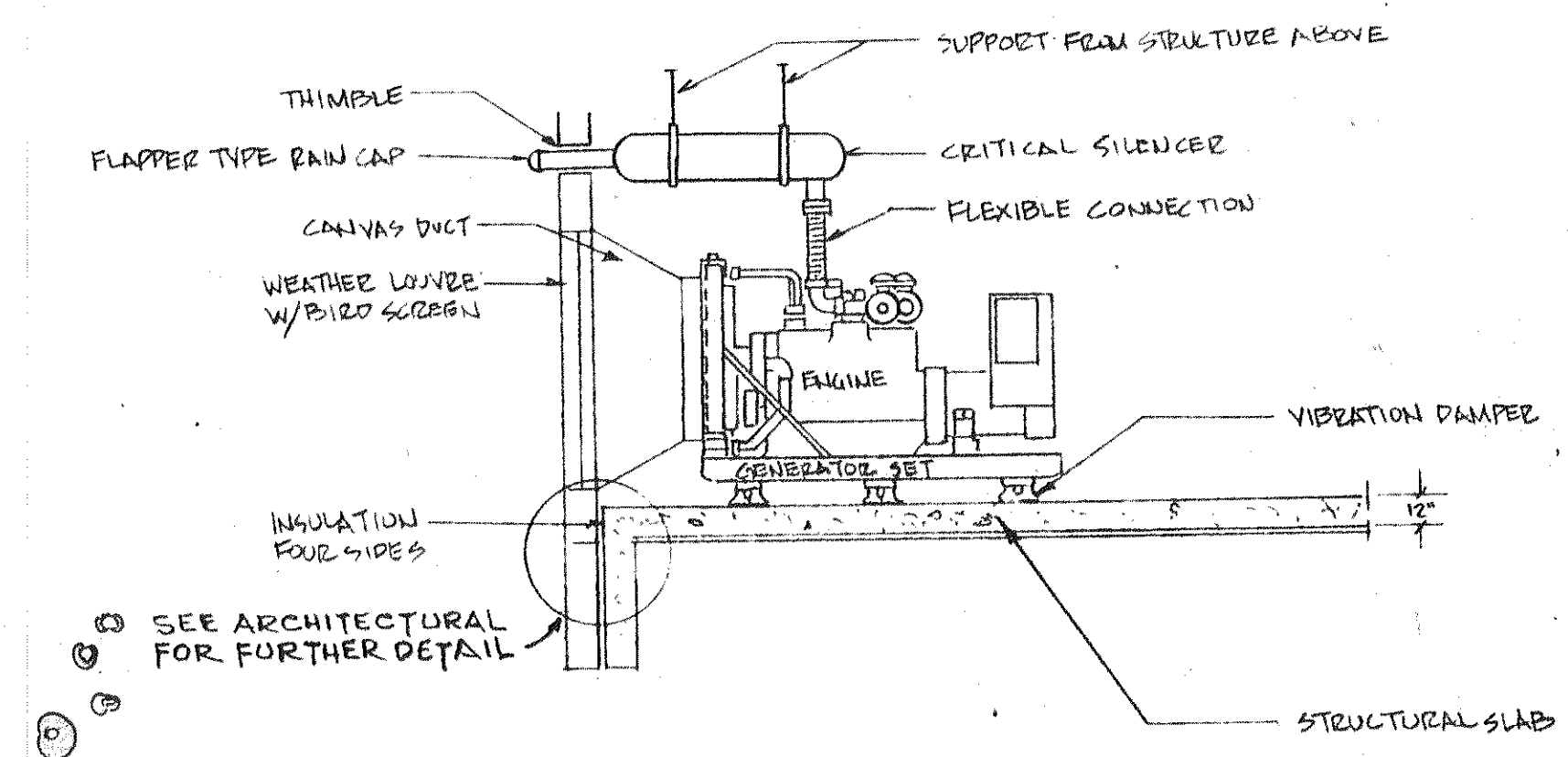
TYPE	MANUFACTURER	CATALOG NO.	LAMPS	VOLTS	MOUNTING	REMARKS
A	PRESCOLITE LIGHTOLIER	9342 STD. 1803	1-75W 40	120	SURFACE	
B	PRESCOLITE LIGHTOLIER	9346 STD. 1833	1-75W 40	120	WALL BRACKET	
C	LITHONIA KEYSTONE	4TDP 240 A LU 240 WLLE	2-F40	120	SURFACE	
D	LIGHTOLIER PROGRESS	1355B P7199 LE 120V	2-F40	120	SURFACE	
E	PRESCOLITE LIGHTOLIER	21K-S-5 1102-1107	1-150R-40	120	RECESSED	
N	PRESCOLITE LIGHTOLIER	21K-S-2 1102-PI-1171	1-75A19	120	RECESSED	
F	ALICO PROGRESS	2B-BW P7010-120V NPF	2-TB 13W	120	UNDER CABINET	
F1	ALICO PROGRESS	10B-SW P7000-120V NPF	1-TB 13W	120	UNDER CABINET	
G	LIGHTOLIER	1101/1121	1-75A19	120	RECESSED	
H	LITHONIA KEYSTONE	BTG 240 C240-LE-120V	4-F40	120	SURFACE	NOTE SOME 36" LAMP SEE PLANS
I	PRESCOLITE LIGHTOLIER	820 HF-1 1102-PI-1177	2-100A19	120	RECESSED	
K	RED DOT	VWG-01-C	1-100A19	120	WALL BRACKET	
L	LITHONIA SIMKAR	BTSC 240A IF240-LG	4-F40	120	SURFACE	
X	DUAL LITE LIGHTALARMS	X-2100 OR K-2121 UXA 120V	2-20T6 1/2	120	SURFACE-WALL	
M	KIM HUBBELL	4010N 309-15	1-150W	120	BRACKET	DIMMED TO 50% VOLTAGE



### ELECTRICAL LEGEND

NOTE: THESE SYMBOLS ARE PROVIDED AND DO NOT NECESSARILY APPLY TO THE DRAWING.

- FLUORESCENT FIXTURE - CROSS HATCH INDICATES EMERGENCY CIRCUIT (PROVIDE FLUORESCENT BATTERY INVERTER ON ONE LAMP OF EACH EMERGENCY FIXTURE)
- FLUORESCENT FIXTURE - CENTER LAMP ON EMERGENCY CIRCUIT (PROVIDE FLUORESCENT BATTERY INVERTER ON CENTER LAMP OF EACH FIXTURE)
- FLUORESCENT FIXTURE - SINGLE LAMP CHANNEL
- INCANDESCENT OR HID FIXTURE - CROSS HATCH INDICATES EMERGENCY CIRCUIT
- EXIT SIGN FIXTURE - DIRECTION ARROWS AS INDICATED
- LIGHT FIXTURE TYPE DESIGNATION - SEE SCHEDULE
- TOGGLE SWITCH - SPST, UP 30° OR AS NOTED
- TOGGLE SWITCH - DPST, UP 44° OR AS NOTED
- TOGGLE SWITCH - 3 WAY, UP 30° OR AS NOTED
- TOGGLE SWITCH - 4 WAY, UP 44° OR AS NOTED
- TOGGLE SWITCH - W/RED PILOT LIGHT INDICATING SWITCH "ON" - UP 44°
- TOGGLE SWITCH - MANUAL MOTOR RATED WITH THERMAL O.L.
- TOGGLE SWITCH - SPST - KEY OPERATED
- TOGGLE SWITCH - W/DIMMER CONTROL - UP 44° OR AS NOTED
- SINGLE RECEPTACLE - 120 V. - UP 18° OR AS NOTED
- SINGLE RECEPTACLE - 120 V. - UP 18° OR AS NOTED - DEDICATED
- DUPLEX RECEPTACLE - 120 V. - UP 18° OR AS NOTED
- DUPLEX RECEPTACLE - 120 V. - TOP HALF SWITCHED - UP 18° OR AS NOTED
- SPECIAL PURPOSE OUTLET - REMA TYPE SHOW (MATCH EQUIPMENT TO BE SERVED)
- FLOOR OUTLET - FLUSH W/SINGLE RECEPTACLE 15A, 120V.
- FLOOR OUTLET - FLUSH W/SINGLE RECEPTACLE 15A, 120V. - DEDICATED
- FLOOR OUTLET - SURFACE W/DUPLEX RECEPTACLE 15A, 120V.
- CLOCK HANGER RECEPTACLE - UP 8°-0° OR AS NOTED
- THERMOSTAT OUTLET - DEVICE FURNISHED BY MECHANICAL CONTRACTOR
- TELEVISION ANTENNA SYSTEM WALL OUTLET - UP 18° OR AS NOTED
- TELEPHONE WALL OR FLOOR OUTLET - WALL OUTLET UP 18° OR AS NOTED
- SAFETY SWITCHES (NO POLES, 100 FRAME SIZE, (D) FUSE SIZE, (N) F NON-FUSED
- MAGNETIC MOTOR STARTER OR CONTACTOR - (2) NEMA SIZE
- ELECTRIC MOTOR - SIZE AS SHOWN
- PUSHBUTTON SWITCHES
- ELECTRIC LIGHTING AND/OR APPLIANCE PANELBOARD
- ELECTRIC EQUIPMENT - DESIGNATED AS SHOWN
- CONDUIT RUN CONCEALED IN FLOOR, WALL OR CEILING
- CONDUIT RUN CONCEALED IN FLOOR OR UNDERGROUND
- CONDUIT RUN EXPOSED PARALLEL TO BUILDING LINE
- NUMBER TO PANEL LINES INDICATE NO. OF CIRCUIT CONDUCTORS
- W.P. INDICATES WEATHER PROOF ENCLOSURE OR COVER AS REQUIRED
- G.F.I. DENOTES GROUND FAULT INTERRUPTER
- PHOTO ELECTRIC CELL
- P.C. PULL CHAIN
- T.C. TIME CLOCK
- J.B. JUNCTION BOX
- C.J. CEILING JUNCTION BOX
- E.S.H. ELECTRIC STRIP HEATER
- D.C. DOOR CHIME (C) DOOR BELL (B)



SUNSET BEACH KEY  
 SOFELONG BOAT KEY  
 ARVIDA CORPORATION • EDWARD J. SEIBERT AIA ARCHITECT & PLANNER PA • THE SWA GROUP  
 BRADHAM, KUHN, DEBAY CONSULTING ENGINEERS • OLSEN WHITE & ASSOCIATES STRUCTURAL ENGINEERS • BENNETT & BISHOP, INC. CONSULTING ENGINEERS & SURVEYORS

ISSUED	1-1-83
REVISED	
SHEET	E-19
BLDG.	3
OF	