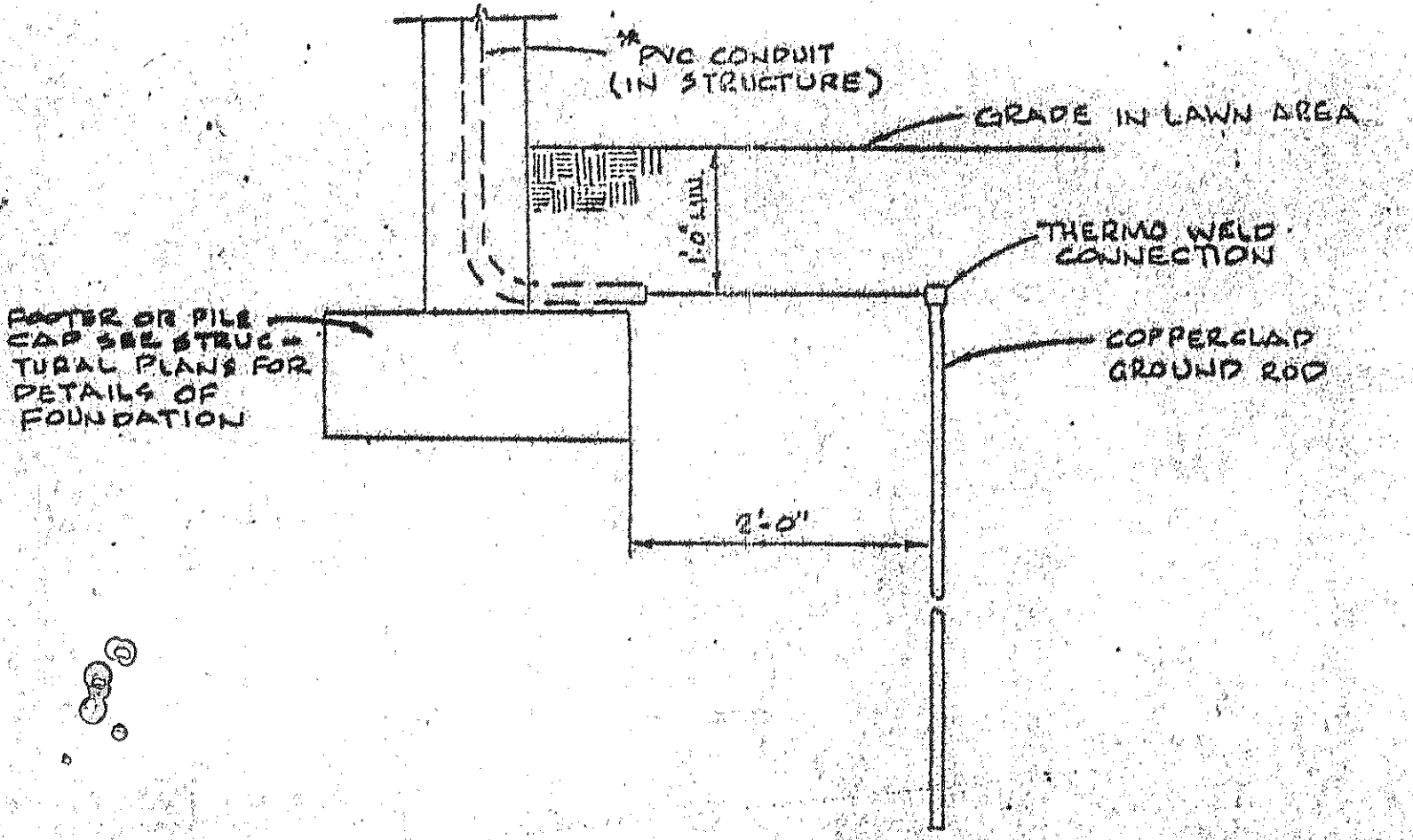
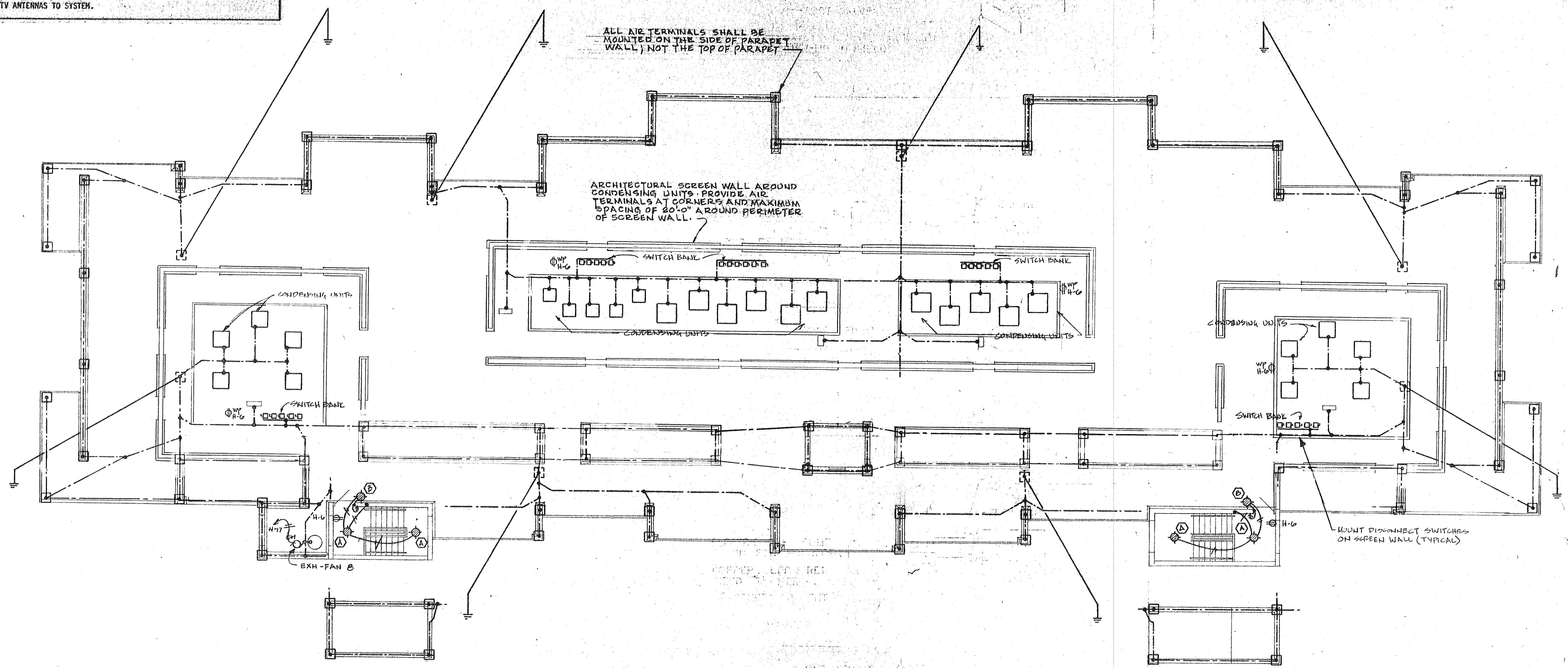
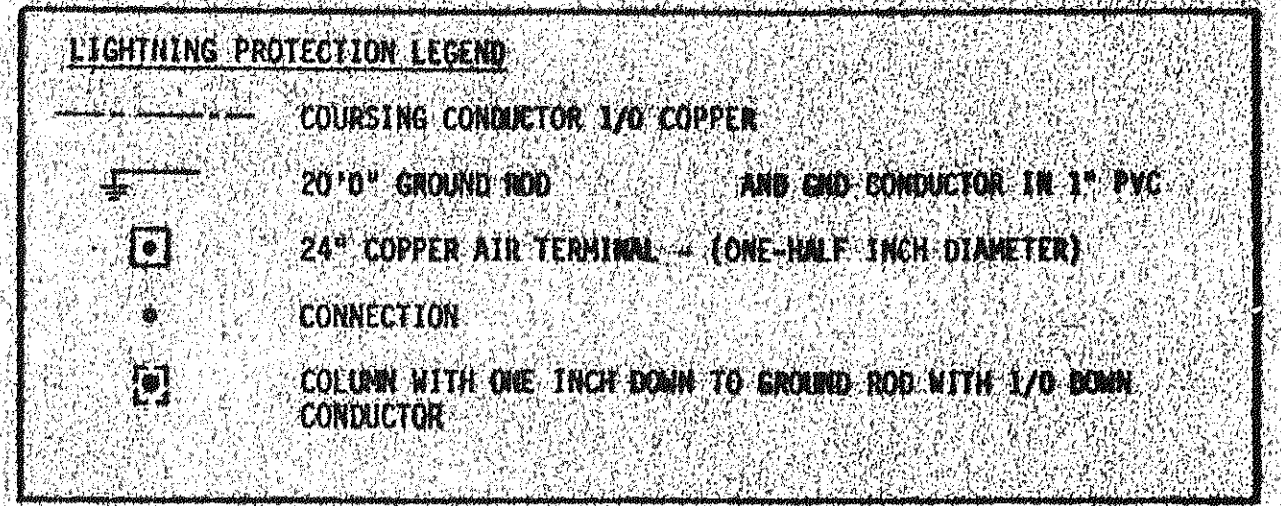


- LIGHTNING PROTECTION NOTES**
- DOWN CONDUCTORS ARE TO BE RUN IN PVC CONDUITS CAST IN CONCRETE, EXITING ABOVE PILE CAPS. GROUND RODS ARE TO BE 20' COPPERCLAD. (STRUCTURAL STEEL COLUMNS MAY BE USED AS DOWN CONDUCTORS FOR LIGHTNING PROTECTION SYSTEM.)
 - DOWN CONDUCTORS SHALL CONNECT TO GROUND RODS USING THERMAL WELDS. GROUND RODS SHALL BE BELOW GRADE IN ACCESSIBLE LAWNS.
 - USE #1/0 CONDUCTORS TO CONNECT TO ALL METALLIC ITEMS THAT RISE 12" OR MORE ABOVE ROOF.
 - INSTALLATION OF ALL COMPONENTS SHALL COMPLY WITH REQUIREMENTS OF NFPA 78 TO PROVIDE SYSTEM W/L MASTER LABEL.
 - ALL ROOF CONDUCTORS ARE TO BE SUPPORTED EVERY FIVE FEET USING APPROVED FASTENERS ON PARAPETS AND USING PITCH PANS ACROSS ROOF.
 - NO COURSING OR DOWN CONDUCTORS ARE TO TURN DOWN THEN UP EXCEPT WHERE DOWN CONDUCTOR GOES DIRECTLY TO GROUND.
 - COORDINATE ALL WORK WITH ROOFER.
 - BOND TV ANTENNAS TO SYSTEM.



BUILDING 3 - ELECTRICAL ROOF PLAN
 scale 1/8" = 1'-0"

DOWN CONDUCTOR & GROUND DETAIL AT GROUND