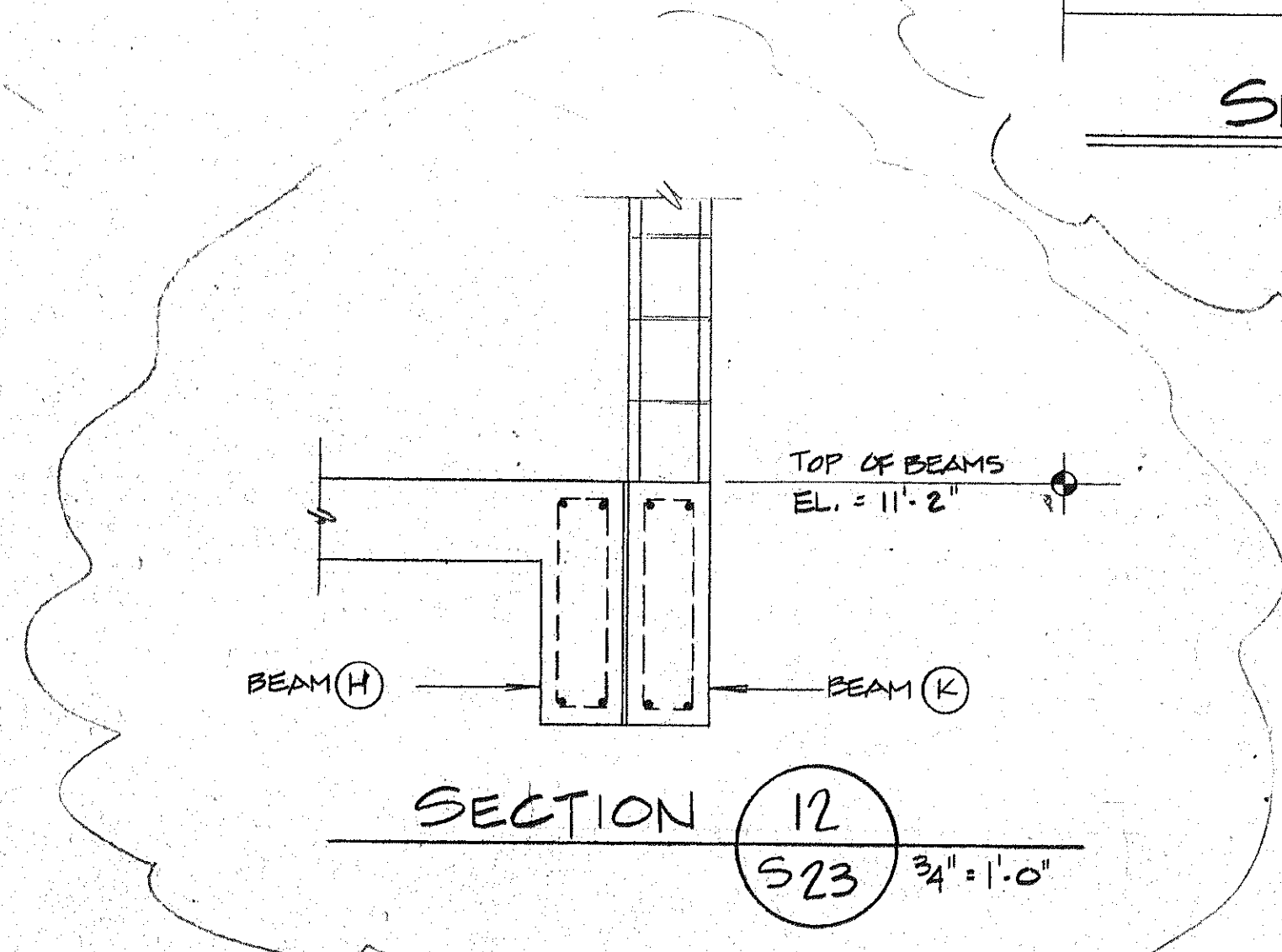
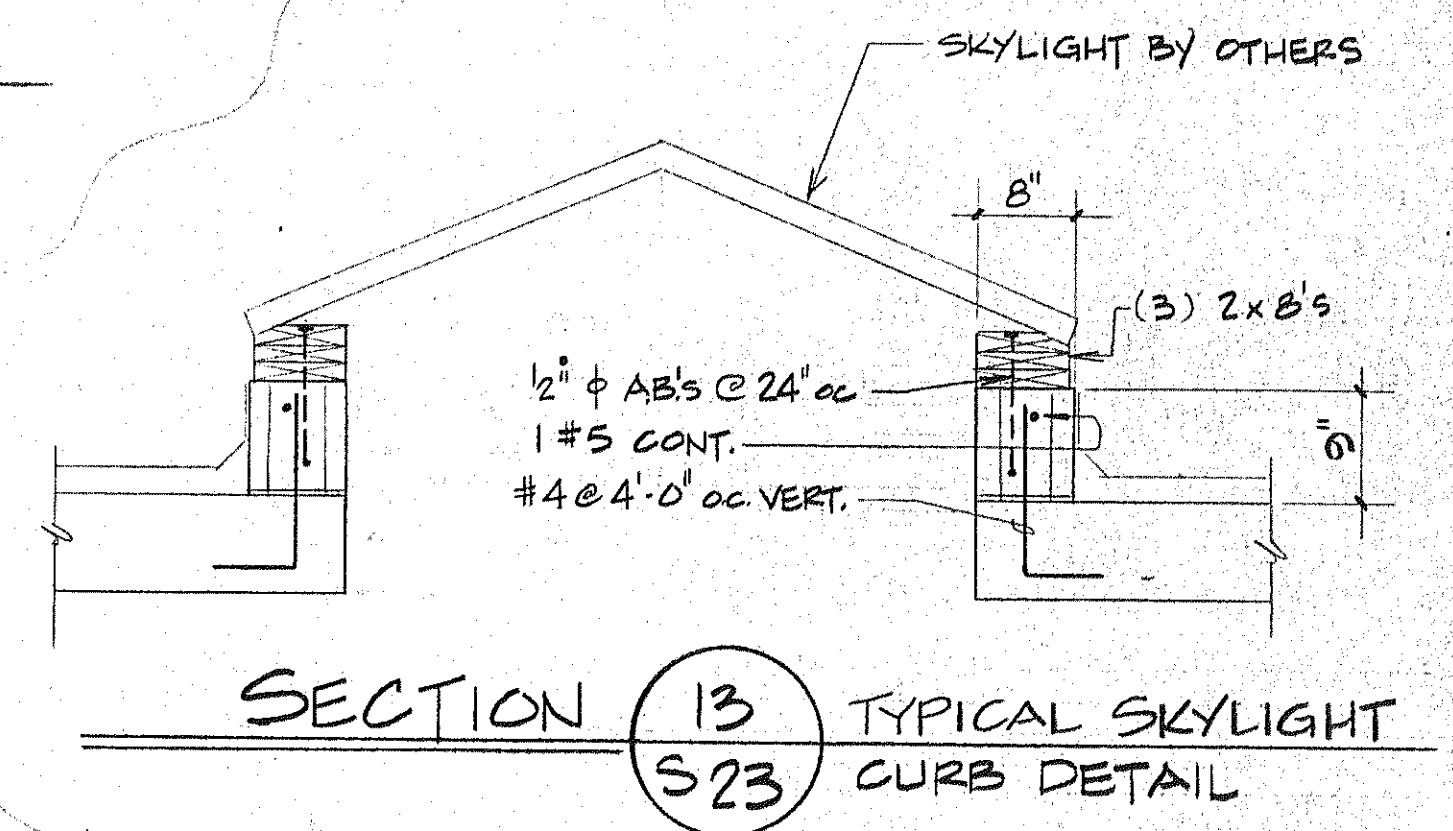
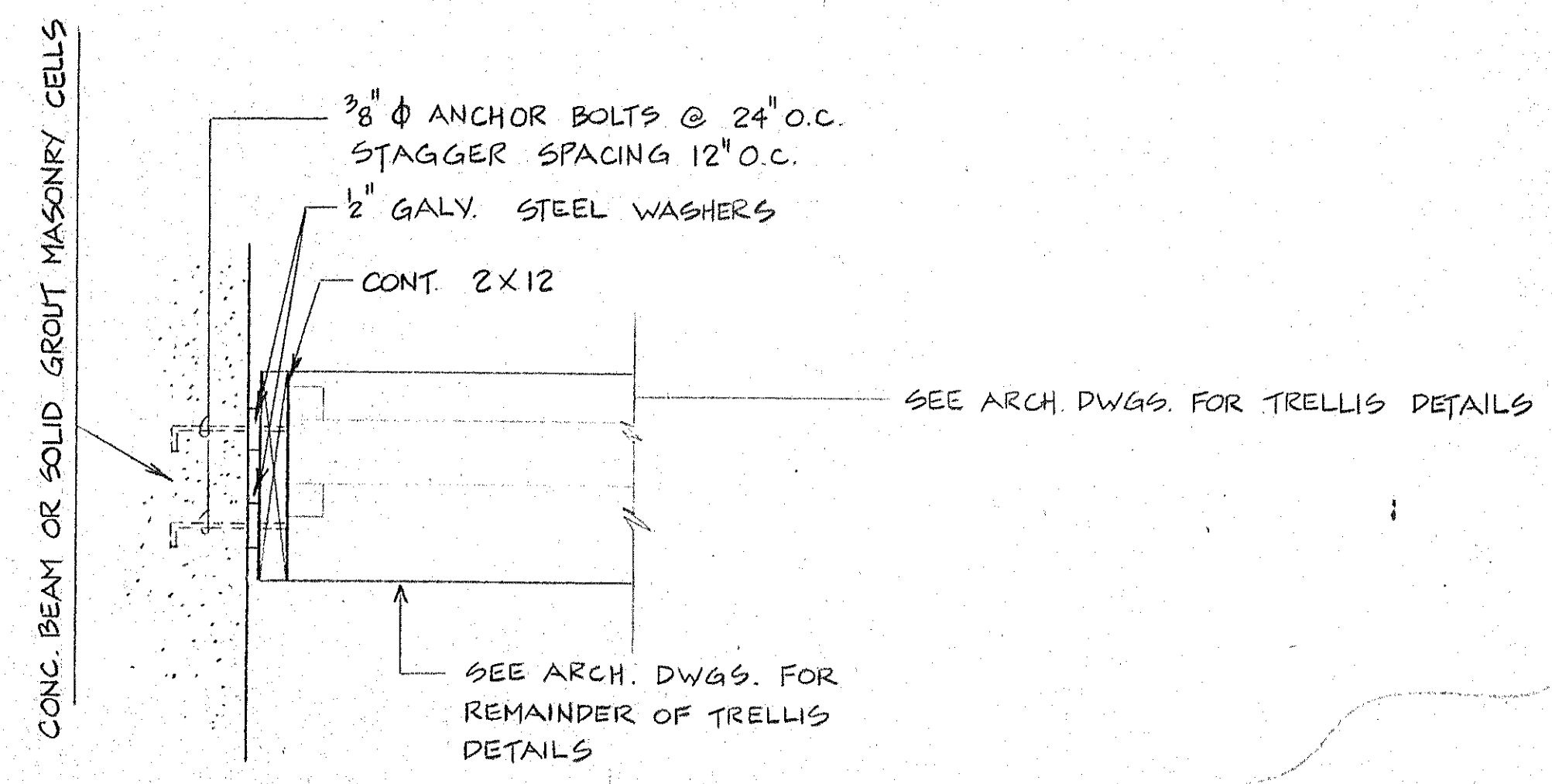
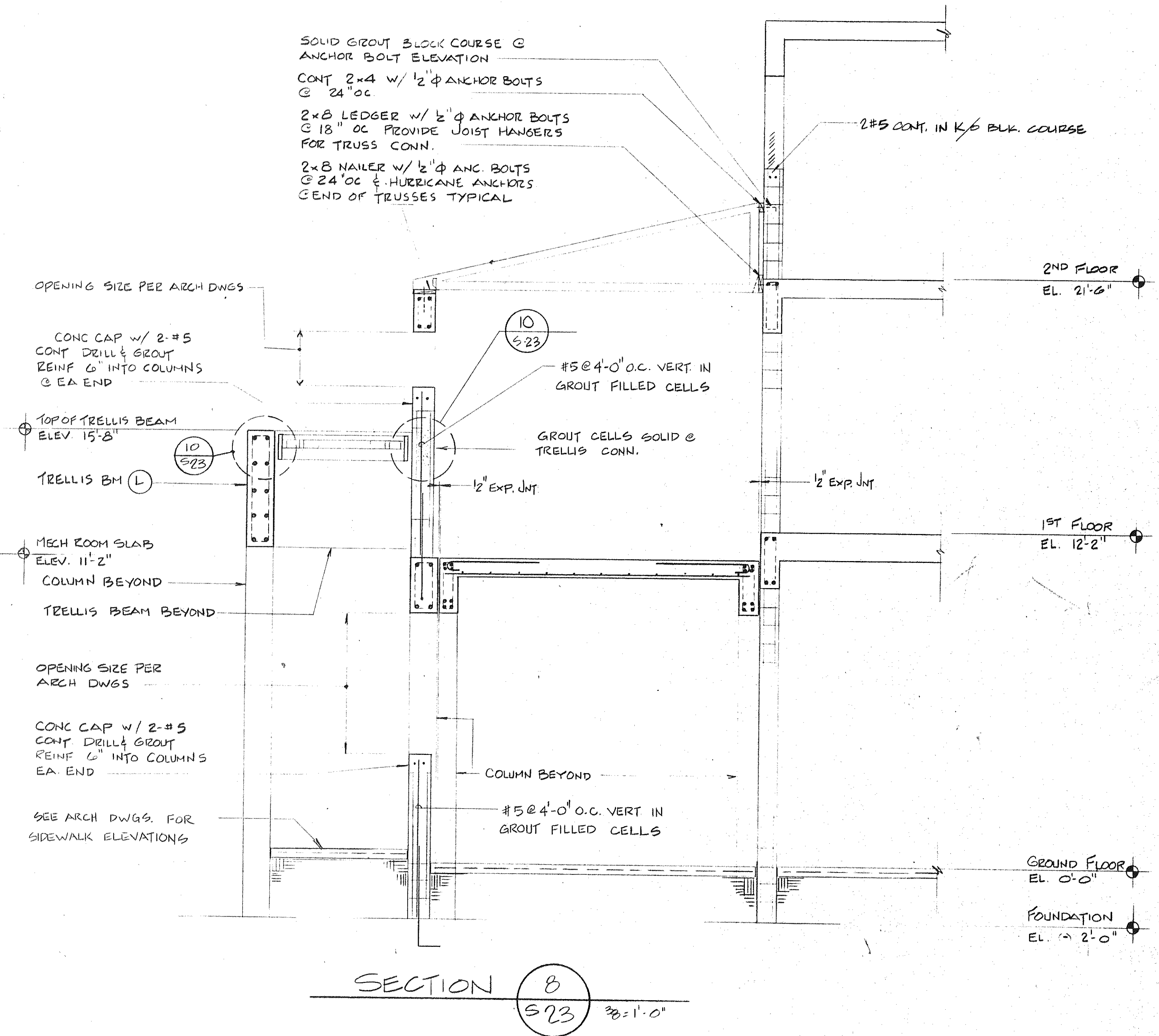


TRELLIS NOTES:
 WOOD TRELLIS MEMBER TO CEDAR WITH MINIMUM FIBER BENDING STRESS = 600 PSI MODULUS OF ELASTICITY = 1000 KSI



SUNSET BEACH
SOFT LONGBOARD
SECTIONS 8 & DETAILS
BUILDING 2
 ARYDA CORPORATION EDWARD J. SEBERT AIA ARCHITECT & PLANNER IN CHARGE THE SWA GROUP
 BRABHAM KUNIS DEBAY CONSULTING ENGINEERS CLARENCE WHITE & ASSOCIATES STRUCTURAL ENGINEERS
 ISSUED 12-10-57
 REVISED 1-4-58
 4-1-58
 SHEET S. 23 OF 24