

SEE SECTION 6/S-22 FOR WALL REINF

1-#4 CONT IN CONC CAP
#4 @ 4'-0" VERT IN GROUT FILLED CELLS

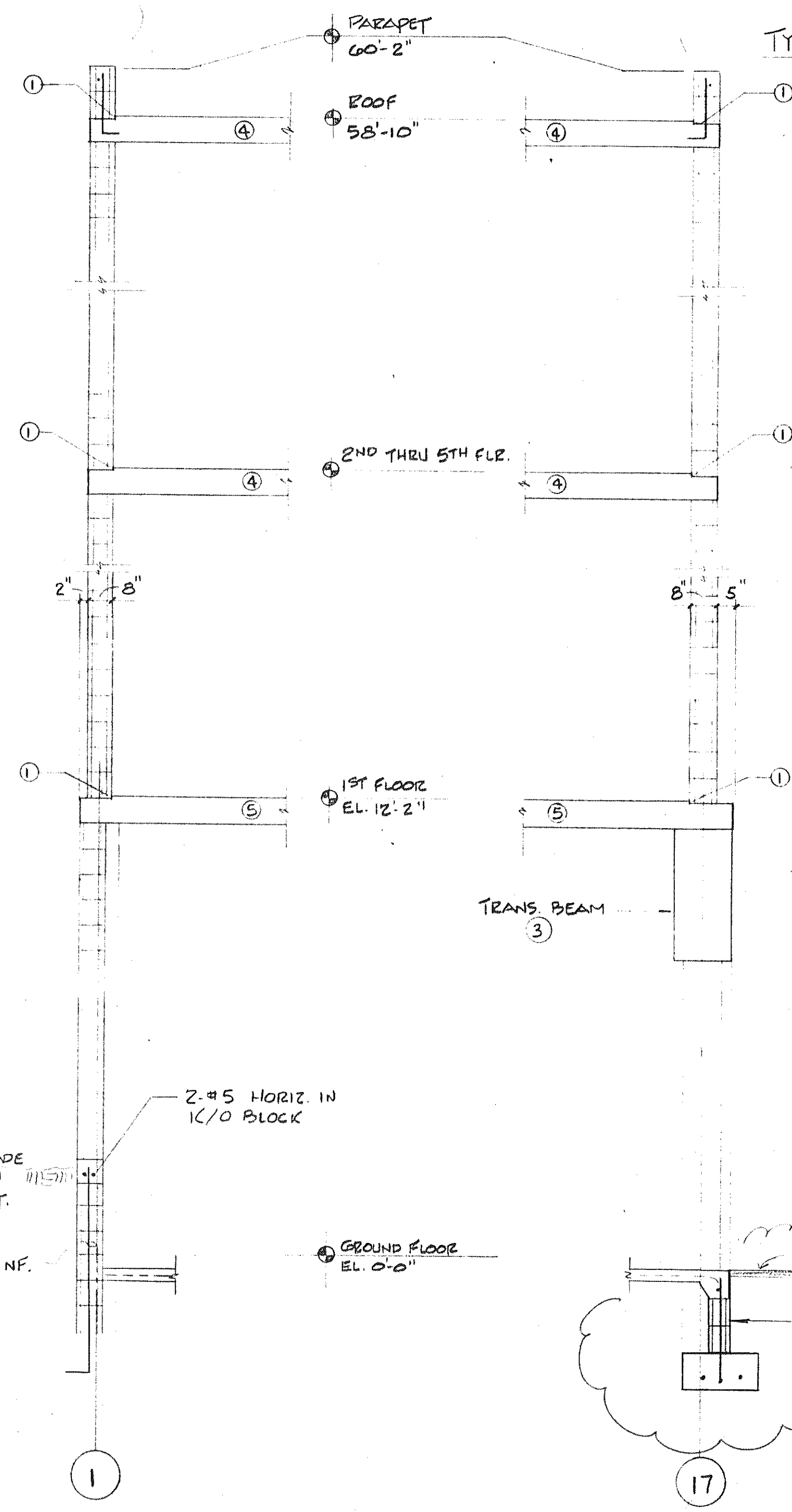
6" CONC. SLAB (3000 PSI)
W/ #4 @ 12" OC EA WAY
(SEE ARCH. DWGS FOR EXTENT)

4" URETHANE PER ARCH. DWGS

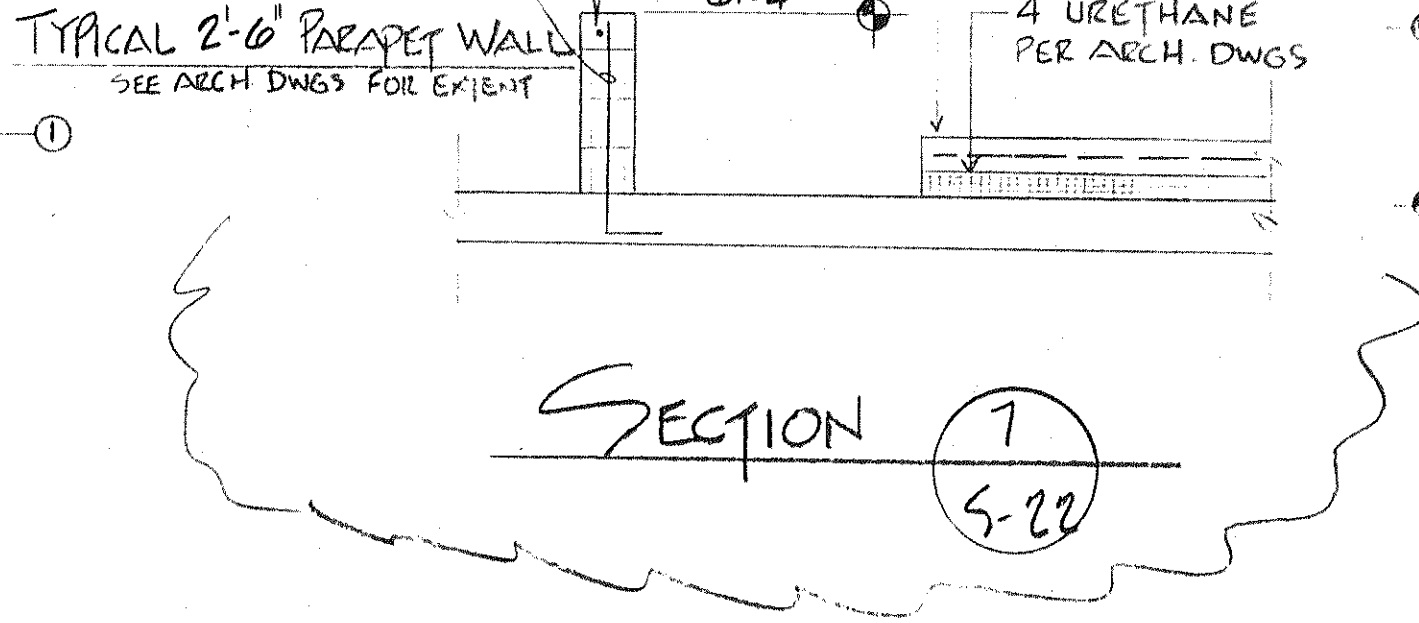
TYPICAL 1'-4" PARAPET WALL
(SEE ARCH DWGS FOR EXTENT)
1-#4 CONT. IN K/O BLOCK
#4 @ 4'-0" VERT IN GROUT FILLED CELLS

LEGEND

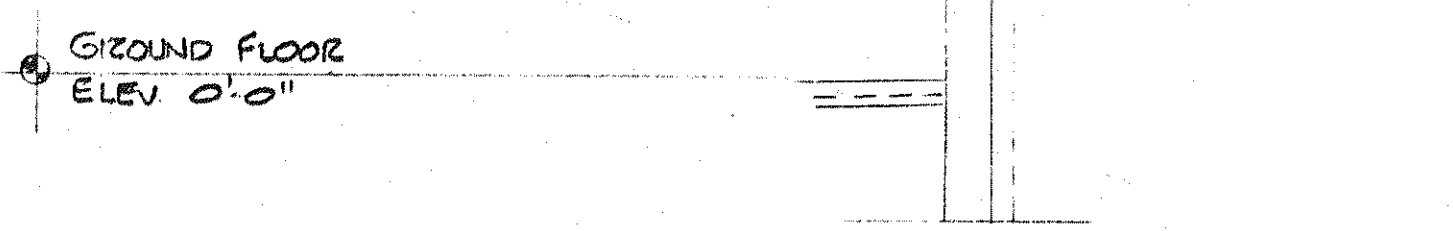
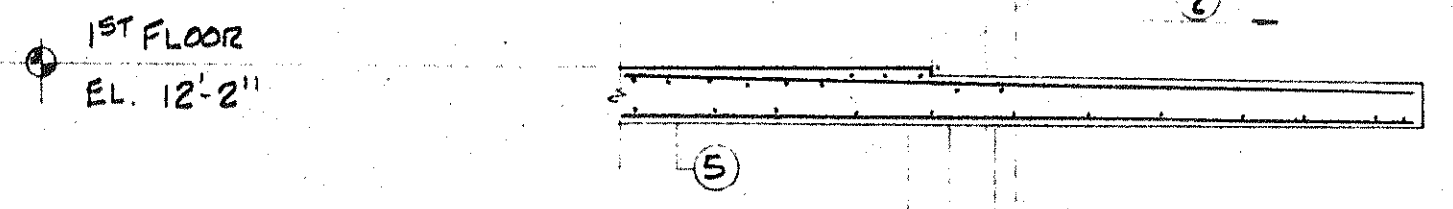
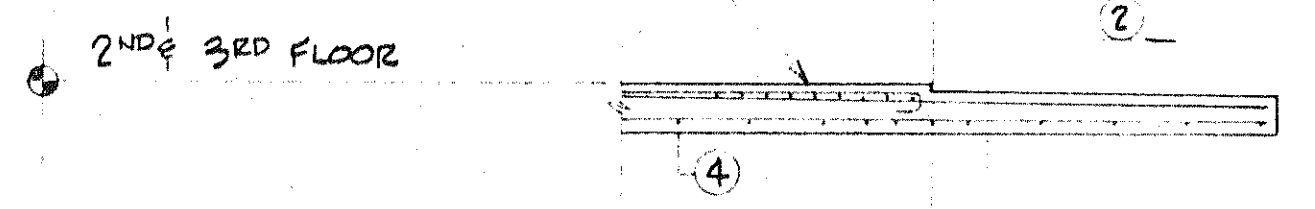
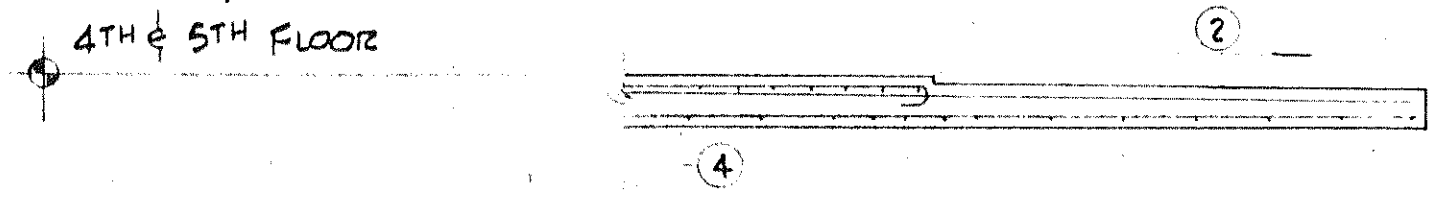
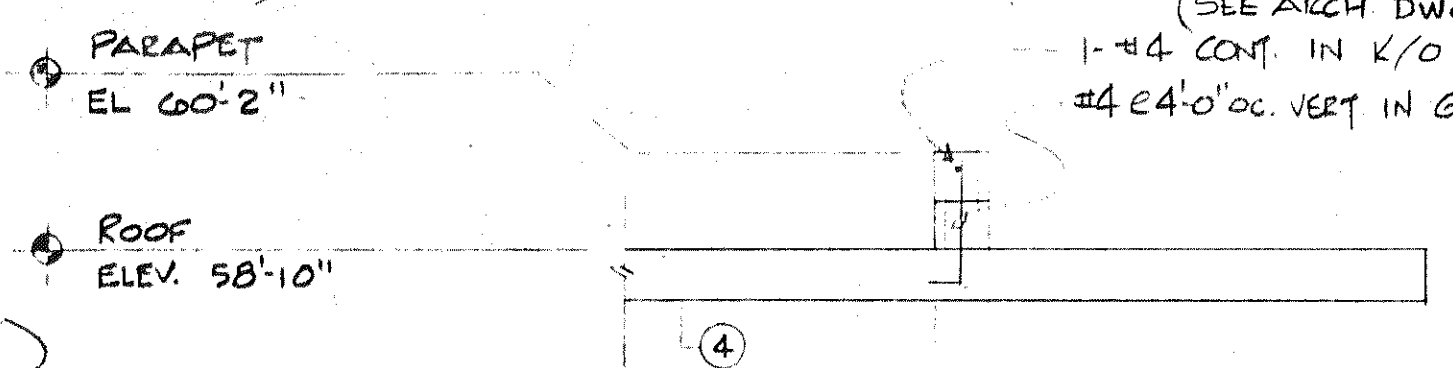
- ① 3/4" DAP (STEP) TO OCCUR BEHIND MASONRY WALLS & MULLIONS
- ② SLOPE SLAB DOWN TO EXTERIOR FACE OF BLDG.
- ③ TRANSFER BEAM SEE PLAN FOR LOCATION & SCHEDULE FOR REINF.
- ④ 8" CONC SLAB
- ⑤ 8 3/4" CONC. SLAB
- ⑥ MASONRY WALL BEYOND



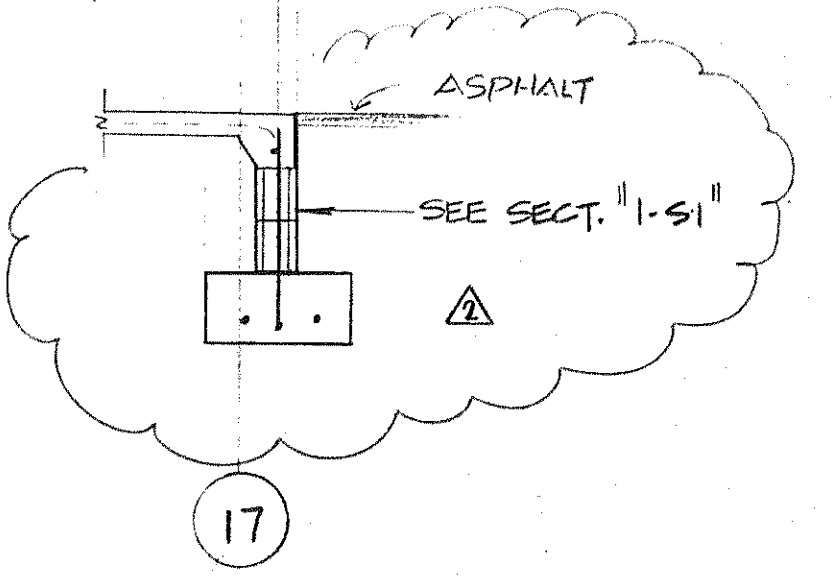
SECTION 4
3/8" = 1'-0" S-22



SECTION 7
5-22



SECTION 6
3/8" = 1'-0" S-22



SECTION 5
3/8" = 1'-0" S-22

SEE SECTIONS 4 & 5 FOR WALL CONDITION BEYOND

SEE SECTION 5/S-22 FOR WALL CONDITION AT TRANS. BEAM

SEE SECTION 4/S-22 FOR WALL CONDITION SHOWN

SUNSET BEACH

78'-11'-0"

BLDG - # 2 SECTIONS & DETAILS

ARVDA CORPORATION, EDWARD J. SEBERT, JIA ARCHITECT & PLANNER, P.A., THE SWA GROUP, BRADHAM, KUHNS, DEBAY CONSULTING ENGINEERS, OLSEN WHITE & ASSOCIATES, STRUCTURAL ENGINEERS, BENNETT & BISHOP, INC. CONSULTING ENGINEERS & SURVEYORS

ISSUED	12-12-27
REVISED	11-4-28
	11-27-28
	4-1-29
SHEET	