

SECTION E CONTINUED
S-20

4TH & 5TH FLOOR
ELEV.
4TH = 40'-2"
5TH = 49'-6"

3RD FLOOR
ELEV. 30'-10"

2ND FLOOR
ELEV. 21'-6"

1ST FLOOR
ELEV. 12'-2"

GROUND FLR.
ELEV. 0'-0"

FOUNDATION
ELEV. (-) 4'-0"

SEE SECT. E S-20 CONTINUED

2#5 HORIZ. CONT. (TYP.)

#4 @ 4'-0" O.C. IN GROUT FILLED CELLS (TYP.)

2#5 HORIZ. CONT. TYP. 1ST & 2ND FLR.

#5 @ 4'-0" O.C. IN GROUT FILLED CELLS TYP. 1ST & 2ND FLR.

2'-0" DEEP MAX. PLANTER SEE ARCH. DWGS FOR PLANTER DETAILS (PLANTING SOIL WEIGHT 70#/FT³ MAX.)

COLUMN BEYOND

SOLID GROUT BLOCK C. CONN.

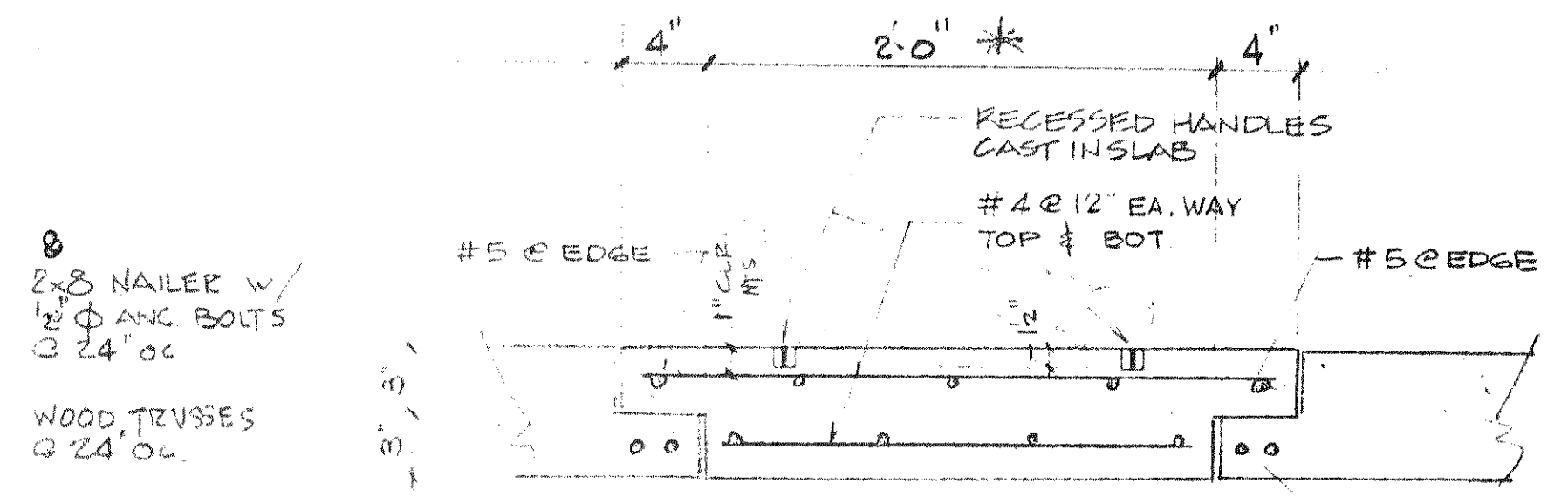
PROVIDE 2#5 HORIZ. IN PRECAST LINTEL TYP. OVER ELEVATOR OPENING BEAR ON WALL EA. END TYPICAL ALL FLOORS

2#5 TOP OF WALL TYP. (4) SIDES

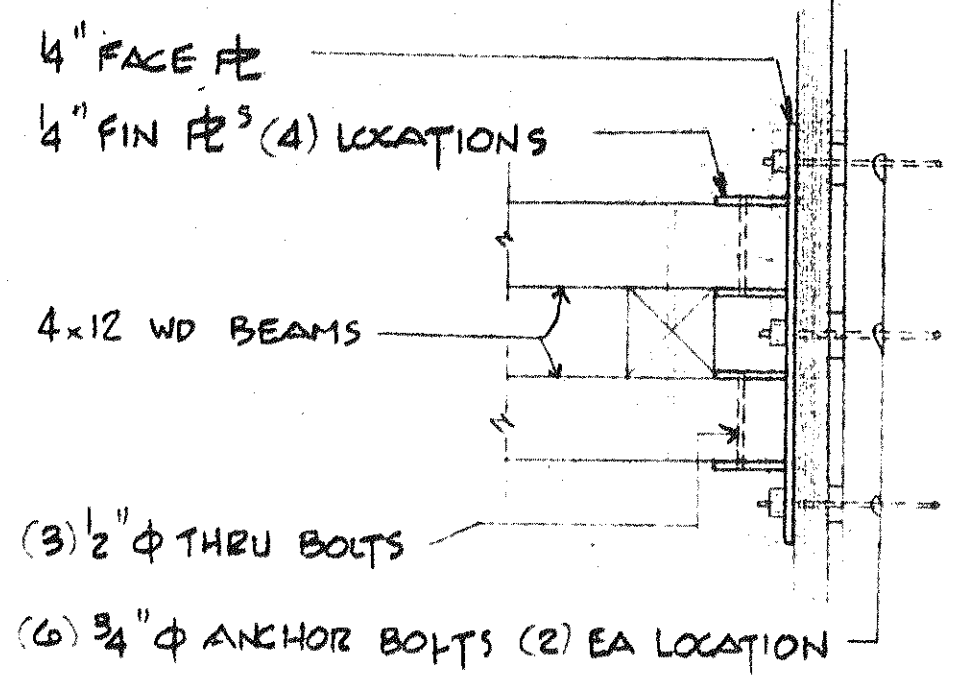
#5 @ 12" O.C. EA. WAY W/ 1/2" CLEAR TO INSIDE FACE OF 8" CONC. WALL TYP. (4) SIDES

* TO BE VERIFIED BY ELEVATOR MANUF. NOTIFY ENG. OF ANY CHANGE

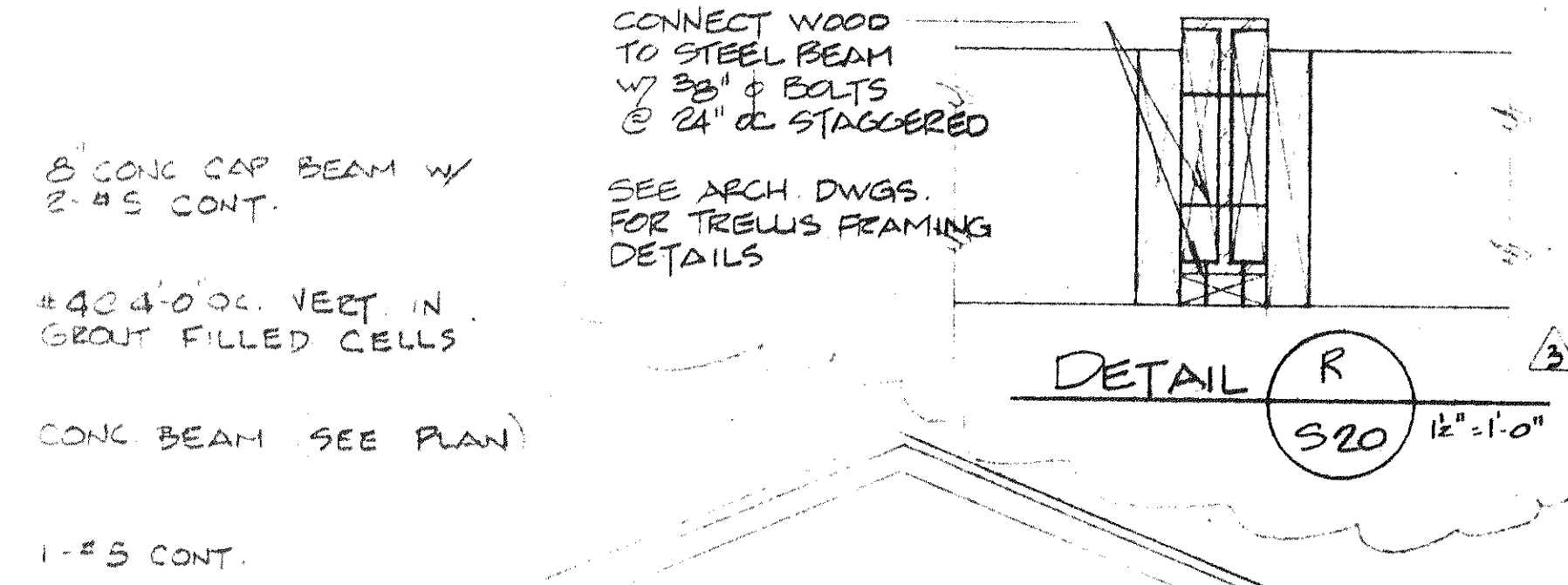
SEE SHY # S-2 FOR PIT FOUND. DETAILS (1/3-2 & 9/3-2)



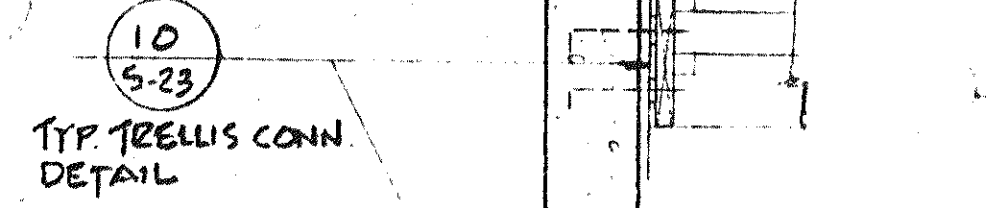
DETAIL B
S-20



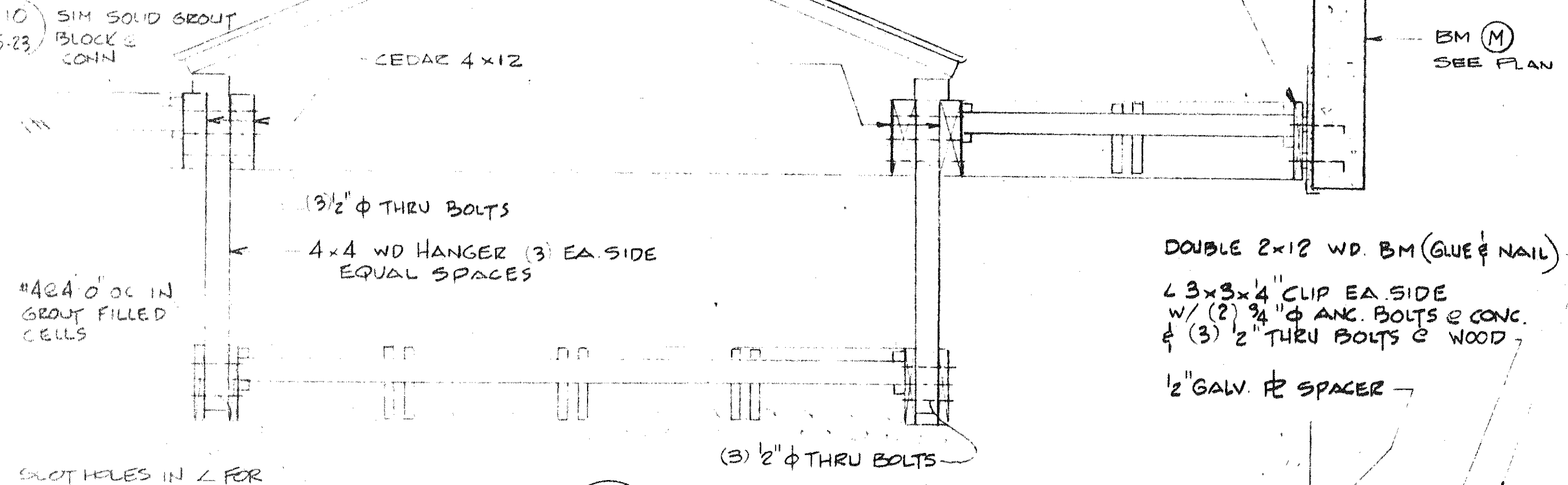
DETAIL Y
S-20



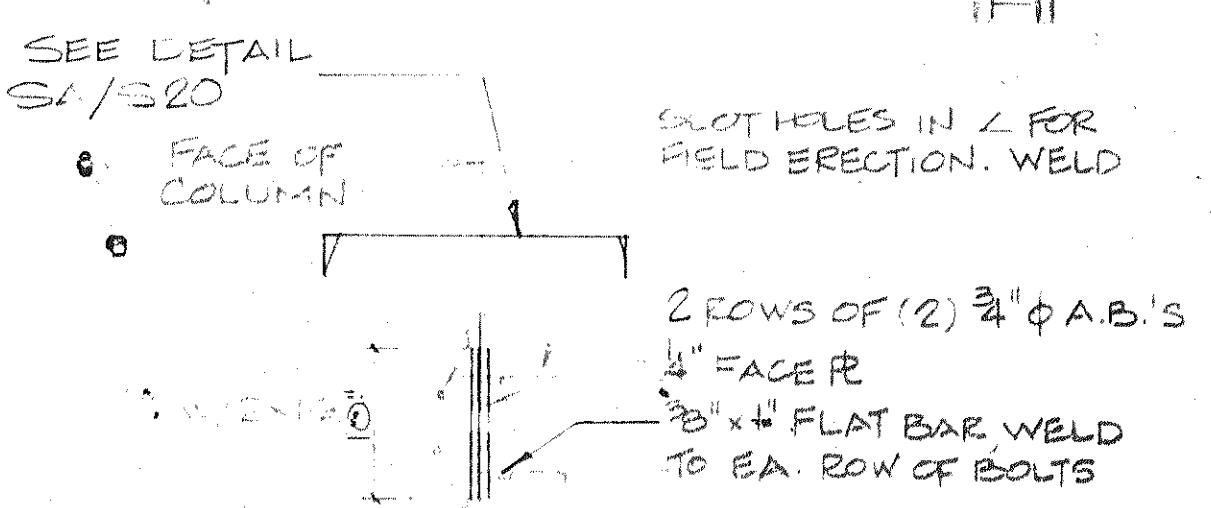
DETAIL R
S-20



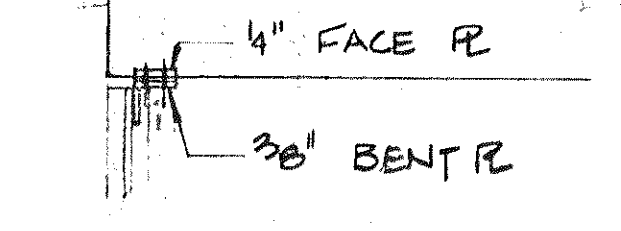
DETAIL X
S-20



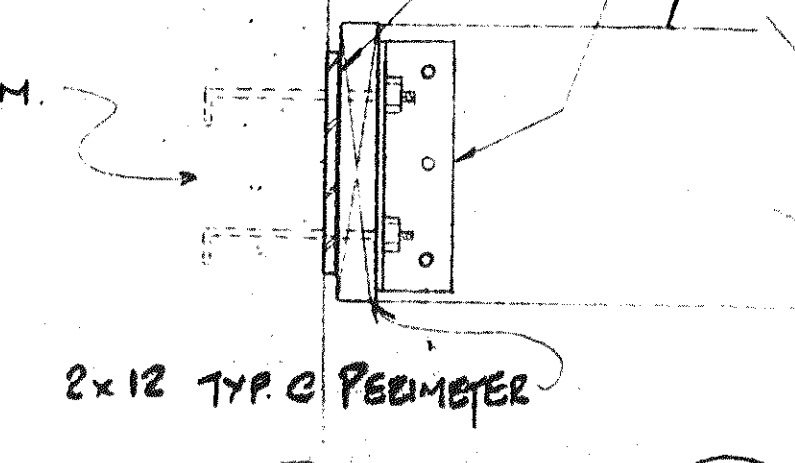
SECTION T
S-20



DETAIL S
S-20



DETAIL EA
S-20



DETAIL X
S-20

SECTION E
S-20