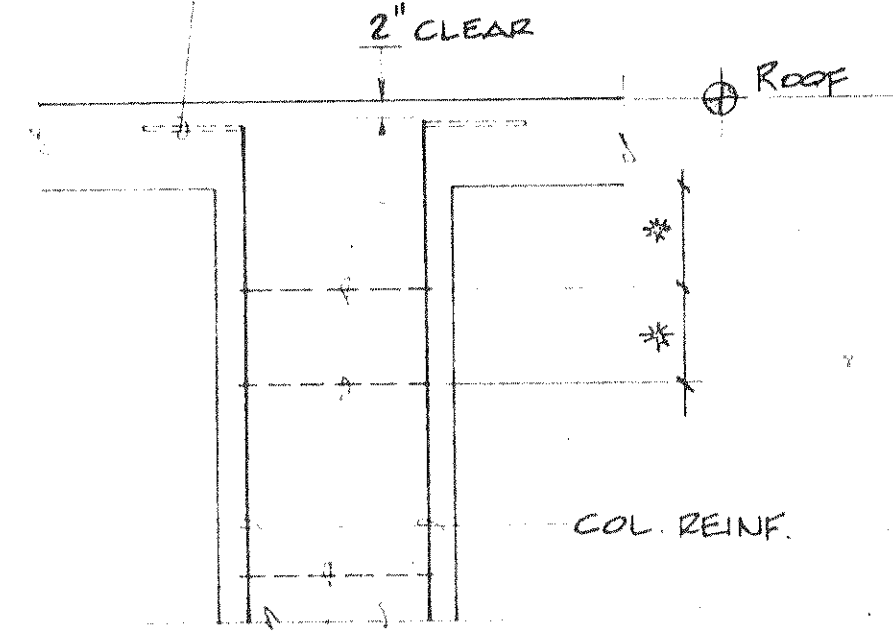


HOOK COLUMN BARS AT EXTERIOR COLS. ONLY



TIES  
TYP. COLUMN AT ROOF

**TABLE "T"**  
TENSION SPLICES

MINIMUM CLASS "C" TENSION SPLICES FOR TIED COLUMNS

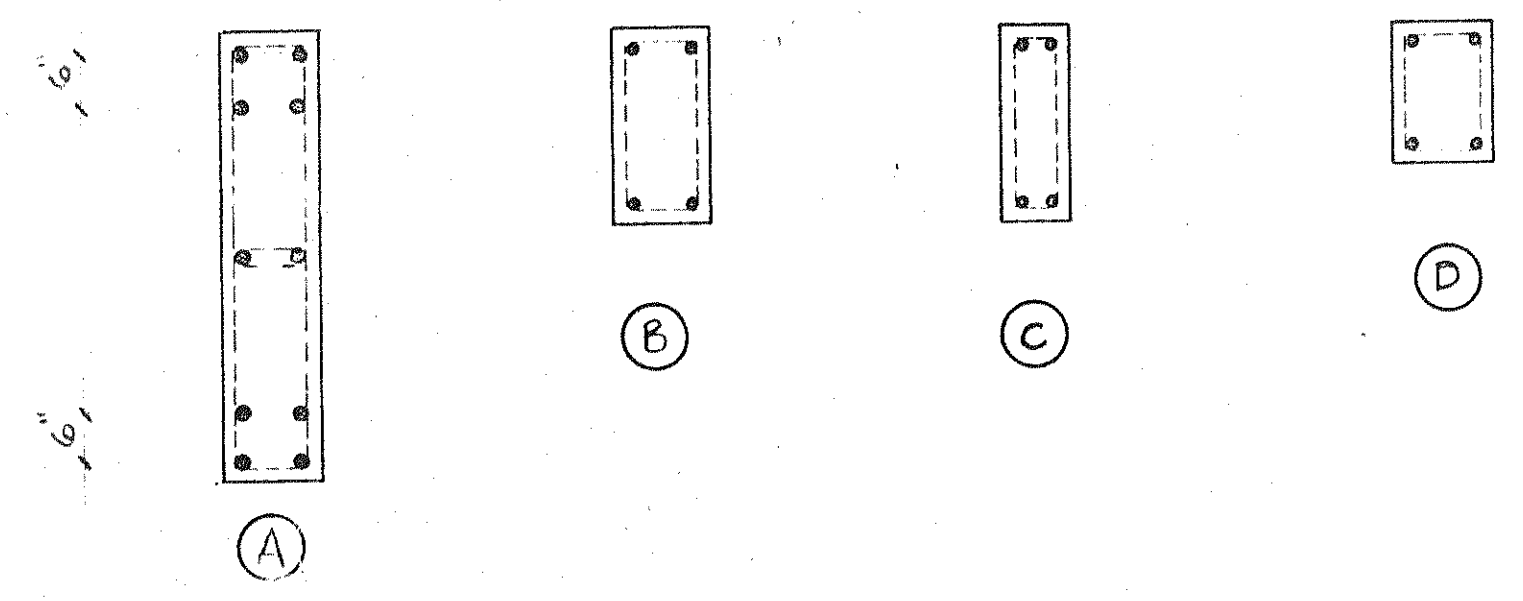
| BAR SIZE | LAP IN INCHES |
|----------|---------------|
| # 5      | 26"           |
| # 6      | 31"           |
| # 7      | 39"           |
| # 8      | 51"           |
| # 9      | 65"           |

**TABLE "C"**  
COMPRESSION SPLICES

MINIMUM LAPPED SPLICE LENGTHS FOR TIED COLUMNS

| BAR SIZE | LAP IN INCHES |
|----------|---------------|
| # 5      | 16"           |
| # 6      | 19"           |
| # 7      | 22"           |
| # 8      | 25"           |
| # 9      | 28"           |

TYPICAL SPLICE TABLE  
UNLESS NOTED IN SCHEDULE



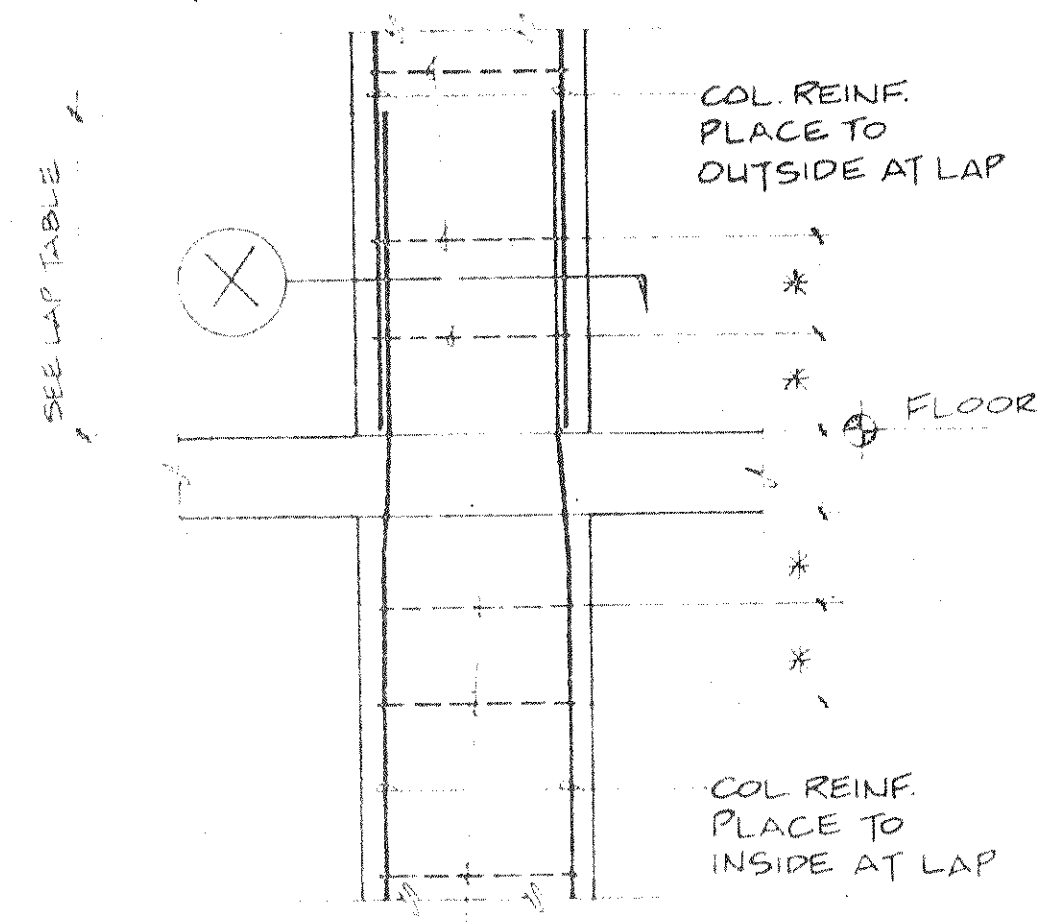
COLUMN BAR PATTERN TYPES

○ INDICATES BAR TO BE PLACED TO OUTSIDE OF SPLICE

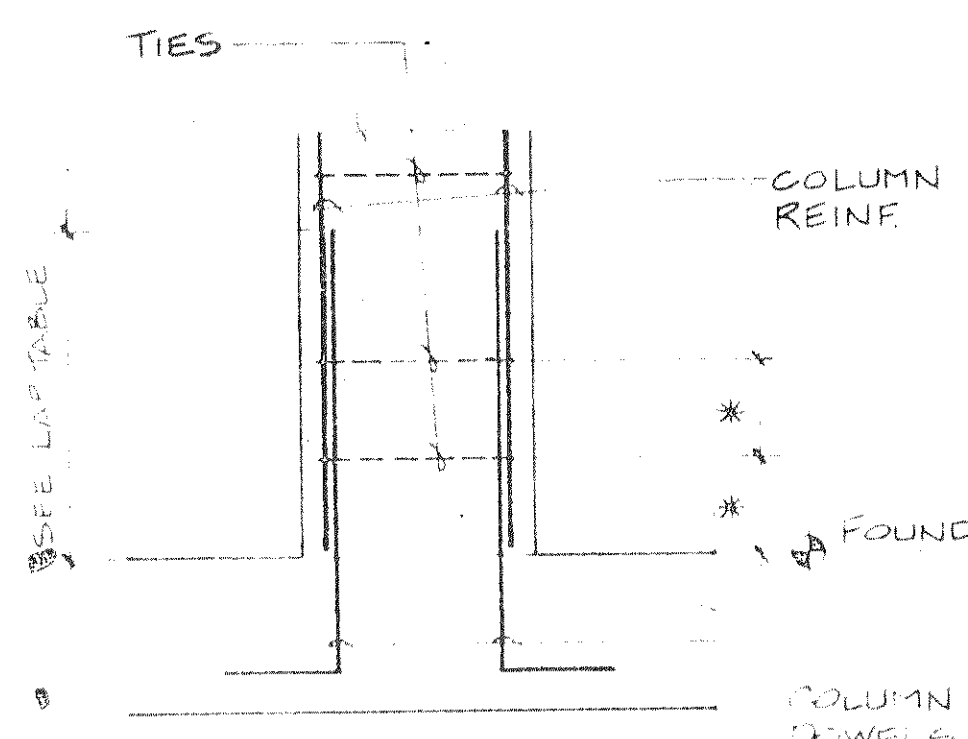
○ INDICATES BARS TO BE PLACED TO THE INSIDE OF SPLICE

NOTE: BARS TO LAP IN LONG DIRECTION OF COLUMN AS SHOWN.

SECTION (X) COLUMN @ FLR. SPLICE



TIES  
TYP. COLUMN AT FLOOR

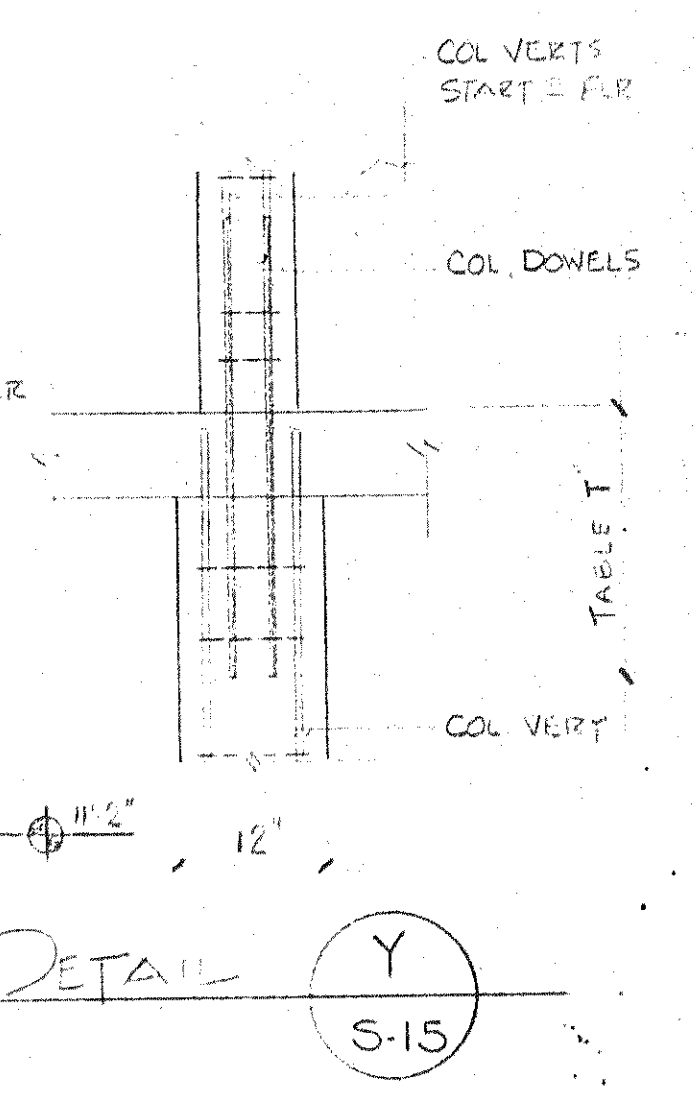


TYP. COLUMN AT FOUND.

\* INDICATES 2 TIE SPACING LISTED.

**COLUMN NOTES:**  
CONCRETE STRENGTH = 4000 P.S.I.  
REINF STEEL GRADE = A615-60  
LAP = SEE TABLES

| LEVEL         | C-2  | C-4  | C-1  | A-1  | A-3  | B-16 | B-4  | E-1 | J-4  | J-3  | E-2  | G-8 | L-3  | L-2  | N-5 | O-11 | L-16 | L-14.3 | M-14.1 |
|---------------|------|------|------|------|------|------|------|-----|------|------|------|-----|------|------|-----|------|------|--------|--------|
| STAIR ROOF    | C-16 | C-6  | C-10 | A-2  | A-13 | B-17 | B-6  | F-1 | J-10 | J-13 | D-4  | G-9 | L-12 | M-2  | N-7 | O-13 | M-16 | L-14.4 | M-14.1 |
| ELEVATOR ROOF | C-17 | C-10 | C-1  | A-4  | A-13 | B-2  | B-10 | H-1 | J-16 | J-13 | D-6  | I-8 | L-12 | M-3  | N-7 | O-15 | M-16 | L-14.3 | M-14.1 |
| Roof          |      |      |      | A-6  | A-13 | B-2  | B-10 | L-4 | J-16 | J-13 | D-10 | I-9 | L-12 | M-12 | N-7 | O-15 | M-16 | L-14.2 | M-14.1 |
| 5th Floor     |      |      |      | A-10 | A-13 | B-2  | B-10 | L-6 | J-16 | J-13 | E-16 | I-9 | L-14 | M-14 | N-7 | O-15 | M-16 | L-14.2 | M-14.1 |
| 4th Floor     | 4-#6 | 4-#6 | 4-#6 | A-16 | A-13 | B-2  | B-10 | L-6 | J-16 | J-13 | E-17 | I-9 | L-14 | M-14 | N-7 | O-15 | M-16 | L-14.2 | M-14.1 |
| 3rd Floor     |      |      |      | A-17 | A-13 | B-2  | B-10 | L-6 | J-16 | J-13 | E-17 | I-9 | L-14 | M-14 | N-7 | O-15 | M-16 | L-14.2 | M-14.1 |
| 2nd Floor     |      |      |      | A-17 | A-13 | B-2  | B-10 | L-6 | J-16 | J-13 | E-17 | I-9 | L-14 | M-14 | N-7 | O-15 | M-16 | L-14.2 | M-14.1 |
| 1st Floor     |      |      |      | A-17 | A-13 | B-2  | B-10 | L-6 | J-16 | J-13 | E-17 | I-9 | L-14 | M-14 | N-7 | O-15 | M-16 | L-14.2 | M-14.1 |
| GROUND FLR    |      |      |      | A-17 | A-13 | B-2  | B-10 | L-6 | J-16 | J-13 | E-17 | I-9 | L-14 | M-14 | N-7 | O-15 | M-16 | L-14.2 | M-14.1 |
| FOUND.        |      |      |      | A-17 | A-13 | B-2  | B-10 | L-6 | J-16 | J-13 | E-17 | I-9 | L-14 | M-14 | N-7 | O-15 | M-16 | L-14.2 | M-14.1 |



COLUMN SCHEDULE

**SUNSET BEACH BOAT KEY**  
 BUILDING # 2  
 COLUMN SCHEDULE  
 ISSUED 12-10-82  
 REVISED 1-4-83  
 SHEET S.15 OF 24  
 ARVIDA CORPORATION EDWARD J. SEIBERT AIA ARCHITECT & PLANNER PA THE SWA GROUP  
 BENNETT & BISHOP INC CONSULTING ENGINEERS & SURVEYORS  
 GLEN WHITE & ASSOCIATES STRUCTURAL ENGINEERS  
 BRADHAM KUHN DEBAY CONSULTING ENGINEERS