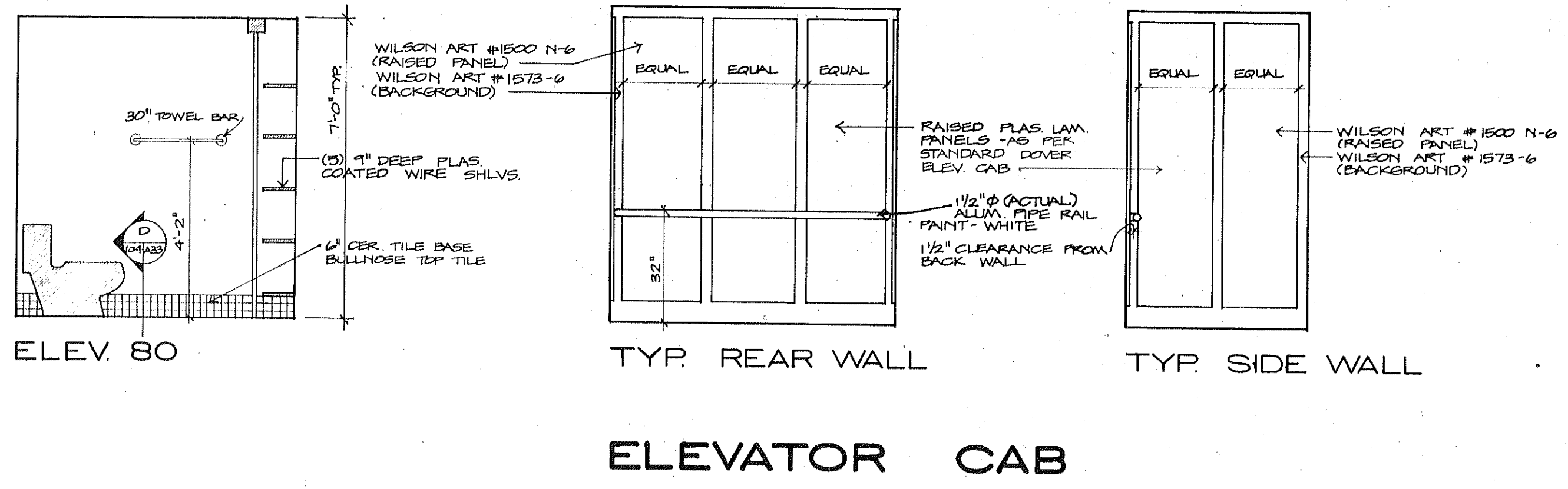
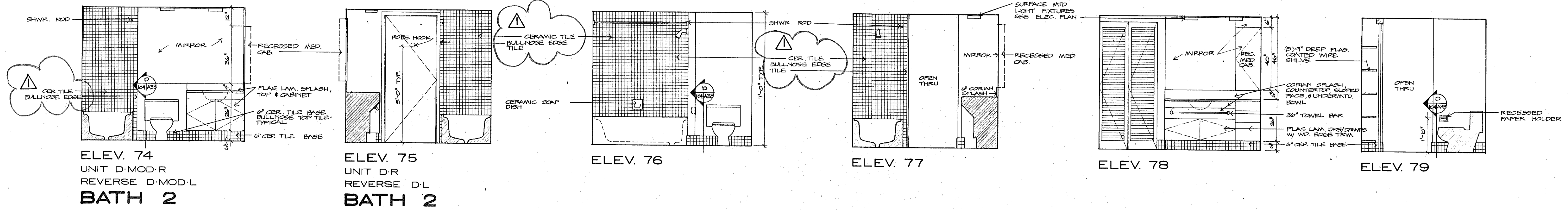


NOTES:
 1. MEDICINE CABINETS TO BE BUILT IN W/ MIRROR FACE
 2. ALLOW FOR MARBLE SILL BETWEEN CERAMIC TILE & CARPET



INTERIOR ELEVATIONS 3/8" = 1'-0"
 ISSUED 10 DEC 82
 REVISED 4-1-83
 SHEET A 33 OF 37
 SUNSET BEACH BOAT KEY
 OF LONG BEACH, CALIF.
 ARVIDA CORPORATION, EDWARD J. SEBERT, AIA, ARCHITECT & PLANNER, P.A., THE SWA GROUP
 BRAHAM, KUHN, DEBAY CONSULTING ENGINEERS, OLSEN, WHITE & ASSOCIATES, STRUCTURAL ENGINEERS, BENNETT & BISHOP, INC. CONSULTING ENGINEERS & SURVEYORS