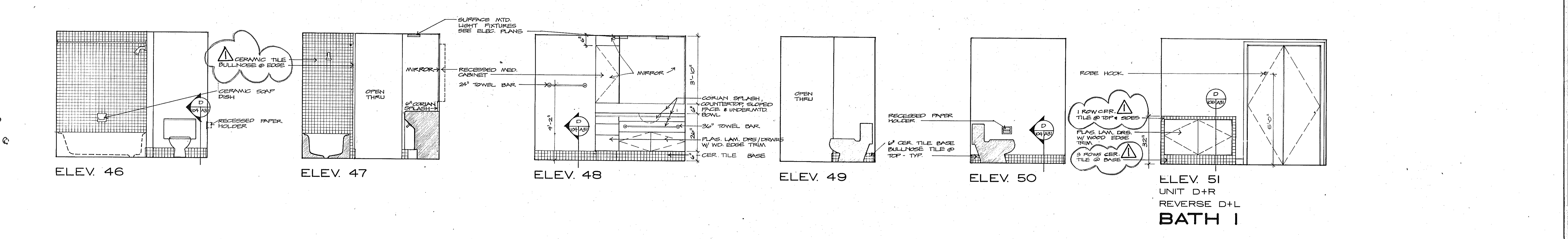
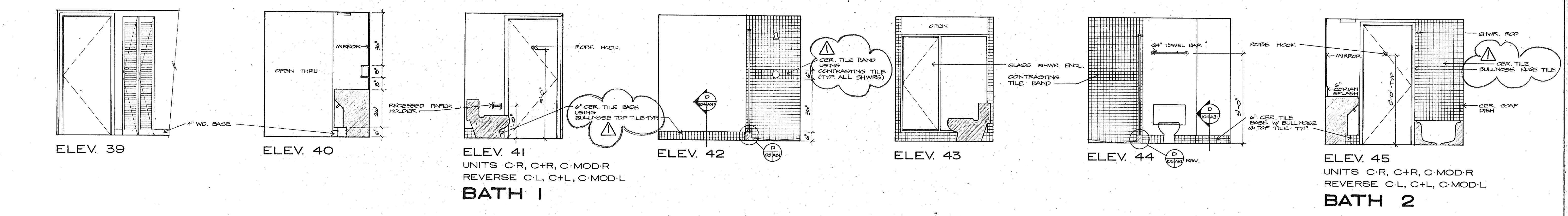
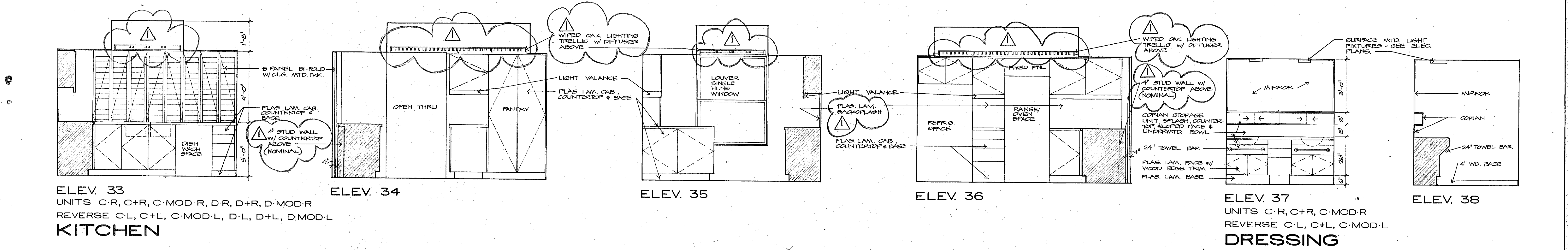
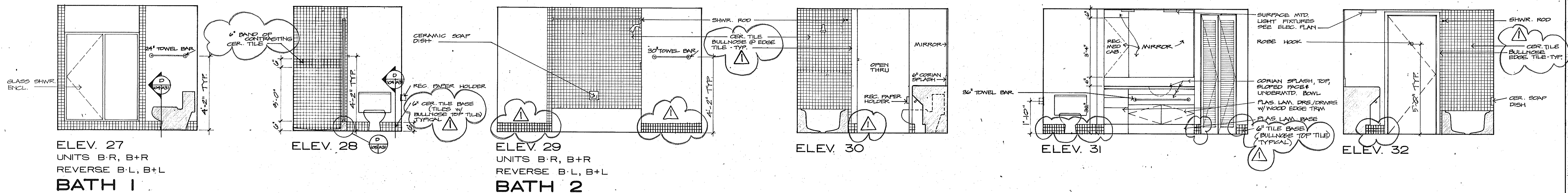


NOTES:

1. SEE (D) FOR KITCHEN CABINET WOOD TRIM & PULLS
2. VERIFY CABINET OPENINGS W/ APPLIANCES PRIOR TO FABRICATION
3. MEDICINE CABINETS TO BE BUILT IN W/ MIRROR FACE
4. ALLOW FOR MARBLE SILL BETWEEN CERAMIC TILE & CARPET



SUNSET BEACH
 OF LONGBOAT KEY
 INTERIOR ELEVATIONS 3/8" = 1'-0"
 ISSUED 10 DEC. 82
 REVISED 4-1-83
 SHEET A-31 OF 37
 ARVIDA CORPORATION · EDWARD J. SEBERT, AIA ARCHITECT & PLANNER, P.A. · THE SWA GROUP
 BRABHAM, KUHNS, DEBAY, CONSULTING ENGINEERS · OLSEN, WHITE & ASSOCIATES, STRUCTURAL ENGINEERS · BENNETT & BISHOP, INC. CONSULTING ENGINEERS & SURVEYORS