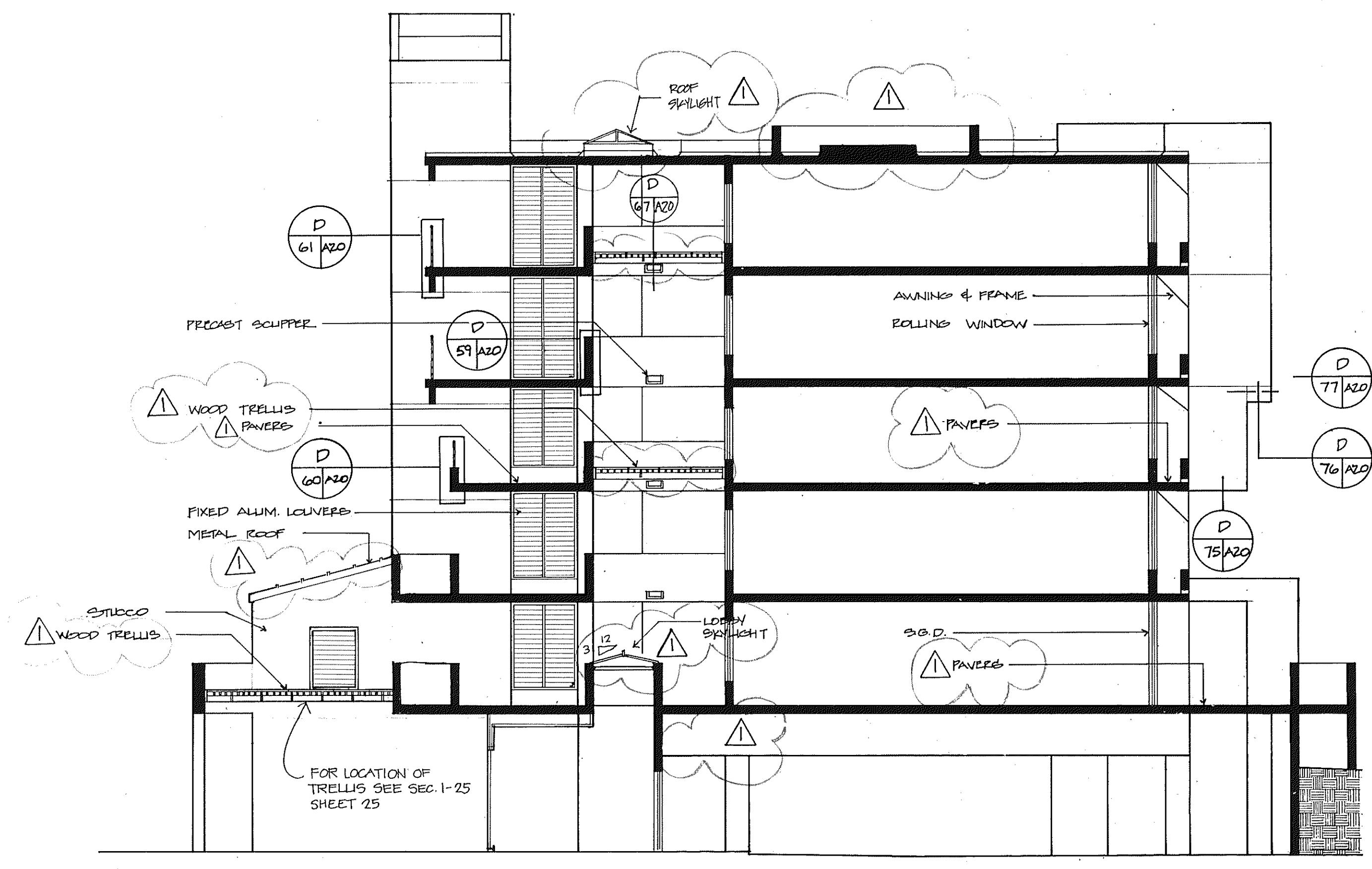
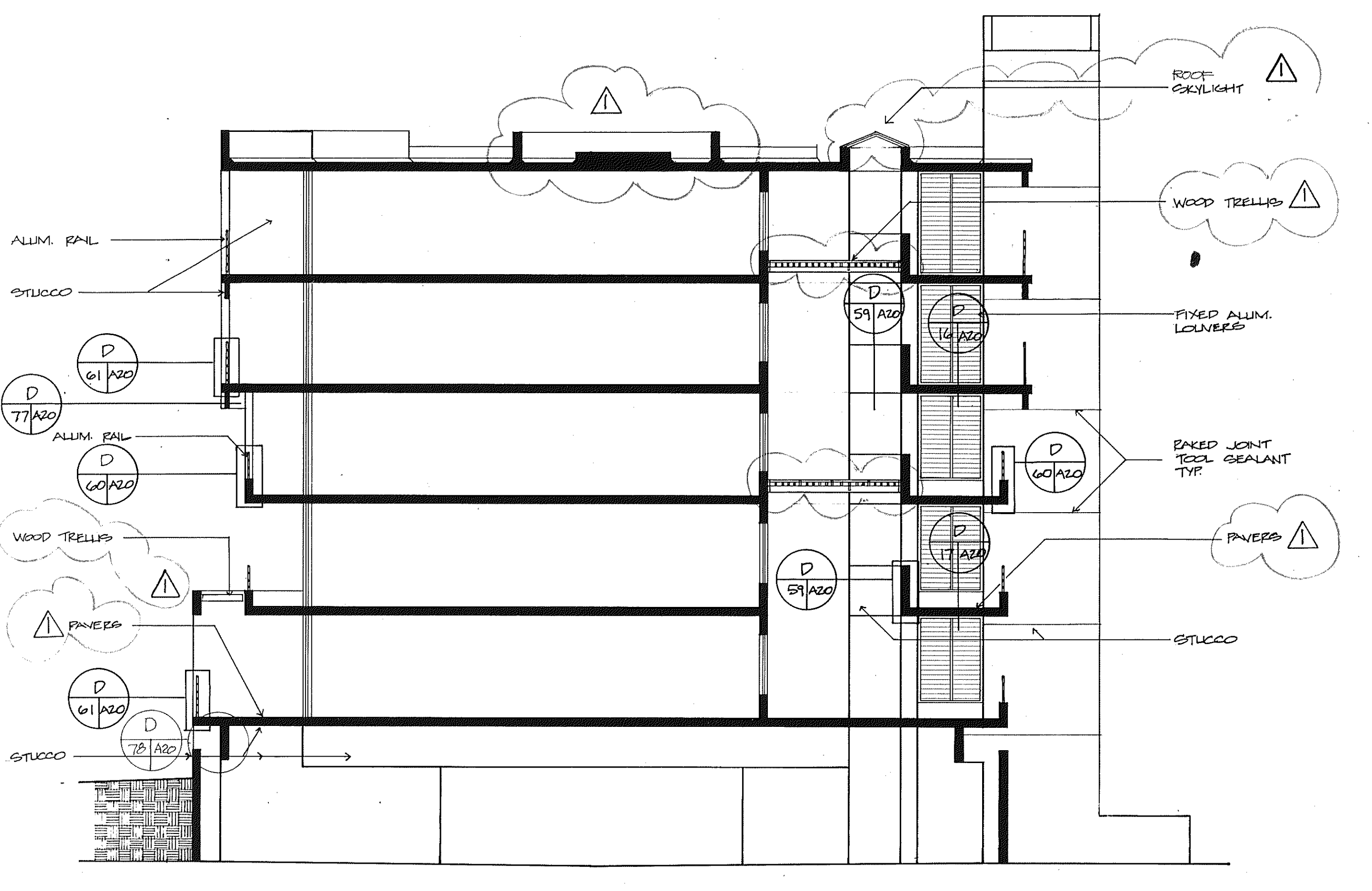
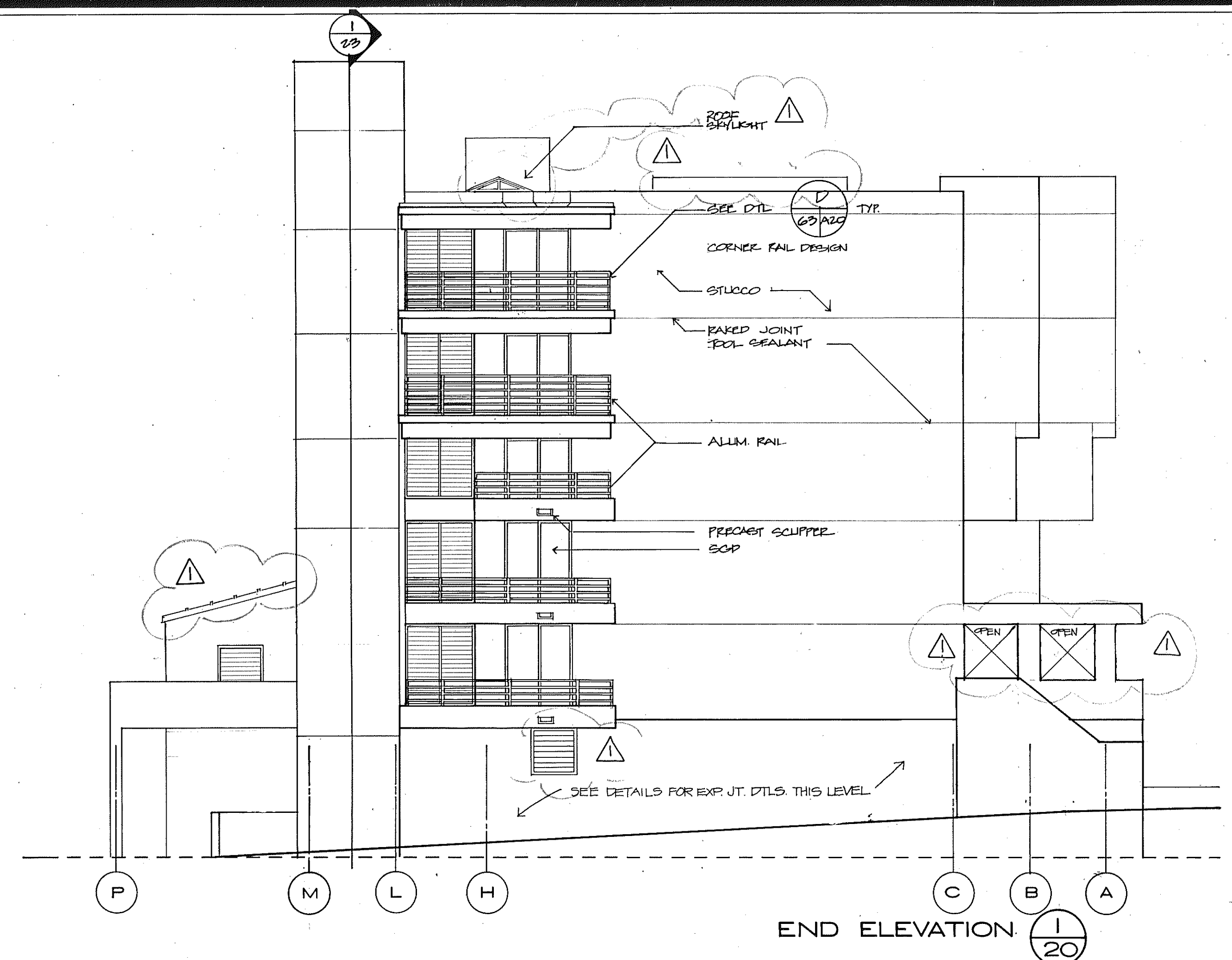


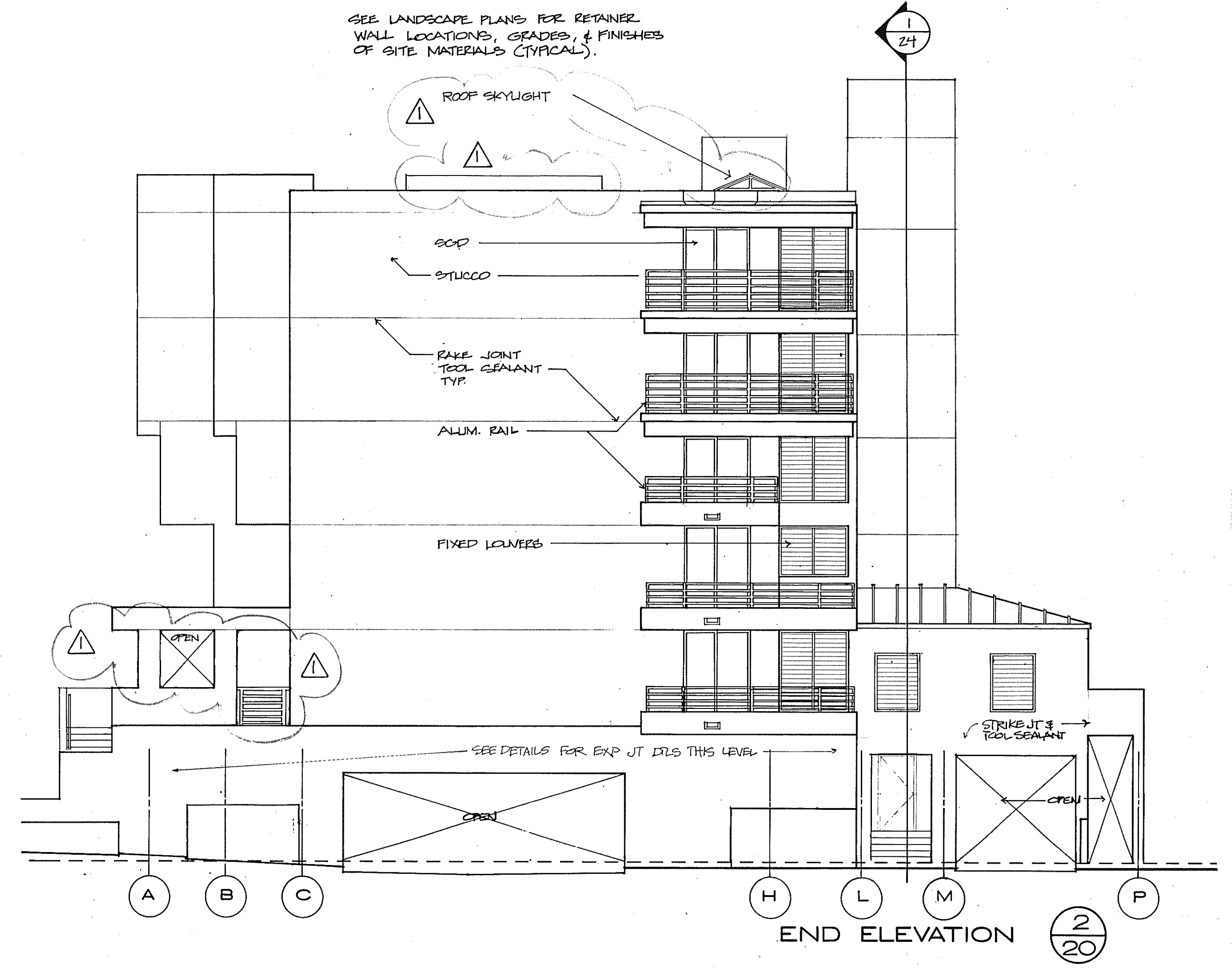
OVERLAYS
 1
 2
 3
 4
 5
 6
 7
 8
 9
 10
 11
 12
 13
 14
 15
 16
 17
 18
 19
 20
 21
 22
 23
 24
 25
 26
 27
 28
 29
 30
 31
 32
 33
 34
 35
 36
 37
 38
 39
 40
 41
 42
 43
 44
 45
 46
 47
 48
 49
 50
 51
 52
 53
 54
 55
 56
 57
 58
 59
 60
 61
 62
 63
 64
 65
 66
 67
 68
 69
 70
 71
 72
 73
 74
 75
 76
 77
 78
 79
 80
 81
 82
 83
 84
 85
 86
 87
 88
 89
 90
 91
 92
 93
 94
 95
 96
 97
 98
 99
 100



- TOP OF PARAPET EL. 60'-2"
- ROOF SLAB EL. 58'-10"
- FIFTH FLOOR EL. 44'-6"
- FOURTH FLOOR EL. 40'-2"
- THIRD FLOOR EL. 30'-10"
- SECOND FLOOR EL. 21'-6"
- FIRST FLOOR EL. 12'-2"
- TOP OF WALL EL. 9'-6"
- GROUND FLOOR EL. 0'-0"



- TOP OF PARAPET EL. 60'-2"
- ROOF SLAB EL. 58'-10"
- FIFTH FLOOR EL. 44'-6"
- FOURTH FLOOR EL. 40'-2"
- THIRD FLOOR EL. 30'-10"
- SECOND FLOOR EL. 21'-6"
- FIRST FLOOR EL. 12'-2"
- TOP OF WALL EL. 9'-6"
- GROUND FLOOR EL. 0'-0"



SUNSET BEACH
 SOF LONG BOAT KEY
 BUILDING 2 ELEVATIONS & SECTIONS 1/8" = 1'-0"
 ARVDA CORPORATION EDWARD J. SEBERT AIA ARCHITECT & PLANNER PA THE SWA GROUP
 BRADHAM KUHNIS DEBAY CONSULTING ENGINEERS OLSEN WHITE & ASSOCIATES STRUCTURAL ENGINEERS BENNETT & BISHOP INC CONSULTING ENGINEERS & SURVEYORS
 ISSUED 10 DEC. 82
 REVISED 4-1-83
 SHEET A-20 OF 37