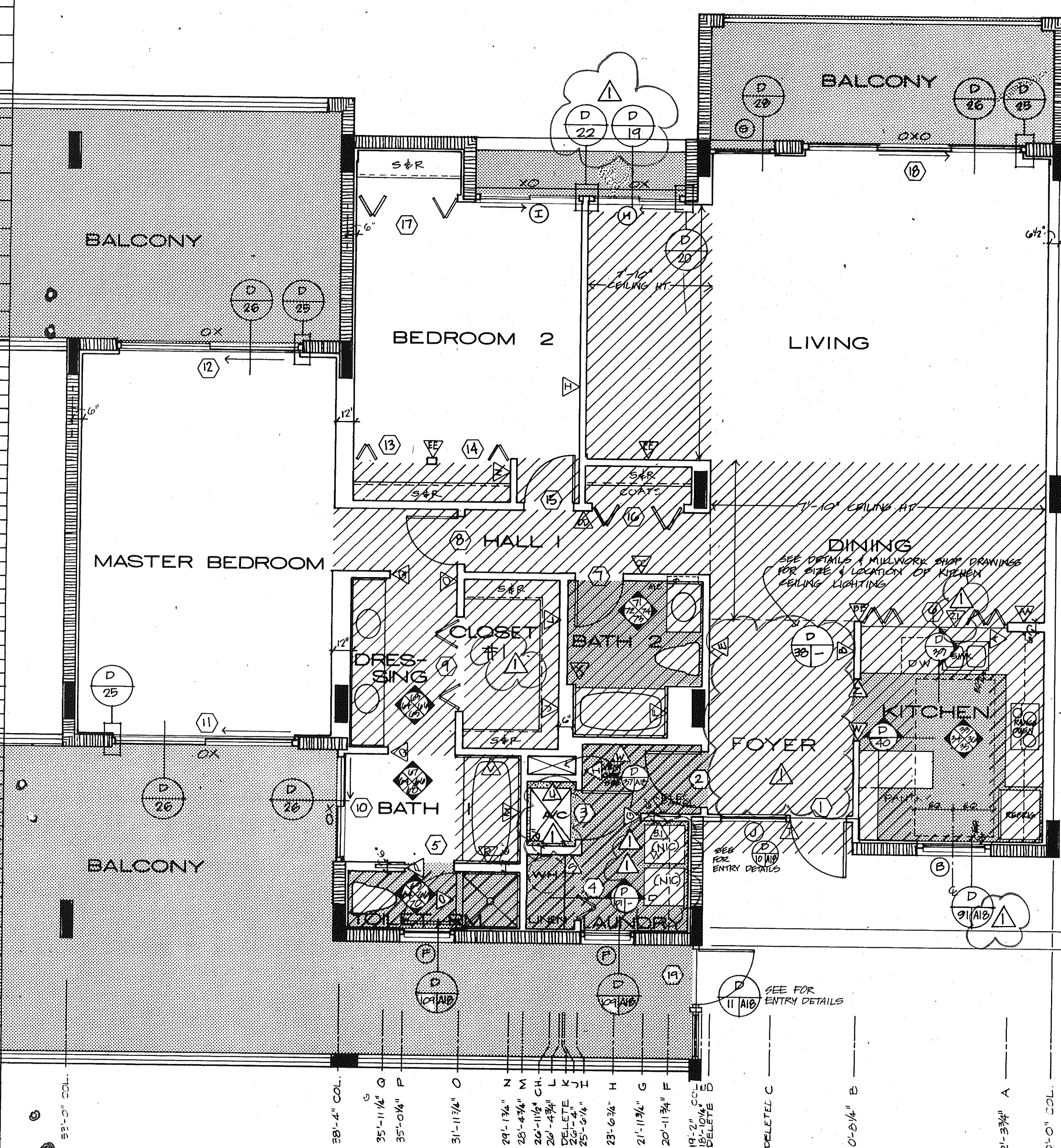


43
44
45
48
49

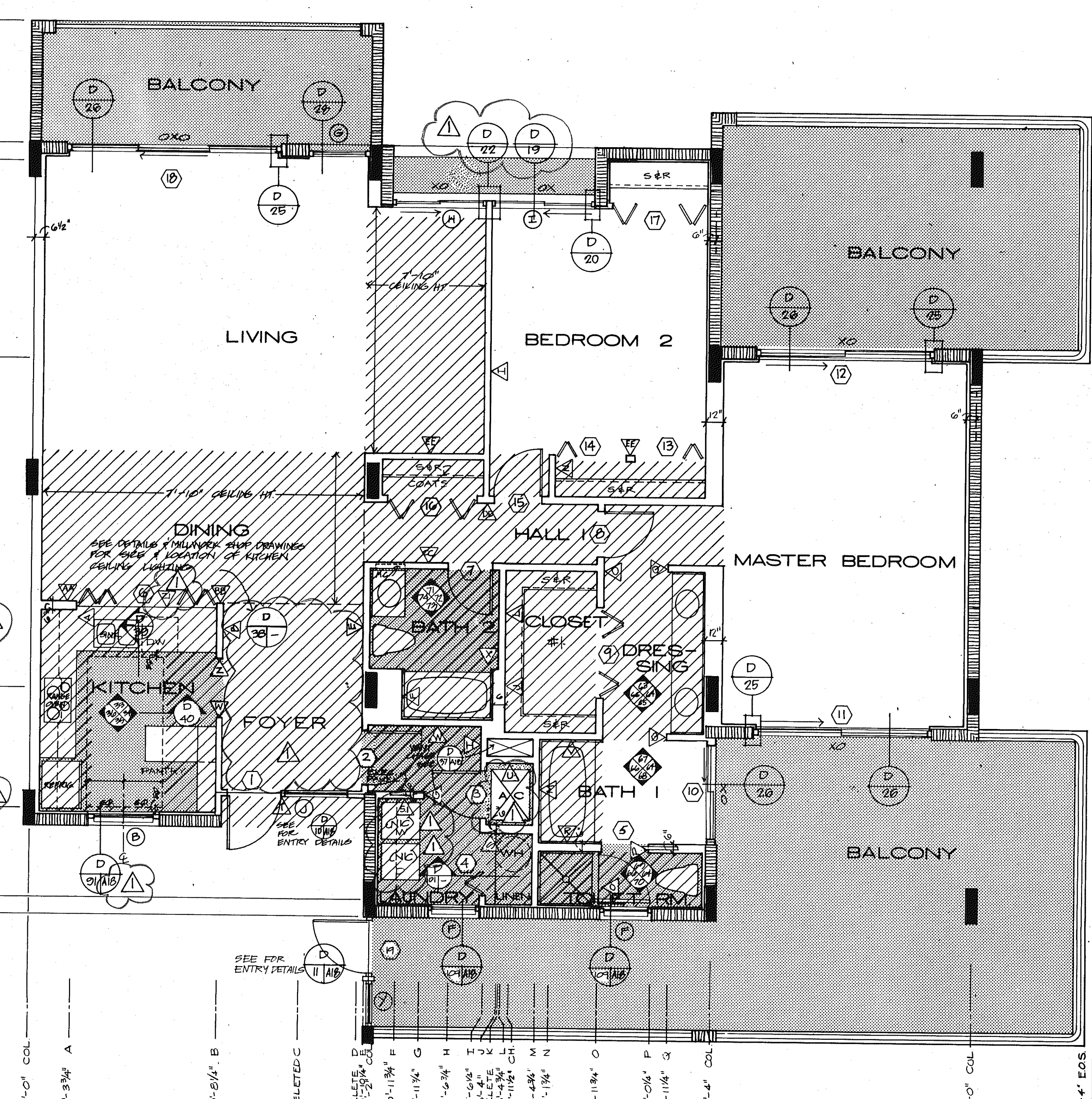
UNIT D MOD. LEFT



38'-4" COL.
35'-11 1/2" G
35'-0 1/4" P
31'-11 3/4" O
29'-1 1/4" N
25'-5 3/4" M
20'-11 1/4" CH
20'-4 3/4" L
DELETE
25'-5 1/4" K
23'-6 3/4" H
21'-11 3/4" G
20'-11 3/4" F
19'-2 1/4" COL.
DELETE
DELETE C
10'-8 1/4" B
2'-3 3/4" A
0'-0" COL.

E.O.S. 50'-6"
F.O.W. 42'-9"
COL. 42'-9"
COL. 31'-6"
EE 26'-0 3/4"
COL. 24'-8"
DD 23'-2 1/4"
CC 19'-10 1/2"
BB 17'-6"
AA 17'-5 1/4"
Z 1 17'-2"
Z 14'-0 1/2"
Y DELETE
X 13'-10 1/2"
COL. 12'-10"
W 11'-0"
V 10'-4 1/4"
CH. 9'-6 3/4"
U 8'-9 1/4"
COL. 1'-0"
F.O.W. 0'-0"

UNIT D MOD. RIGHT



0'-0" COL.
2'-3 3/4" A
10'-8 1/4" B
DELETED C
DELETE
18'-2 1/4" COL.
20'-1-11 3/4" F
21'-11 3/4" G
23'-0 3/4" H
25'-0 1/4" I
26'-4" J
DELETE
20'-4 3/4" K
20'-11 1/2" CH
22'-4 3/4" L
29'-1 1/4" M
31'-11 3/4" N
35'-0 1/4" P
35'-11 1/4" Q
38'-4" COL.
59'-4" E.O.S.

NOTES:
1. SEE 1/8" BLDG PLANS FOR COLUMN & SHEAR WALL LOCATIONS
2. ALL DROPPED CEILINGS ARE 7'-0" UNLESS OTHERWISE NOTED
3. ALL DIMENSIONS ARE FROM CENTERLINE OF WALL
4. SEE DETAIL BOOKLET FOR DOOR, WINDOW & FINISH SCHEDULES
5. SCREEN DOT TEXTURE INDICATES FINISH SCHEDULES
6. VERIFY EXACT LOCATION OF L.A.V. ARCHITECT
7. DASHED LINE ABOVE THE WASHER/DRYER IS A
CONTINUOUS UPPER CABINET W/ DOORS. CONSTRUCTION IS TO BE PER THE KITCHEN UPPER CABINETS EXCEPT DELETE ALL W.P. TRIM. PULLS TO BE RECESSED OAK.

8. SEE SHEET A-9 FOR PLAN DIMENSIONING KEY.

ISSUED
10 DEC. 82

REVISED
4-1-83

SHEET

A-18

OF 37