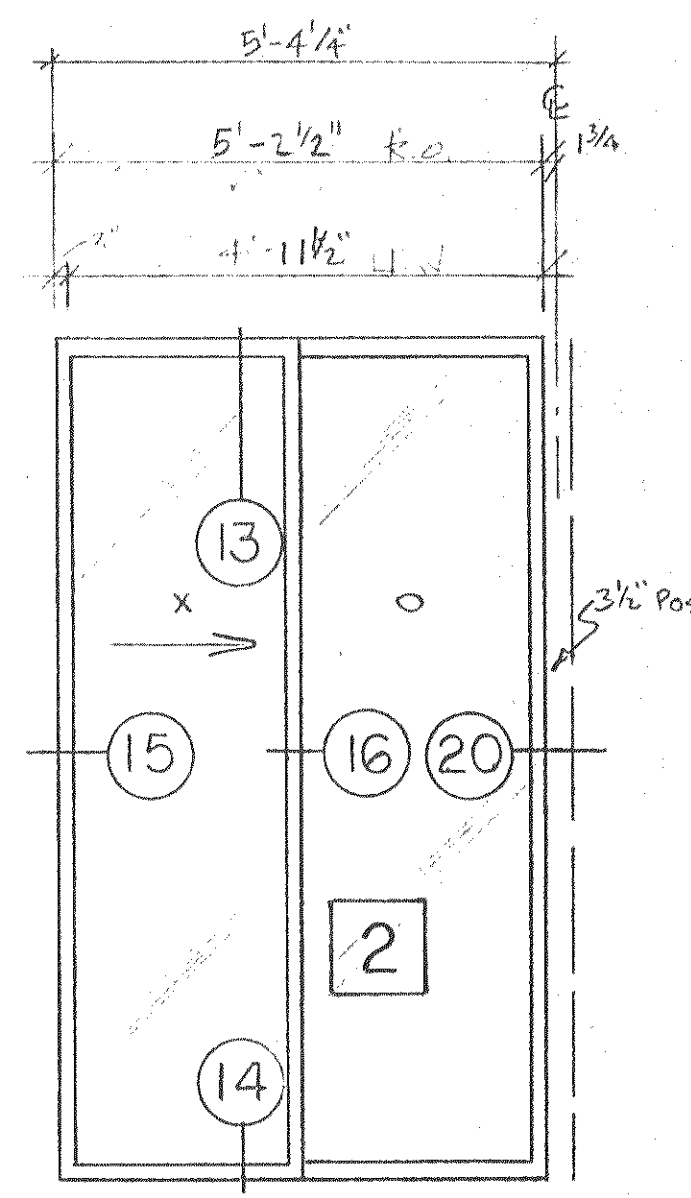


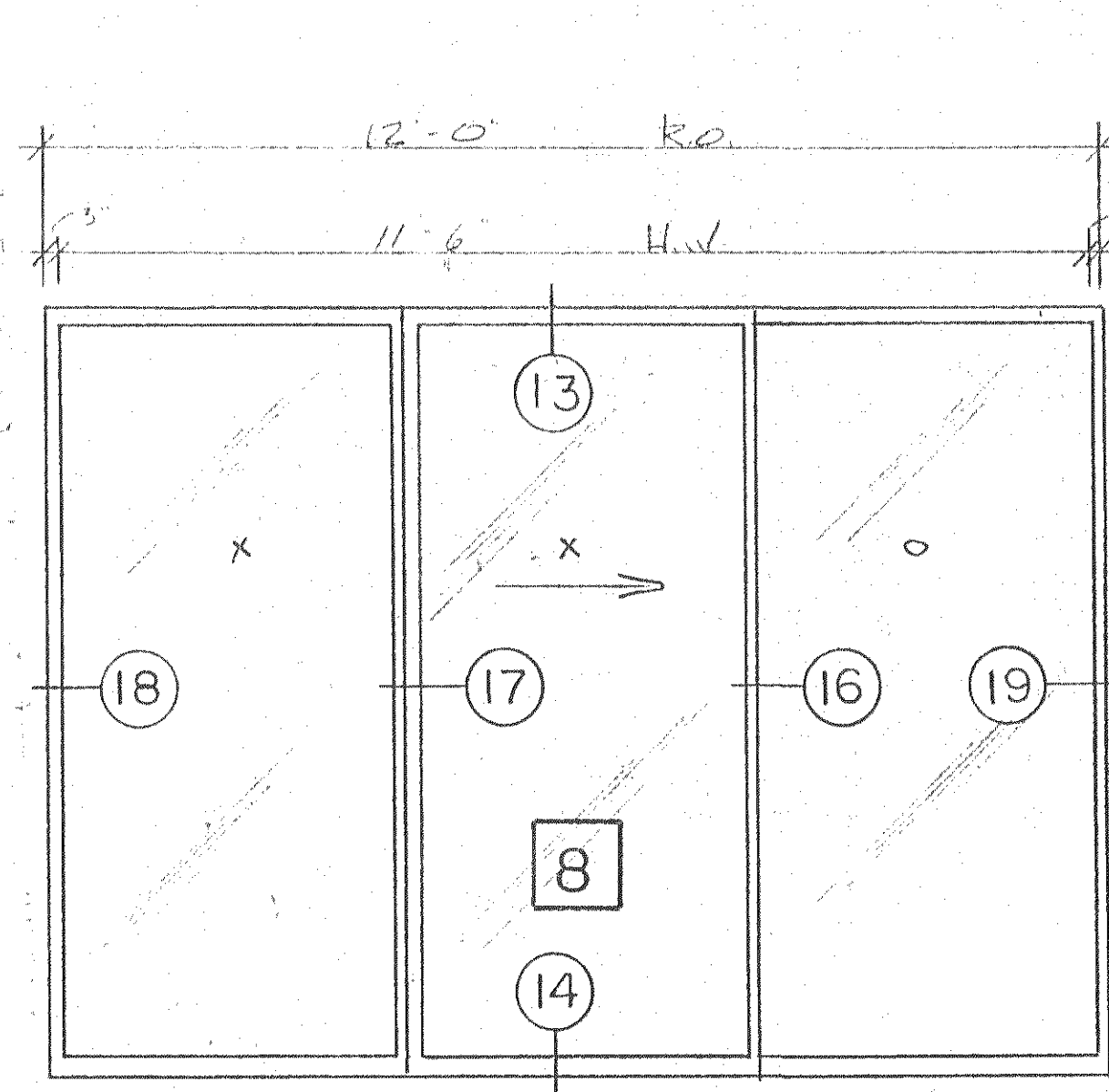
MARK 20-D 350 SERIES

[B] [20] O XO → 3
 [BR] [20] Rev O XO ← 3



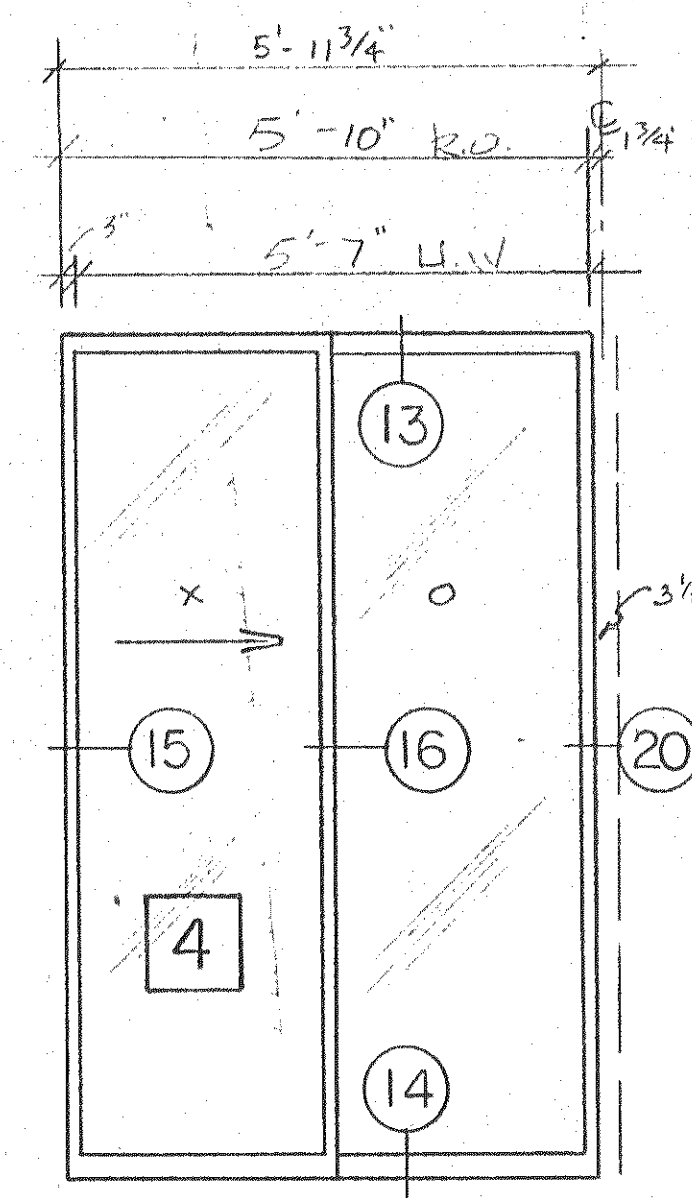
MARK 20-D+ 350 SERIES

[2] [20] D+ XO-1
 [2R] [20] D+ Rev OX-1



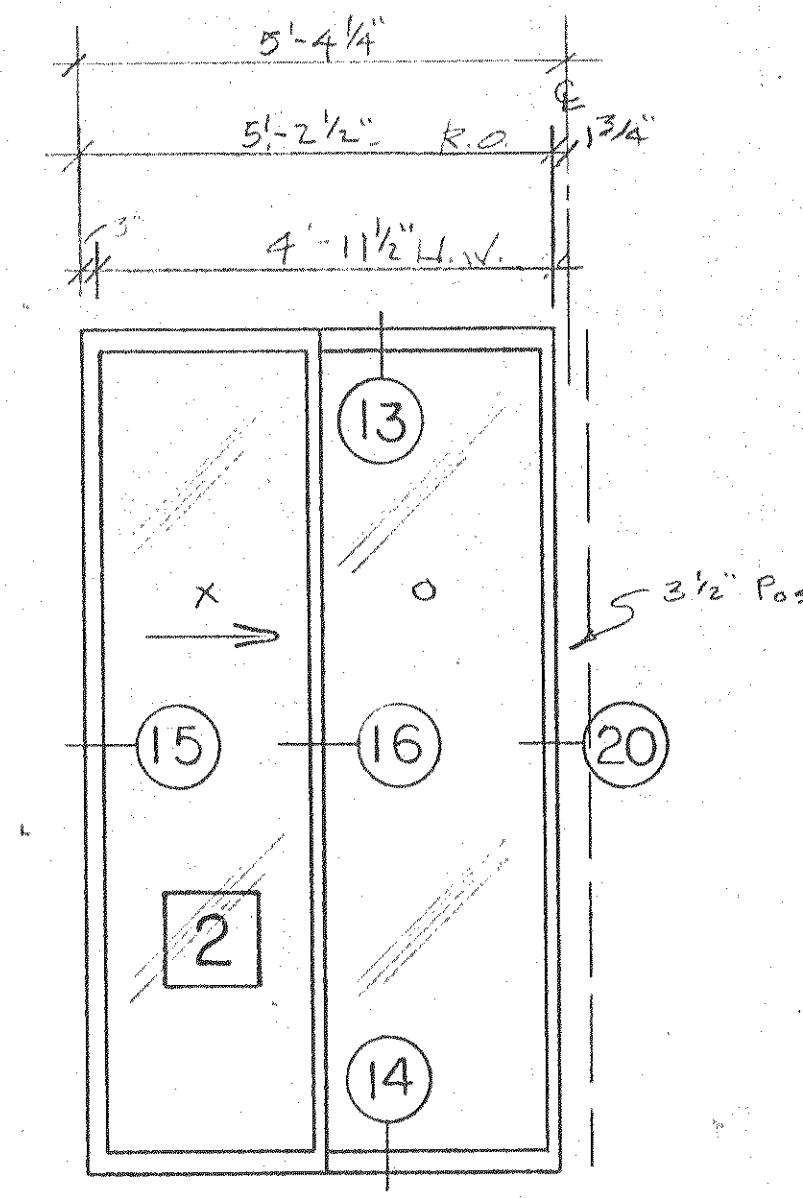
MARK 21 350 SERIES

[8] [21] O XO → 1
 [8R] [21] Rev. O XO ← 1



MARK 23 350 SERIES

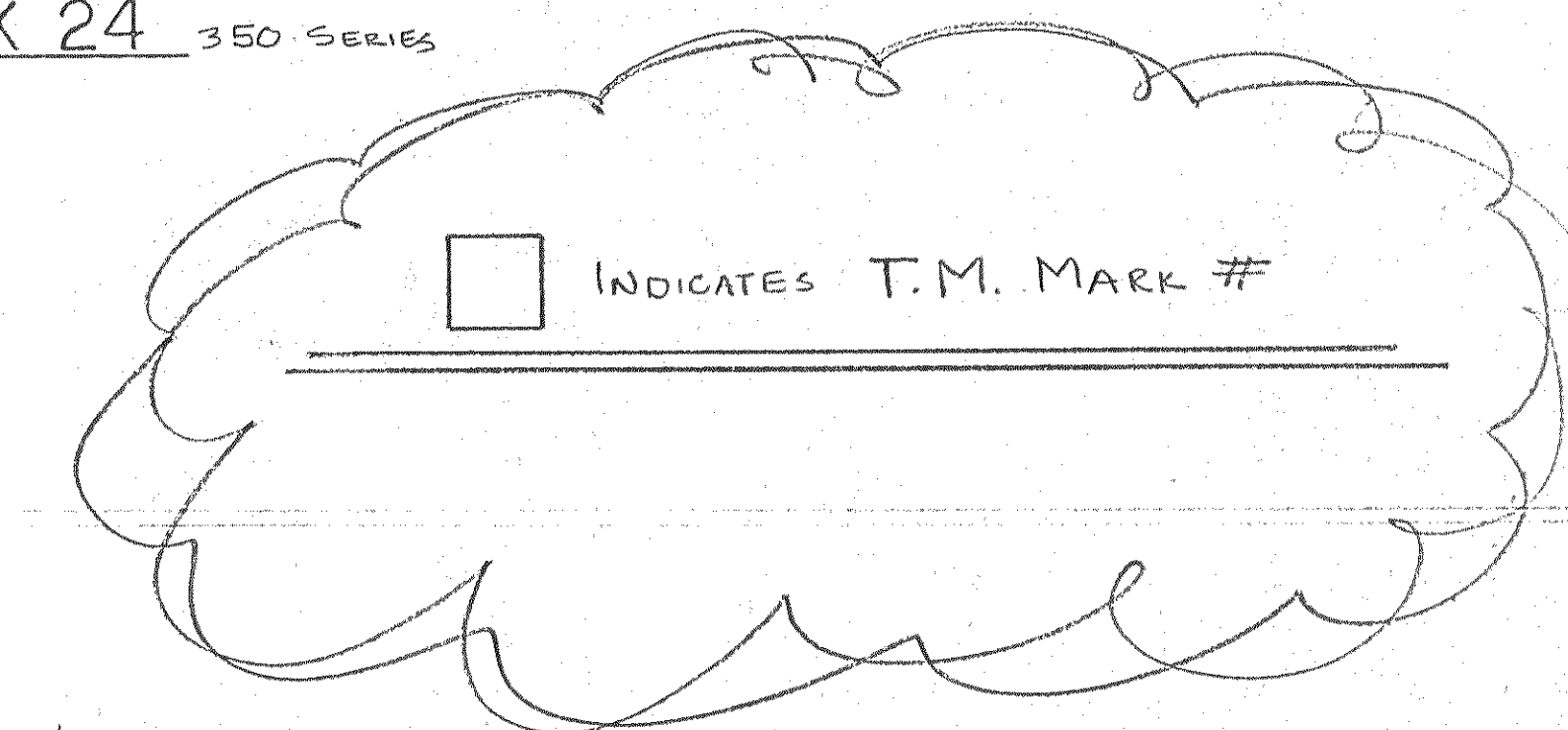
[4] [23] XO-1
 [4R] [23] Rev OX-1



MARK 24 350 SERIES

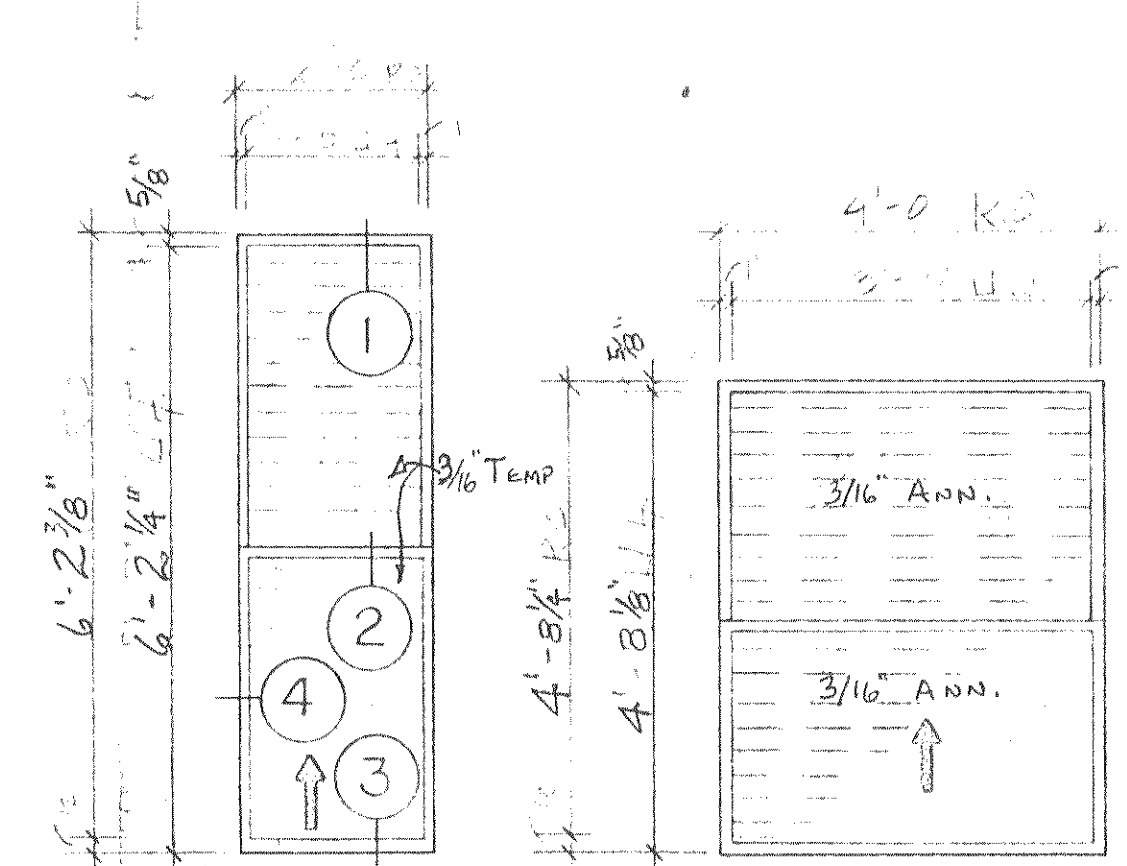
[2] [24] XO-1
 [2R] [24] Rev OX-1

"As Built
Drawing"



SERIES 350 SLIDING GLASS DOORS — SEE SHEET 10 FOR GENERAL NOTES

HANDICAPPED WINDOWS



MARK AH

QTY. ✓ 20

SERIES 160

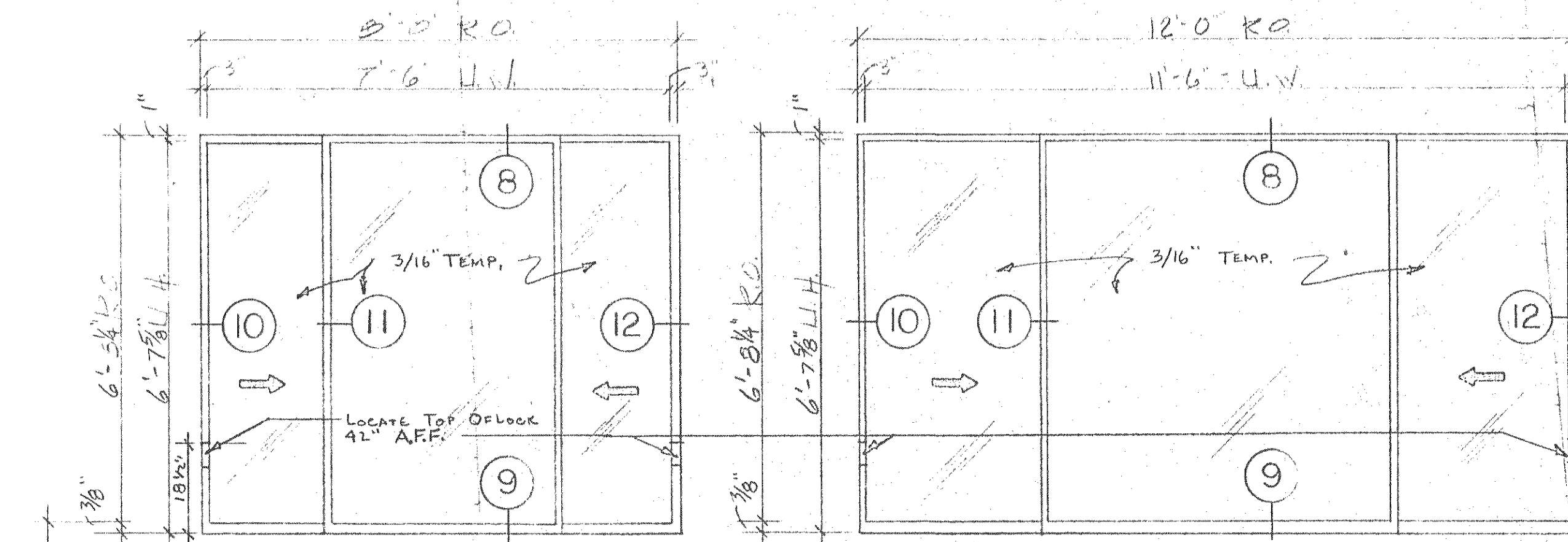
DOUBLE OPERATOR
FOR LOUVERS

MARK BH

QTY. ✓ 20

SERIES 160

SINGLE OPERATOR
FOR LOUVERS



MARK D-2

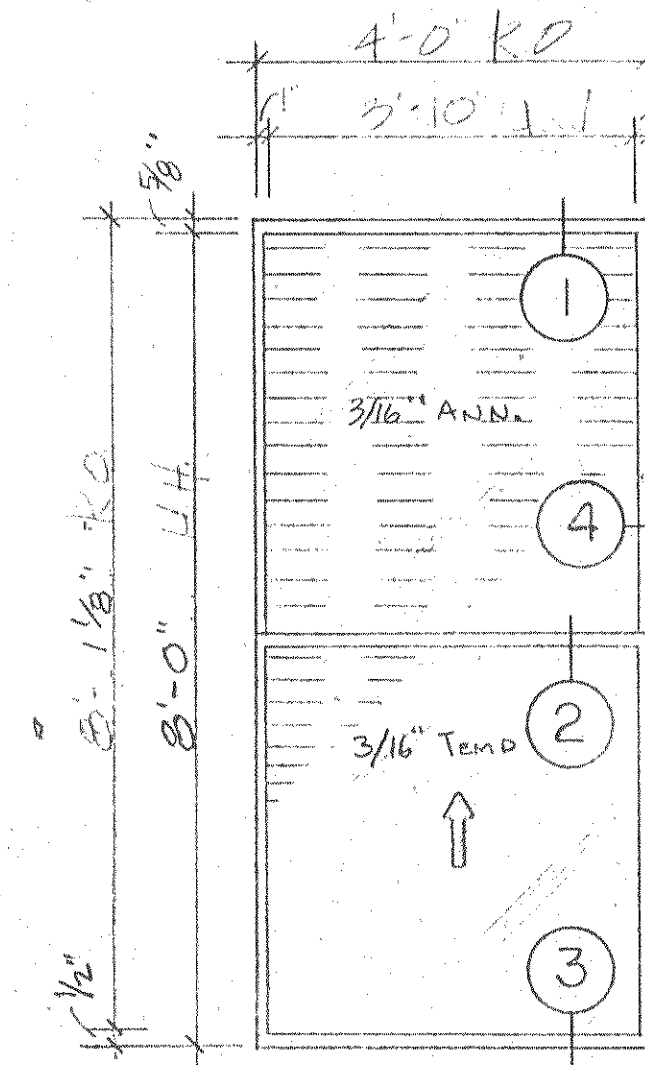
QTY. - 8

SERIES 480

MARK D-3

QTY. - 8

SERIES 480



MARK V

QTY. - 40

SERIES 160

SINGLE OPERATOR
FOR LOUVERS

GENERAL NOTES:

SERIES 160 LOUVERED SGL. HUNG WINDOW

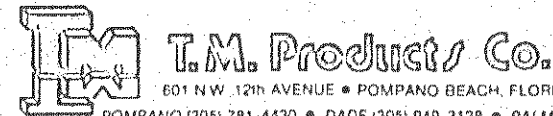
SERIES 480 HORIZONTAL ROLLING WINDOW

FINISH: MEDIUM BRONZE
 GLAZING: 3/16" ANNEALED OR TEMPERED
 SOLAR GREY AS NOTED
 SCREENS 16/18 FIBERGLAS

NOTE:

- HANDICAPPED UNITS TO GO INTO UNITS B AND B+ ONLY.
- LOCKS TO BE LOCATED WITHIN 42" ABOVE FINISHED FLOOR
- OPERATORS TO BE LOCATED WITHIN 42" ABOVE FINISHED FLOOR IN B AND B+ UNITS

SUBMISSION		REVISION			
No.	Date	No.	Description	Date	By
1		1	FOR ARCHITECTS REVISIONS	1/26/04	V.B.
2		2	UP DATE FOR ARCH.	2/10/04	R.C.



T.M. Products Co.
801 NW 12th Avenue • Pompano Beach, Florida 33062
POMPAHO (305) 781-4430 • DADE (305) 949-3128 • PALM BEACH (305) 737-4468

Project Title: **SUNSET BEACH**
LONG BOAT KEY, FLORIDA

Contractor: _____ Project No.: _____

Drawing Title: **S.G.D. ELEVATIONS**
HANDICAPPED WINDOW ELEVATIONS

Scale: 1/2" = 1'-0" Drawn By: V.B. 11-22-03 Date: 11-22-03 Sheet No.: 15 of 15