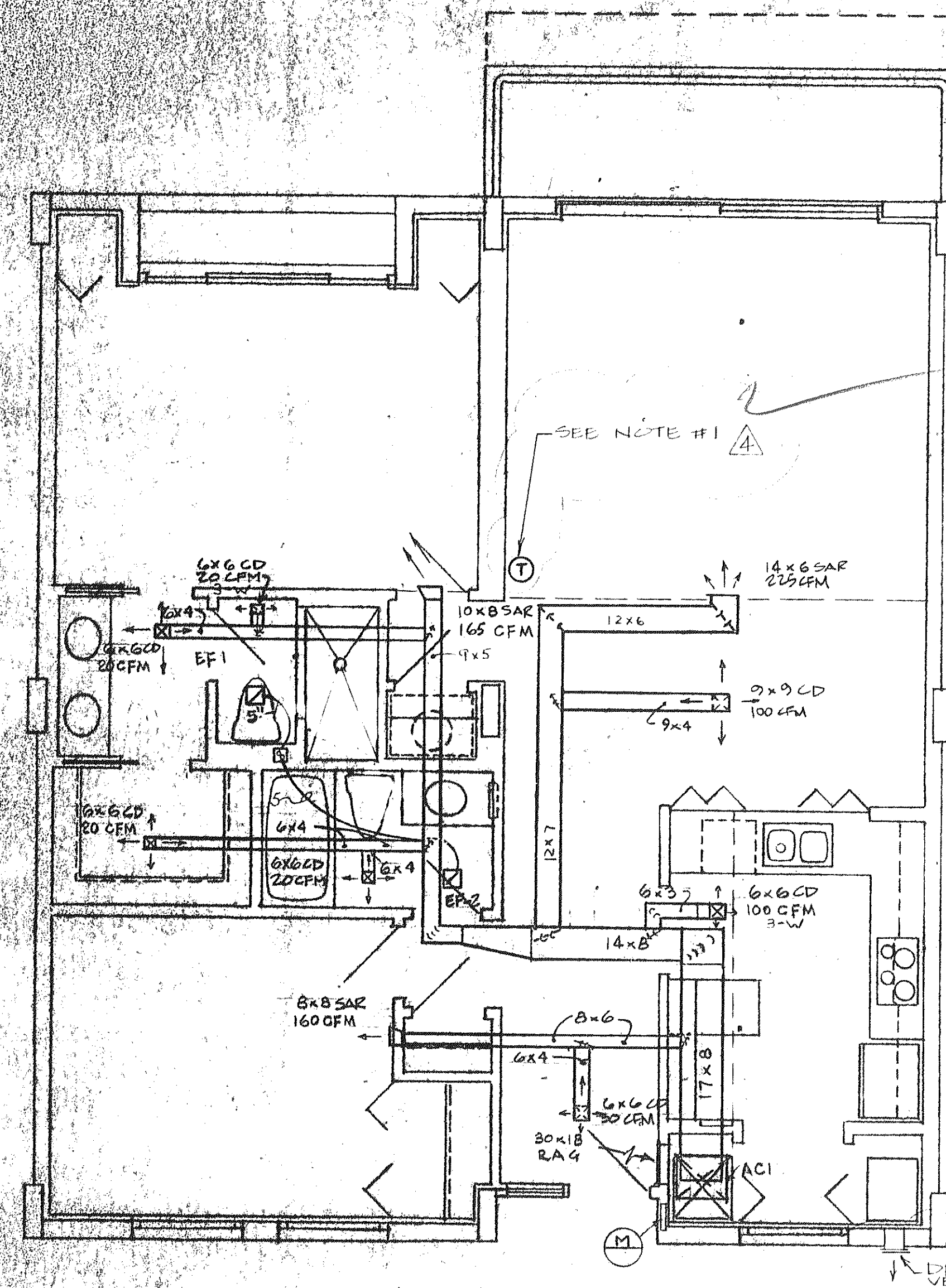


UNIT 'A' LEFT AIR CONDITIONING

20x10 1/4" x 1/4"



NOTE #1: ALL THERMOSTATS ARE TO BE MOUNTED 45" ABOVE FIN FLOOR

UNIT 'A' RIGHT AIR CONDITIONING

ISSUED
REVISED
DATE
BY
REVISION