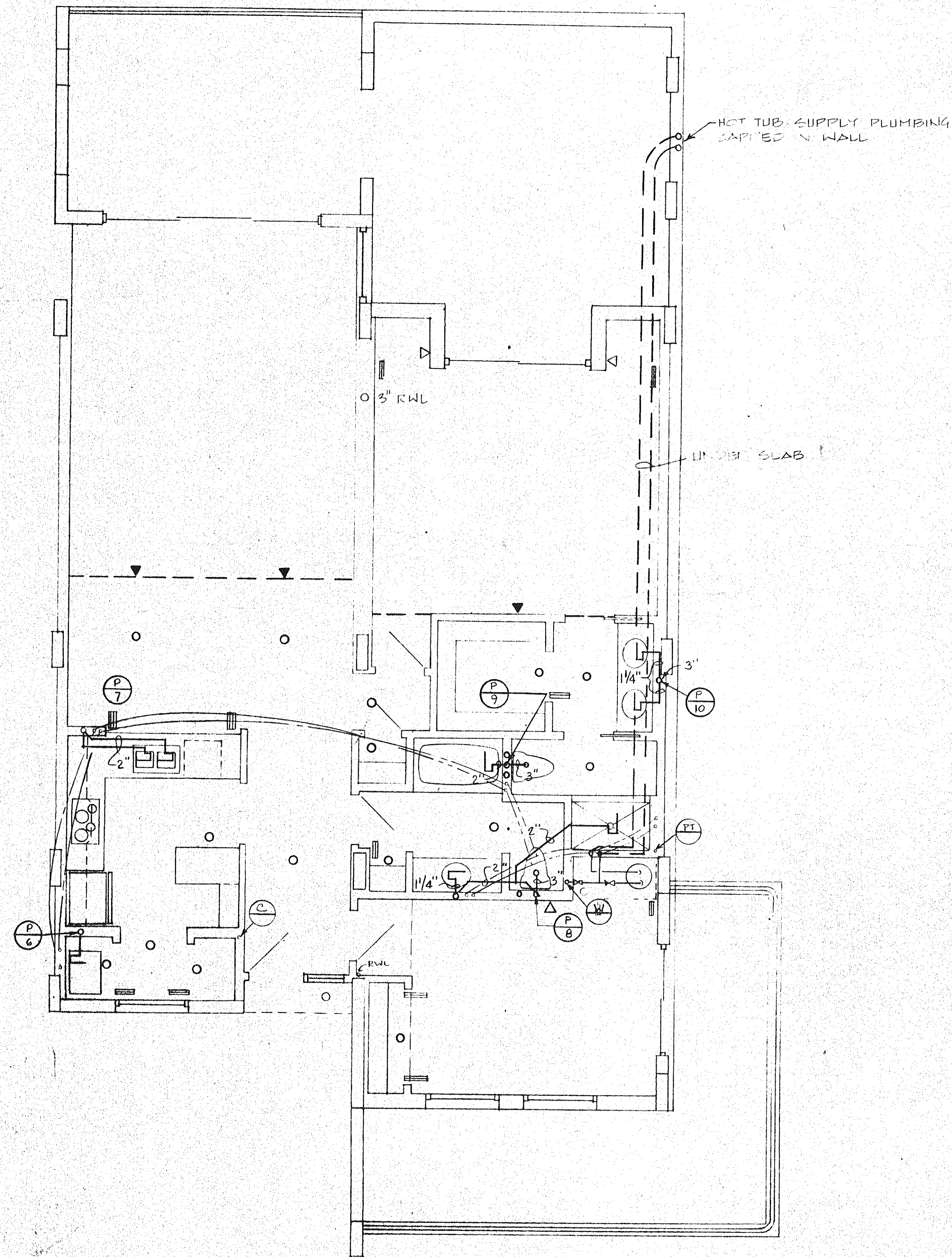


**UNIT 7 - LEFT PLUMBING PLAN**



**UNIT 7 - RIGHT PLUMBING PLAN**

ISSUED

4-1-83

REVISED

SHE

**P**

B1

ARVIDA CORPORATION · EDWARD J. SEBERT, AIA, ARCHITECT & PLANNER, P.A., THE SWA GROUP  
 ABRAHAM KUHN'S DEBAY CONSULTING ENGINEERS · OLSEN WHITE & ASSOCIATES, STRUCTURAL ENGINEERS · BENNETT & BISHOP, INC., CONSULTING ENGINEERS & SURVEYORS

**SUNSET BEACH**  
**OF LONG BEACH, KEY**  
 CONSULTING ENGINEERS & SURVEYORS