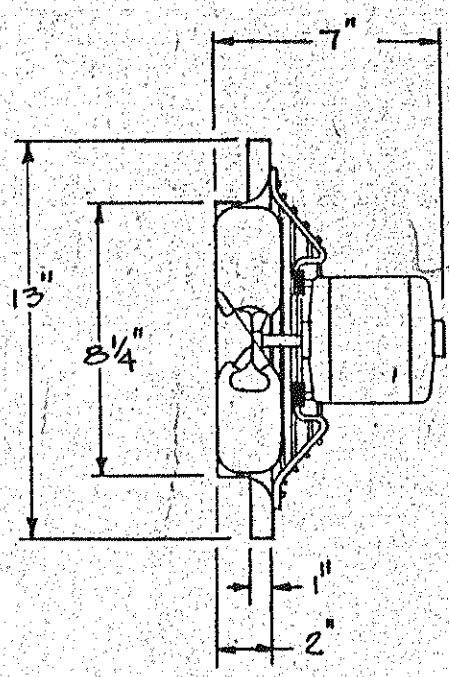


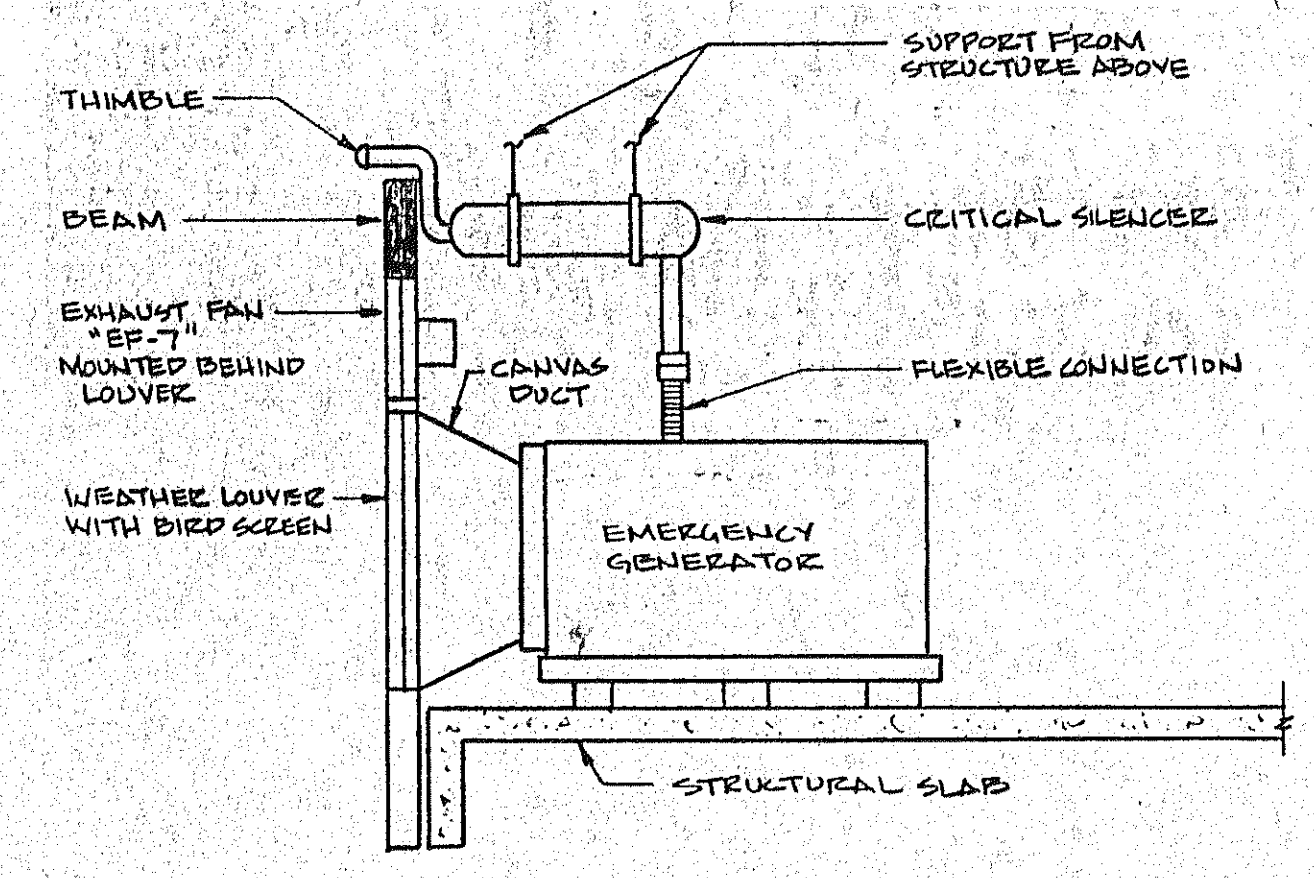
**PUMP DATA: (EACH PUMP)**

70 GPM @ 125' TDH, 3500 RPM 7.5 HP  
 208V, 3PH, 60 CYCLE  
 ALLIS CHALMERS 2000 SERIES, 1 1/2" G-365  
 BRONZE FITTED, DRIP PROOF MOTOR,  
 MECHANICAL SHAFT SEALS.

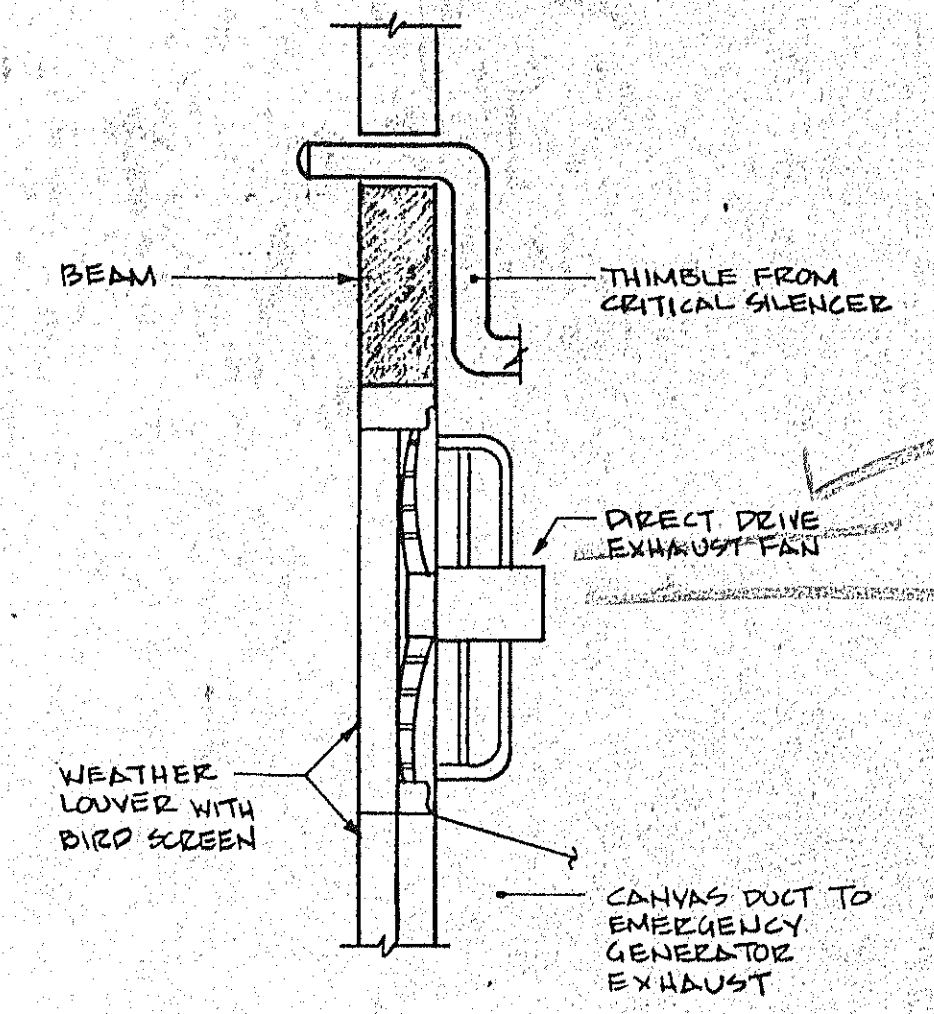
CONTROLLER SHALL BE ADJUSTABLE FREQUENCY  
 VARIABLE SPEED TYPE FOR DUPLEX PUMP OPERATION.  
 PRESSURE SIGNAL SHALL BE SENT FROM TOP FLOOR  
 TO CONTROLLER. PUMP START STOP PRESSURE SETTINGS  
 SHALL BE ADJUSTABLE W/LEAD LAG OPERATION &  
 ALTERNATOR SWITCH. PUMPS SHALL HAVE LOW SUCTION  
 CUT-OFF W/ALARM LIGHTS AND RUN LIGHTS.



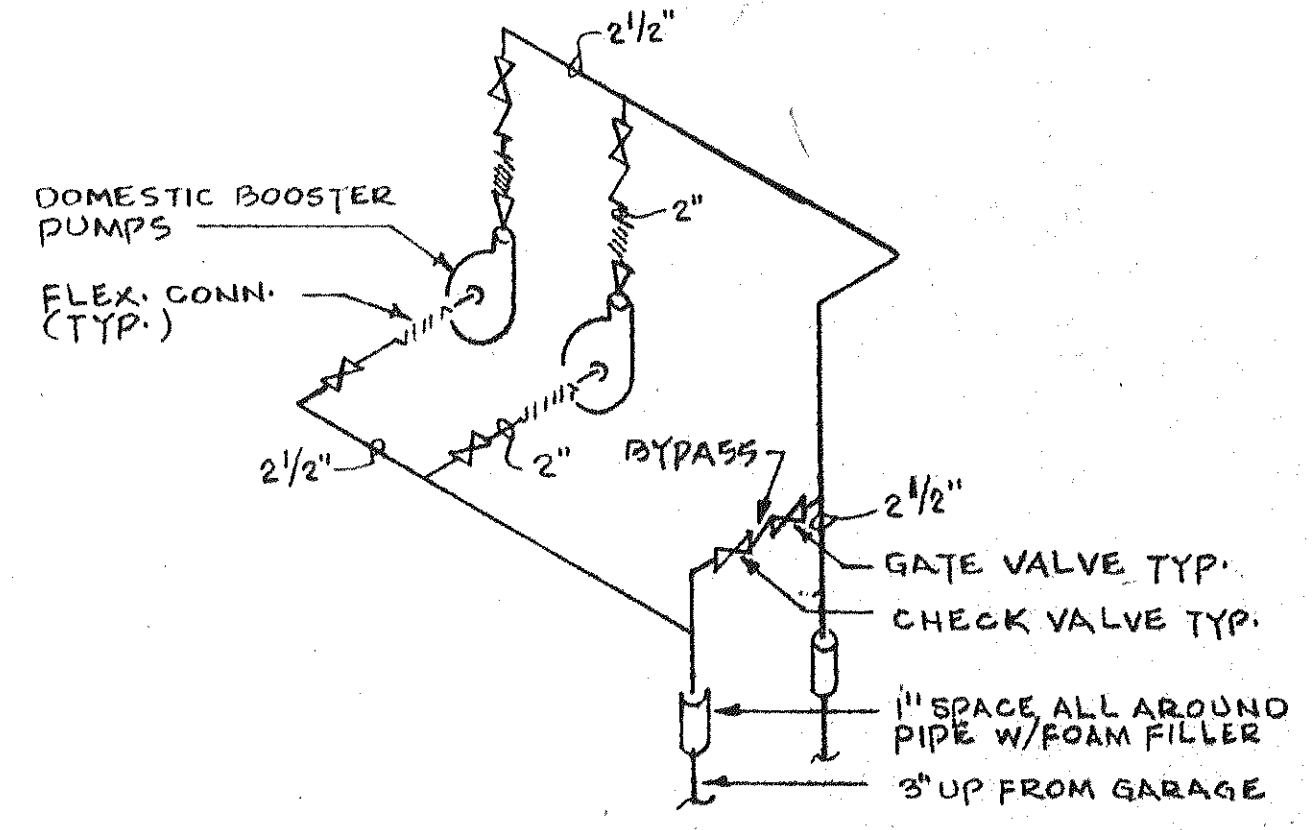
**EXHAUST FAN DETAIL B**  
 n.t.s. M-2



**SECTION A-A**  
 n.t.s.

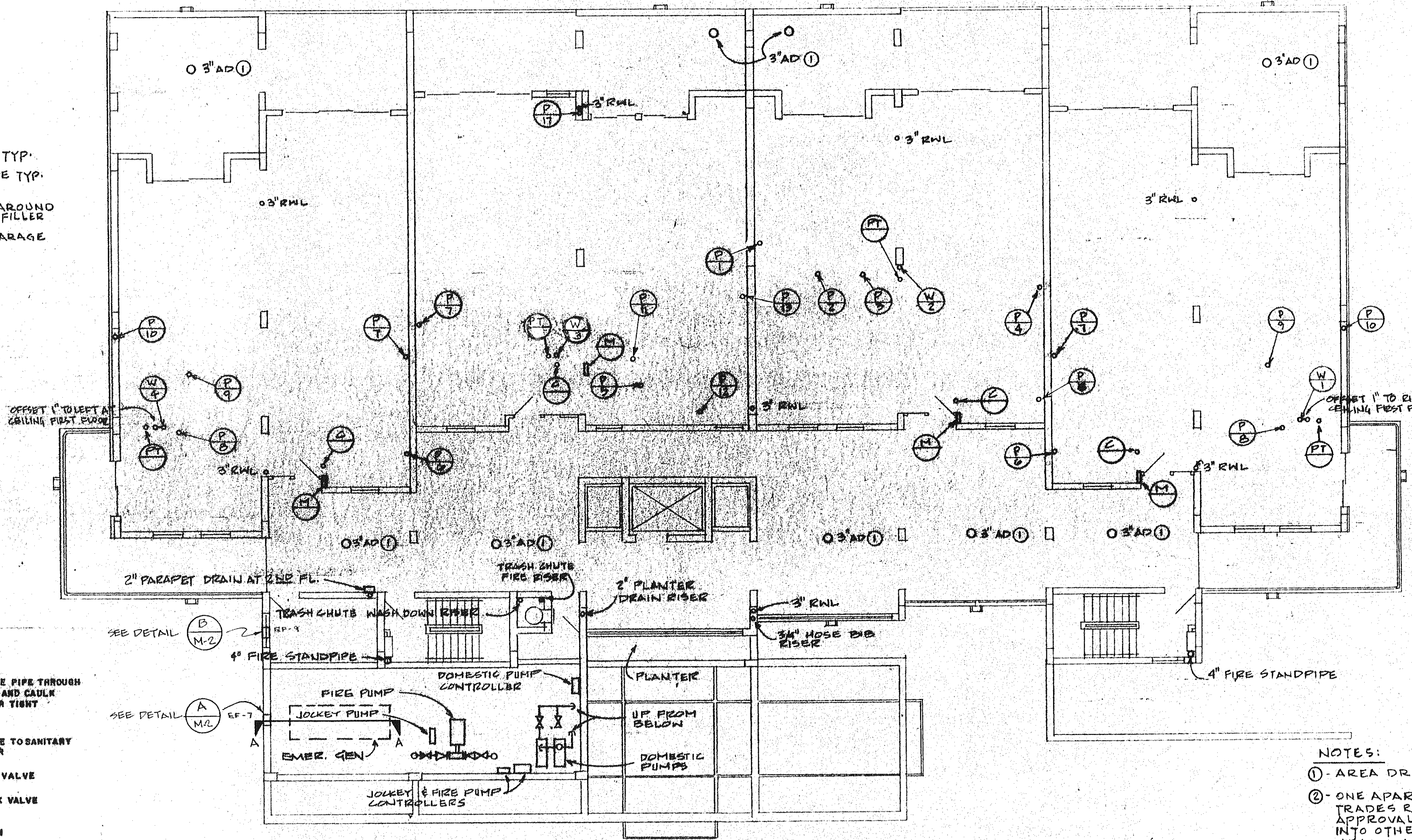


**EXHAUST FAN DETAIL A**  
 n.t.s. M-2

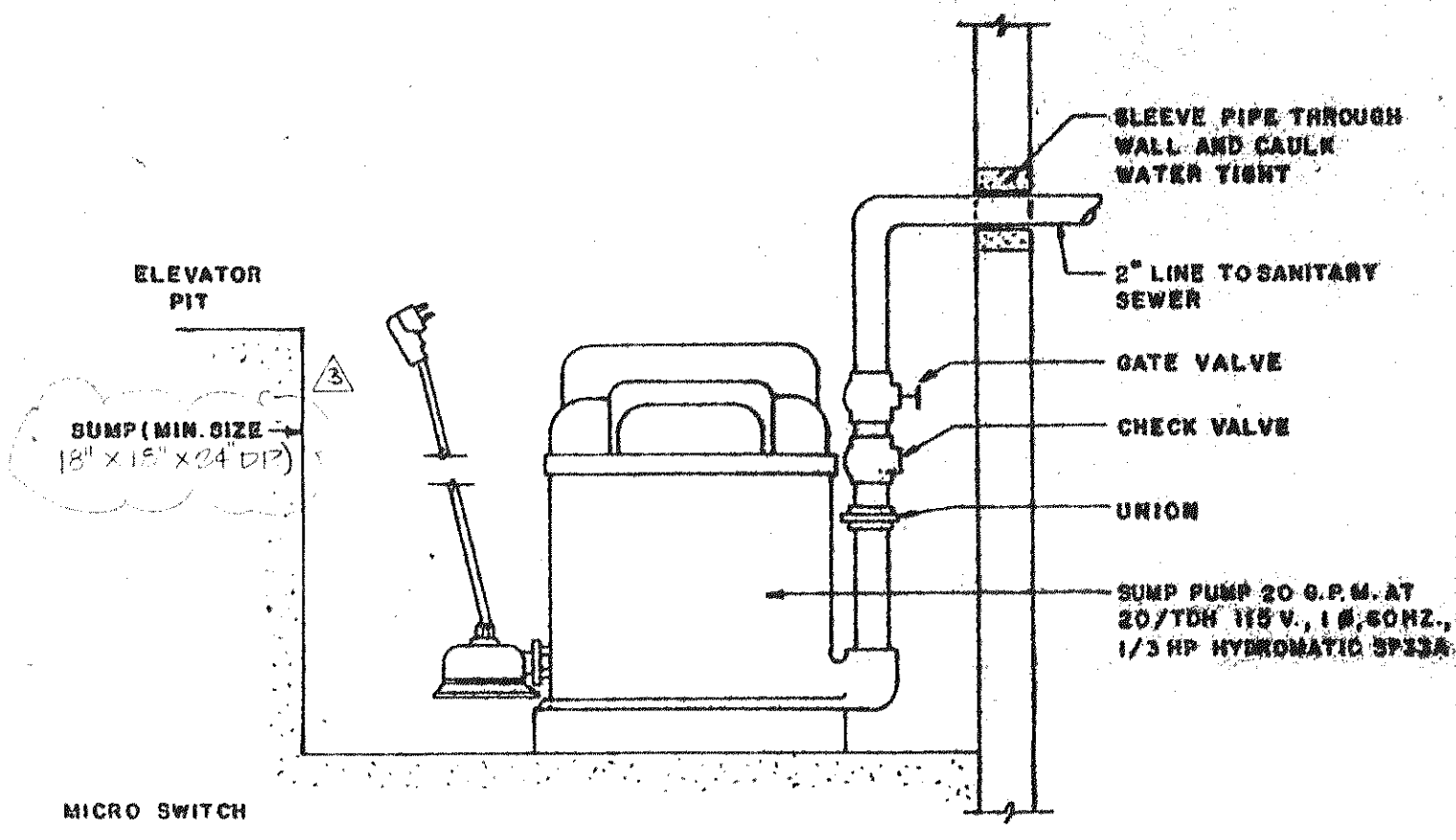


**BOOSTER PUMP DETAIL**  
 n.t.s.

**NOTE:**  
 PUMPS TO BE ON CONCRETE INERTIA PAD  
 WITH SPRING ISOLATORS SIZED FOR  
 ONE INCH STATIC DEFLECTION ...



**NOTES:**  
 ① - AREA DRAIN AT FIRST FLOOR ONLY  
 ② - ONE APARTMENT UNIT OF EACH TYPE SHALL HAVE ALL  
 TRADES ROUGHED IN FOR ENGINEERS AND ARCHITECTS  
 APPROVAL AND TRADE COORDINATION PRIOR TO PROCEEDING  
 INTO OTHER UNITS. LOCATION OF DIFFUSERS, SPRINKLER  
 HEADS, AND LIGHTING SHALL BE COORDINATED SO THAT  
 THEY ARE LOCATED ON A SINGLE AXIS OF A ROOM



**SUMP PUMP DETAIL**  
 n.t.s.

**BUILDING 2 - TYPICAL (FIRST FLOOR) MECHANICAL PLAN**

**SUNSET BEACH SOFONOBATA KE**  
 ARVDA CORPORATION, EDWARD J. SEBERT, AIA, ARCHITECT & PLANNER, INC., THE SVA GROUP  
 BRAHMANI, KUMARS, DEBAY, CONSULTING ENGINEERS, OLSEN, WHITE & ASSOCIATES, STRUCTURAL ENGINEERS, BENNETT & BISHOP, INC. CONSULTING ENGINEERS & SURVEYORS

ISSUED	4-1-83
REVISED	8-11-83 (CD)
	8-11-83 (15)
SHEET	
<b>M-2</b>	
BLDG. 2	
OF	