

FIXTURE SCHEDULE

| TYPE | MANUFACTURER | CATALOG NO. | LAMPS | VOLTS | MOUNTING | REMARKS |
|------|-----------------------|----------------------------|----------|-------|---------------|-----------------------|
| A | PRESOLITE LIGHTOLIER | 7342 STD. 1803 | 1-75-40 | 120 | SURFACE | |
| B | PRESOLITE LIGHTOLIER | 7346 STD. 1833 | 1-75-40 | 120 | WALL BRACKET | |
| C | LITHONIA KEYSTONE | 4120 240 X LU240 WLLE | 2-F40 | 120 | SURFACE | |
| D | LIGHTOLIER PROGRESS | 12535 P7199 LE 120V | 2-F40 | 120 | SURFACE | |
| E | PRESOLITE LIGHTOLIER | 21K-545 1102-1107 | 1-100-40 | 120 | RECESSED | |
| N | PRESOLITE LIGHTOLIER | 21K-545 1102-PI-1171 | 1-75-119 | 120 | RECESSED | |
| F | ALICO PROGRESS | 215-25W P7010-120V NPF | 2-T5H3W | 120 | UNDER CABINET | |
| F1 | ALICO PROGRESS | 128-31W P7000-120V NPF | 1-T5-31W | 120 | UNDER CABINET | |
| G | LIGHTOLIER | 1107-1171 | 1-75-119 | 120 | RECESSED | |
| H | LITHONIA KEYSTONE | 4120 240 X C240-LE-120V | 2-F40 | 120 | SURFACE | |
| I | PRESOLITE LIGHTOLIER | 21K-545 1102-PI-1177 | 2-100-40 | 120 | RECESSED | |
| K | TRIED DOT | 1100-1100 | 1-100-40 | 120 | WALL BRACKET | |
| L | LITHONIA SIMKAR | 4120 240 X IF240-L6 | 2-F40 | 120 | SURFACE | |
| X | DUAL LIFE LIGHTALARMS | X-2100 200 X 2100 UXA 120V | 2-200-40 | 120 | SURFACE MOUNT | |
| M | KIM HUBBELL | 1010N 309-15 | 1-150W | 120 | BRACKET | DIMMED TO 50% VOLTAGE |

FIRE ALARM CONTROL PANEL
HOUSE PANEL H
NORMAL POWER MAIN DISCONNECT
APARTMENT MAIN DISCONNECT
APARTMENT METERS
APARTMENT MAIN DISCONNECT

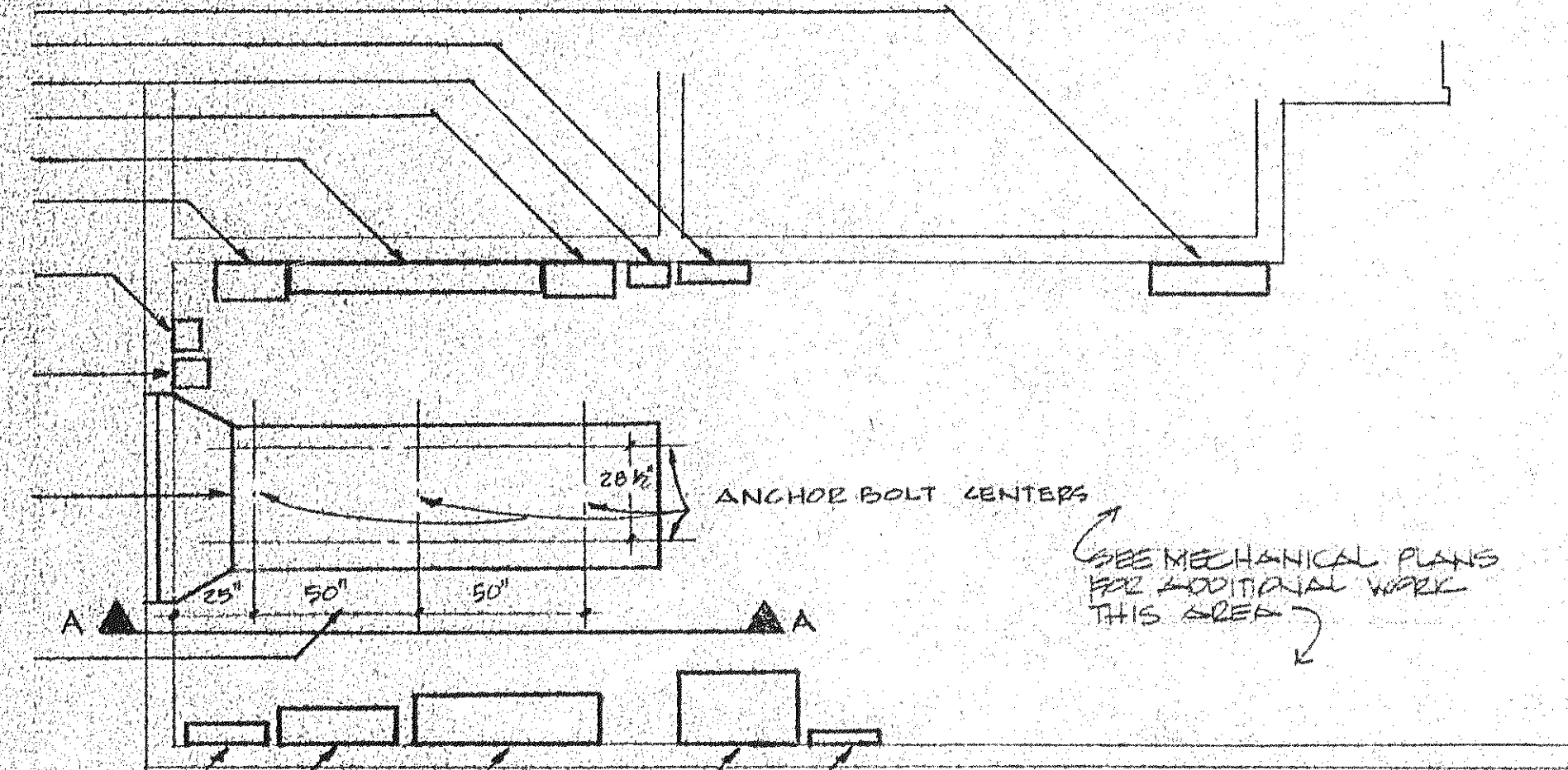
PROVIDE 3/4" IN MAT FROM CHARGER TO BATTERIES BATTERY CHARGER

DAY TANK (FUEL PUMP BELOW) PROVIDE 1/2" SLEEVES FOR FUEL LINES

EMERGENCY GENERATOR

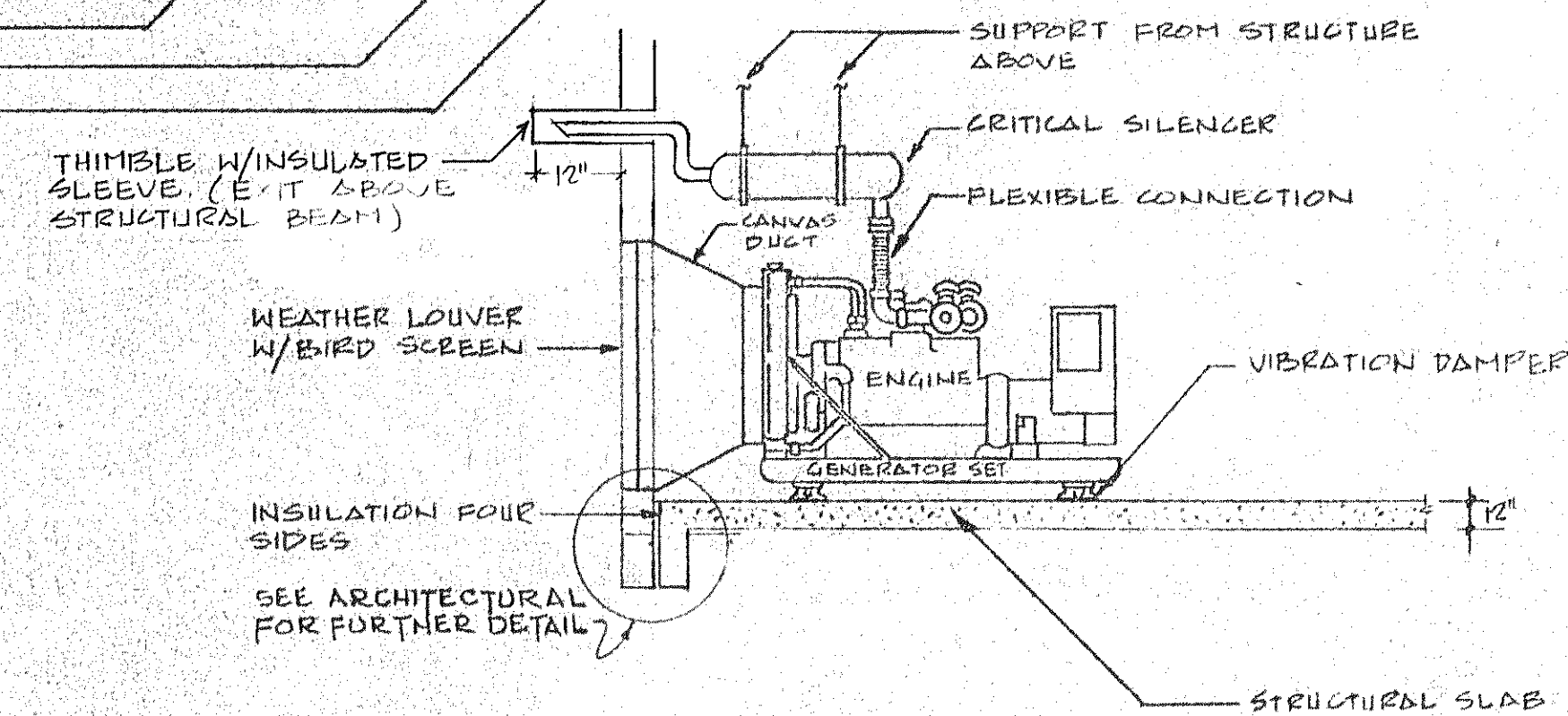
VERIFY ACTUAL DIMENSIONS WITH SELECTED MANUFACTURER

F.P.L. 40 G.P. METER
EMERGENCY MAIN DISCONNECT
AUTOMATIC TRANSFER SWITCH
EMERGENCY DISTRIBUTION SWITCHBOARD
EMERGENCY PANEL EM



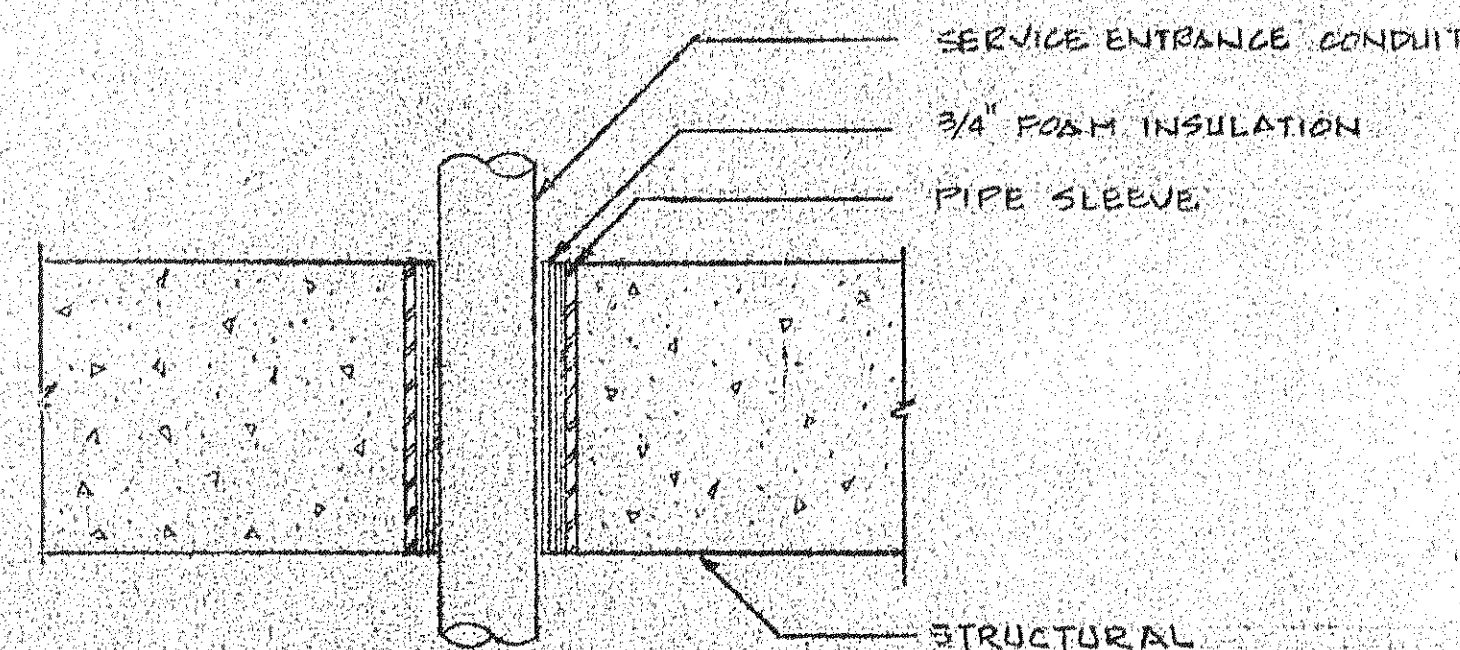
PUMP - ELECTRICAL ROOM PLAN

scale 1/4" = 1'-0"



SECTION A-A

n.t.s.



DETAIL OF SERVICE ENTRANCE CONDUIT

THROUGH INERTIA MAT

