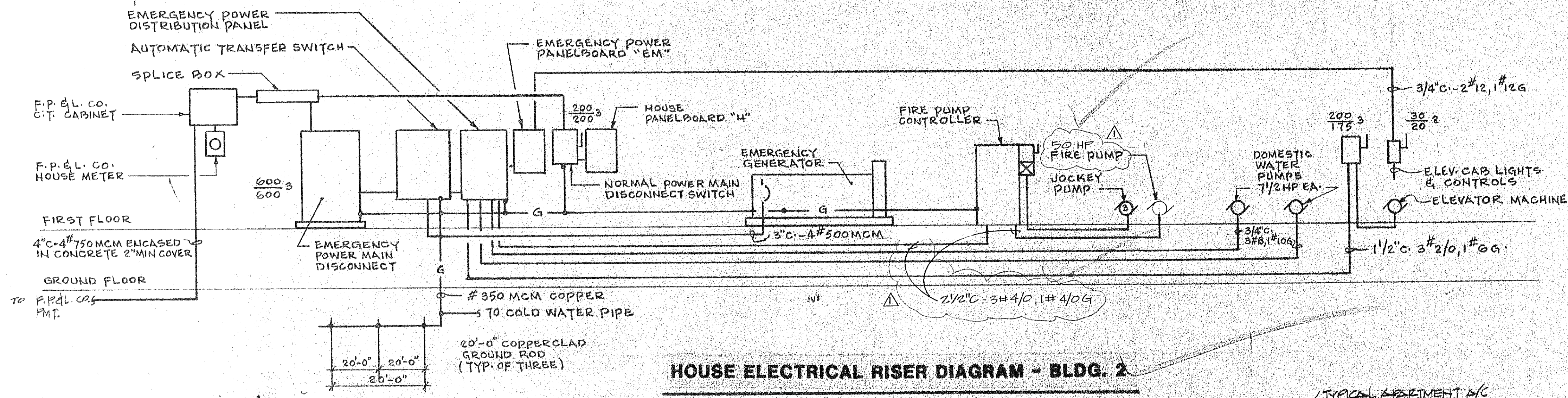


APARTMENT FEEDER SCHEDULE		
LOAD CENTER	METER CENTER CIRCUIT BREAKER	FEEDER
A	2P. 175A.	1 1/2" C. - 3# 2/0, 1# 4G.
B	2P. 175A.	1 1/2" C. - 3# 2/0, 1# 4G.
C	2P. 200A.	2" C. - 3# 2/0, 1# 4G.
D	2P. 200A.	2" C. - 3# 3/0, 1# 4G.
D+	2P. 200A.	2" C. - 3# 3/0, 1# 4G.
D MOD	2P. 200A.	2" C. - 3# 3/0, 1# 4G.

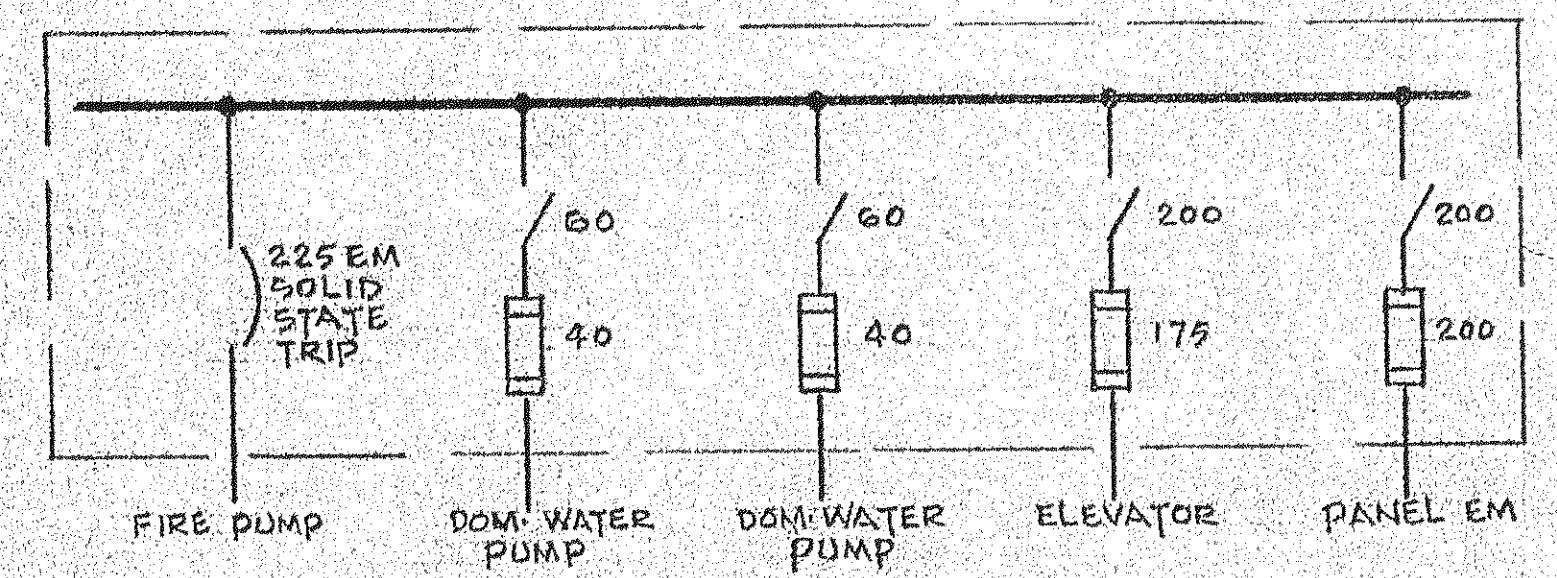
* ALL BRANCH CIRCUITS FOR AIR CONDITIONING EQUIPMENT, CONDUIT AND CABLE SHALL BE INCLUDED IN THIS CONTRACT. THE CONTRACTOR SHALL SIZE THE CABLE IN ACCORDANCE WITH EQUIPMENT MANUFACTURERS RECOMMENDATIONS AND VOLTAGE DROP REQUIREMENTS.



HOUSE ELECTRICAL RISER DIAGRAM - BLDG. 2

n.t.s.

800 AMPERE, 3Ø, 4W, 250V. DISTRIBUTION PANELBOARD IN NEMA I ENCLOSURE W/ GROUND BUS AND BRANCH DEVICES AS SHOWN

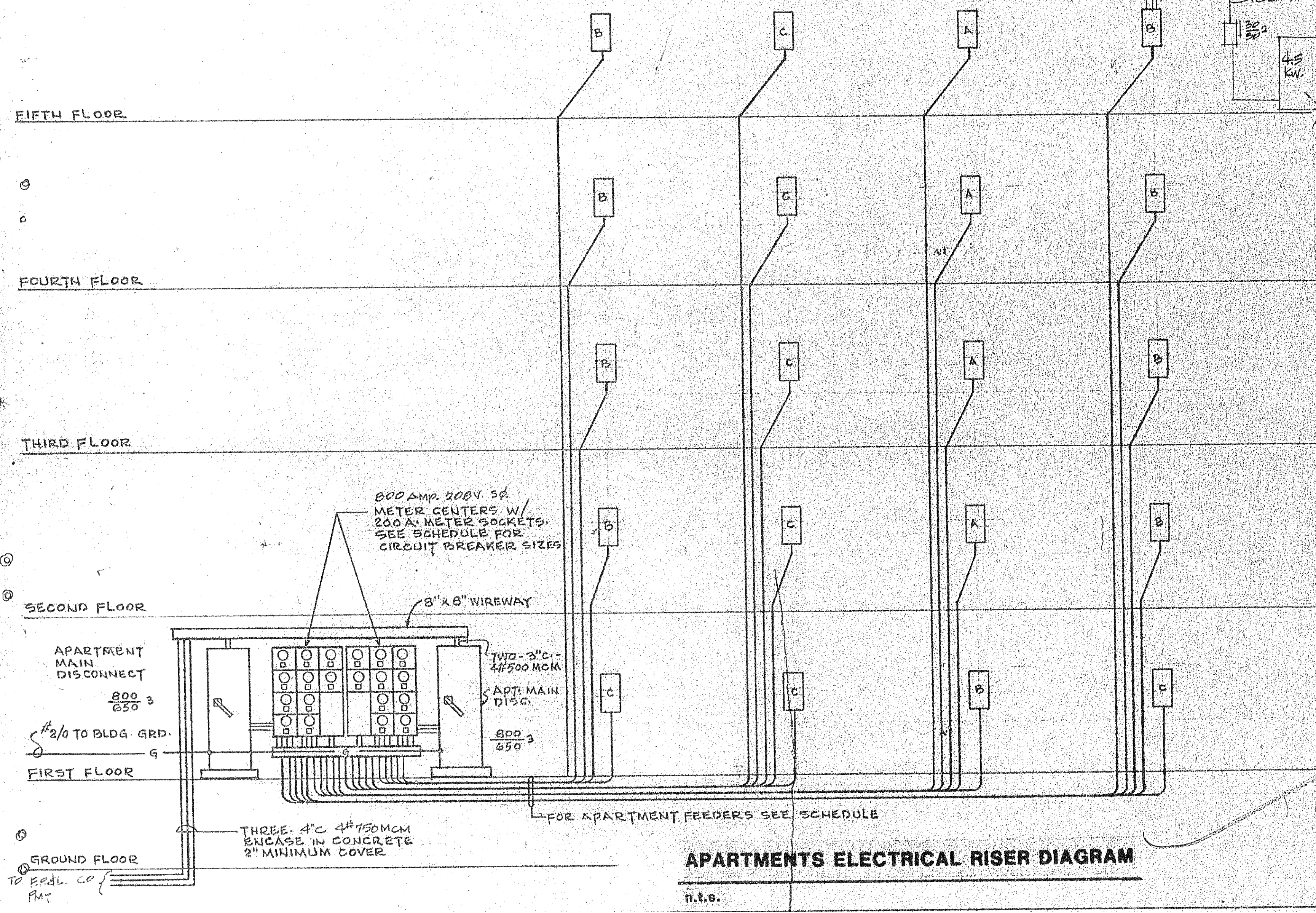


SINGLE LINE DIAGRAM EMERGENCY DISTRIBUTION PANEL BOARD

n.t.s.

RISER DIAGRAM NOTES

- 1- EMERGENCY POWER MAIN DISCONNECT - 3POLE, 800A. HEAVY DUTY TYPE W/ 100 AMPERE BUSMAN CURRENT LIMITING FUSE ELEMENT, TIME DELAY CLASS L FUSES.
- 2- AUTOMATIC TRANSFER SWITCH - 3POLE, 800 AMPERE, 250V. WITH OVER LAPPING NEUTRAL TRANSFER CONTACTS AND STANDARD ACCESSORIES IN NEMA I ENCLOSURE.
- 3- EMERGENCY GENERATOR - 155 KW, 120/208V, 3Ø, 4W. WITH STANDARD CONTROLS AND GAUGES, DIESEL ENGINE DRIVEN, WATER COOLED MOUNTED ON VIBRATION DAMPERS.
- 4- THE CONTRACTOR SHALL REFER TO THE MECHANICAL AND ARCHITECTURAL PLANS FOR VENTILATION AND/OR HOT TUB LOCATION. ALL NECESSARY ELECTRICAL EQUIP. AND CIRCUITRY SHALL BE PROVIDED UNDER THIS CONTRACT.



APARTMENTS ELECTRICAL RISER DIAGRAM

n.t.s.

SUNSET BEACH SOLAR BOARDS
 ARVIDA CORPORATION EDWARD J. SEBERT, AIA ARCHITECT & PLANNER PA. THE SWA GROUP
 PRABHAKAR K. JAIN, DEBAJ CONSULTING ENGINEERS & SURVEYORS
 BENNETT & BISHOP, INC. CONSULTING ENGINEERS & SURVEYORS
 4.17.77
 8.23.83
 SHEET
E-14
 BLDG. 2
 OF