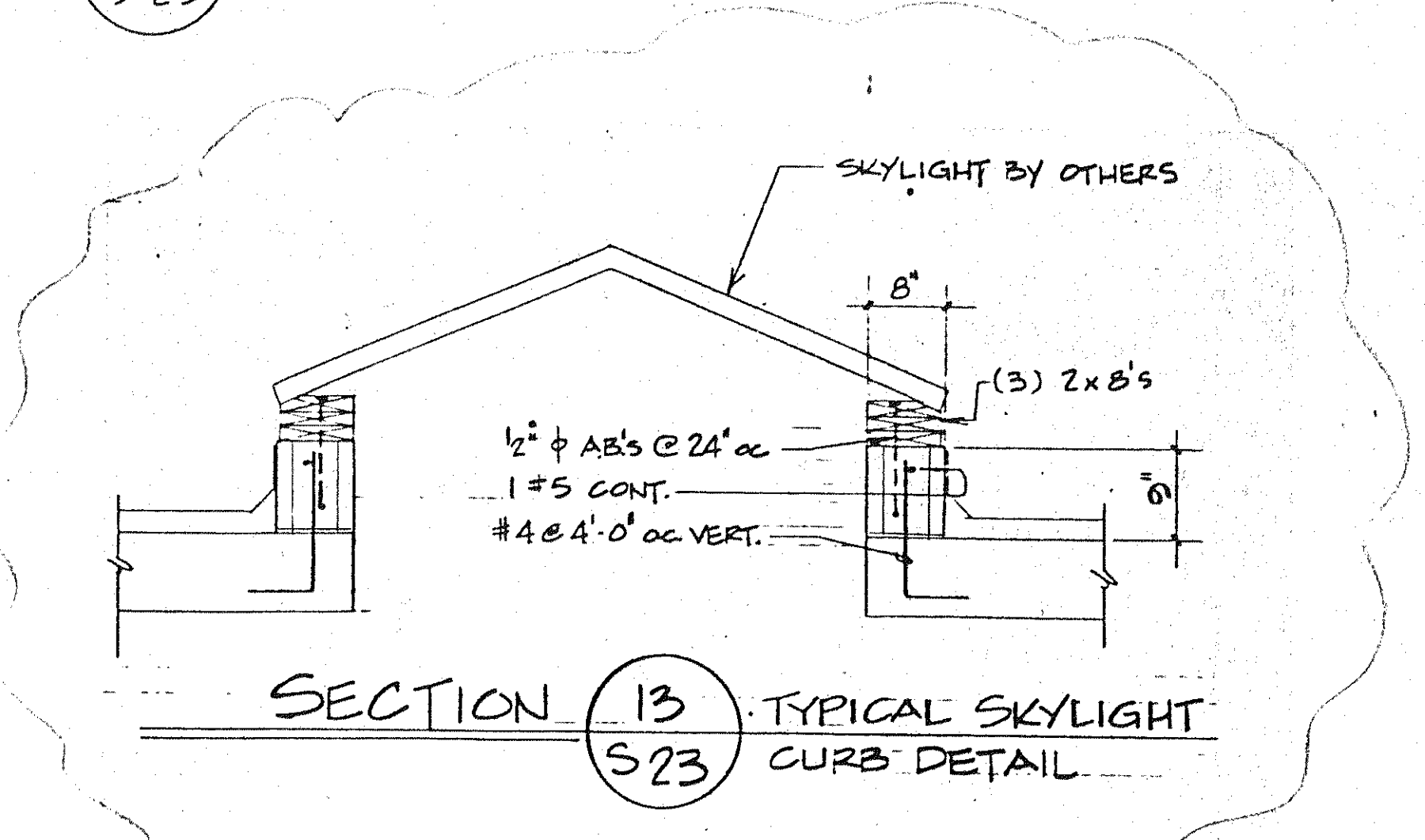
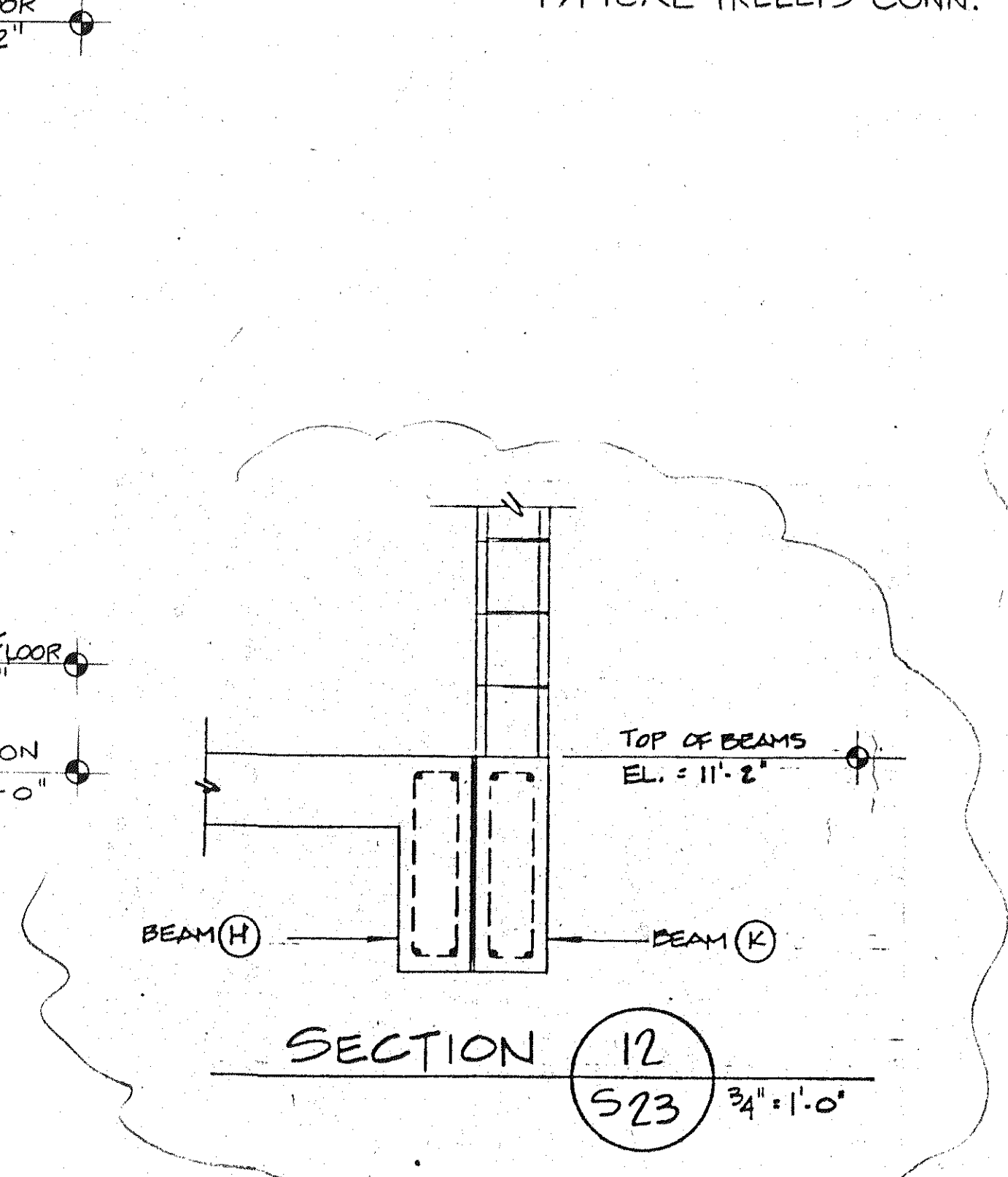
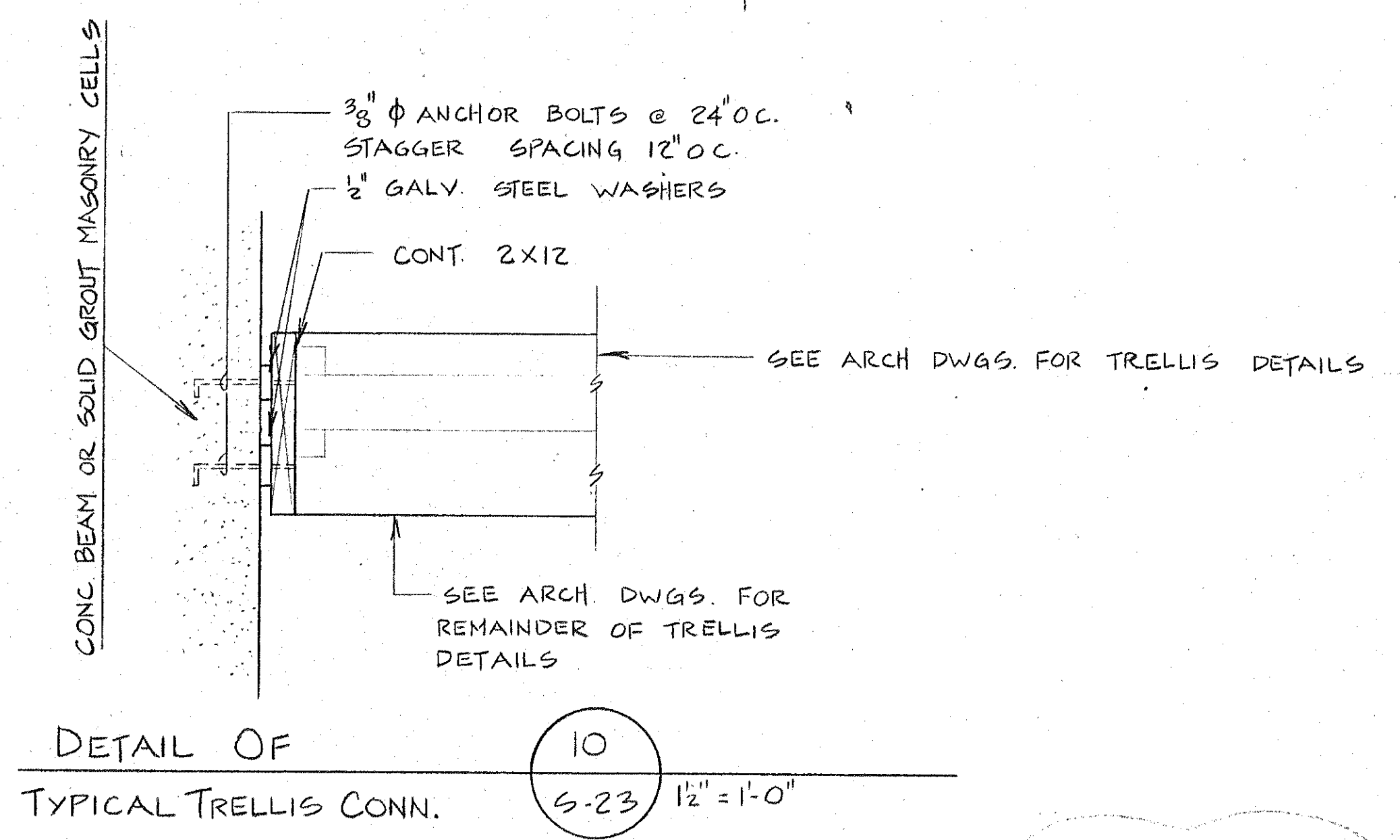
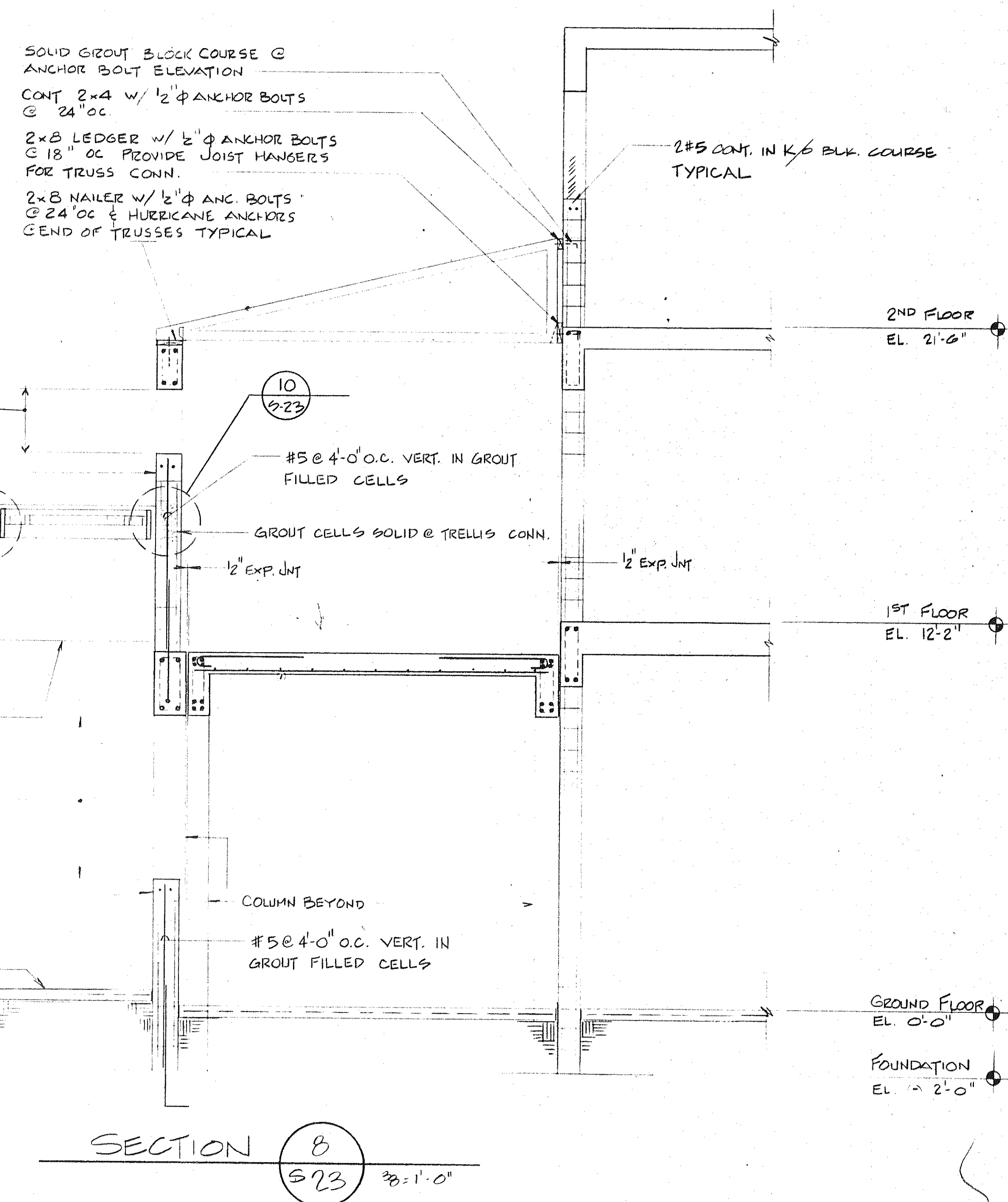
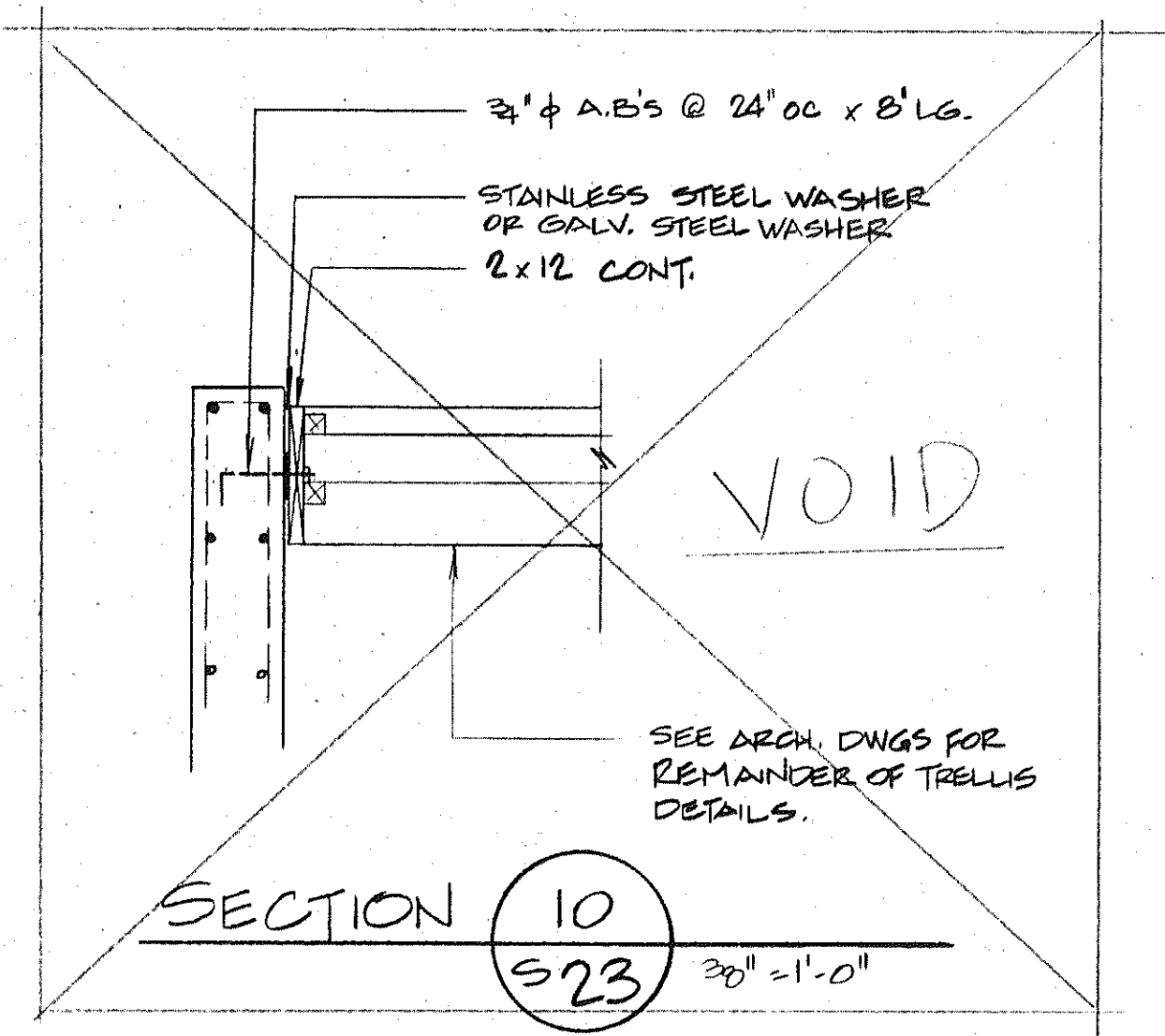
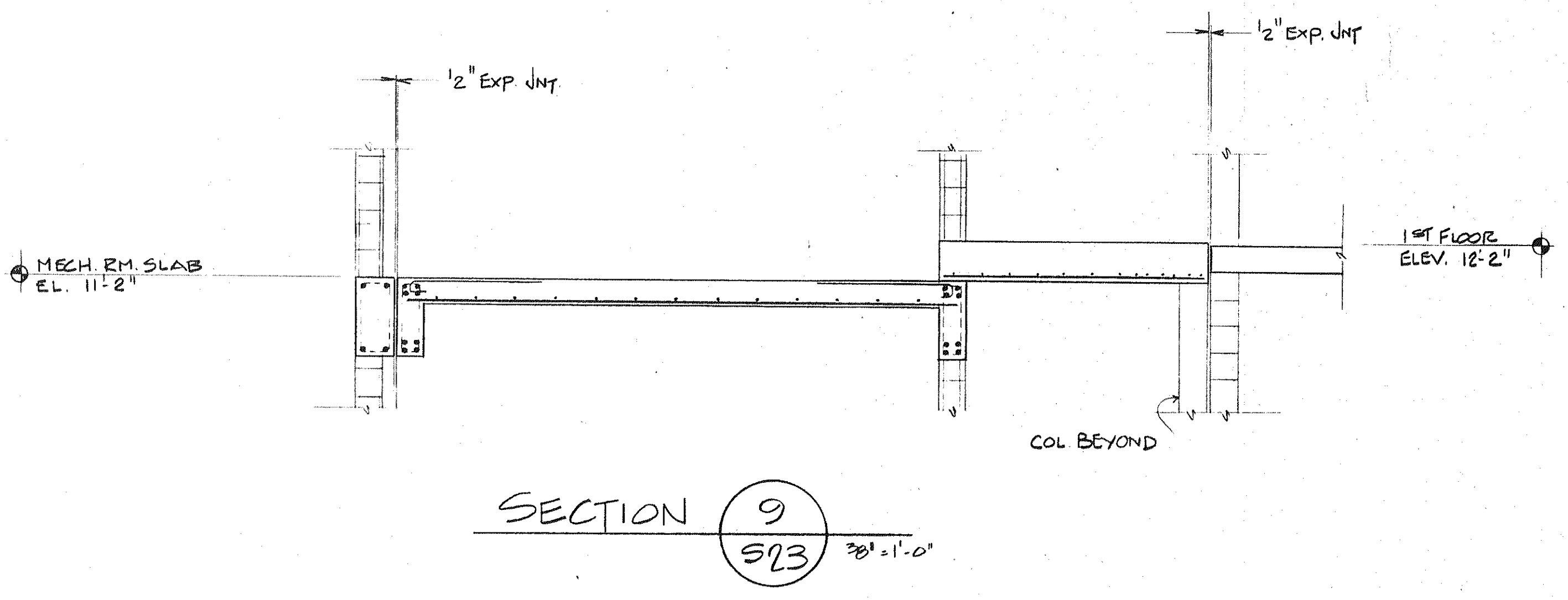


TRELLIS NOTES:
 WOOD TRELLIS MEMBER TO CEDAR WITH MINIMUM FIBER BENDING STRESS = 600 PSI MODULUS OF ELASTICITY 1000 KSI



138
 139
 140
 141
 142
 143
 144
 145
 146
 147
 148
 149
 150

SOLID GROUT BLOCK COURSE @ ANCHOR BOLT ELEVATION
 CONT 2x4 w/ 1/2" ANCHOR BOLTS @ 24" O.C.
 2x8 LEDGER w/ 1/2" ANCHOR BOLTS @ 18" O.C. PROVIDE JOIST HANGERS FOR TRUSS CONN.
 2x8 NAILER w/ 1/2" ANCH. BOLTS @ 24" O.C. & HURRICANE ANCHORS @ END OF TRUSSES TYPICAL
 2#5 CONT. IN K/E BLK. COURSE TYPICAL
 #5 @ 4'-0" O.C. VERT. IN GROUT FILLED CELLS
 GROUT CELLS SOLID @ TRELLIS CONN.
 1/2" EXP. JNT
 1/2" EXP. JNT
 2ND FLOOR ELEV. 21'-6"
 1ST FLOOR ELEV. 12'-2"
 MECH ROOM SLAB ELEV. 11'-2"
 MECH ROOM SLAB ELEV. 11'-2"
 COLUMN BEYOND
 TRELLIS BEAM BEYOND
 OPENING SIZE PER ARCH DWGS
 CONC CAP w/ 2-#5 CONT. DRILL & GROUT REINF. @ 1" INTO COLUMNS @ EA END
 TOP OF TRELLIS BEAM ELEV. 15'-8"
 TRELLIS BM (L)
 OPENING SIZE PER ARCH DWGS
 CONC CAP w/ 2-#5 CONT. DRILL & GROUT REINF. @ 1" INTO COLUMNS @ EA END
 SEE ARCH. DWGS FOR SIDEWALK ELEVATIONS
 COLUMN BEYOND
 #5 @ 4'-0" O.C. VERT. IN GROUT FILLED CELLS
 GROUND FLOOR ELEV. 0'-0"
 FOUNDATION ELEV. 2'-0"
 TOP OF BEAMS ELEV. 11'-2"
 BEAM (H) BEAM (K)

3/4" AB'S @ 24" O.C. x 8' LG.
 STAINLESS STEEL WASHER OR GALV. STEEL WASHER
 2x12 CONT.
 VOID
 SEE ARCH. DWGS FOR REMAINDER OF TRELLIS DETAILS.
 3/8" ANCHOR BOLTS @ 24" O.C. STAGGER SPACING 12" O.C.
 1/2" GALV. STEEL WASHERS
 CONT. 2x12
 SEE ARCH. DWGS. FOR TRELLIS DETAILS
 SEE ARCH. DWGS. FOR REMAINDER OF TRELLIS DETAILS
 CONC. BEAM OR SOLID GROUT MASONRY CELLS