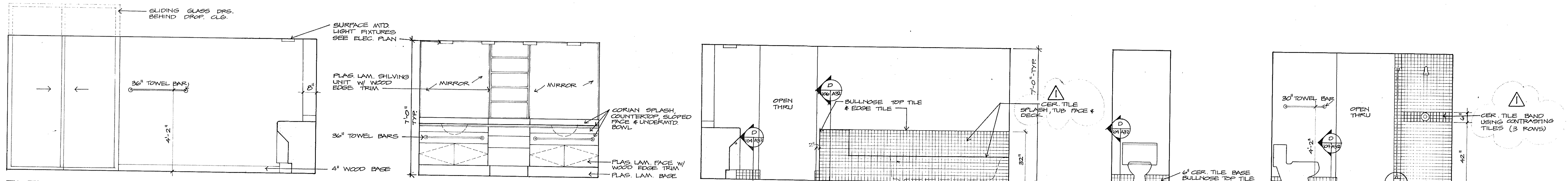


NOTES:  
 1. MEDICINE CABINETS TO BE BUILT IN W/ MIRROR FACE  
 2. ALLOW FOR MARBLE SILL BETWEEN CERAMIC TILE & CARPET



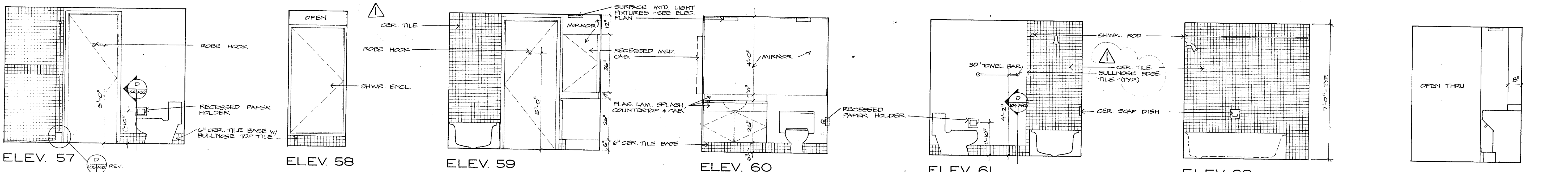
ELEV. 52  
 UNIT D+R  
 REVERSE D+L  
**BATH 1**

ELEV. 53

ELEV. 54

ELEV. 55  
 UNIT D+R  
 REVERSE D+L  
**TOILET ROOM**

ELEV. 56



ELEV. 57

ELEV. 58

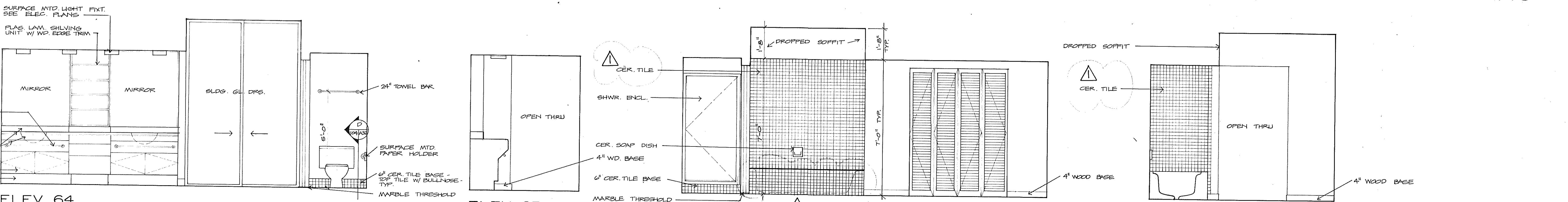
ELEV. 59  
 UNIT D+R  
 REVERSE D+L  
**BATH 2**

ELEV. 60

ELEV. 61

ELEV. 62

ELEV. 63  
 UNITS D-R, D-MOD-R  
 REVERSE D-L, D-MOD-L  
**DRESSING**



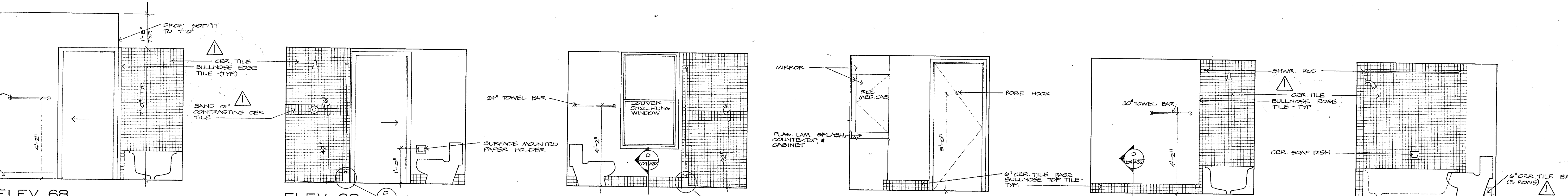
ELEV. 64  
 UNITS D-R, D-MOD-R  
 REVERSE D-L, D-MOD-L  
**DRESSING / BATH 1 / TLT. RM.**

ELEV. 65

**DRESSING**

ELEV. 66  
**TLT. / BATH 1 / DRESSING**

ELEV. 67  
 UNITS D-R, D-MOD-R  
 REVERSE D-L, D-MOD-L  
**BATH 1**



ELEV. 68

ELEV. 69  
 UNIT D-R, D-MOD-R  
 REVERSE D-L, D-MOD-L  
**TOILET RM.**

ELEV. 70

ELEV. 71  
 UNIT D-MOD-R  
 REVERSE D-MOD-L  
**BATH 2**

ELEV. 72

ELEV. 73

**SUNSET BEACH**  
 SOF LONG BOAT KEY  
 INTERIOR ELEVATIONS 3/8" = 1'-0"  
 ARVADA CORPORATION · EDWARD J. SEIBERT, AIA, ARCHITECT & PLANNER, P.A., THE SWA GROUP  
 BRABHAM, KUHN, DEBAY, CONSULTING ENGINEERS · OLSEN WHITE & ASSOCIATES, STRUCTURAL ENGINEERS · BENNETT & BISHOP, INC., CONSULTING ENGINEERS & SURVEYORS  
 ISSUED 12 DEC '82  
 REVISED 4-1-83  
 SHEET A-32 OF 37