
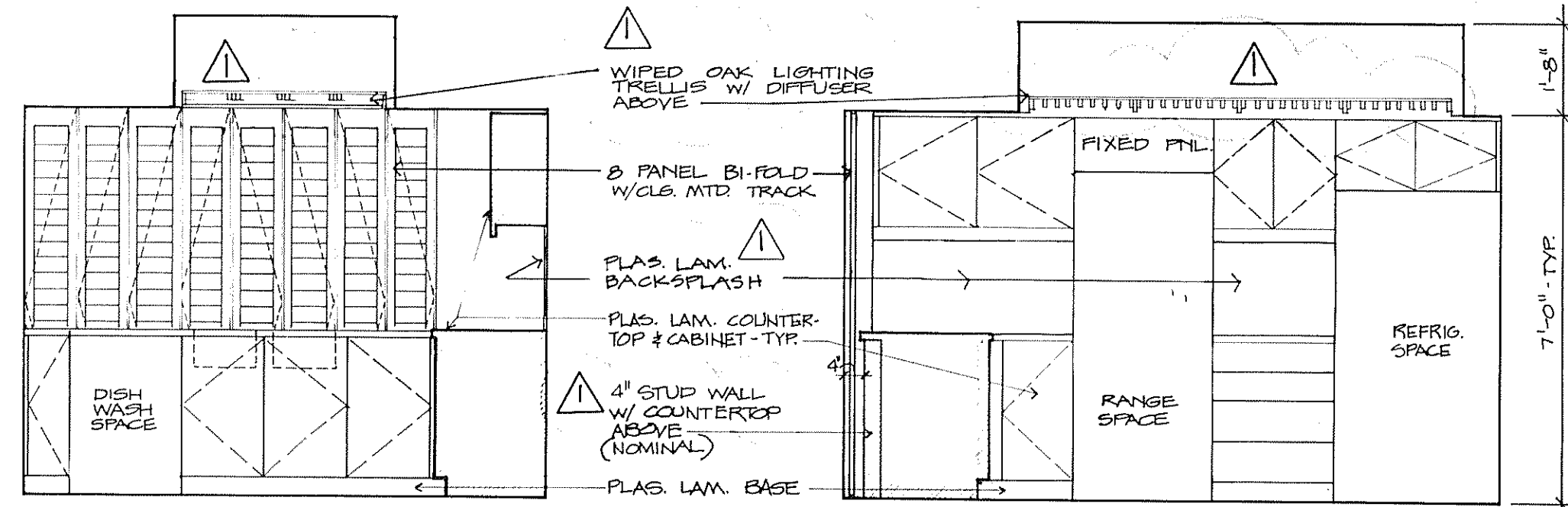
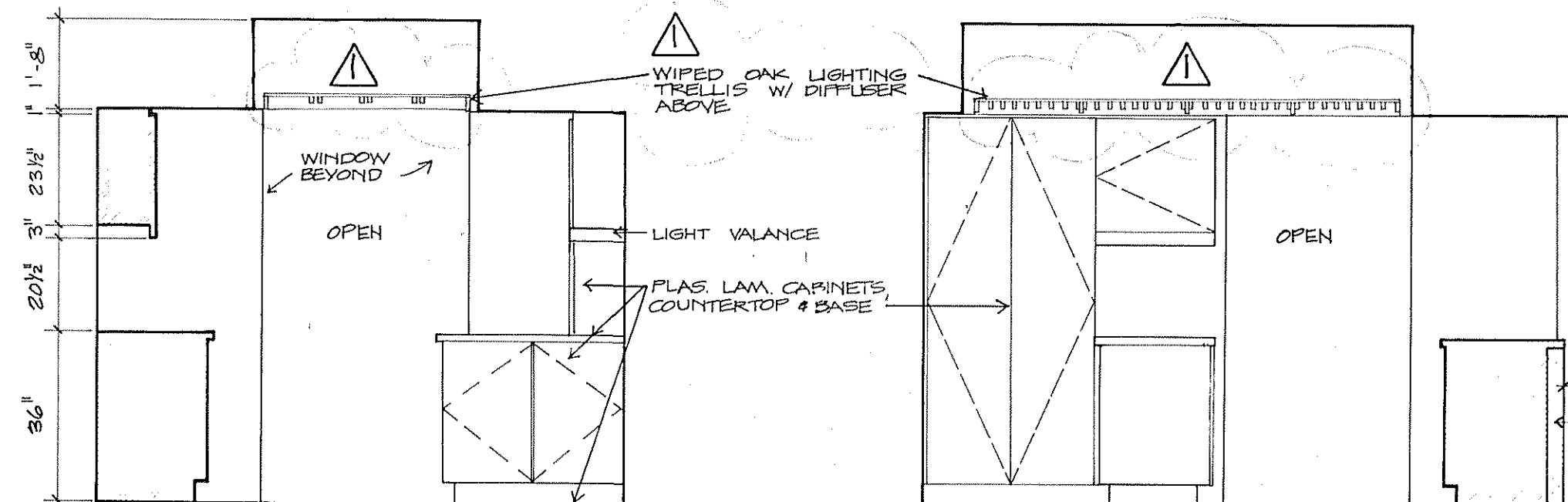


NOTES:

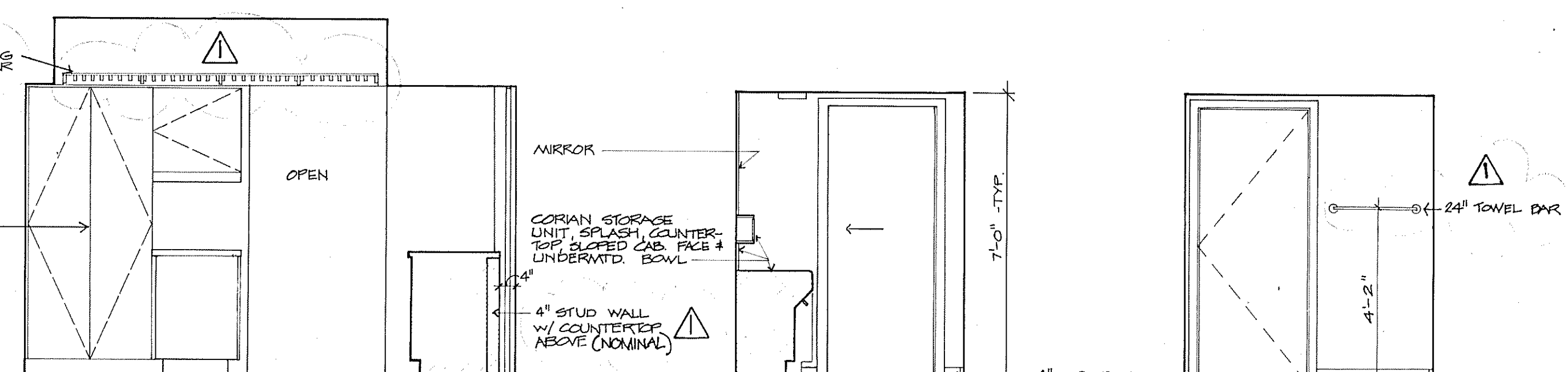
1. SEE  FOR KITCHEN CABINET WOOD TRIM & PULLS.
2. VERIFY CABINET OPENINGS W/ APPLIANCES PRIOR TO FABRICATION.
3. MEDICINE CABINETS TO BE BUILT-IN W/ MIRROR FACE
4. ALLOW FOR MARBLE SILL BETWEEN TILE FLOORS (CERAMIC TILE) & CARPET



ELEV. 1
UNITS A-R, A+R
REVERSE A-L, A+L
KITCHEN



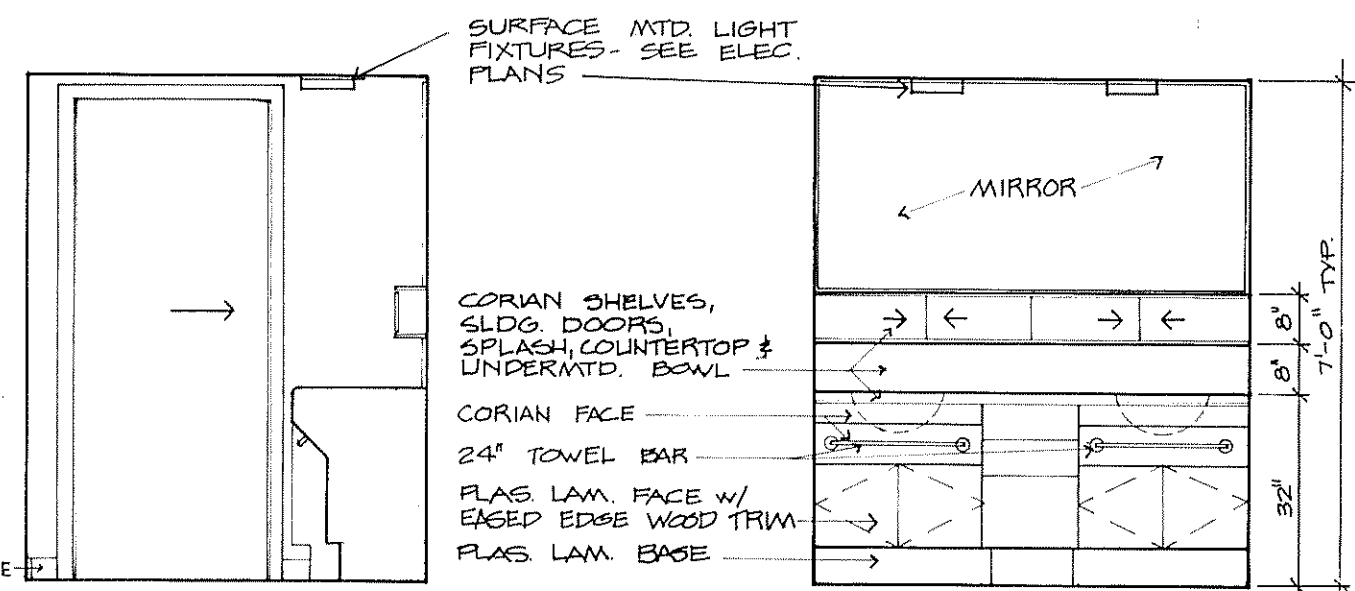
ELEV. 3



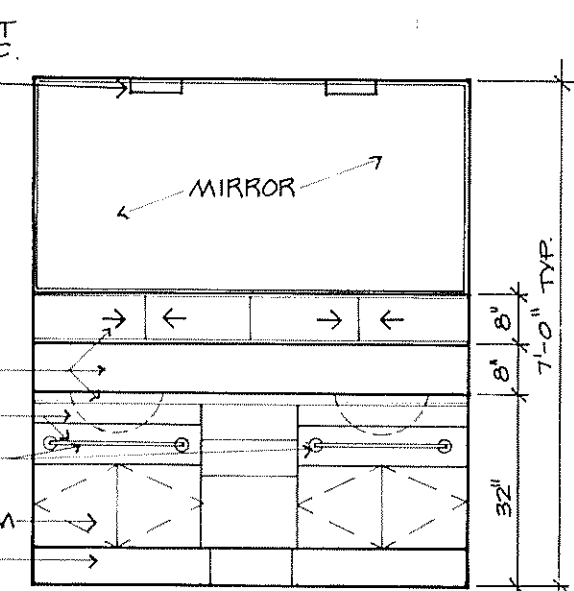
ELEV. 4

ELEV. 5
UNITS A-R, A+R
REVERSE A-L, A+L
DRESSING

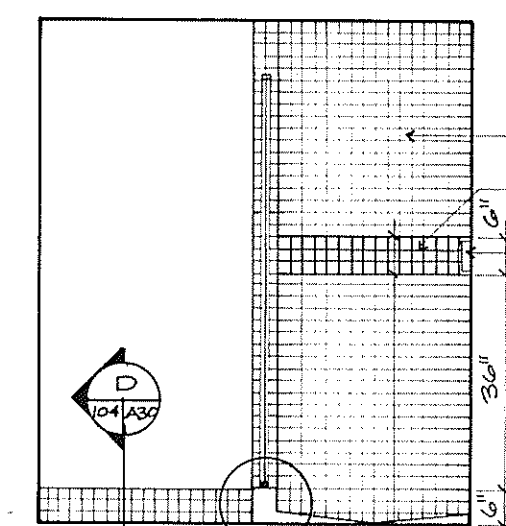
ELEV. 6



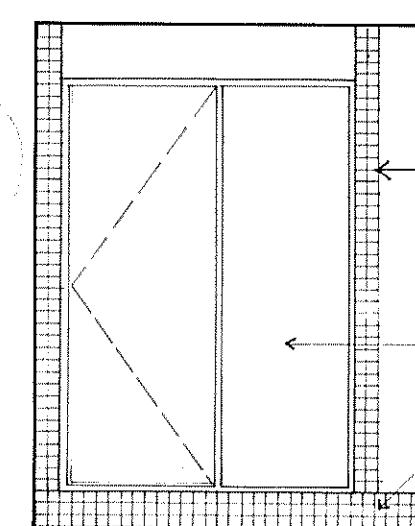
ELEV. 7



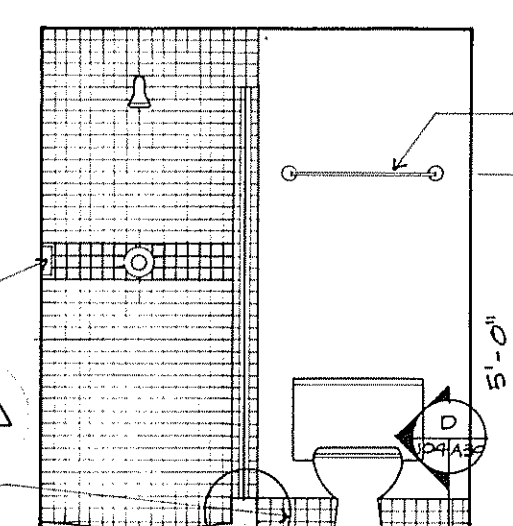
ELEV. 8



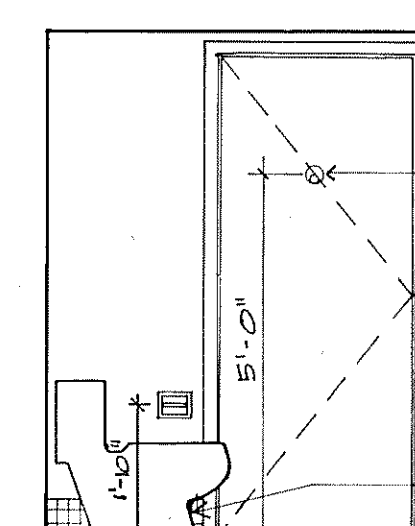
ELEV. 9
UNITS A-R, A+R
REVERSE A-L, A+L
BATH 1



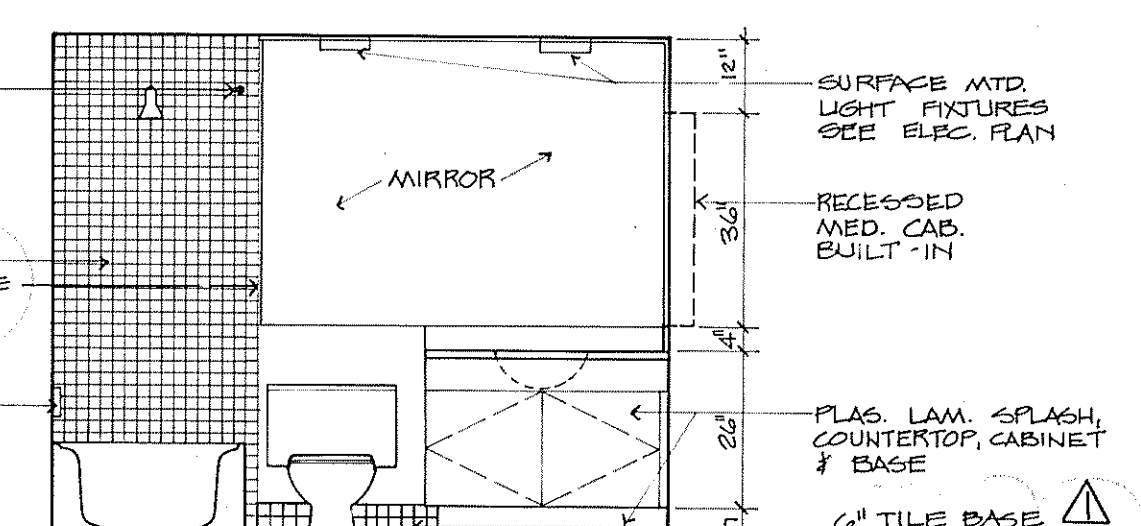
ELEV. 10



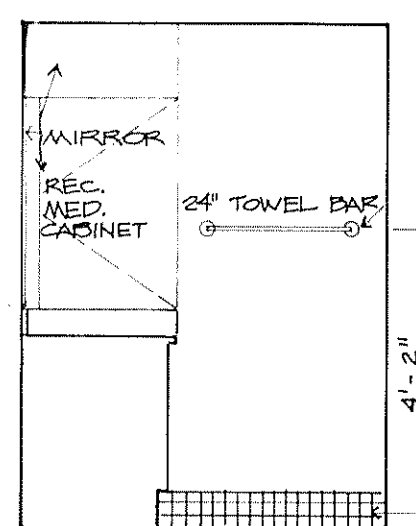
ELEV. 11



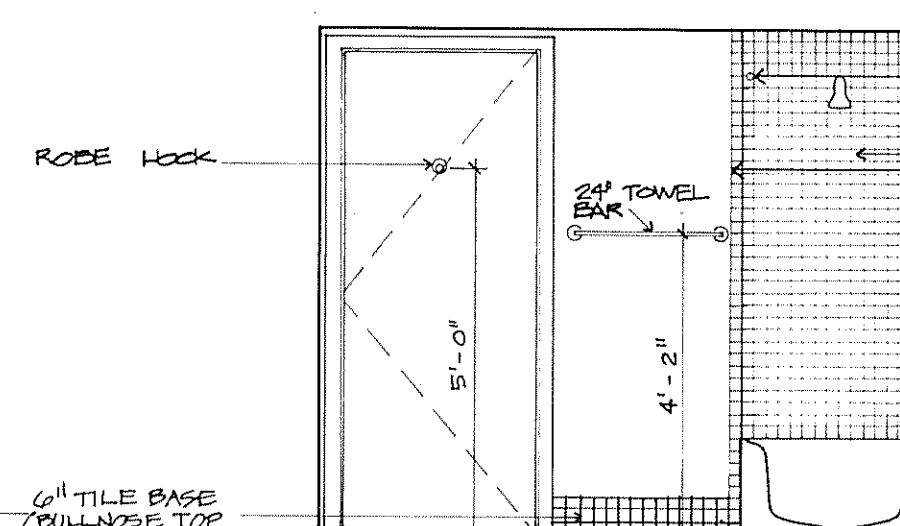
ELEV. 12



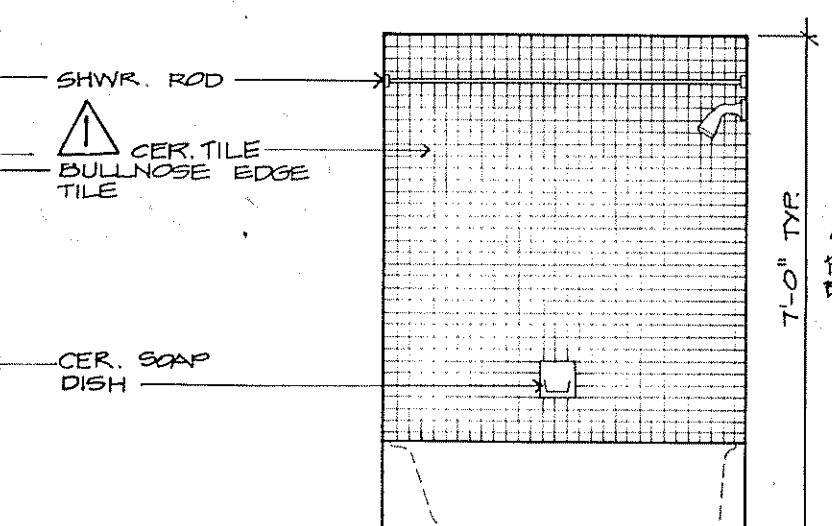
ELEV. 13
UNITS A-R, A+R
REVERSE A-L, A+L
BATH 2



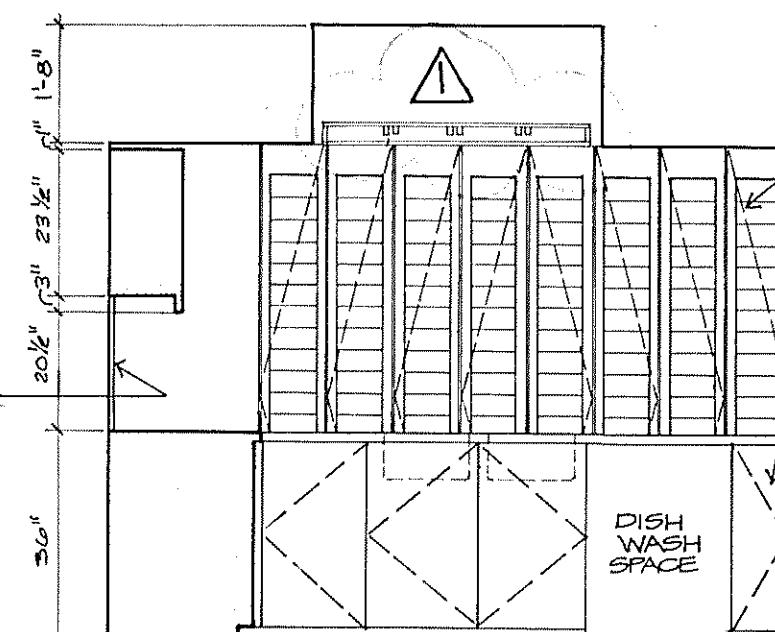
ELEV. 14



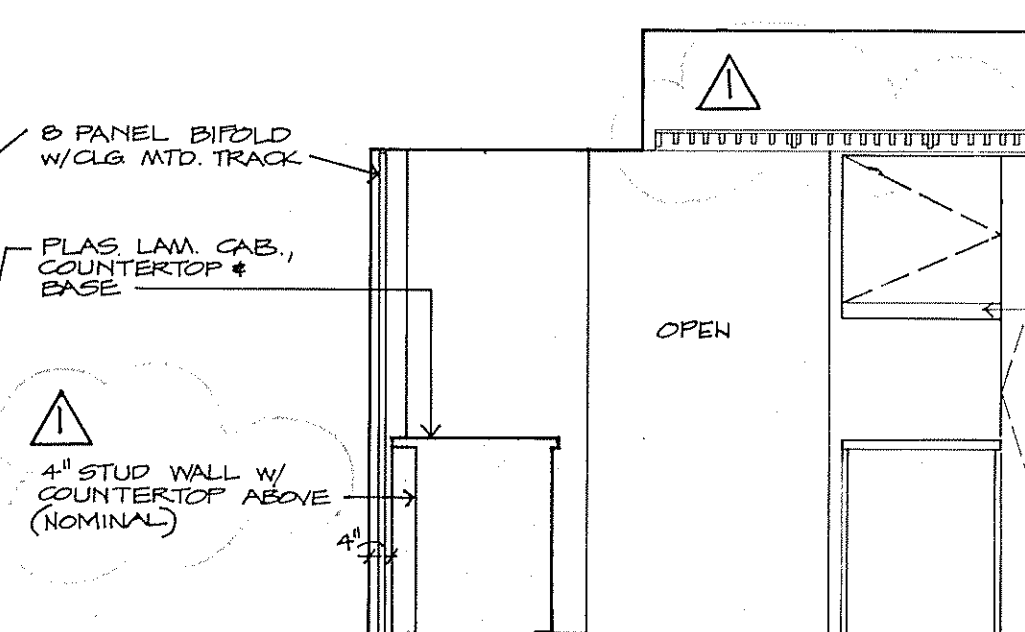
ELEV. 15



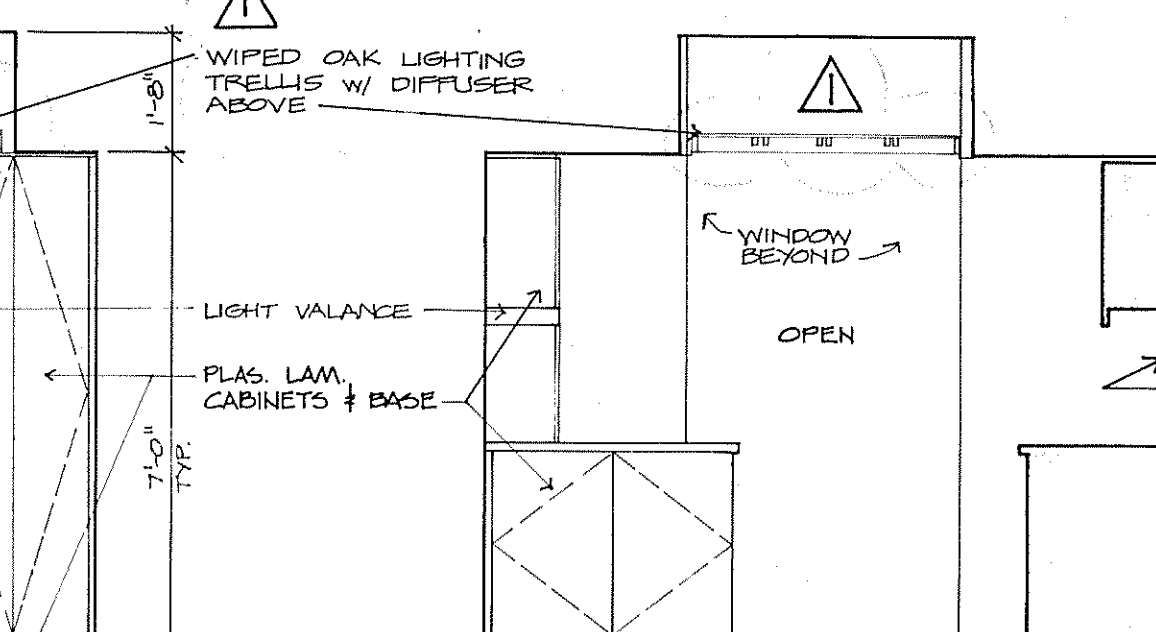
ELEV. 16



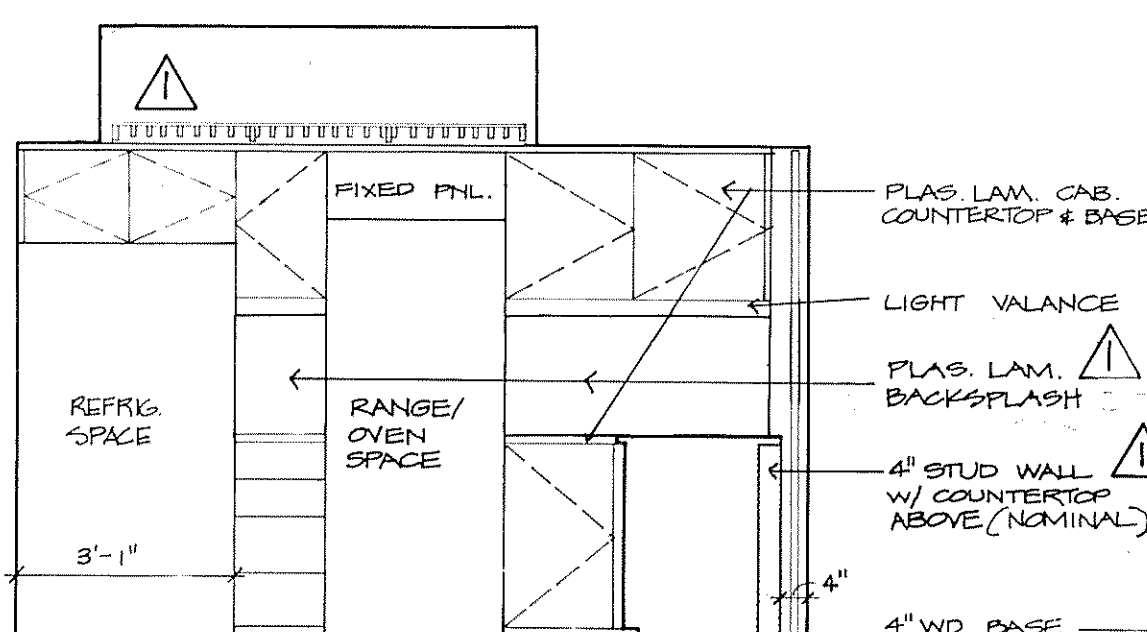
ELEV. 17
UNITS B-R, B+R
REVERSE B-L, B+L
KITCHEN



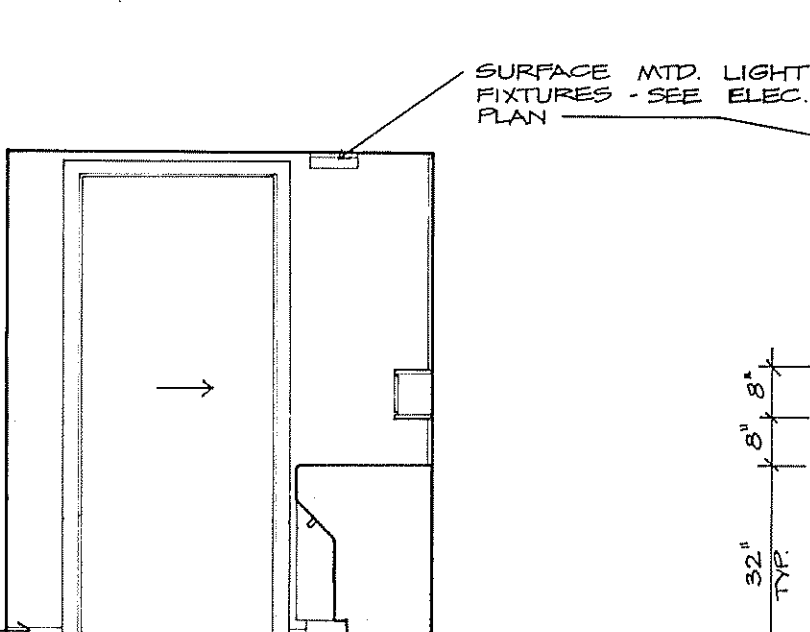
ELEV. 18



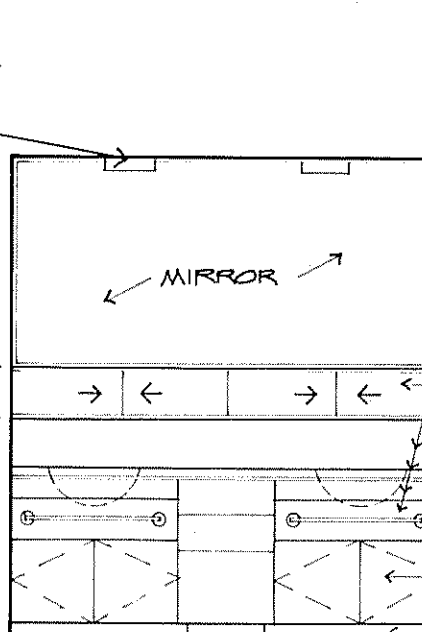
ELEV. 19



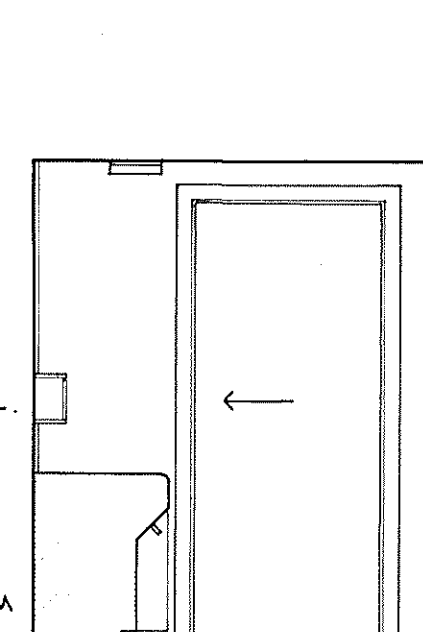
ELEV. 20



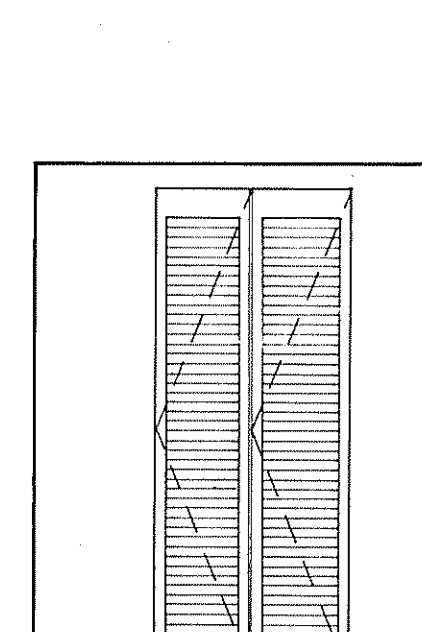
ELEV. 21
UNITS B-R, B+R
REVERSE B-L, B+L
DRESSING



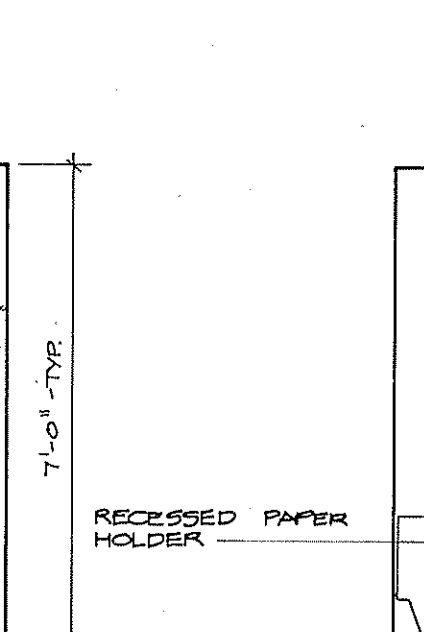
ELEV. 22



ELEV. 23

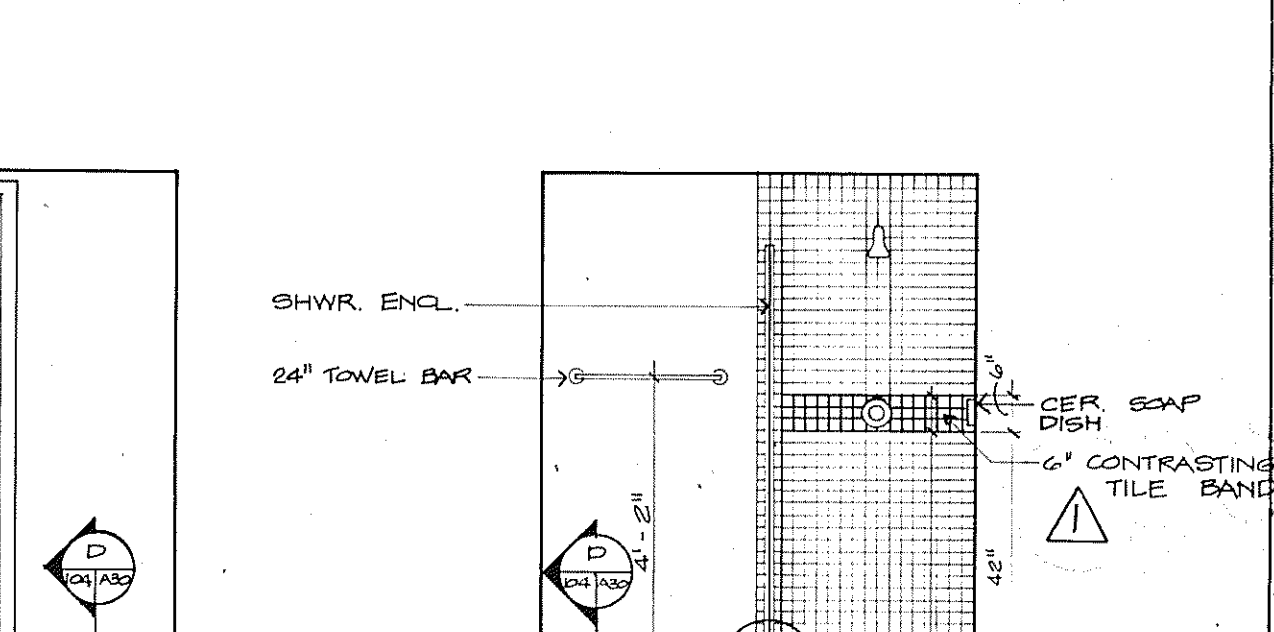


ELEV. 24



ELEV. 25

ELEV. 25
UNIT B-R, B+R
REVERSE B-L, B+L
BATH 1



ELEV. 26

SUNSET BEACH
SOFTENING BOAT KEY
 INTERIOR ELEVATIONS 3/8" = 1'-0"
 ARVIDA CORPORATION · EDWARD J SEIBERT AIA ARCHITECT & PLANNER P.A. · THE SWA GROUP
 BRABHAM KUHN DEBAY CONSULTING ENGINEERS · OLSEN WHITE & ASSOCIATES' STRUCTURAL ENGINEERS · BENNETT & BISHOP INC CONSULTING ENGINEERS & SURVEYORS
 ISSUED 10 DEC 82
 REVISED 4-1-83
 SHEET A-30 OF 37