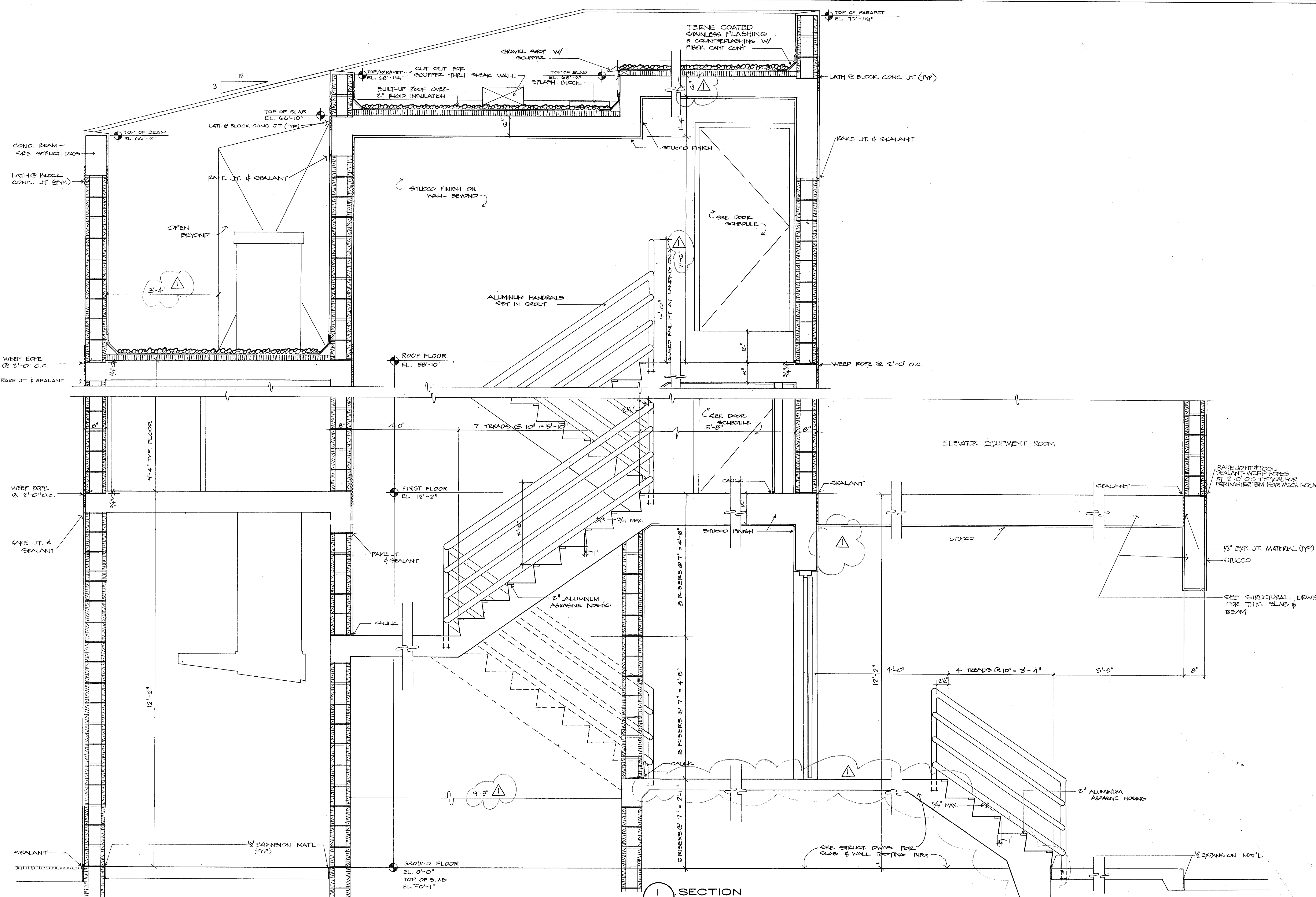


OVERLAYS  
COMPOSITE



SECTION  
24 3/4" = 1'-0"

TOWER 2

SUNSET BEACH  
OFF LONGBOAT KEY

BUILDING I  
STAIR SECTIONS 3/4" = 1'-0"  
ARVIDA CORPORATION, EDWARD J. SEIBERT AIA ARCHITECT & PLANNER P.A. THE SWA GROUP  
BRADHAM, KUHN DEBAY CONSULTING ENGINEERS, OLSEN WHITE & ASSOCIATES STRUCTURAL ENGINEERS, BENNETT & BISHOP INC CONSULTING ENGINEERS & SURVEYORS

ISSUED	10 DEC. 82
REVISED	4-1-83
SHEET	A-24
	OF 3