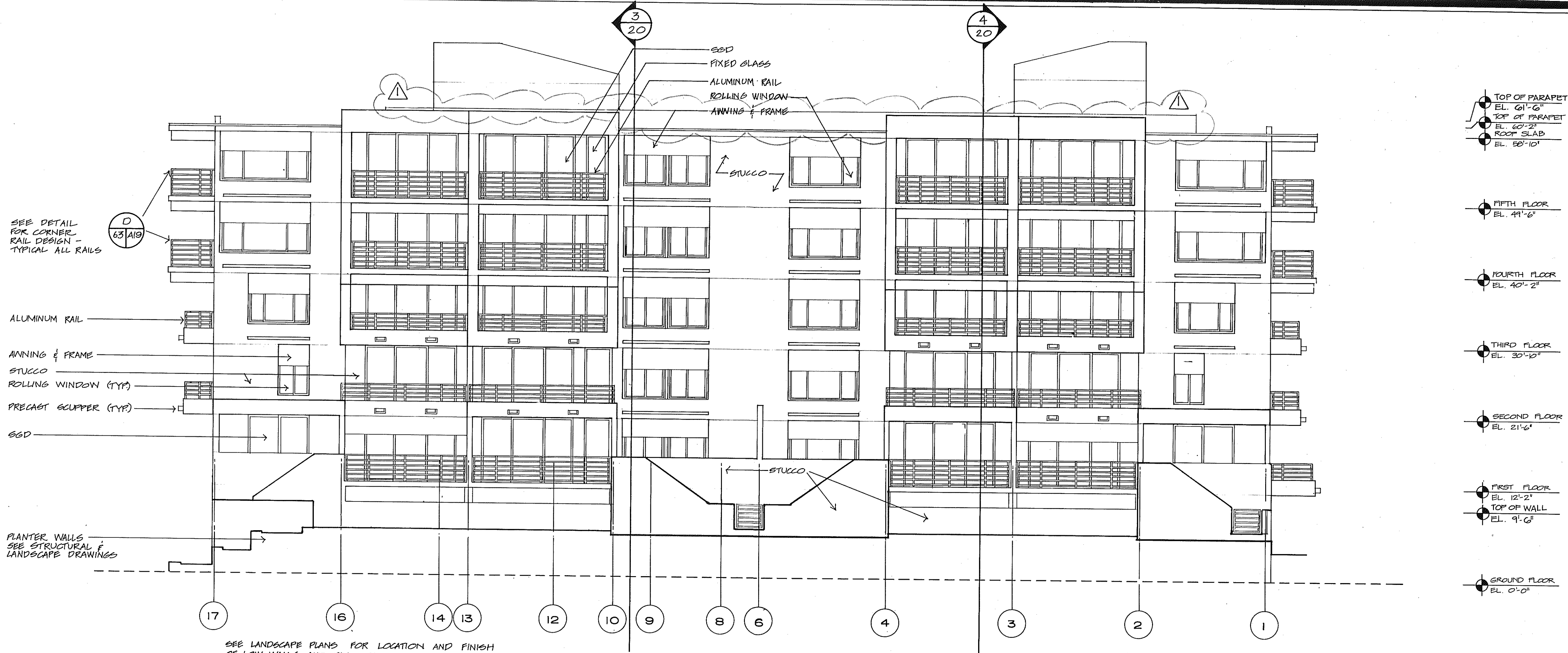
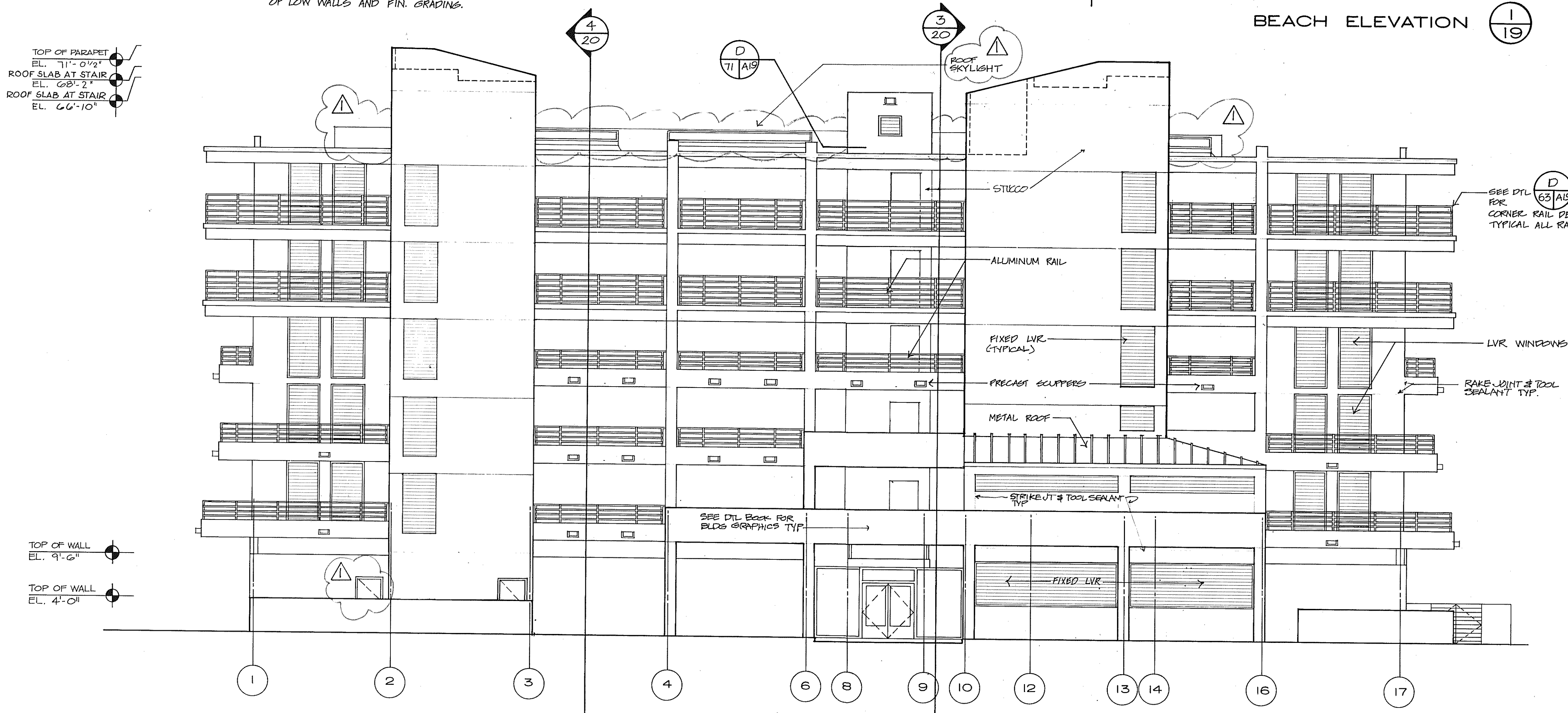


OVERLAYS
COMPOSITE



BEACH ELEVATION 1/19



ENTRY ELEVATION 2/19

- TOP OF PARAPET EL. 61'-6"
- TOP OF PARAPET EL. 60'-2"
- ROOF SLAB EL. 58'-10"
- FIFTH FLOOR EL. 49'-6"
- FOURTH FLOOR EL. 40'-2"
- THIRD FLOOR EL. 30'-10"
- SECOND FLOOR EL. 21'-6"
- FIRST FLOOR EL. 12'-2"
- TOP OF WALL EL. 9'-6"
- GROUND FLOOR EL. 0'-0"

- TOP OF PARAPET AT STAIR EL. 71'-0 1/2"
- ROOF SLAB AT STAIR EL. 68'-2"
- ROOF SLAB AT STAIR EL. 66'-10"
- TOP OF PARAPET AT ELEVATOR EL. 66'-2"
- TOP OF PARAPET EL. 60'-2"
- ROOF SLAB EL. 58'-10"
- FIFTH FLOOR EL. 49'-6"
- FOURTH FLOOR EL. 40'-2"
- THIRD FLOOR EL. 30'-10"
- SECOND FLOOR EL. 21'-6"
- FIRST FLOOR EL. 12'-2"
- TOP OF WALL EL. 9'-6"
- TOP OF WALL EL. 9'-0"
- GROUND FLOOR EL. 0'-0"

SUNSET BEACH BOAT KEY

BUILDING 1 EXTERIOR ELEVATIONS 1/8" = 1'-0"
ARVIDA CORPORATION, EDWARD J. SEBERT AIA ARCHITECT & PLANNER PA, THE SWA GROUP, BRADHAM KUHNS DEBAY CONSULTING ENGINEERS, OLSEN WHITE & ASSOCIATES STRUCTURAL ENGINEERS, BENNETT & BISHOP INC CONSULTING ENGINEERS & SURVEYORS

ISSUED 10 DEC. 82

REVISED 4-1-83

SHEET

A-19

OF 37