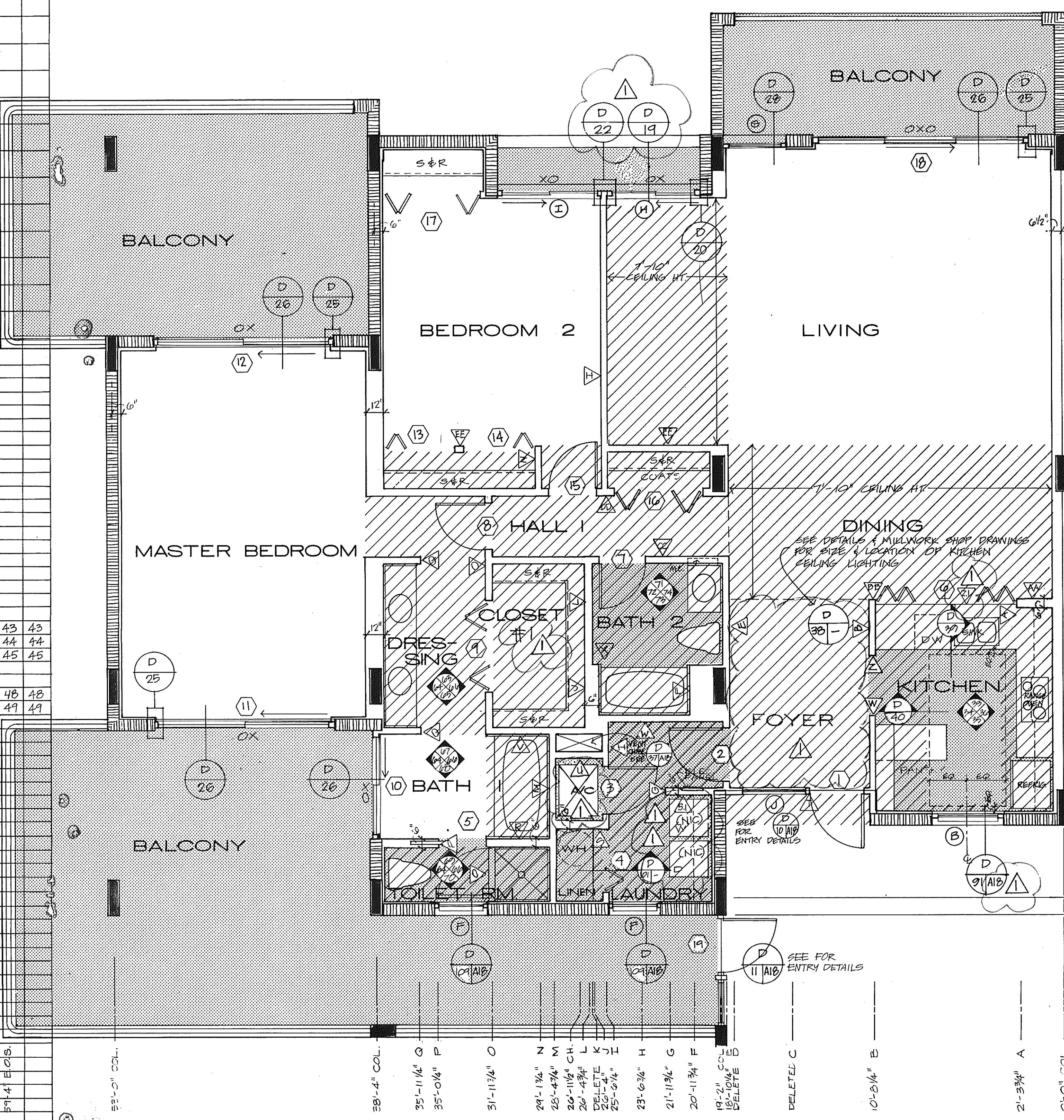


OVERLAYS
COMPOSITE

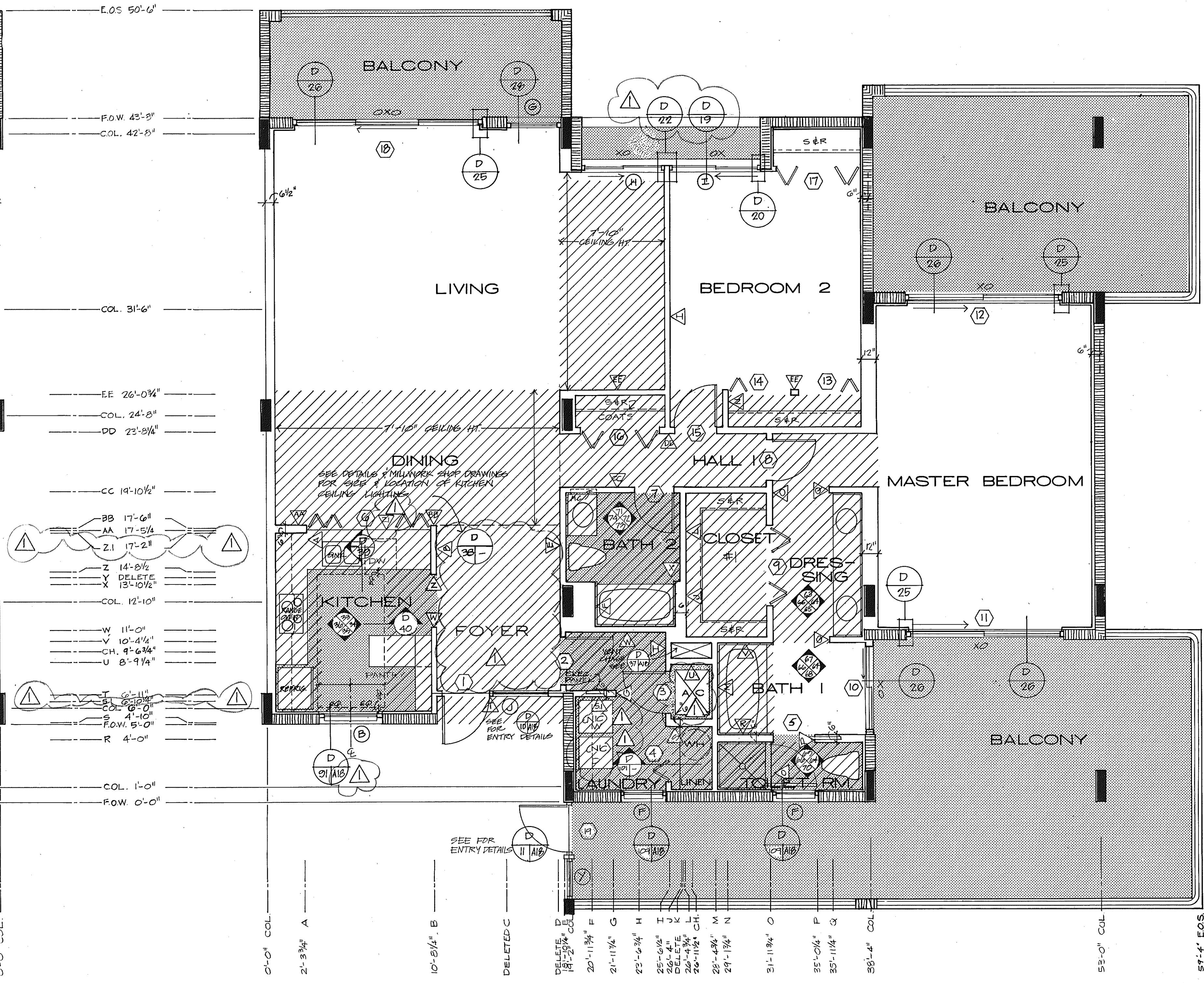
43 43
44 44
45 45
46 46
47 47

59'-4" COL.
59'-4" COL.

UNIT D MOD. LEFT



UNIT D MOD. RIGHT



- NOTES:
- SEE 1/8" BIDS PLANS FOR COLUMN & SHEAR WALL LOCATIONS
 - ALL DROPPED CEILINGS ARE 7'-0" UNLESS OTHERWISE NOTED
 - ALL DIMENSIONS ARE FROM CENTERLINE OF WALL
 - SEE DETAIL BOOKLET FOR DOOR, WINDOW & FINISH SCHEDULES
 - SCREEN DOT TEXTURE DENOTES PAVERS, CER TILE, VINYL TILE OR
 - SEE FINISH SCHEDULE FOR EXACT LOCATIONS
 - VERIFY EXACT LOCATION OF LAYS W/ ARCHITECT
 - DASHED LINE ABOVE THE WASHER/DRYER IS A CONTINUOUS UPPER CABINET W/ DOORS. CONSTRUCTION IS TO BE PER THE KITCHEN UPPER CABINETS EXCEPT DELETE ALL WD TRIM. PULLS TO BE RECESSED OAK.
8. SEE SHEET A-9 FOR PLAN DIMENSIONING KEY.

SUNSET BEACH
OF LONG BEACH KEY

UNIT D MOD. PLANS 1/4" = 1'-0"

ARVADA CORPORATION · EDWARD J. SCHEERT AIA ARCHITECT & PLANNER PA · THE SWA GROUP ·
BRABHAM · KUHNS DEBAY CONSULTING ENGINEERS · OLSEN WHITE & ASSOCIATES STRUCTURAL ENGINEERS · BENNETT & BISHOP INC. CONSULTING ENGINEERS & SURVEYORS

ISSUED	10 DEC 82
REVISED	4-1-83
SHEET	A-18
OF 37	