

OVERLAYS
COMPOSITE

16
17
18
19
20

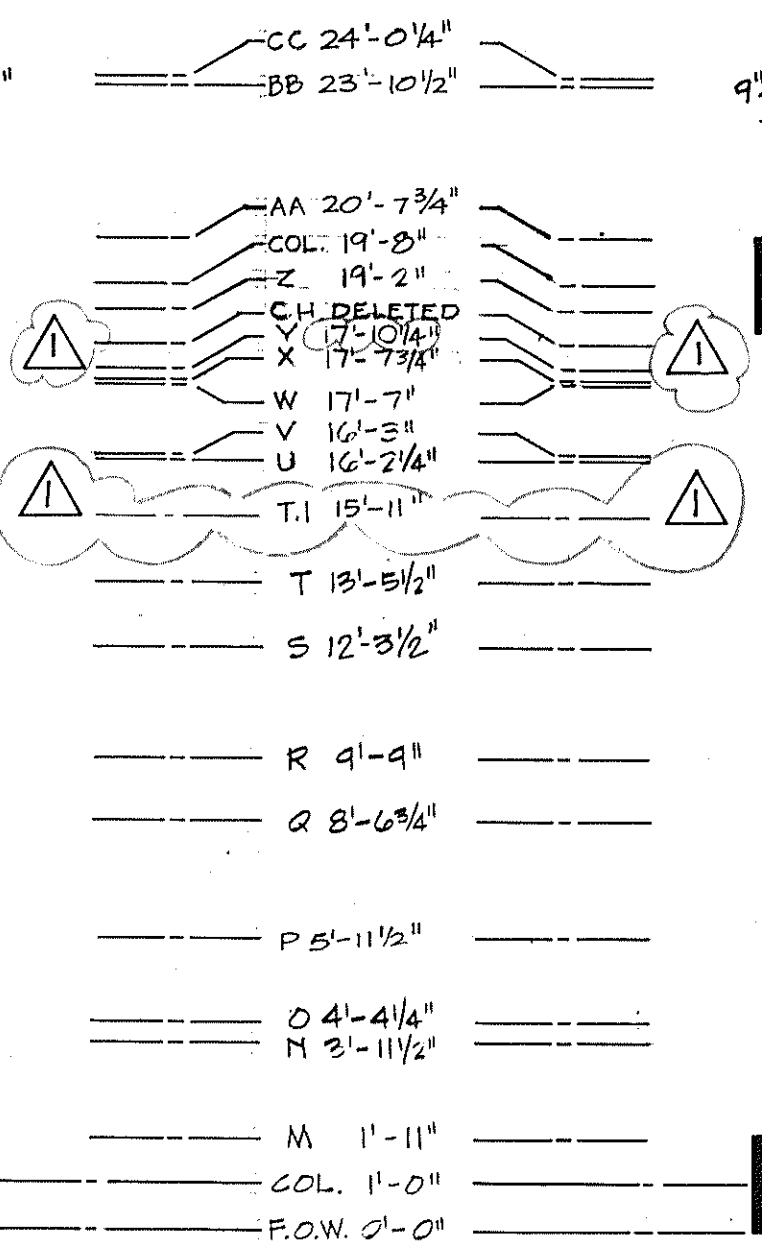
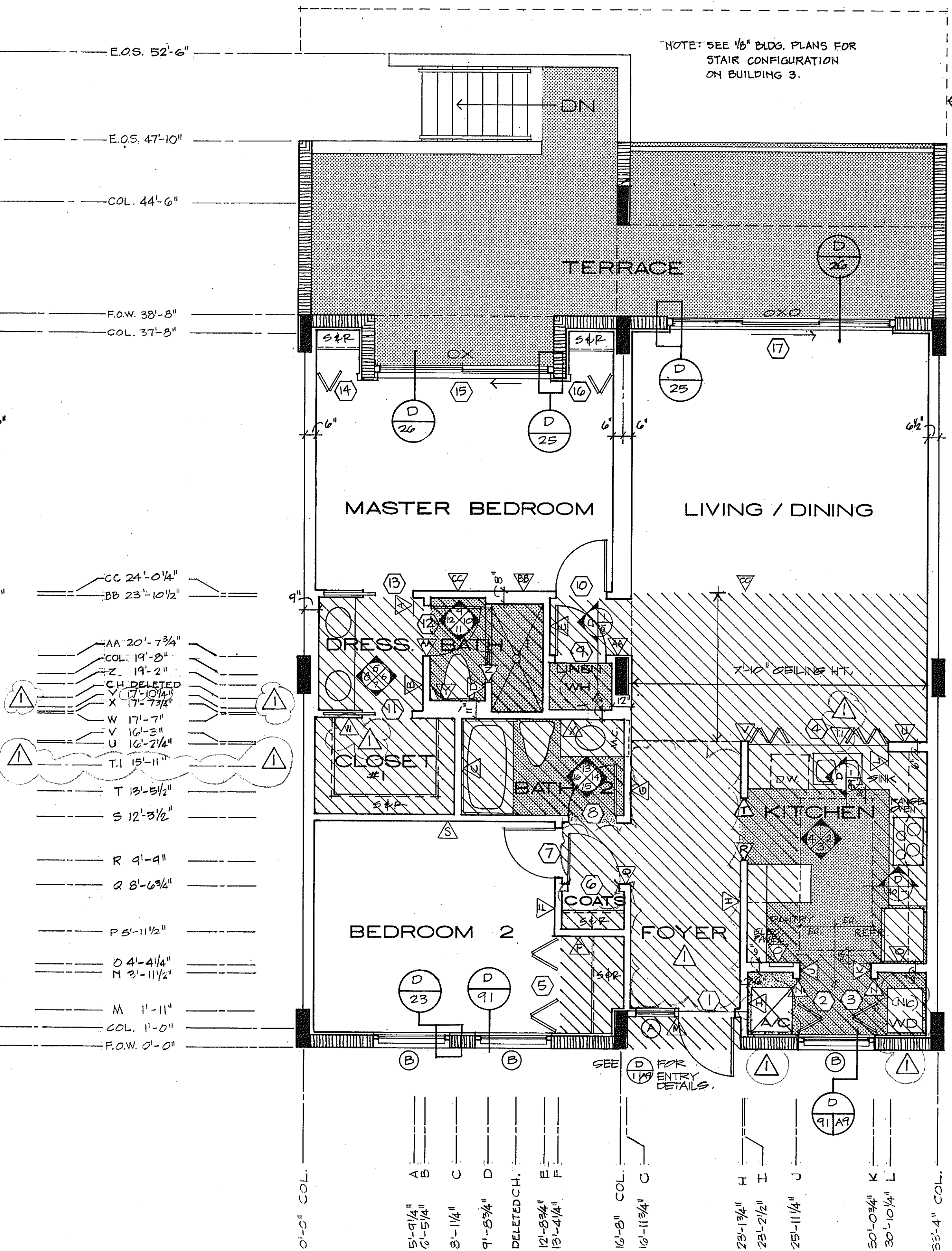
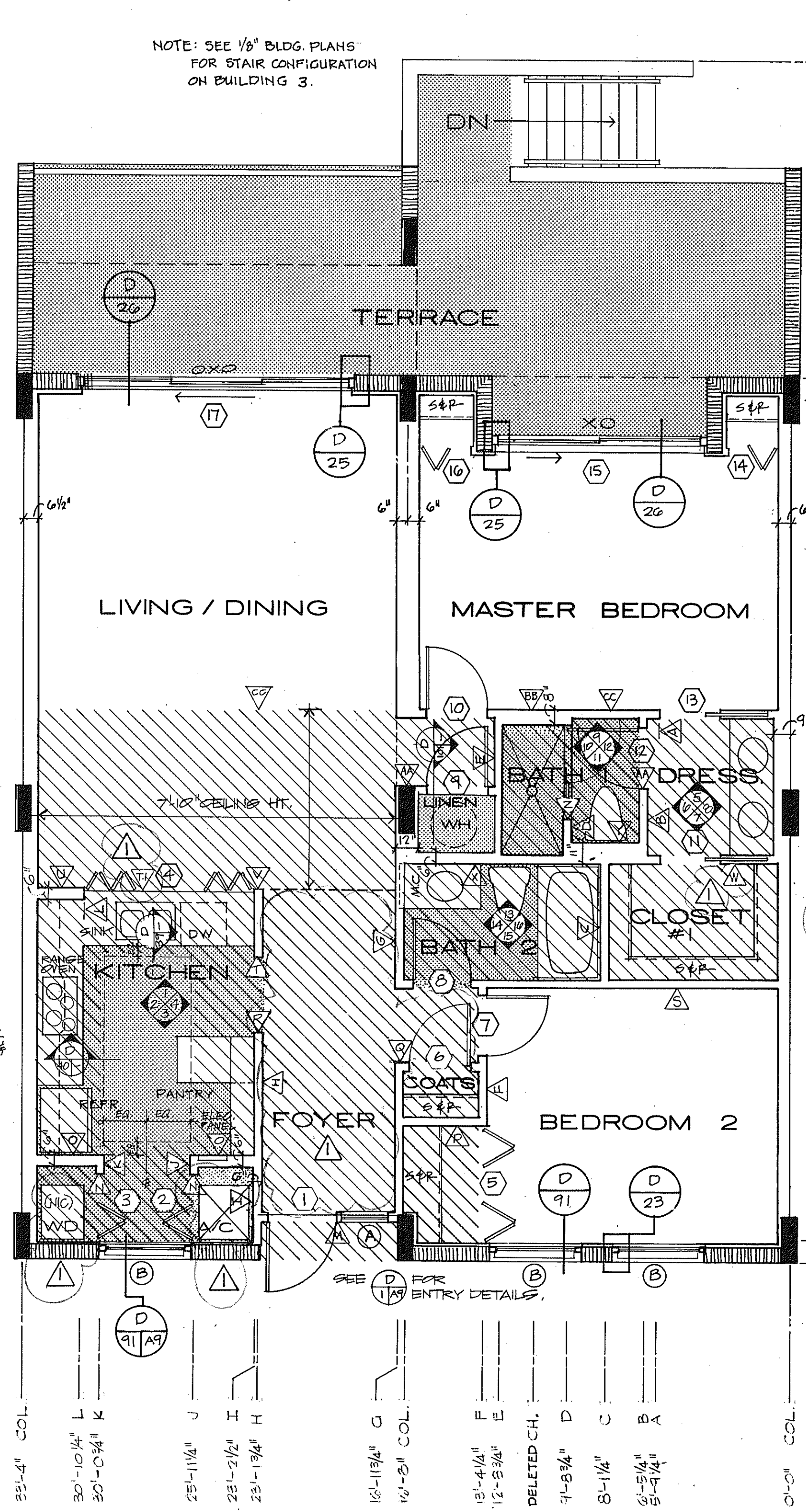
NOTE: SEE 1/8" BLDG. PLANS FOR STAIR CONFIGURATION ON BUILDING 3.

NOTE: SEE 1/8" BLDG. PLANS FOR STAIR CONFIGURATION ON BUILDING 3.

SEE BLDG. 3 1/8" PLANS FOR LOCATION OF UNIT 102.

SEE DETAILS AND MILLWORK SHOP DRAWING FOR SIZE & LOCATION OF KITCHEN CEILING LIGHTING.

SEE DETAILS AND MILLWORK SHOP DRAWING FOR SIZE & LOCATION OF KITCHEN CEILING LIGHTING.

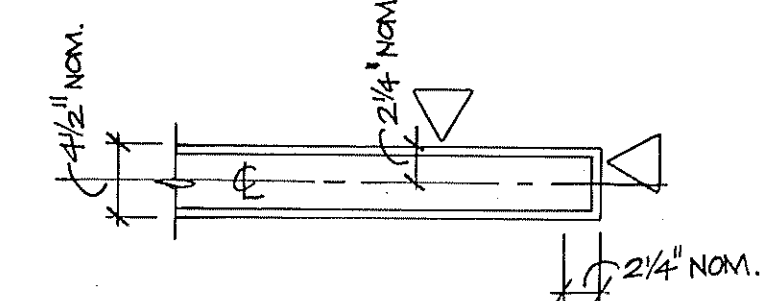


UNIT A+ LEFT

UNIT A+ RIGHT

NOTES

- SEE 1/8" BLDG. PLANS FOR COL. & SHEAR WALL LOCATIONS.
- ALL DROPPED CEILINGS ARE 7'-0" UNLESS OTHERWISE NOTED.
- ALL DIMENSIONS ARE FROM CENTERLINE OF WALL.
- SEE DETAIL BOOKLET FOR DOOR, WINDOW & FINISH SCHEDULES.
- SCREEN DOT TEXTURE DENOTES PAVERS, CER. TILE, VINYL TILE & VAT. SEE FINISH SCHEDULES FOR EXACT LOCATIONS.
- VERIFY EXACT LOCATION OF LAVATORIES W/ ARCHITECT



DIMENSIONING KEY

SUNSET BEACH
OF LONG BEACH KEY

UNIT A+ PLANS 1/4" = 1'-0"
ARVADA CORPORATION · EDWARD J. SEEBERT AIA ARCHITECT & PLANNER PA · THE SWA GROUP
BRABHAM KUHNS DEBAY CONSULTING ENGINEERS · OLSEN WHITE & ASSOCIATES STRUCTURAL ENGINEERS · BENNETT & BISHOP INC CONSULTING ENGINEERS & SURVEYORS

ISSUED
10 DEC. 82

REVISED
4-1-83

SHEET
A-9
OF 37