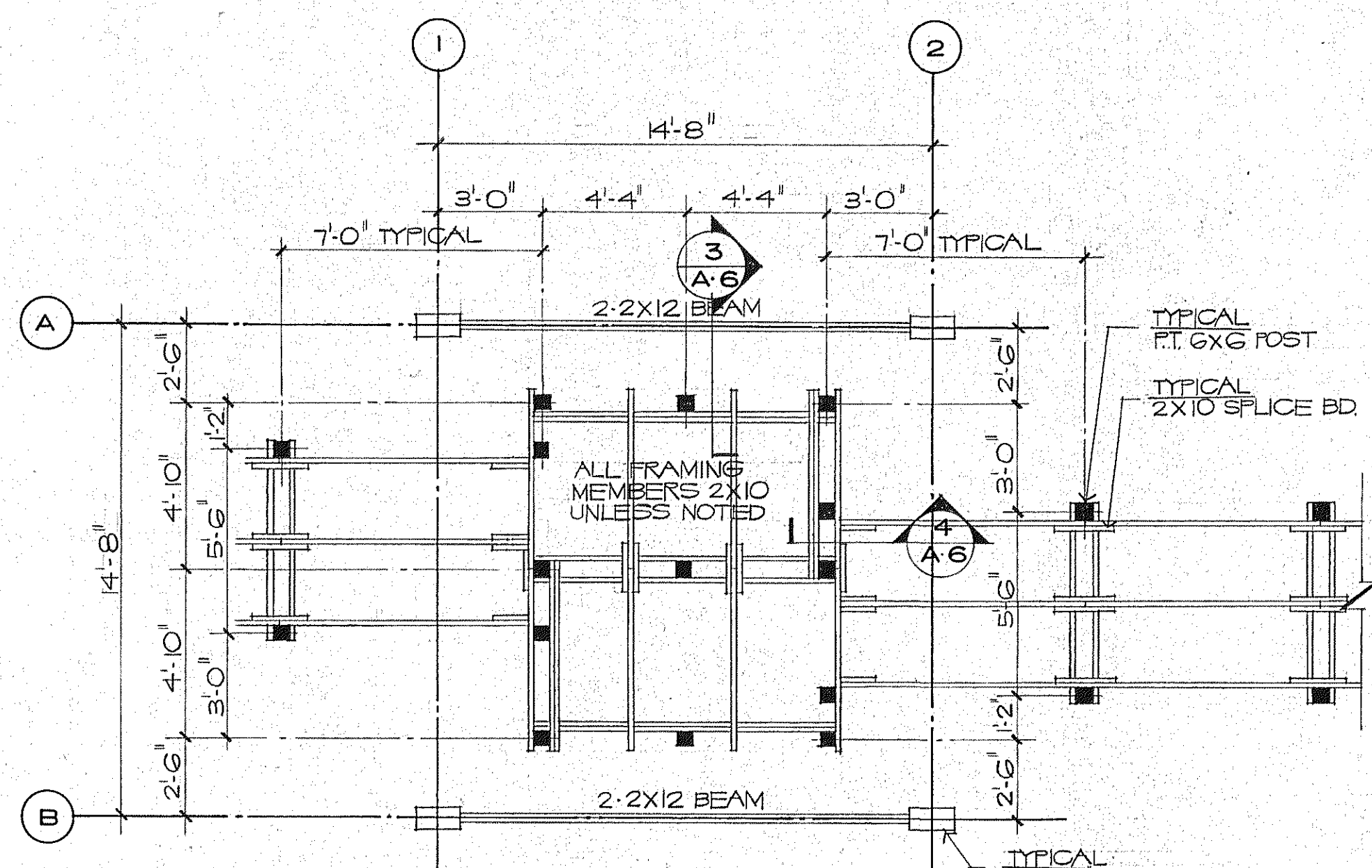


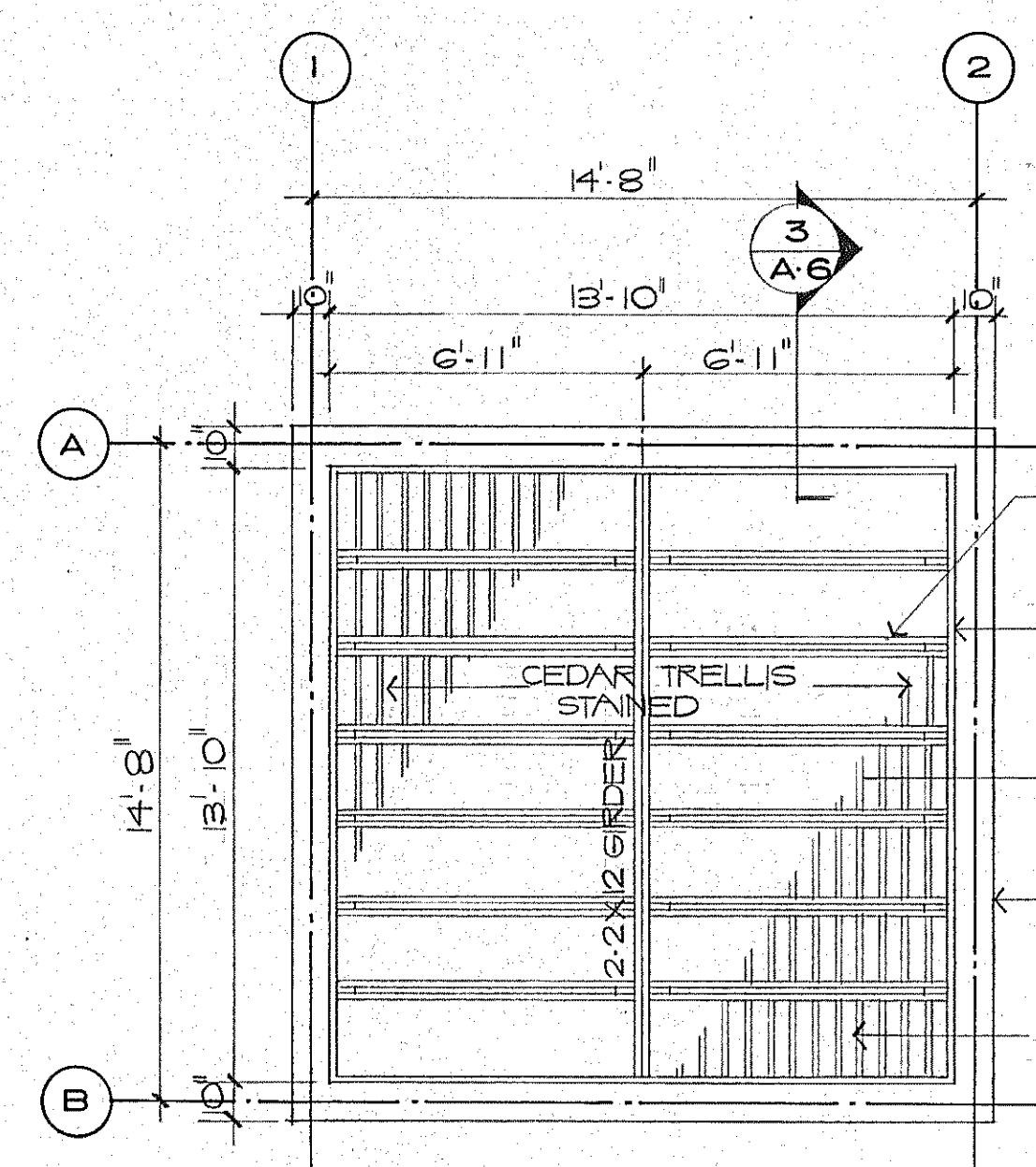
FLOOR PLAN
TYP. 1/4" = 1'-0"

SEE NOTE #7 FOR AREAS TO BE DELETED.



DECK FRAMING PLAN

SEE NOTE #7 FOR AREAS TO BE DELETED.

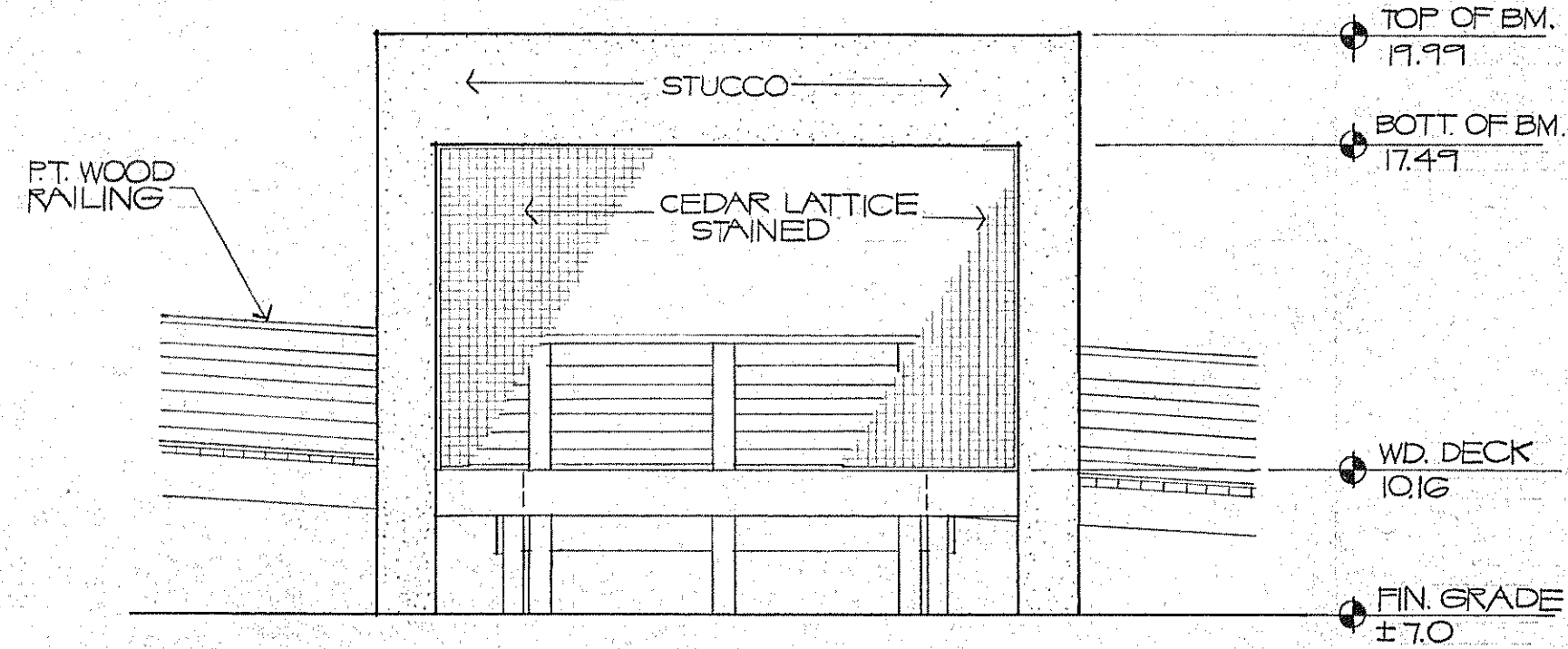


TRELLIS FRAMING PLAN

SEE NOTE #7 FOR AREAS TO BE DELETED.

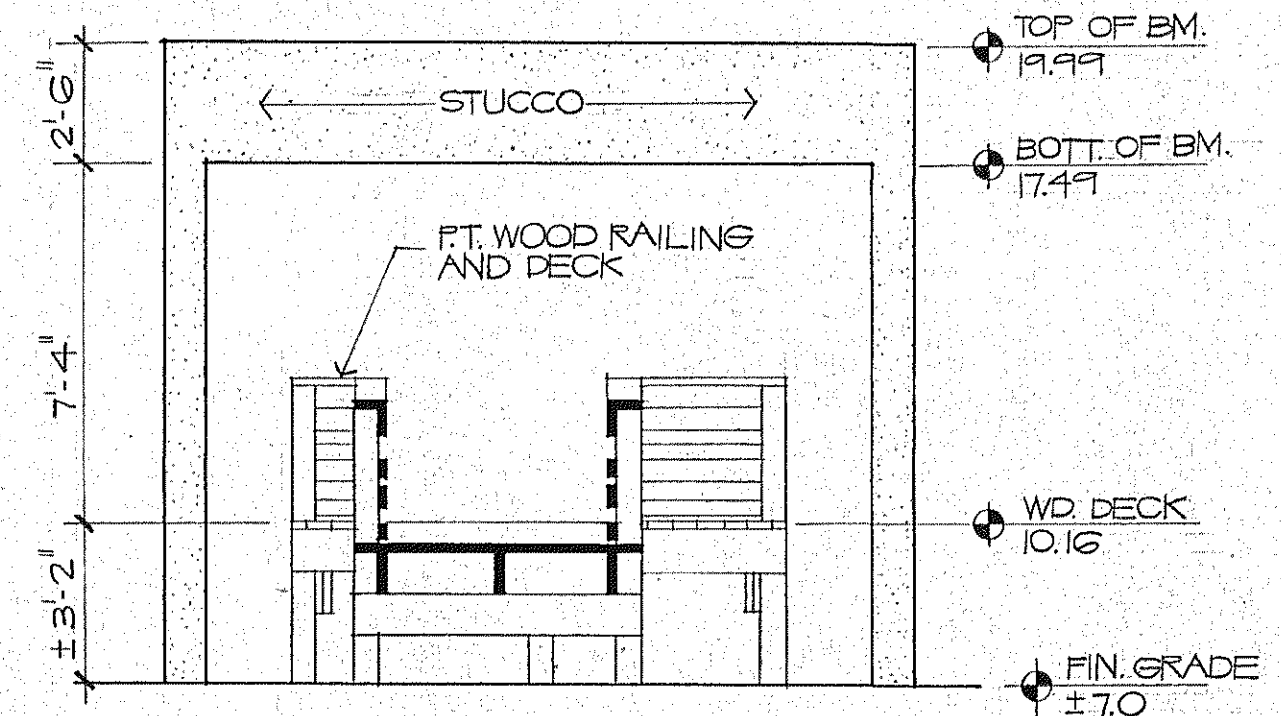
GENERAL NOTES

- REFER TO SITE PLAN FOR LOCATION, CONFIGURATION, AND EXTENT OF DUNE WALKOVER, BEACH CLUB WALL, AND PAVILION.
- REFER TO SITE PLAN AND VERIFY GRADE ELEVATIONS. NOTIFY ARCHITECT OF ANY DISCREPANCIES.
- COMPLY W/ ARCH. SPECIFICATIONS FOR BLDGS. 1, 2, AND 3.
- DUNE WALKOVER AND ELEVATED BOARDWALK SHALL BE CONSTRUCTED IN ACCORDANCE W/ MARINE ADVISORY PROGRAM PUBLICATION 'BEACH DUNE WALKOVER STRUCTURES' DATED NOVEMBER 1981 AND SUBJECT TO APPROVAL BY TOWN OF LONGBOAT KEY.
- ALL METAL CONNECTORS AND EXP. METAL ITEMS SHALL BE HOT DIP GALVANIZED AFTER FABRICATION.
- IN THE EVENT OF ANY DISCREPANCY BETWEEN CONST. DOCUMENTS & THE MARINE ADVISORY PROGRAM NOTED IN GEN. NOTE 4, CONST. DOCUMENTS SHALL GOVERN.
- DELETE ALL CONC. STRUCTURE, WOOD TRELLIS & LATTICE FROM BEACH PAVILION. DUNE WALKOVER PLAN TO REMAIN AS SHOWN.



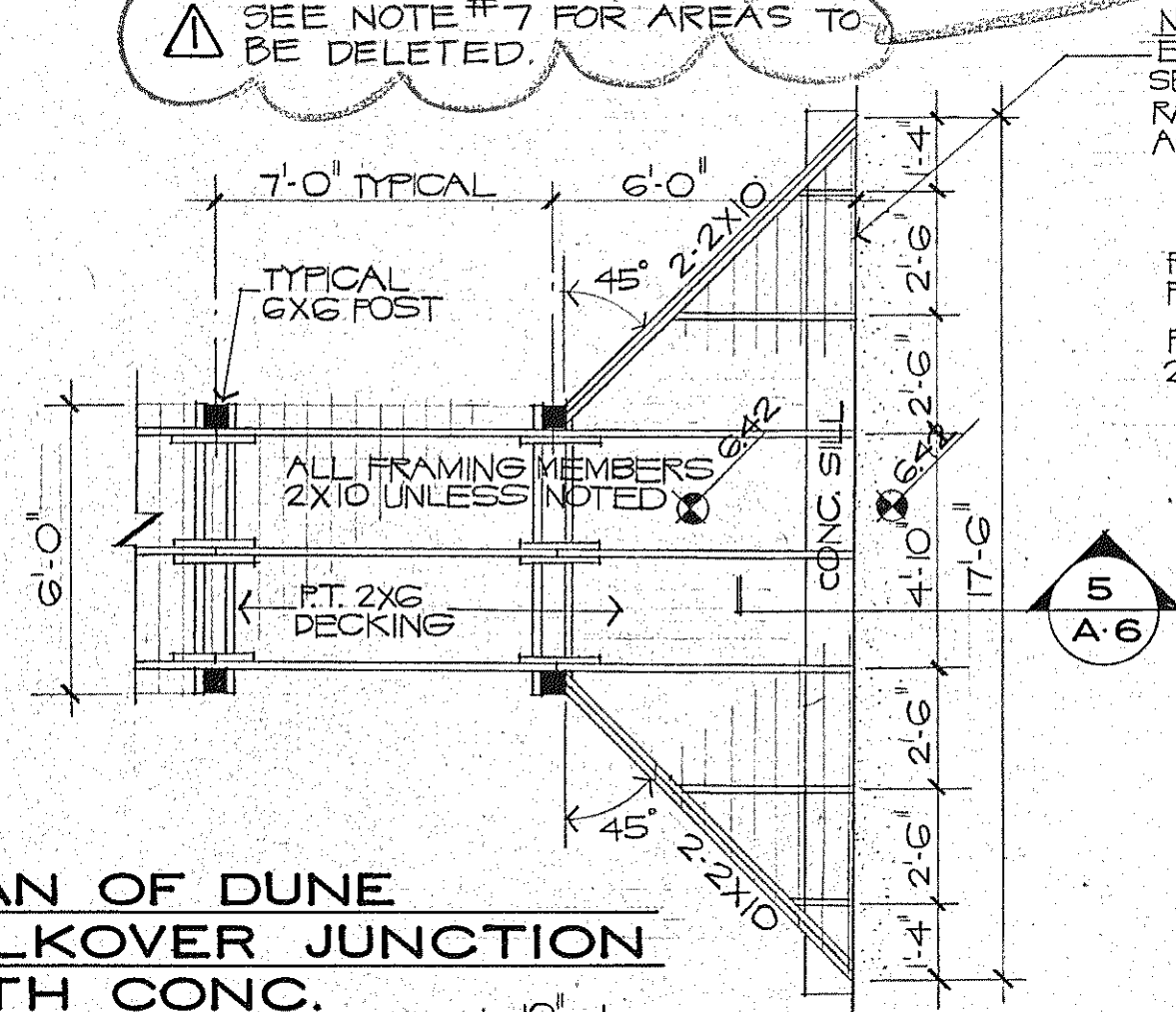
SOUTH ELEVATION
NORTH SIM. REVERSE
1/4" = 1'-0"

SEE NOTE #7 FOR AREAS TO BE DELETED.

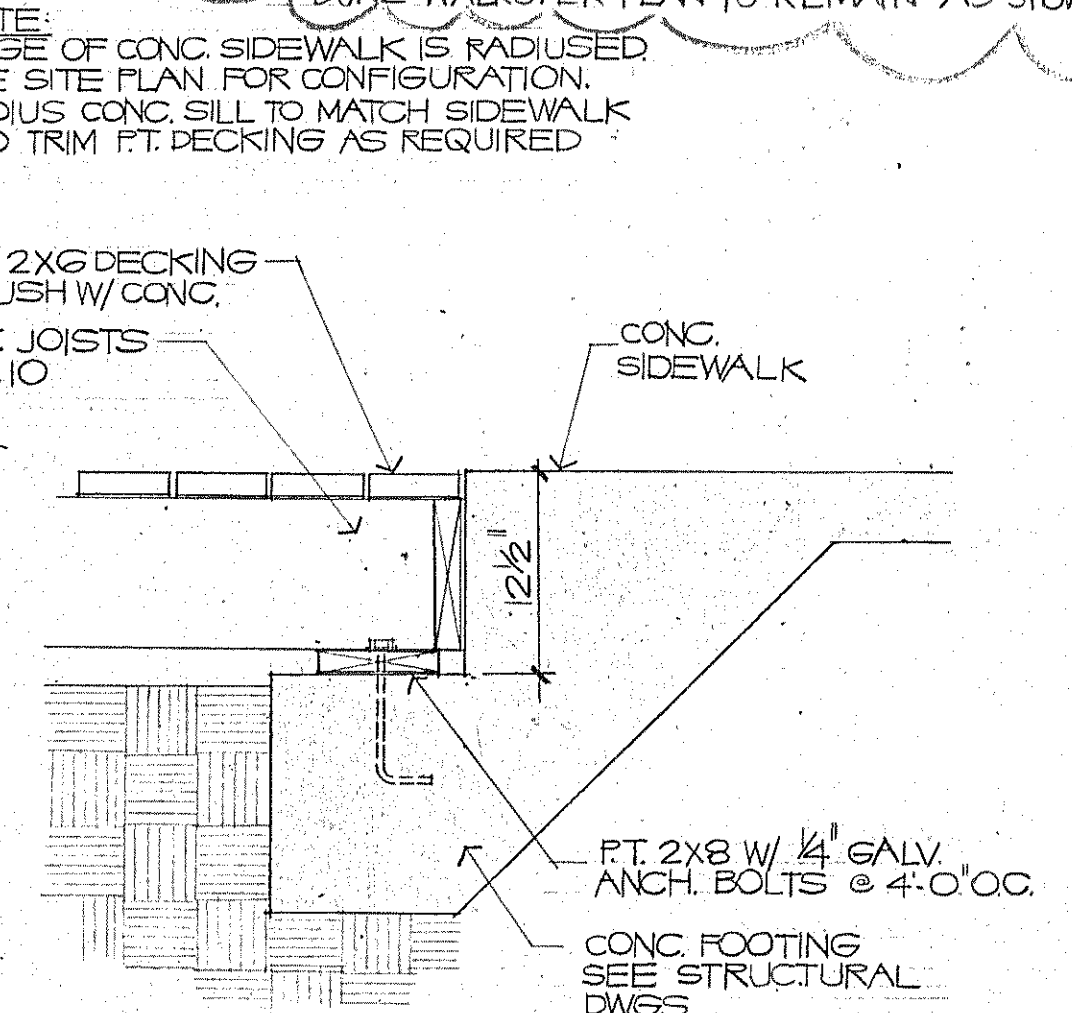


EAST ELEVATION
WEST SIM. REVERSE
1/4" = 1'-0"

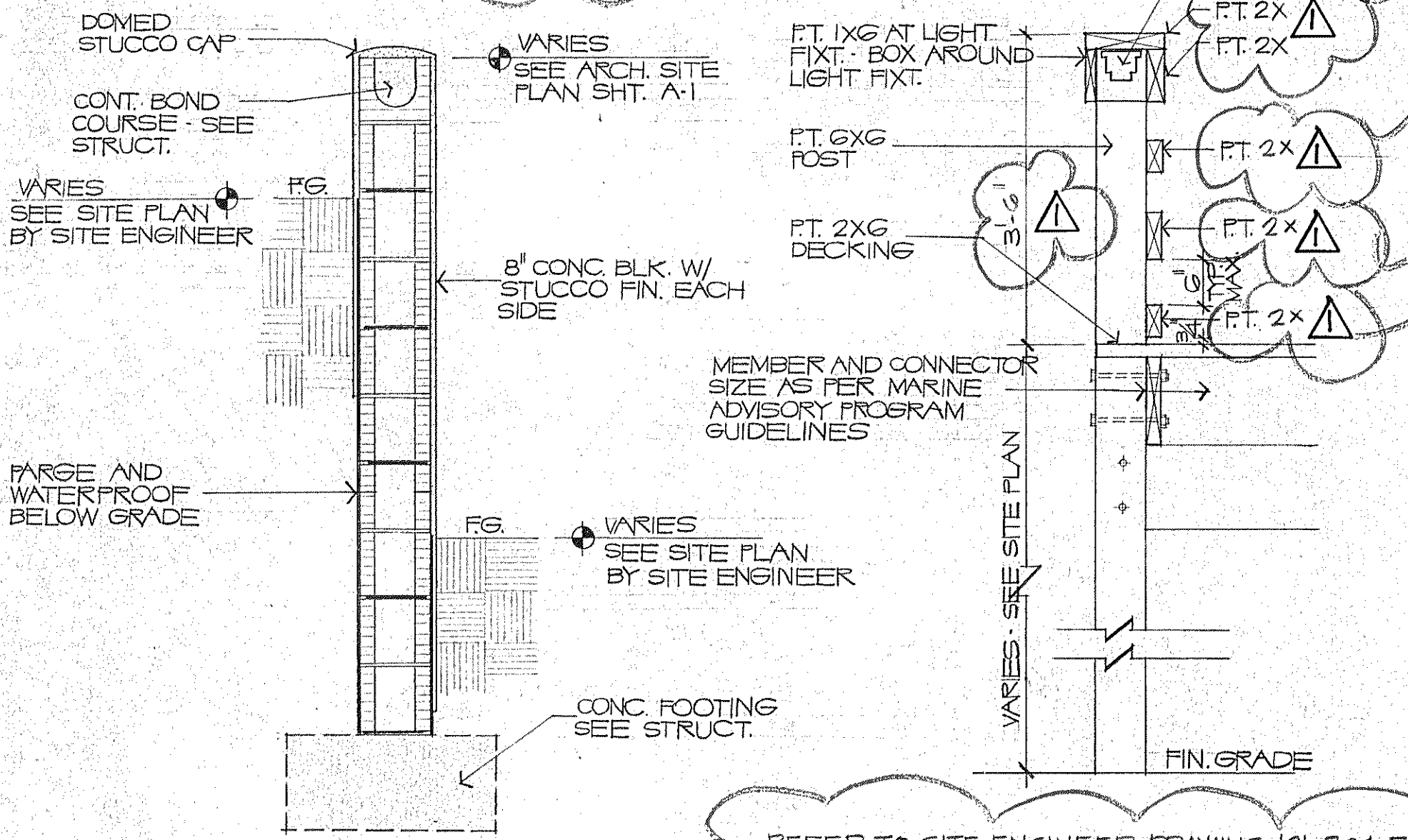
SEE NOTE #7 FOR AREAS TO BE DELETED.



PLAN OF DUNE WALKOVER JUNCTION WITH CONC. SIDEWALK
1/4" = 1'-0"

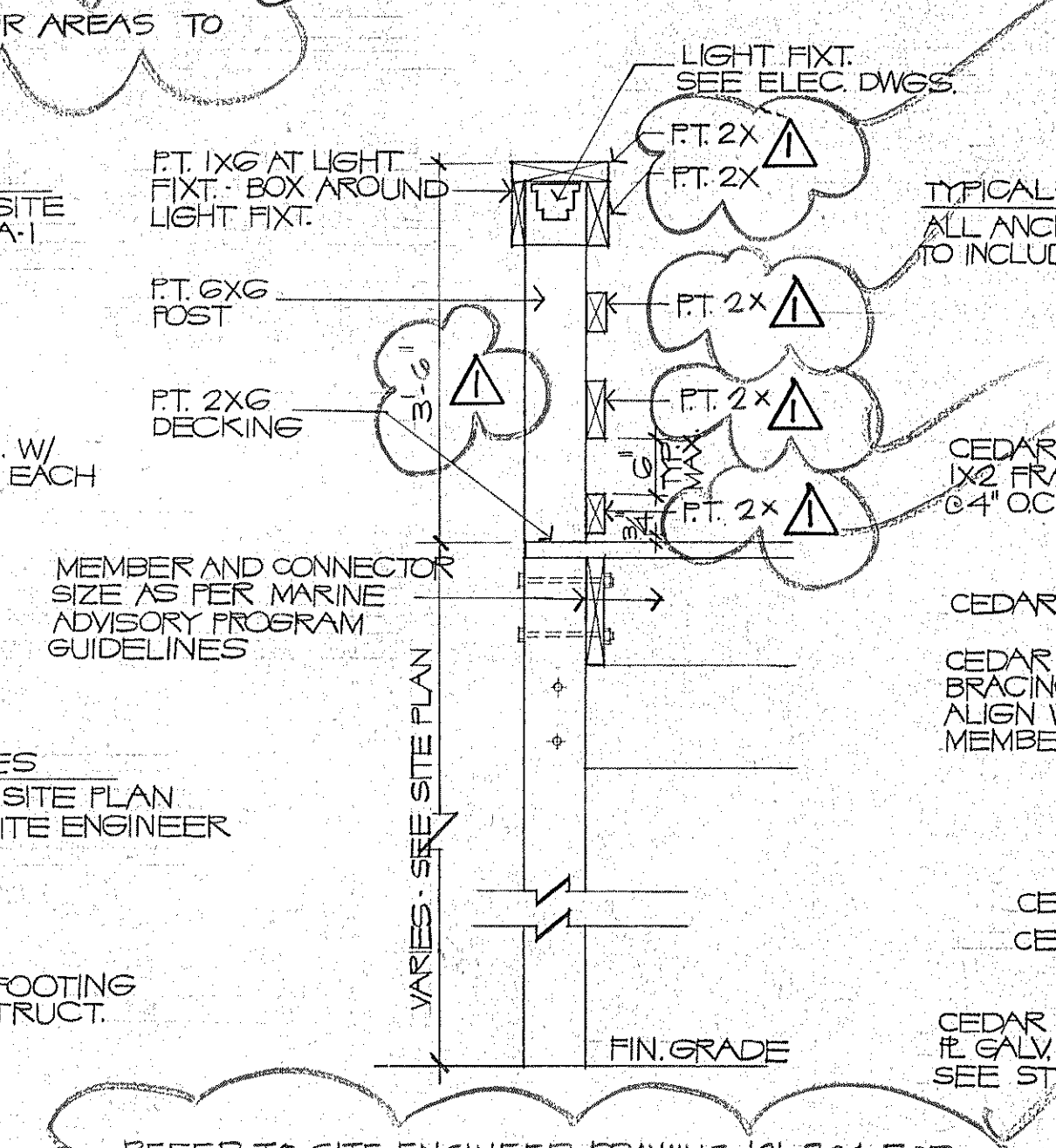


SECTION 5
1" = 1'-0"



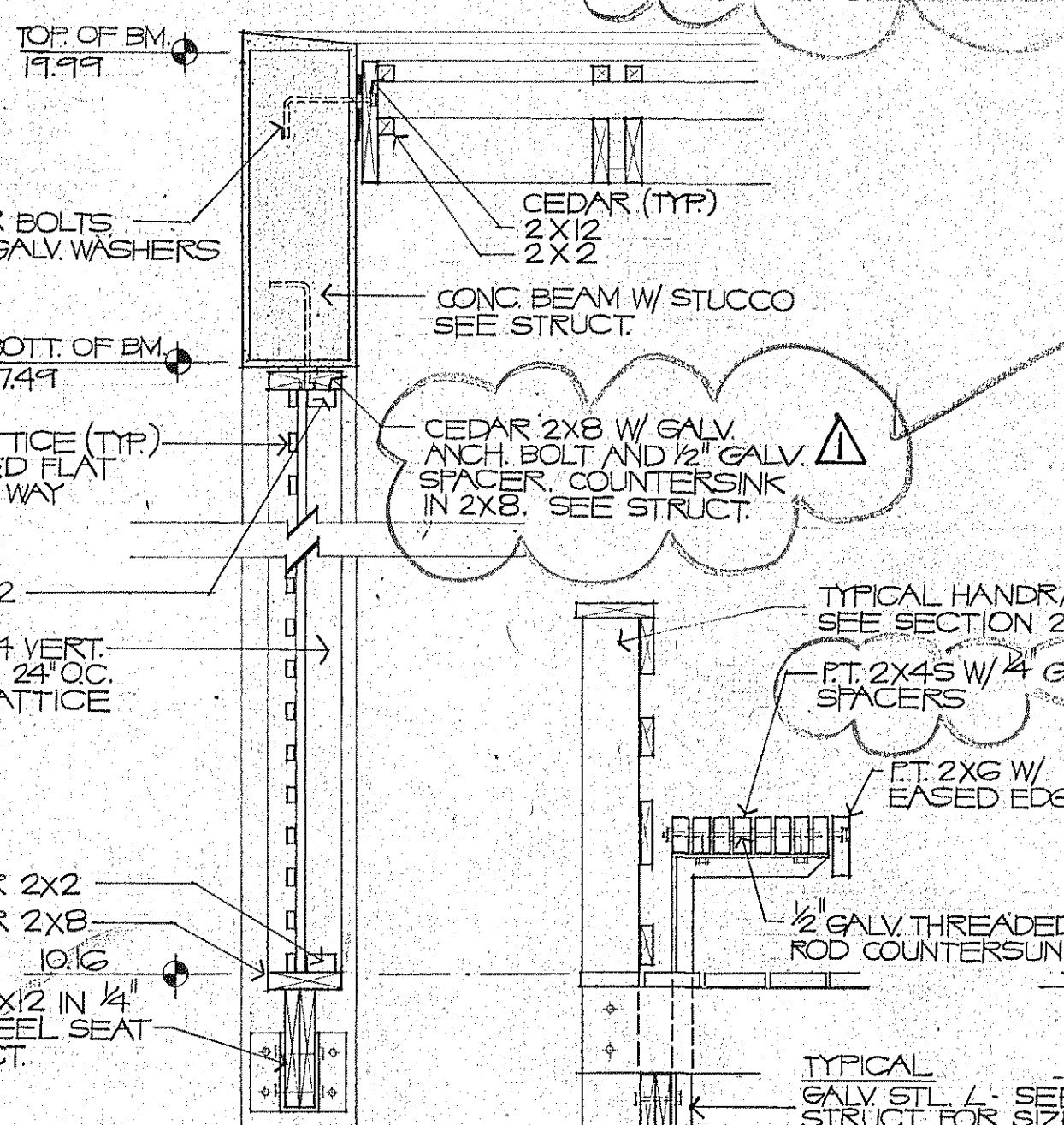
BEACH CLUB WALL SECTION 1
TYP. 3/4" = 1'-0"

SEE NOTE #7 FOR AREAS TO BE DELETED.



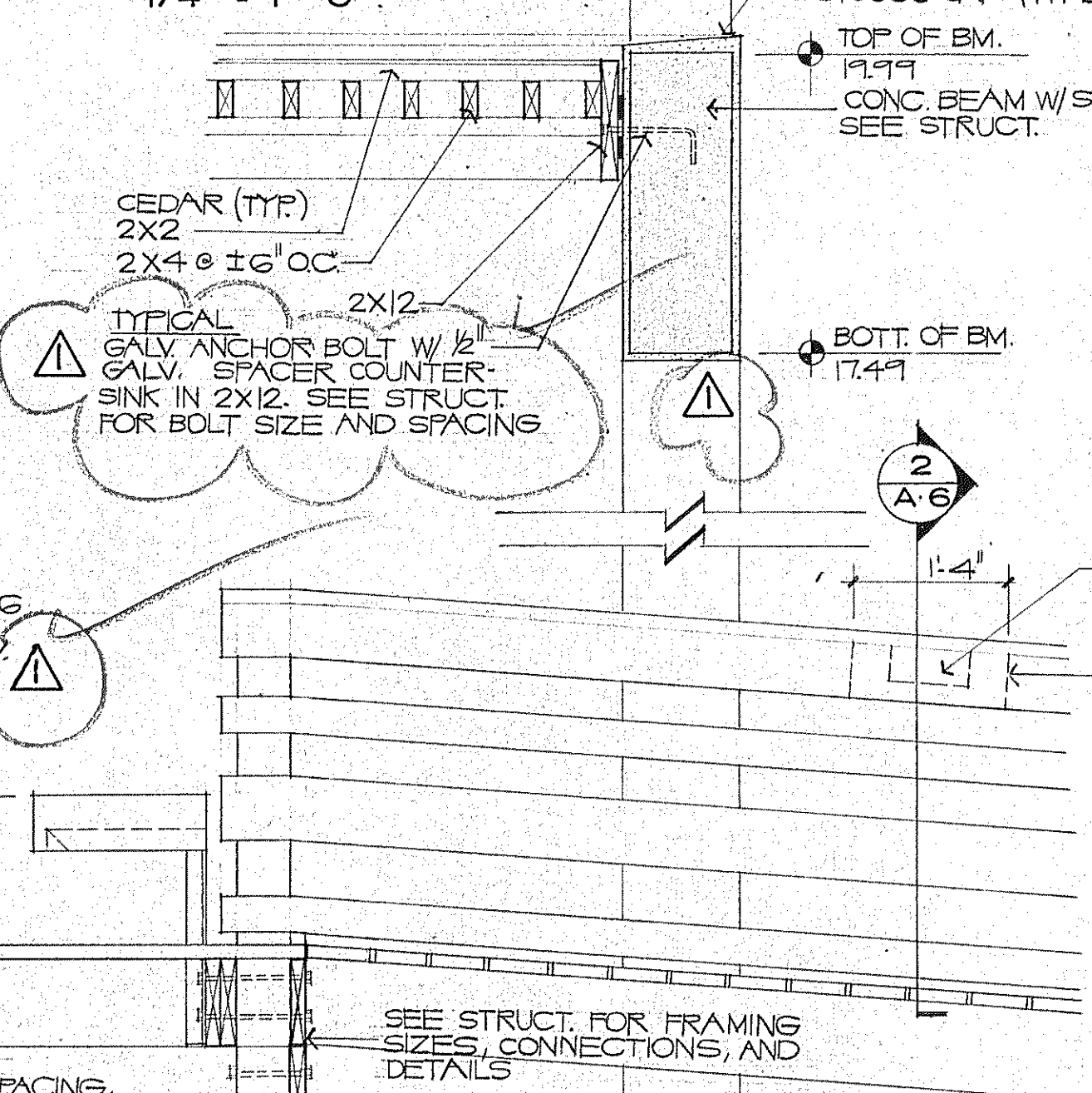
SECTION 2

SEE NOTE #7 FOR AREAS TO BE DELETED.



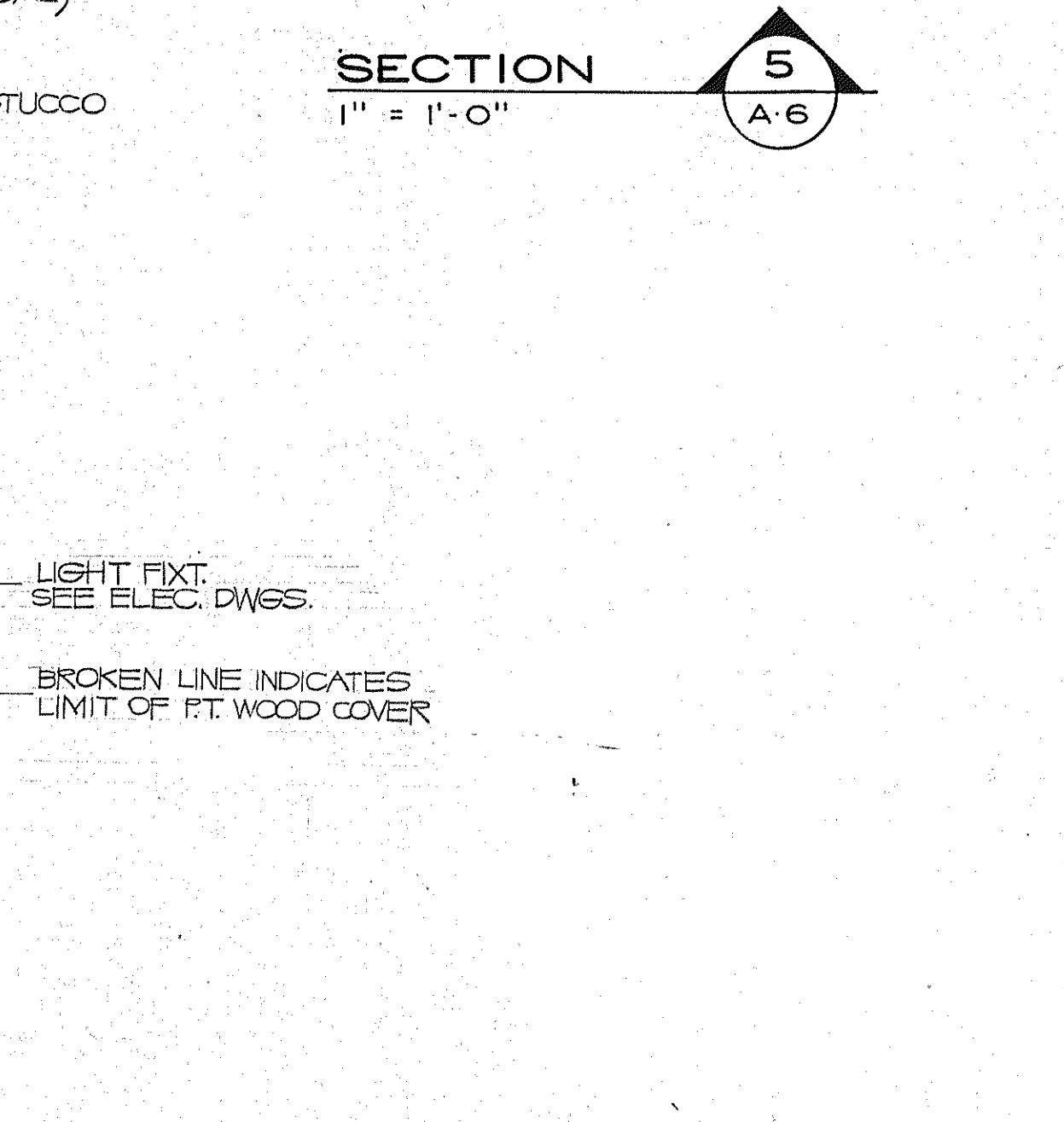
SECTION 3

SEE NOTE #7 FOR AREAS TO BE DELETED.



SECTION 4

SEE NOTE #7 FOR AREAS TO BE DELETED.



SECTION 5

SEE NOTE #7 FOR AREAS TO BE DELETED.

REFER TO SITE ENGINEER DRAWING 191-704 FOR CONST. DETAILS, RAMP ELEV., SECTIONS & NOTES CONCERNING DUNE WALKOVER & ELEVATED BOARDWALK.

ISSUED	DEC. 10, 1992
REVISED	4-1-93
SHEET	A-6
	6 OF 6