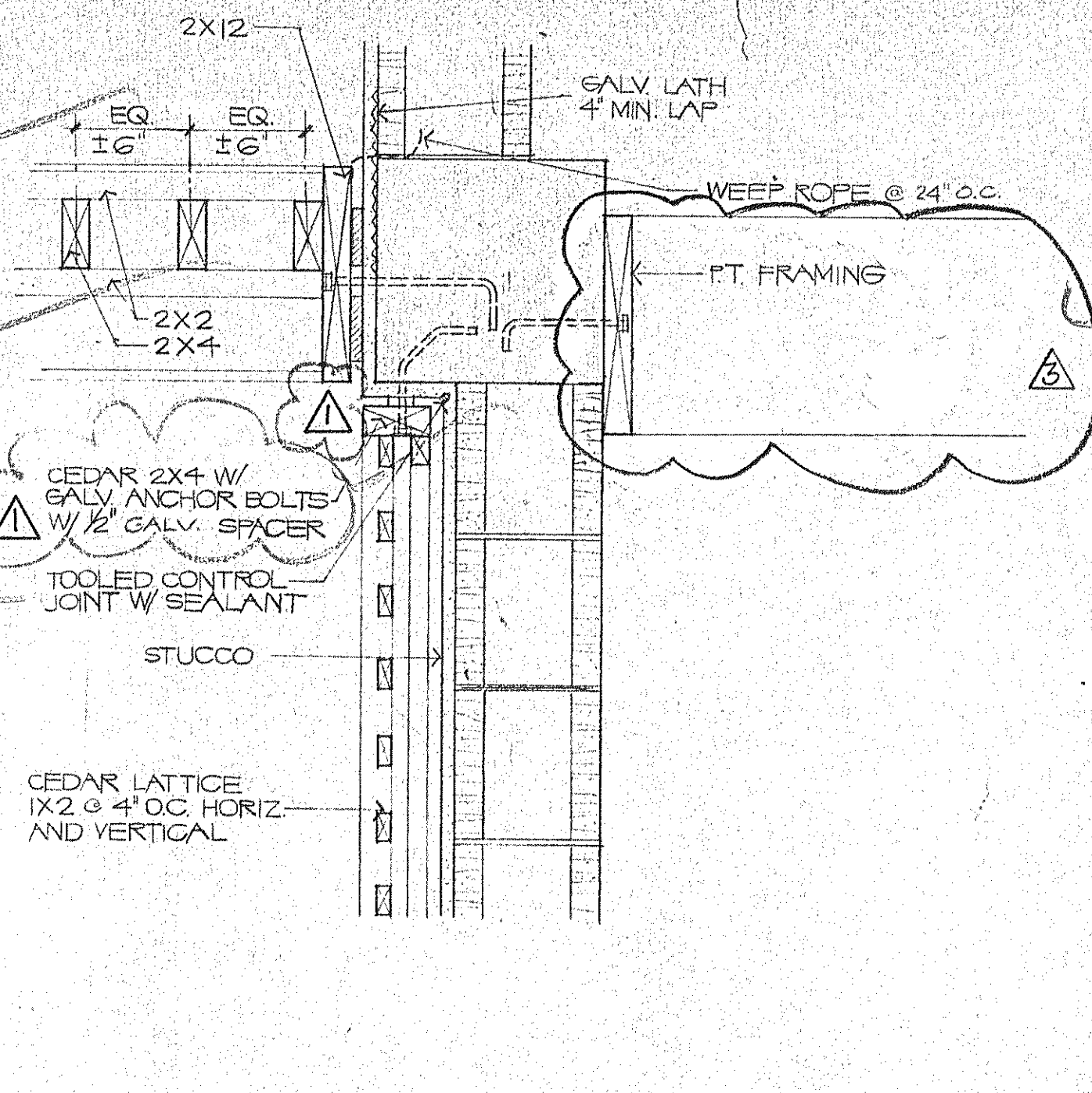
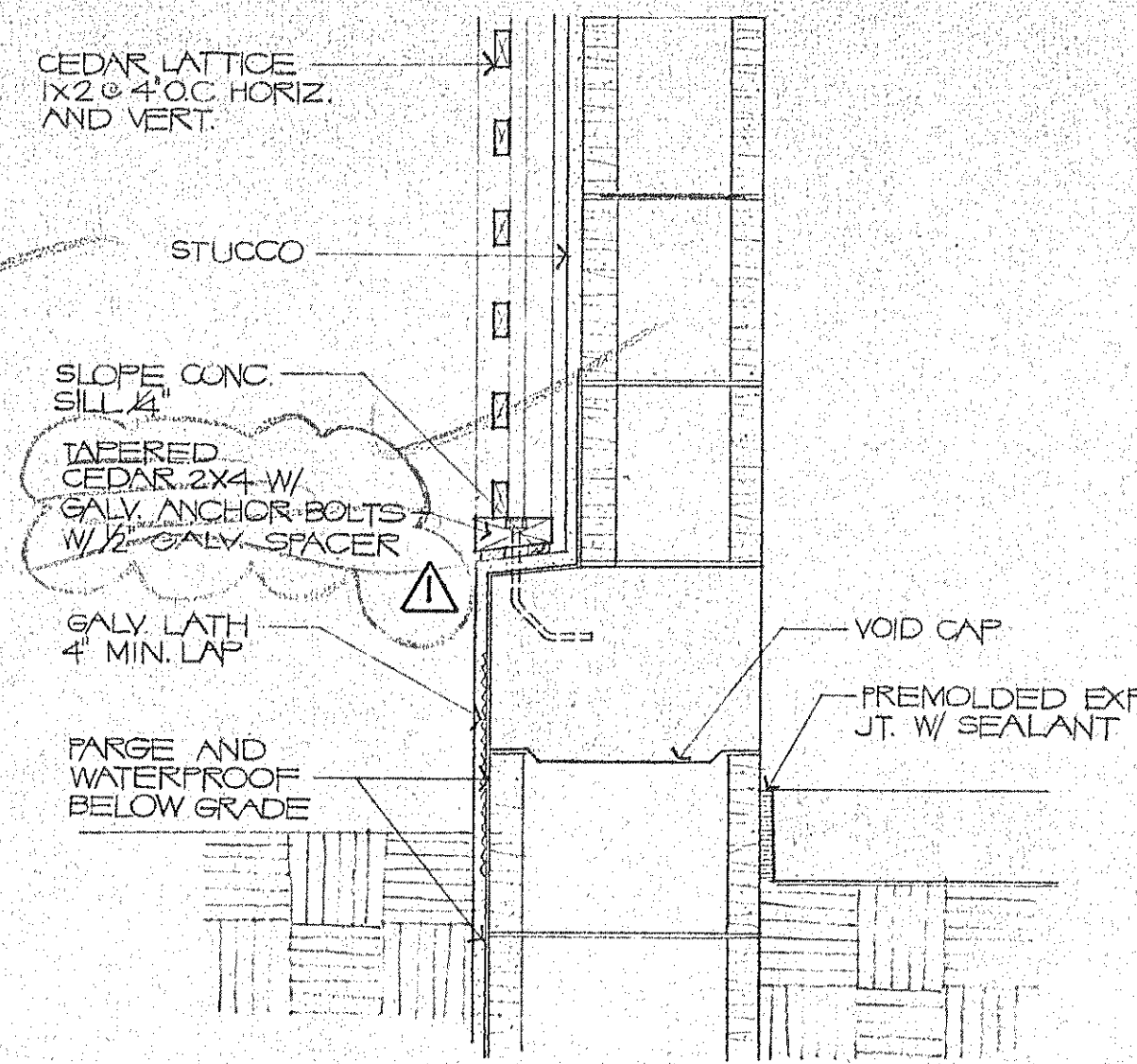


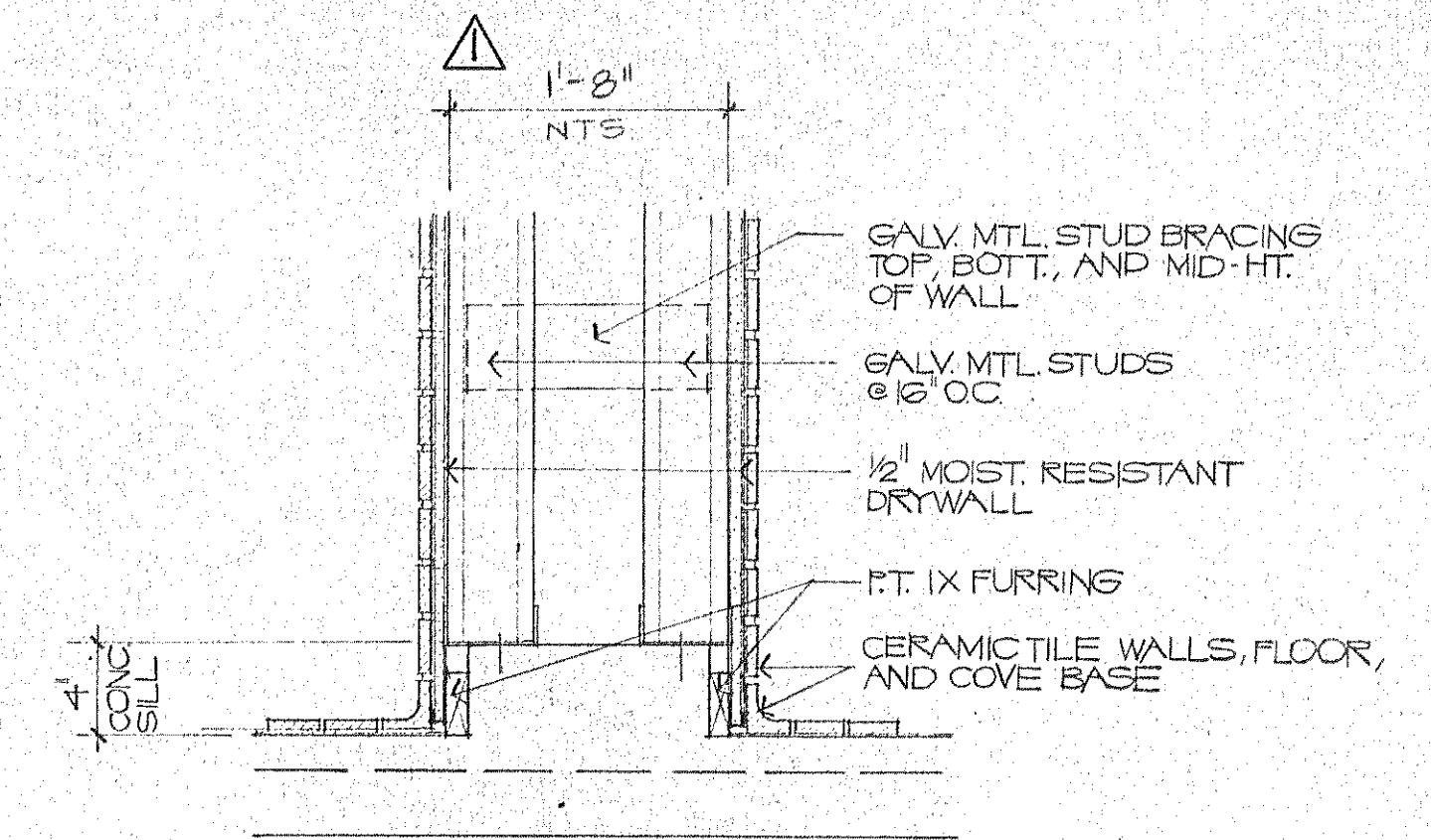
**DETAIL A**  
TYP. PARAPET  
1 1/2" = 1'-0"



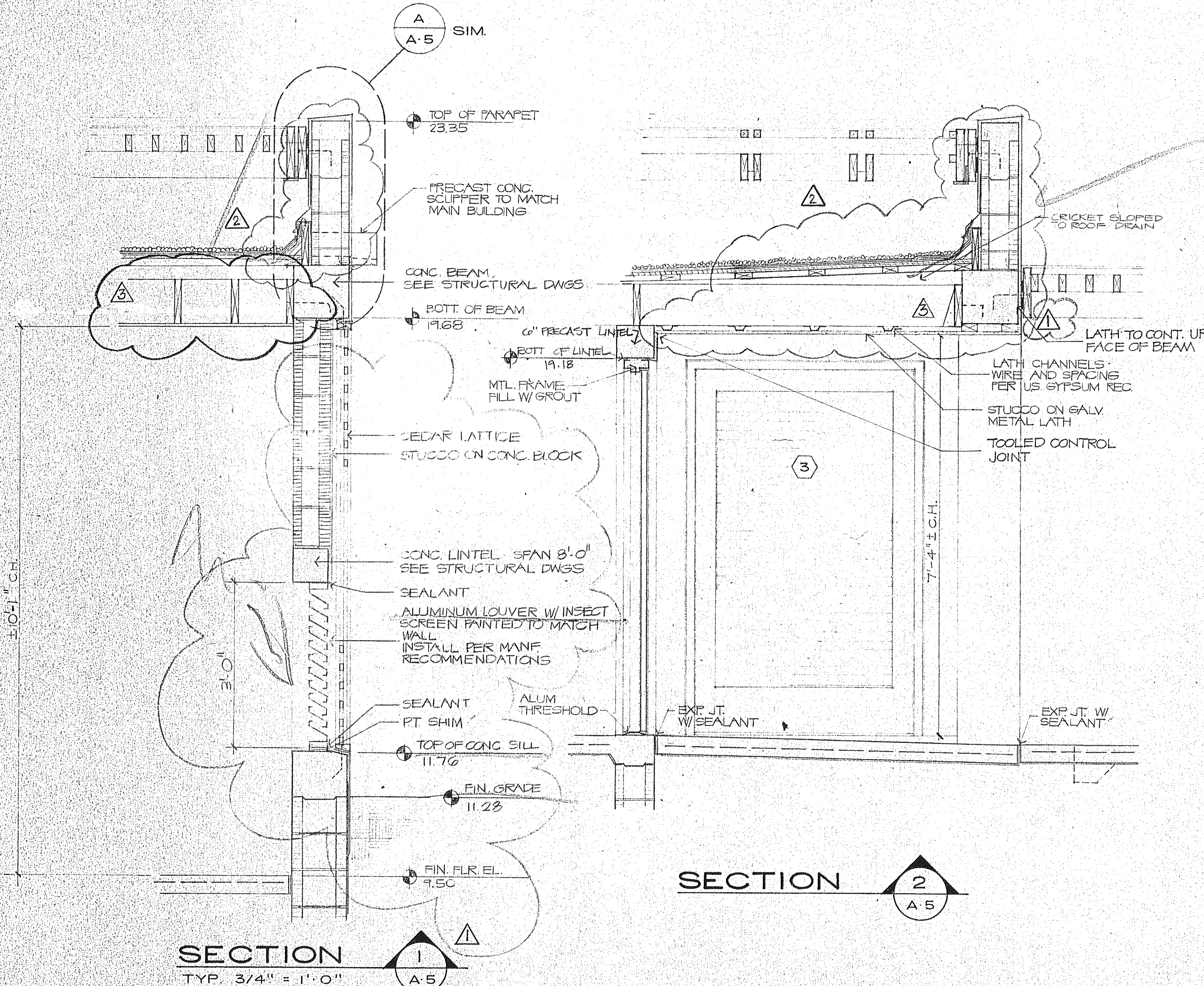
**DETAIL B**  
LATTICE HEAD  
1/2" = 1'-0"



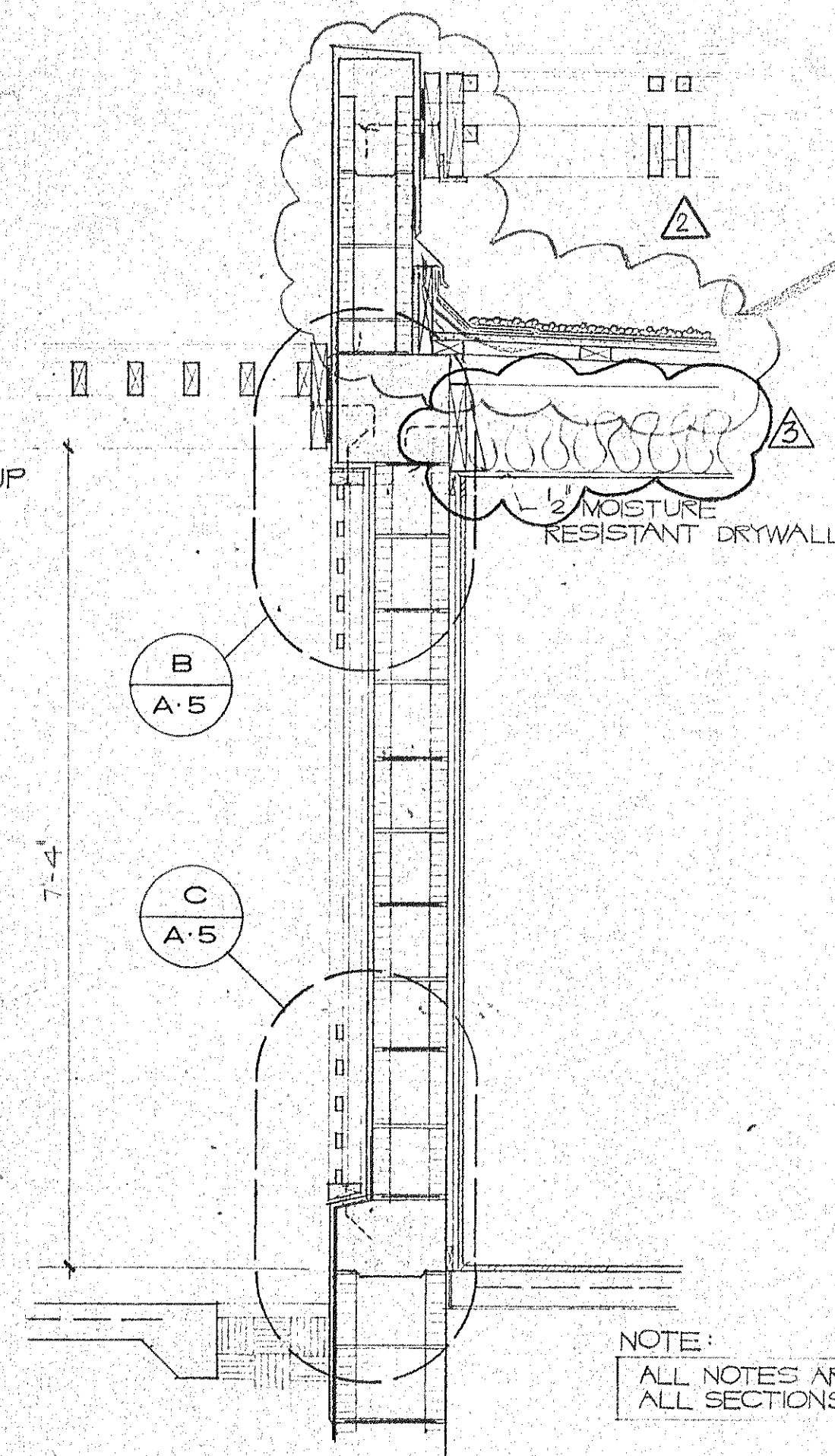
**DETAIL C**  
LATTICE SILL  
1/2" = 1'-0"



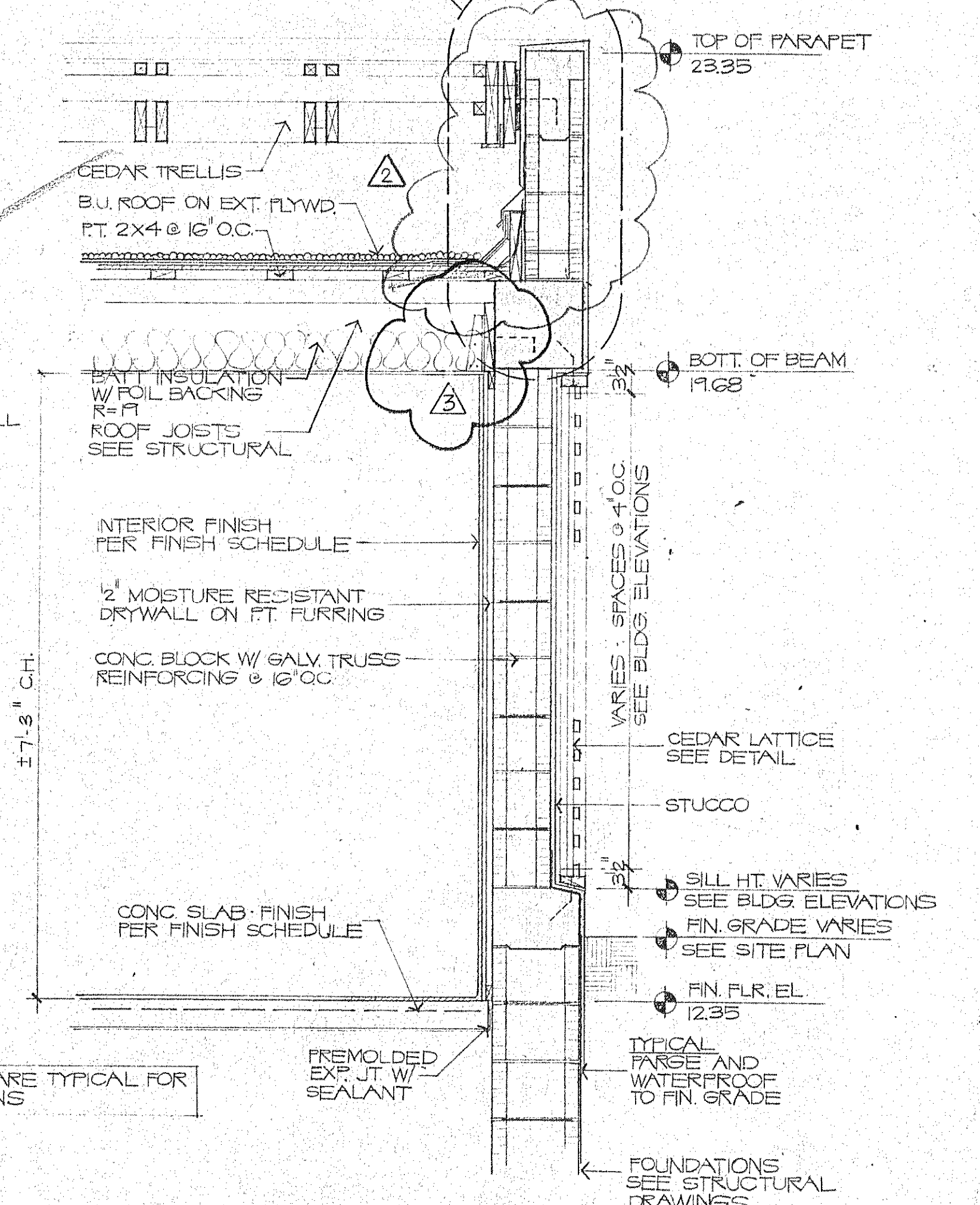
**DETAIL D**  
TOILET ROOM CHASE WALL  
1/2" = 1'-0"



**SECTION 2**  
TYP. 3/4" = 1'-0"



**SECTION 3**  
TYP. 3/4" = 1'-0"



**SECTION 4**  
TYP. 3/4" = 1'-0"

NOTE:  
ALL NOTES ARE TYPICAL FOR ALL SECTIONS

**SUNSET BEACH**  
 CONSULTING BOAT KEY  
 BENNETT & BISHOP, INC. CONSULTING ENGINEERS & SURVEYORS  
 ARVADA CORPORATION, EDWARD J. SEIBERT, AIA, ARCHITECT & PLANNER, P.A., THE SWA GROUP  
 BRABHAM, KUHNS, DEER, CONSULTING ENGINEERS, OLSEN, WHITE & ASSOCIATES, STRUCTURAL ENGINEERS  
**AUXILIARY BUILDINGS AND POOL TOILETS AND EQUIPMENT BUILDINGS**  
**WALL SECTIONS**  
 ISSUED DEC. 10, 1982  
 REVISED 4-1-83, 2-20-84, 3-12-84, 5-22-84  
 SHEET A-5  
 5 OF 6