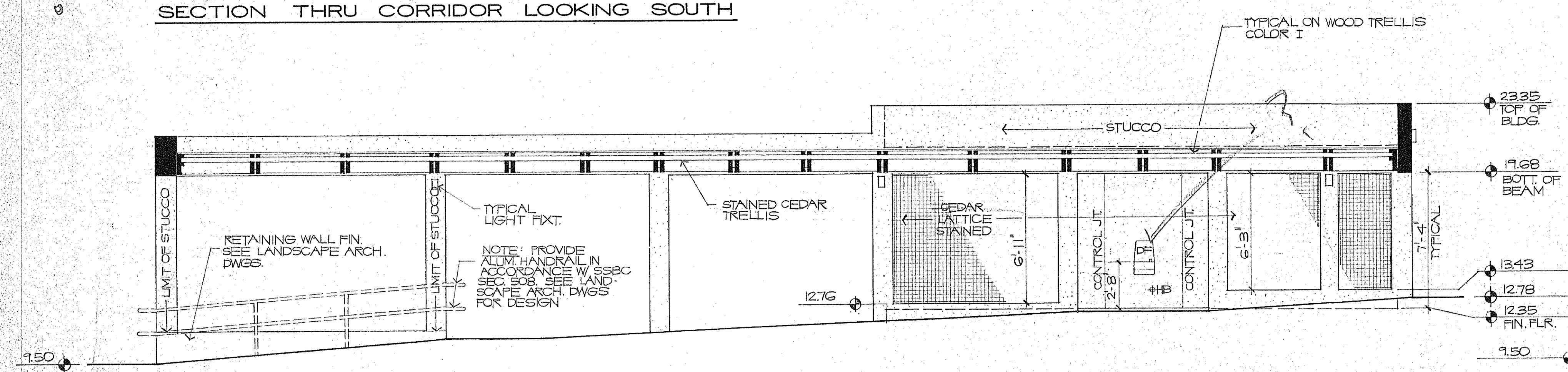
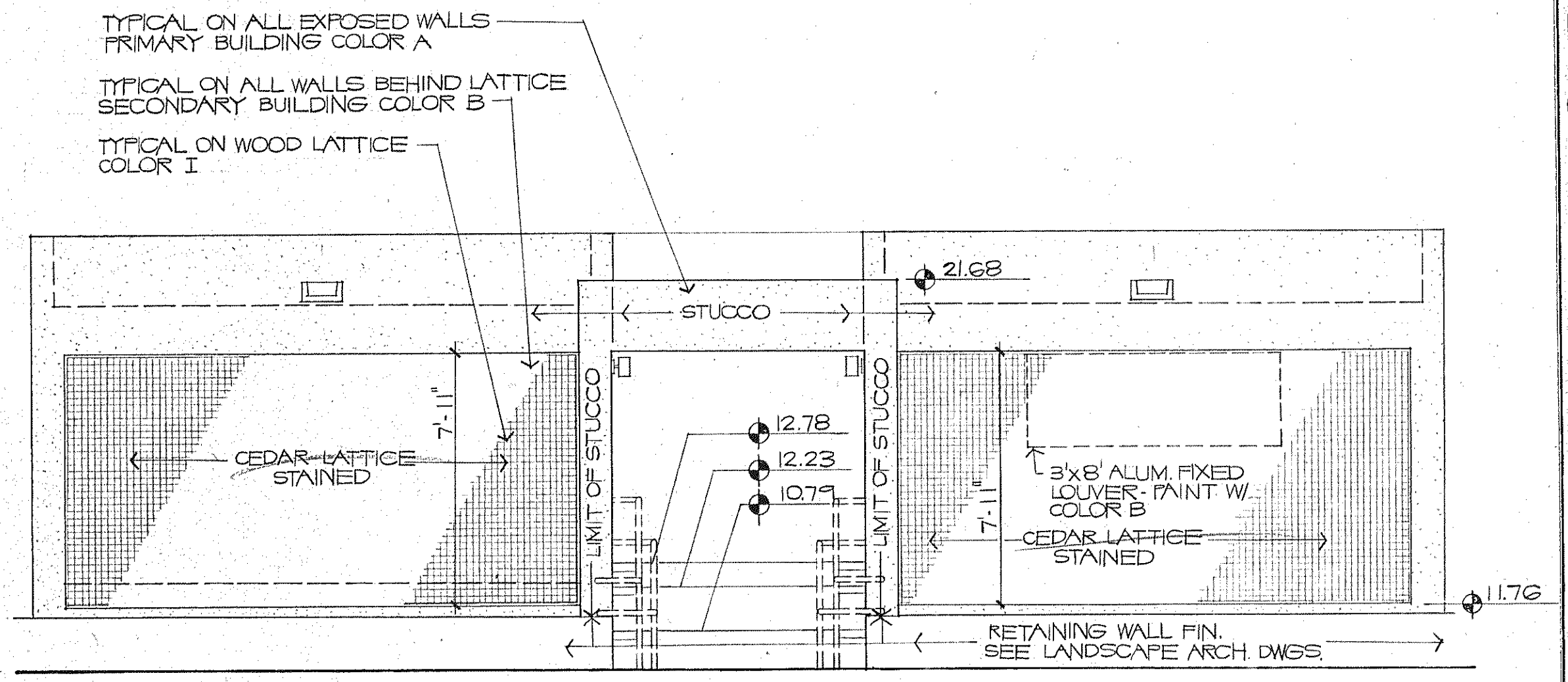


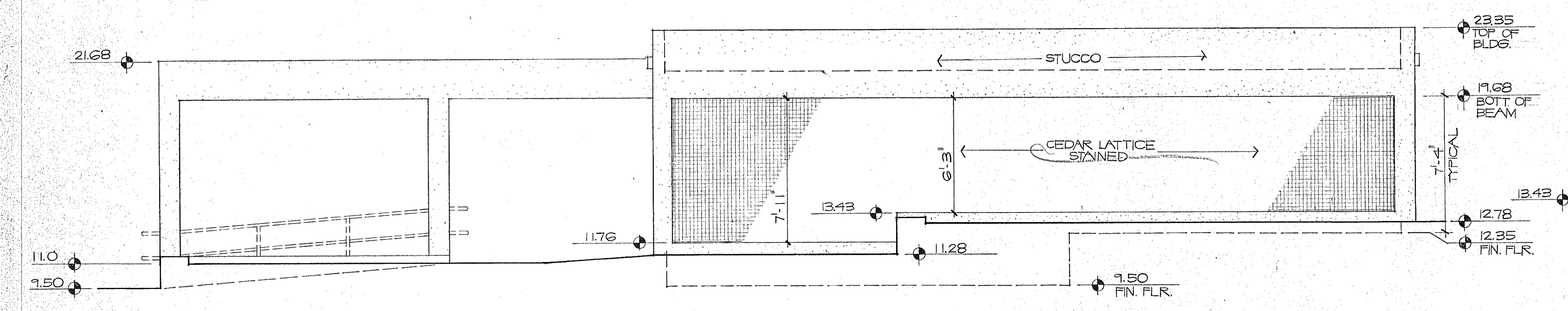
SECTION THRU CORRIDOR LOOKING SOUTH



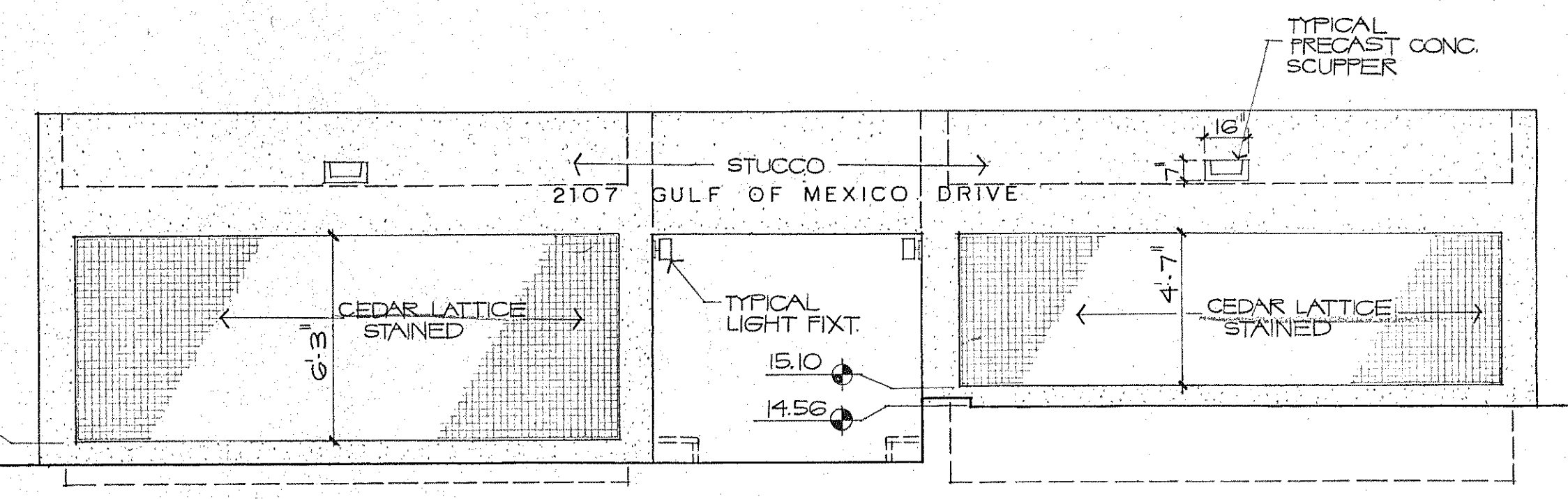
SECTION THRU CORRIDOR LOOKING NORTH



WEST ELEVATION

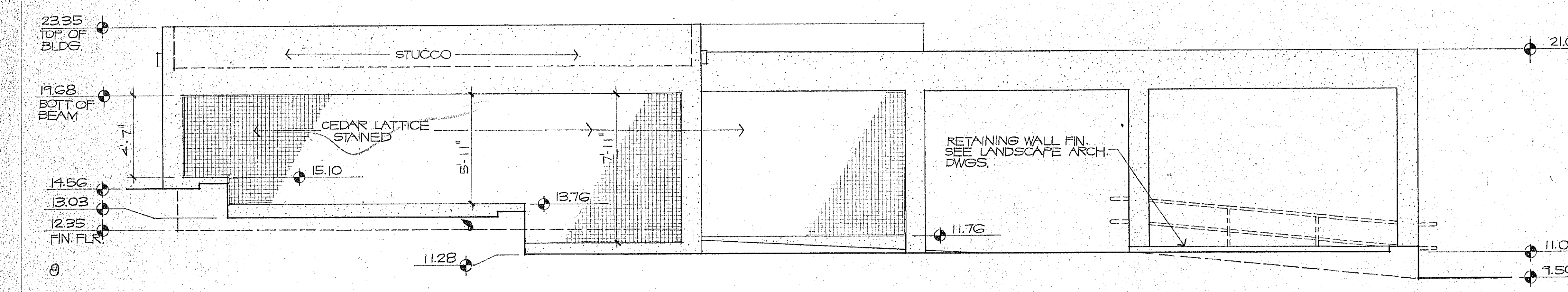


SOUTH ELEVATION

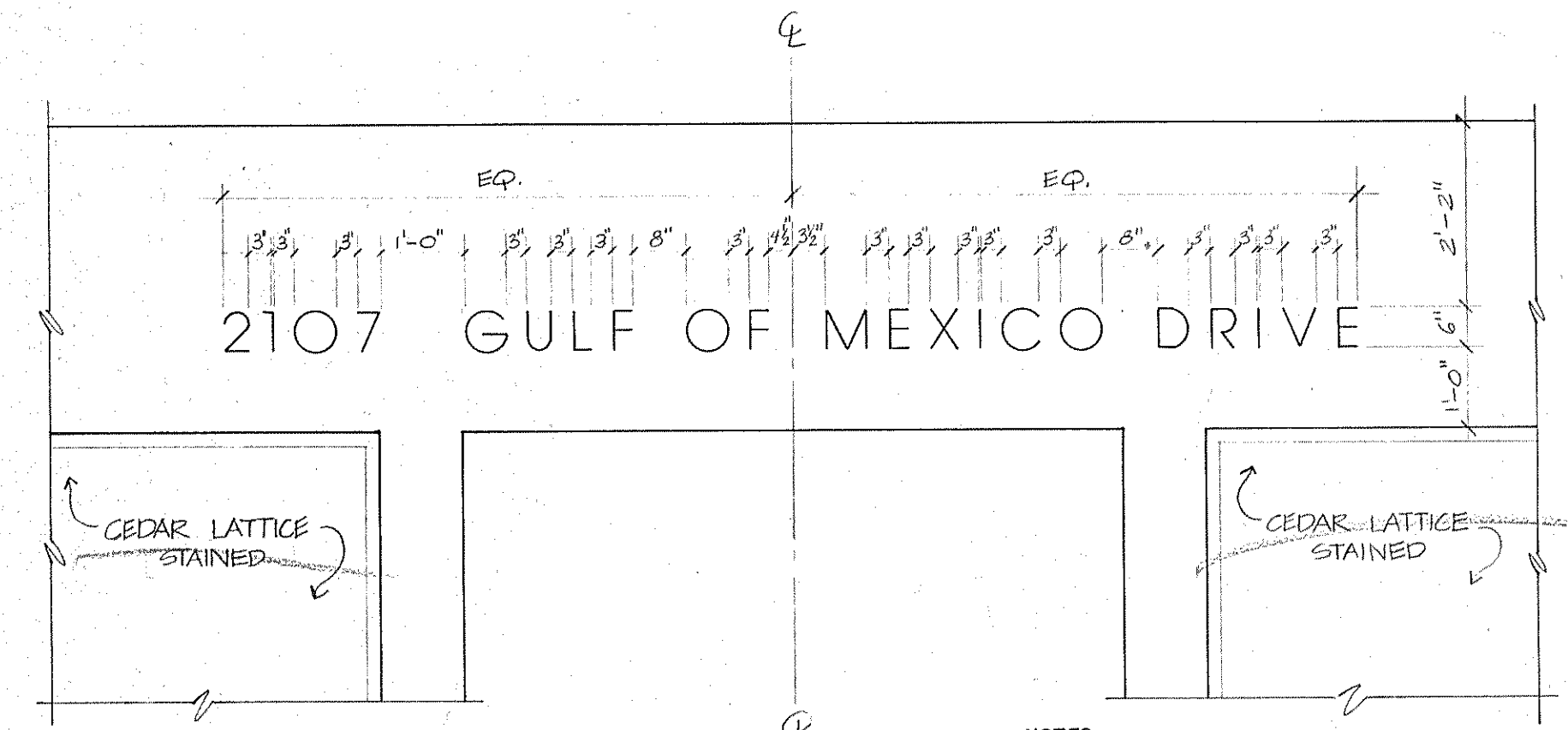


EAST ELEVATION

NOTE: REFER TO SPECIFICATIONS & DETAIL BOOK FOR GRAPHICS AND ROOM IDENTIFICATION INFORMATION.



NORTH ELEVATION



PARTIAL EAST ELEVATION 1/2" = 1'-0"
BUILDING DESIGNATION GRAPHICS

NOTES:
3-D LETTERS, 6" HIGH, AVANT GARDE X-LIGHT, MEDIUM BRONZE
CONFIRM ADDRESS WITH TOWN OF LONGBOAT KEY BUILDING DEPT.
PRIOR TO ORDERING.
CONFIRM LOCATION WITH TOWN OF LONGBOAT KEY FIRE DEPT.
PRIOR TO INSTALLATION.
NOTIFY ARCHITECT OF ANY CHANGES RESULTING FROM THESE
VERIFICATIONS.