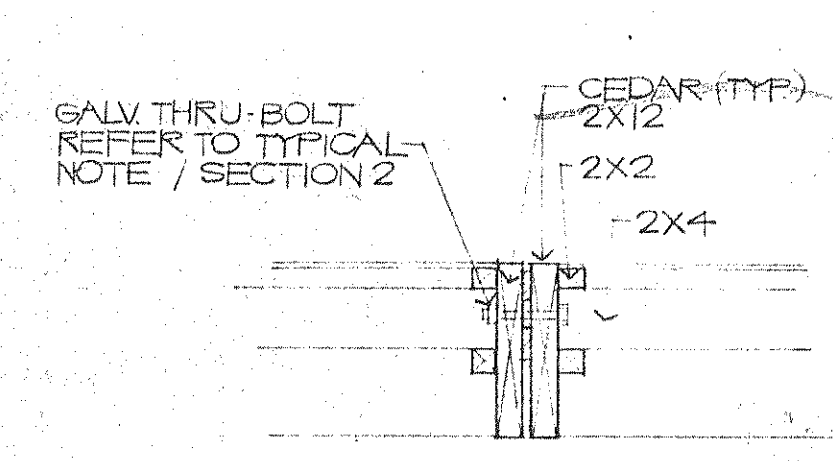


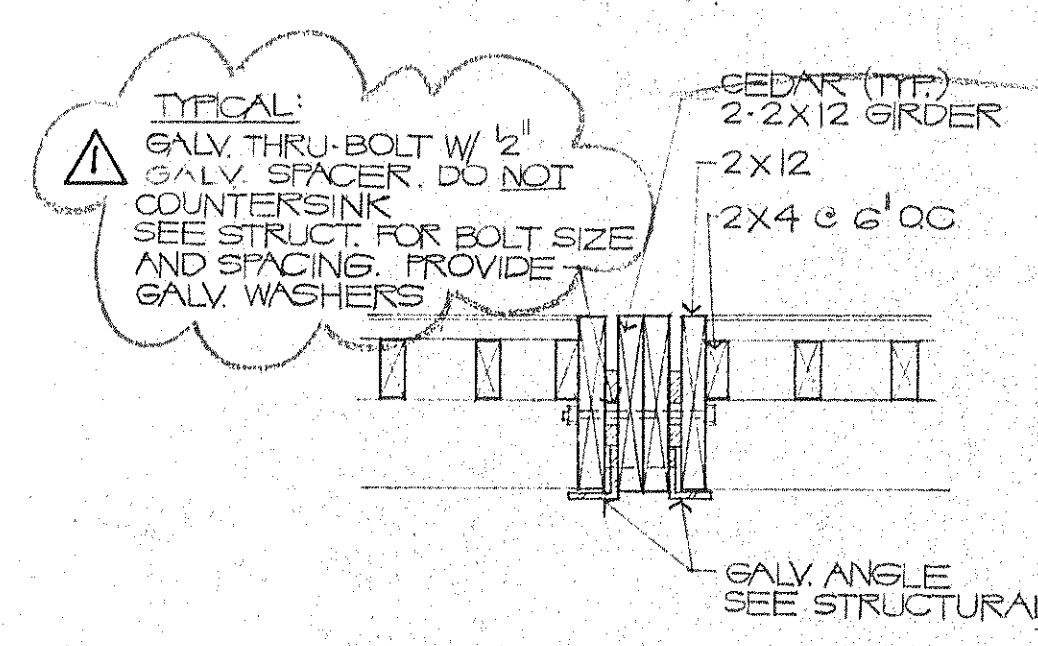
ROOF PLAN
1/4" = 1'-0"

GENERAL NOTES

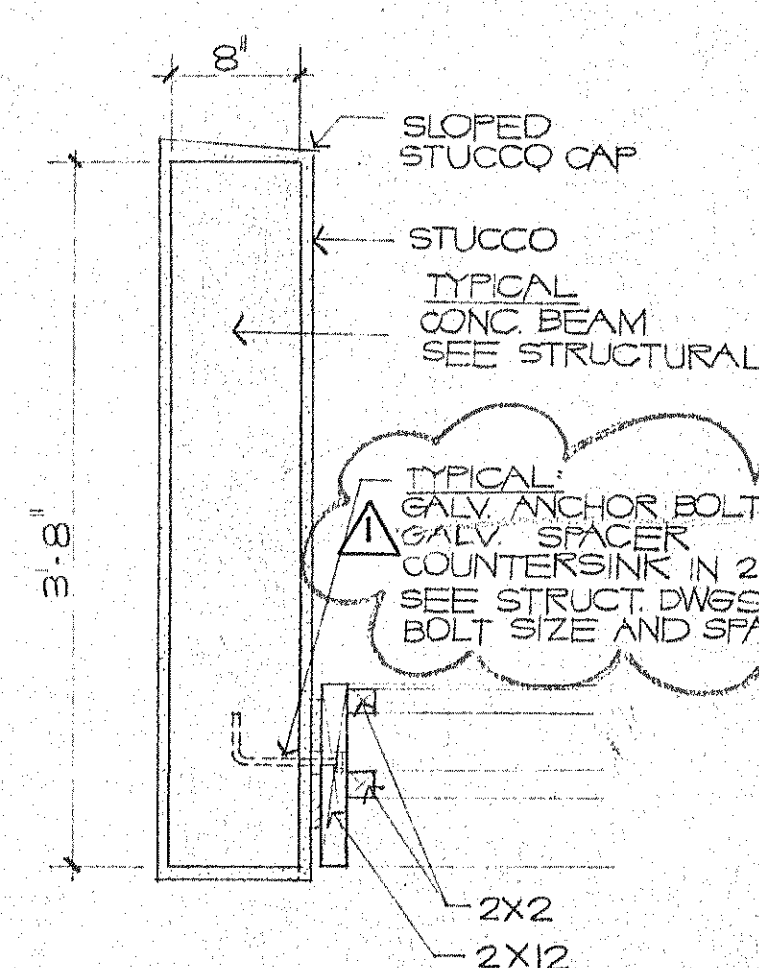
- 1. TRELLIS DETAILS SHALL MATCH TRELLIS DETAILS FOR BLDGS. 1, 2, AND 3.
- 2. ALL FLASHING SHALL BE STAINLESS STL. 304. FLASHING AT ROOF PENETRATIONS AND PARAPET SHALL COMPLY W/ SMACNA.
- 3. COORDINATE LOCATION OF ROOF DRAINS AND VENTS W/ PENETRATIONS REQUIRED FOR POOL RELATED EQUIP, VENTS, ETC.
- 4. GEN. CONTRACTOR SHALL COORDINATE ALL ROOF PENETRATIONS NOT TO INTERRUPT PRIMARY TRELLIS FRAMING MEMBERS.
- 5. PROVIDE TERNE-COATED STAINLESS ROOF VENTS AS FOLLOWS:
TOILET BLDGS: 2.0 SF TOTAL VENTED AREA
EQUIPMENT BLDGS: 2.8 SF TOTAL VENTED AREA
- 6. ALL ROOF PENETRATING ELEMENTS (I.E. VENTS, FURNACE FLUES, ETC.) TO BE PAINTED.
- 7. REFER TO MECH., PLUMB, AND ELEC. DWGS. FOR VENTILATION AND FURNACE INFORMATION.



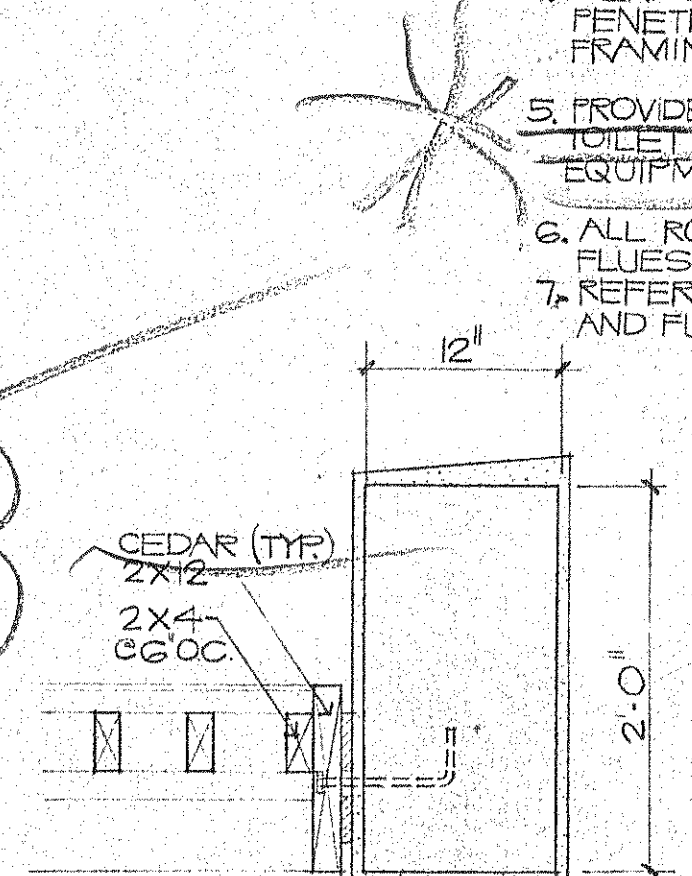
SECTION 1
TYP. 1" = 1'-0"
A-3



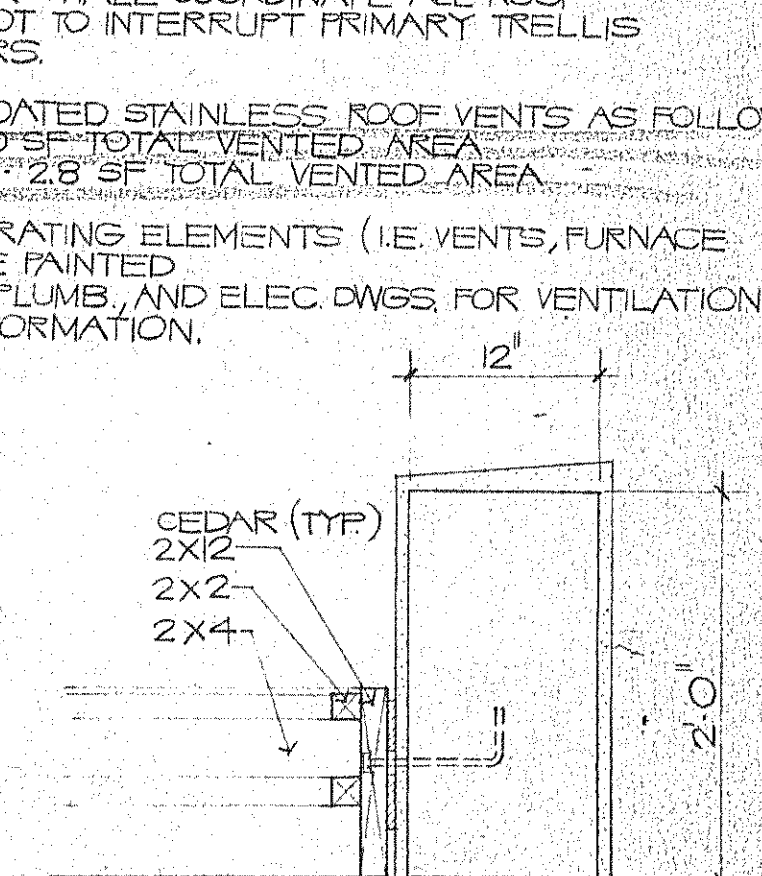
SECTION 2
TYP. 1" = 1'-0"
A-3



SECTION 3
TYP. 1" = 1'-0"
A-3



SECTION 4
TYP. 1" = 1'-0"
A-3



SECTION 5
TYP. 1" = 1'-0"
A-3

NOTE: REFER TO STRUCTURAL DWGS. FOR CONNECTION SPECS & DETAILS.