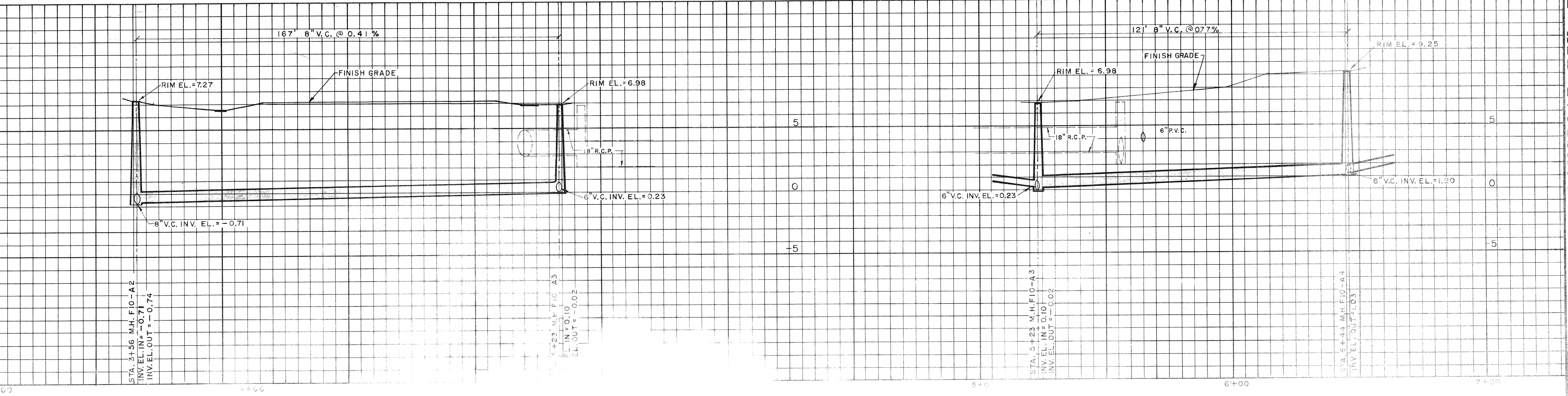
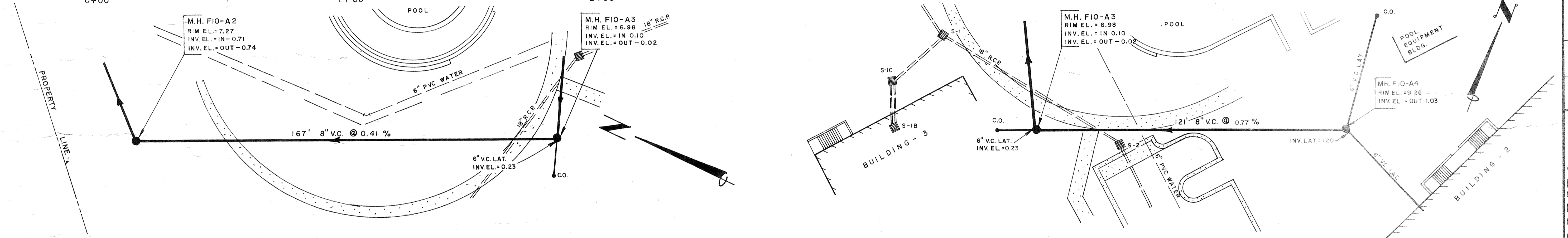
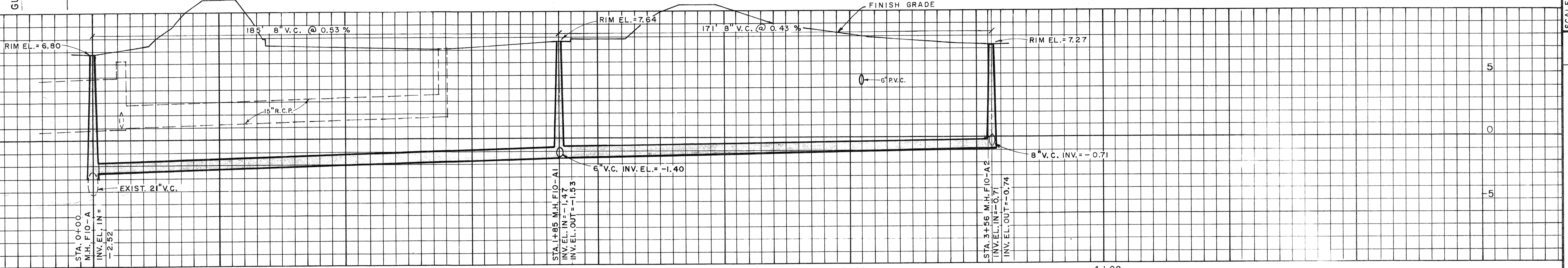
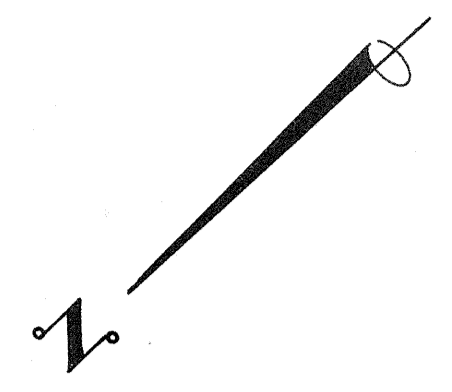
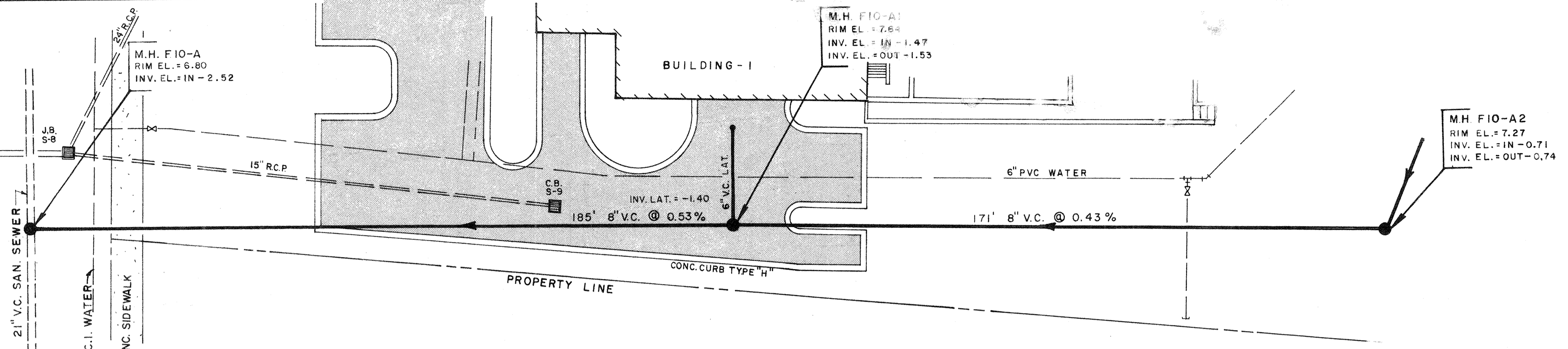


GULF OF MEXICO DRIVE S.R. 789



DESIGNED BY	PROJECT ENGINEER
DATE:	CHECKED BY PROJECT NO
SCALE:	HORIZ. 1" = 20'
	VERT. 1" = 4'
DRAWN BY	N.A.L.
REVISION	
L.T.R.	DATE
TOWN OF LONGBOAT KEY, FLORIDA	
ARVIDA CORPORATION	SUNSET BEACH
AS-BUILT	BENNETT & BISHOP INC. ENGINEERS & SURVEYORS
4509 BEE RIDGE ROAD SARASOTA, FLORIDA	
SHEET NUMBER	191-539
REVISION	