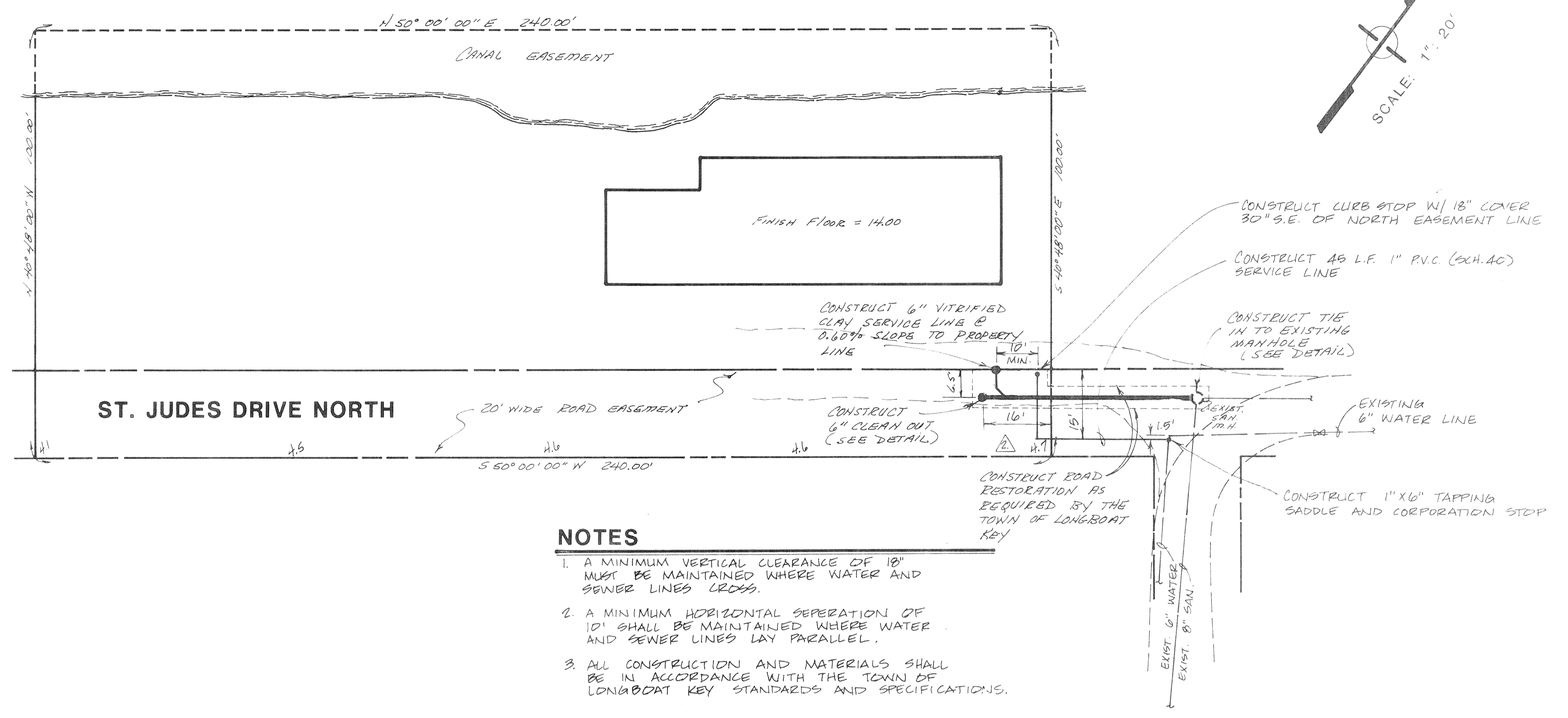


TRENCH BEDDING & BACKFILL DETAIL
N.T.S.

NOTES:

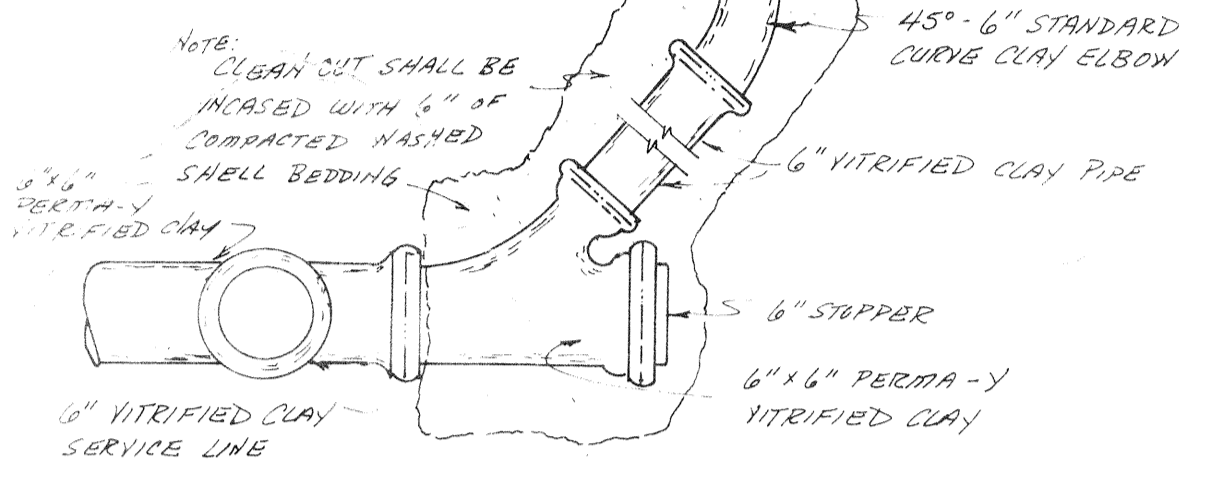
1. ALL PIPE TRENCH BEDDING AND BACKFILL REQUIREMENTS SHALL COMPLY WITH ASTM DESIGNATION C12-82, EXCEPT AS STIPULATED ON THE TRENCH BEDDING AND BACKFILL DETAILS ON THIS SHEET
2. VITRIFIED CLAY PIPE SHALL MEET THE REQUIREMENTS OF ASTM DESIGNATION C425-77 AND ASTM DESIGNATION C700-78A. (PERMA-LINE EXTRA STRENGTH, MANUFACTURED BY DICKEY PIPE, OR AN APPROVED EQUAL)
3. THE CONTRACTOR SHALL RESTORE ALL PAVEMENT AND LANDSCAPING, WITHIN THE RIGHT OF WAY, WHICH IS DISTURBED BY CONSTRUCTION
4. ALL GRASS AREA DISTURBED WITHIN THE RIGHT OF WAY SHALL BE REPLACED WITH SOD.



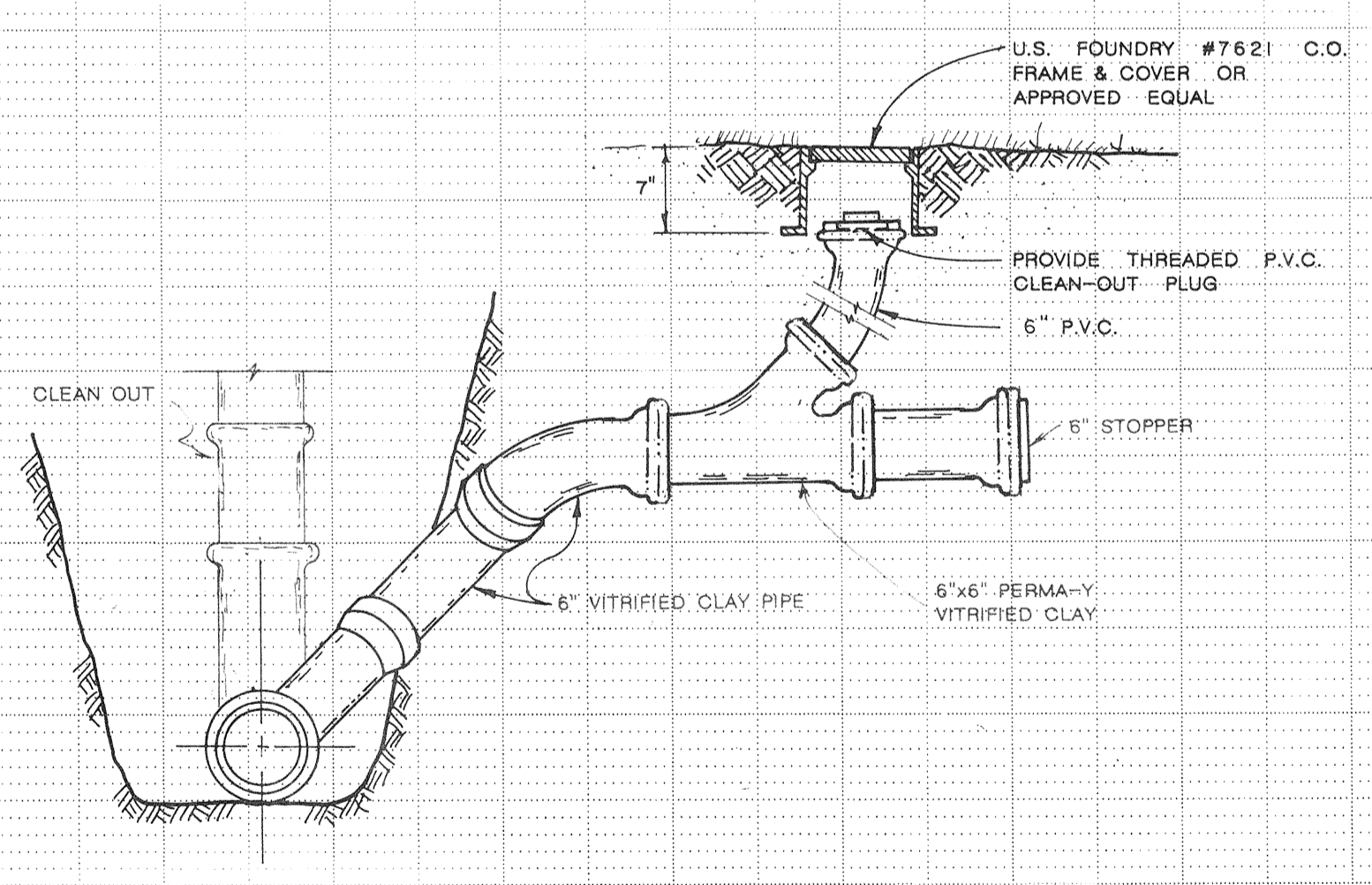
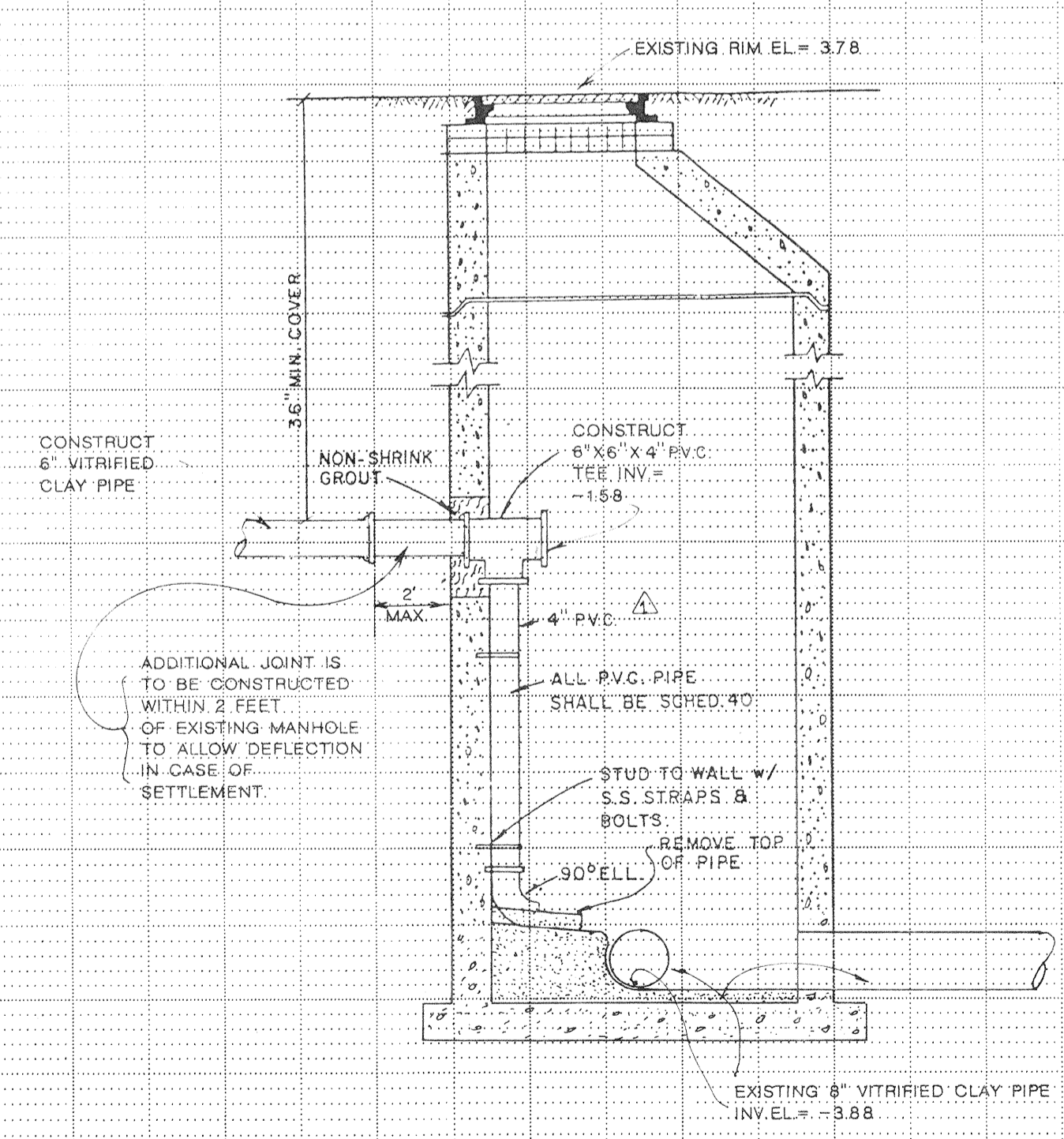
NOTES

1. A MINIMUM VERTICAL CLEARANCE OF 18" MUST BE MAINTAINED WHERE WATER AND SEWER LINES CROSS.
2. A MINIMUM HORIZONTAL SEPARATION OF 10" SHALL BE MAINTAINED WHERE WATER AND SEWER LINES LAY PARALLEL.
3. ALL CONSTRUCTION AND MATERIALS SHALL BE IN ACCORDANCE WITH THE TOWN OF LONGBOAT KEY STANDARDS AND SPECIFICATIONS.

CLEAN OUT DETAIL
N.T.S.

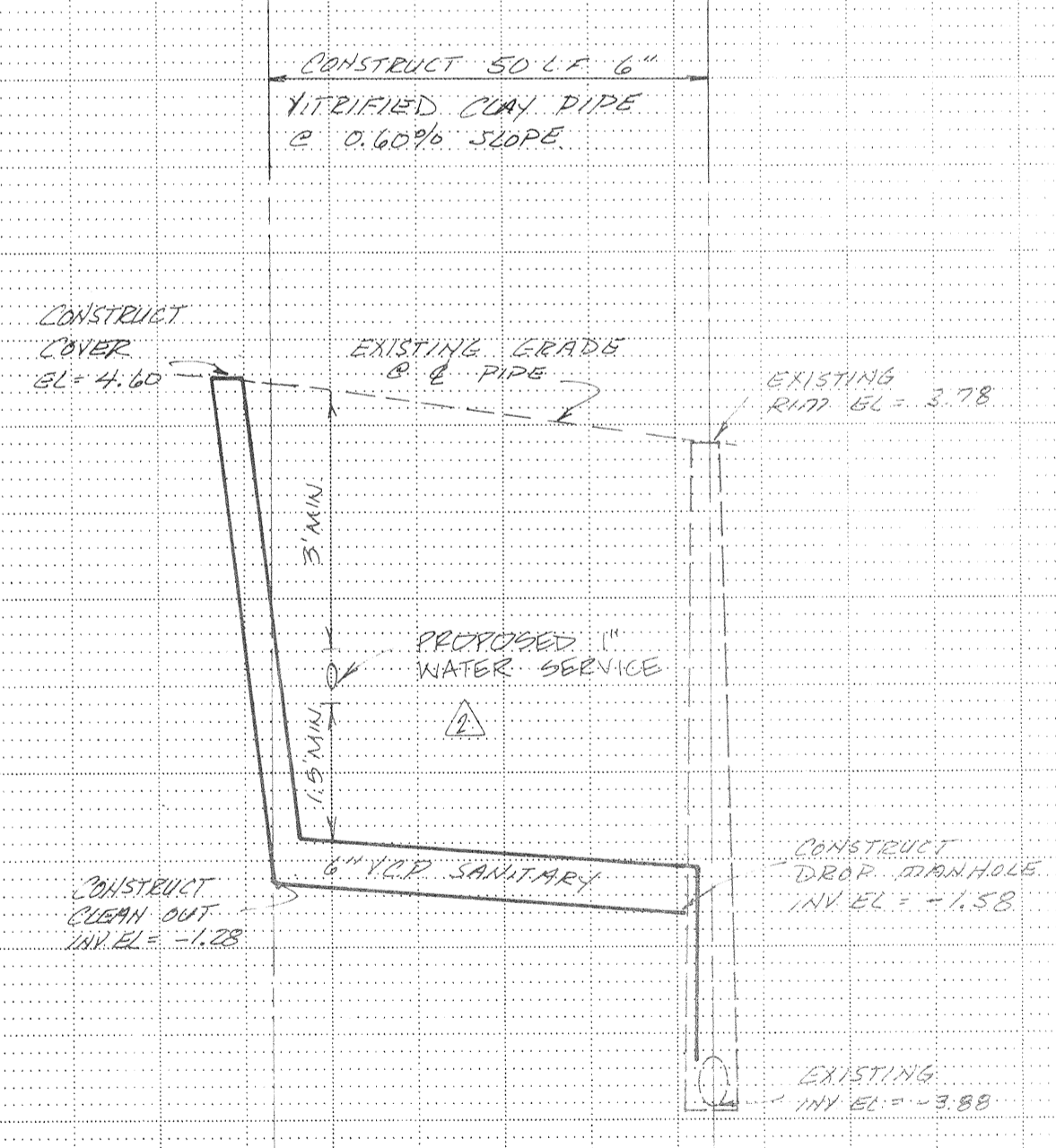


EXISTING MANHOLE
N.T.S.



SERVICE DETAIL
N.T.S.

CONSTRUCT CLEAN OUT **EXIST. M.H.**



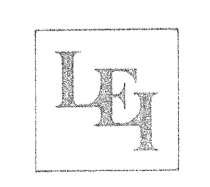
SCALE
1" = 20' HORIZ.
1" = 2' VERT.

**WATER AND SEWER
PLAN & PROFILE**

**MONIZ UTILITIES EXTENSION
ST. JUDES NORTH, LONGBOAT KEY**

IN
SEC. 24, TWP. 35 S., RGE 16 E
MANATEE COUNTY FLORIDA

REVISIONS	
1	10-21-86 KAT
2	10-28-86 M.W.M.
3	
4	
5	



Larson Engineering, Inc. OCT 28 1986
ENGINEERS - PLANNERS 5604 Manatee Blvd.
Bradenton, Florida
813-764-4444

DESIGNED BY: [Signature] CHECKED BY: [Signature] DATE: [Signature]
DRAWN BY: [Signature] FILE NO: [Signature]