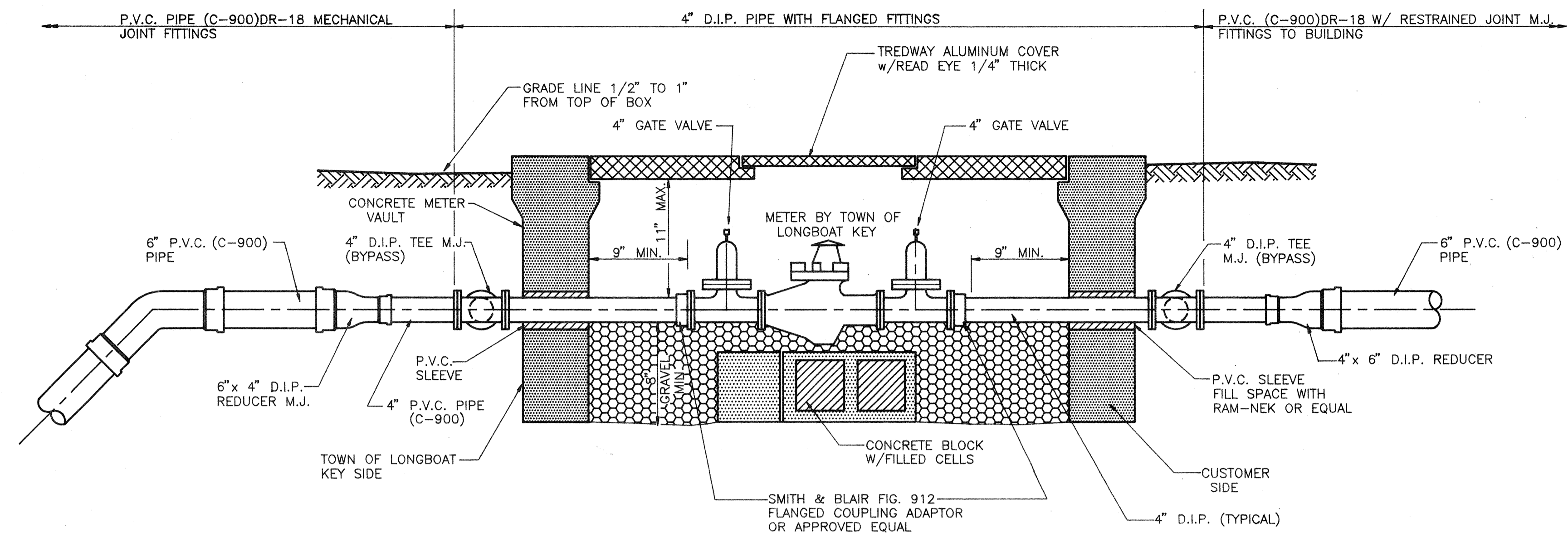
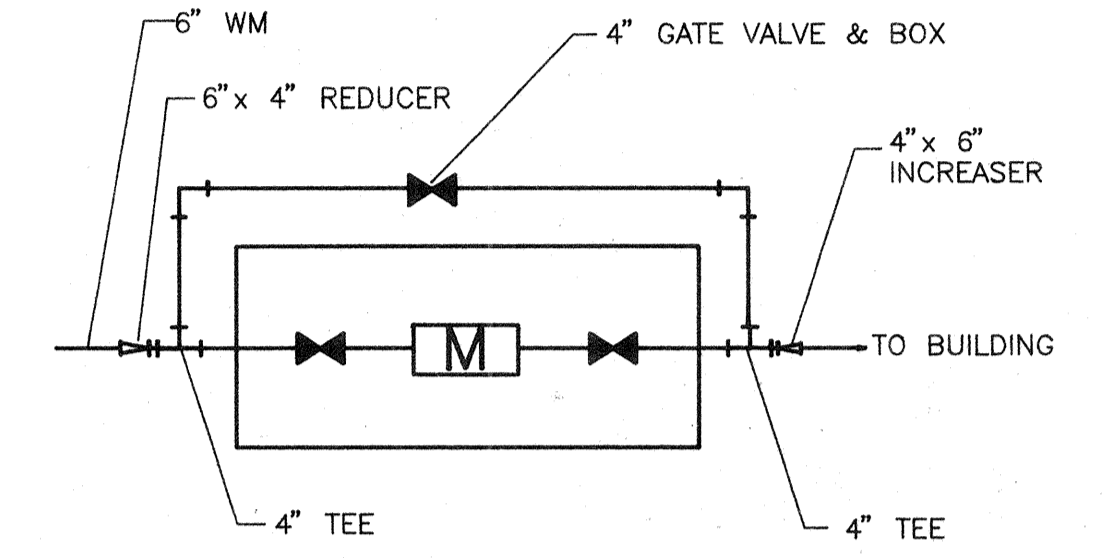


**NOTES:**

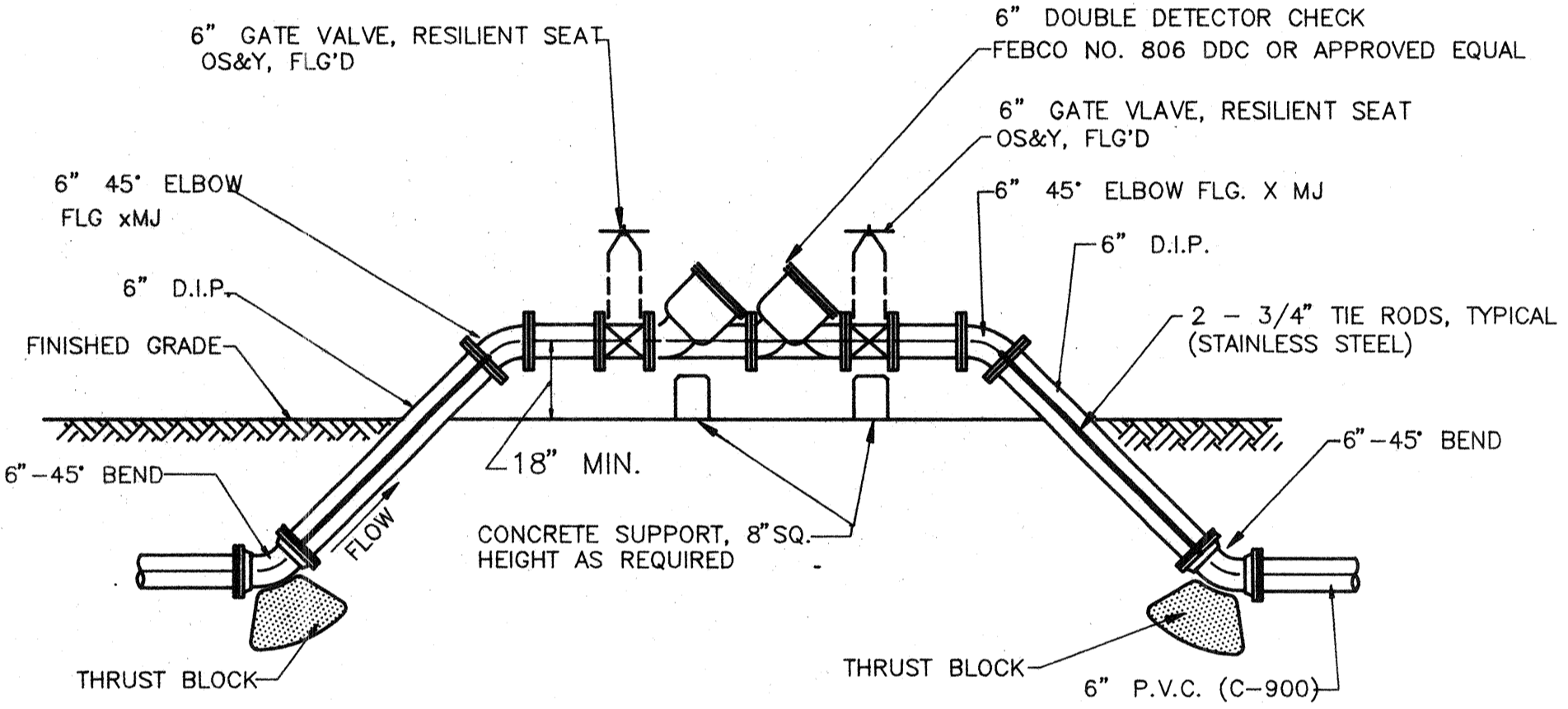
1. ALL P.V.C. WATERMAIN SHALL BE COLOR CODED BLUE W/CLASS DR-18,(AWWA C-900), W/36" COVER AND DETECTABLE TAPE.
2. ALL P.V.C. FIRE MAIN SHALL BE COLOR CODED BLUE W/CLASS DR-14 (AWWA C-900), W/36" COVER AND DETECTABLE TAPE.
3. CONTRACTOR TO CONTACT TOWN OF LONGBOAT KEY UTILITIES DIRECTOR FOR CHANGE OF MATERIALS.
4. CONTRACTOR SHALL USE 2" PVC SCH-40 FOR WATER SERVICE METER, AND RESPECTIVE FITTINGS TO CLUBHOUSE IN ACCORDANCE W/ CONTRACT DOCUMENTS AND TOWN OF LONGBOAT KEY REGULATIONS



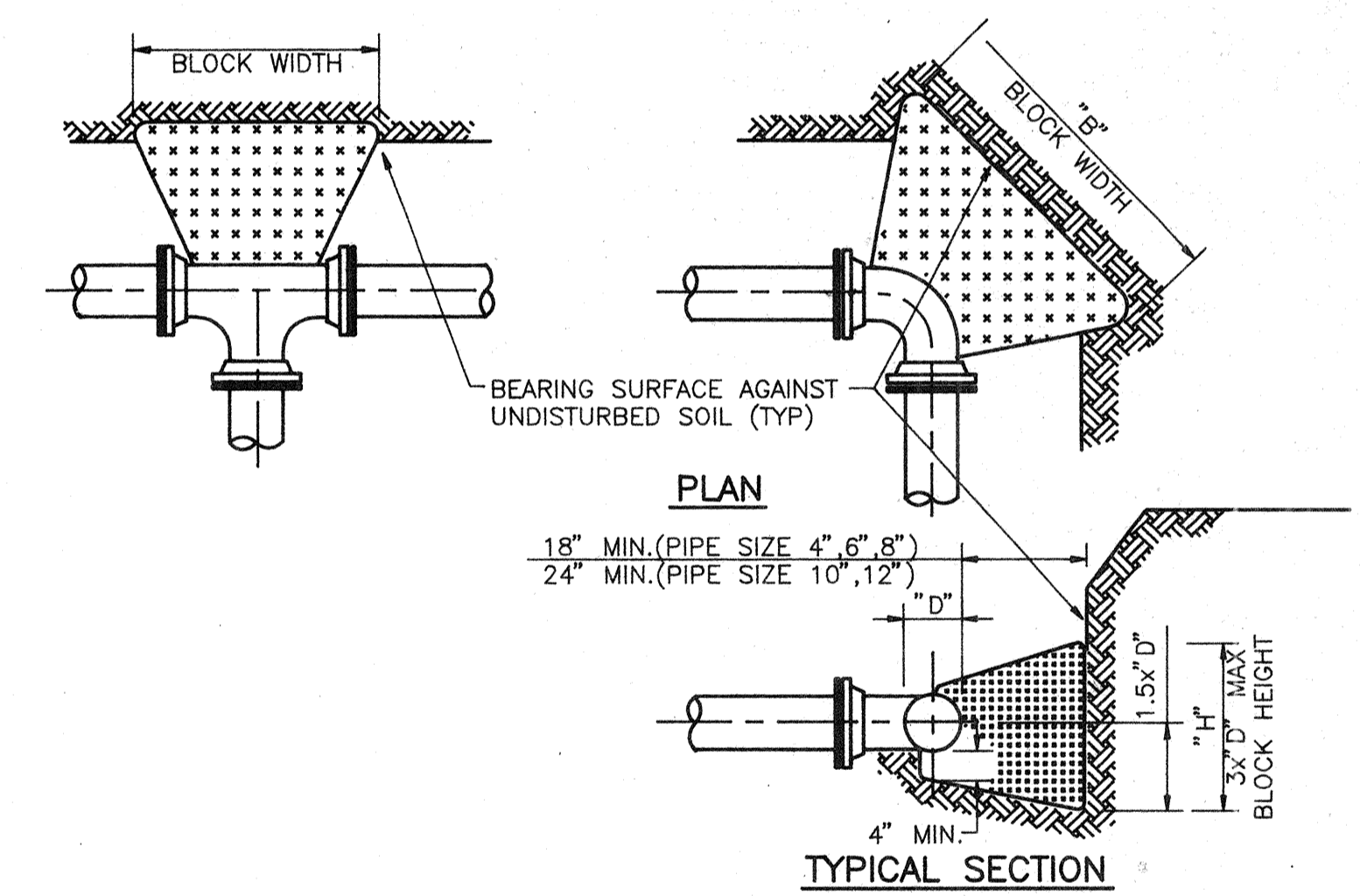
**WATER METER INSTALLATION**  
N.T.S.



**METER BOX SCHEMATIC**  
N.T.S.



**BACKFLOW PREVENTER DETAIL**  
N.T.S.



BEARING SURFACE AREA ( SQ. FT. )

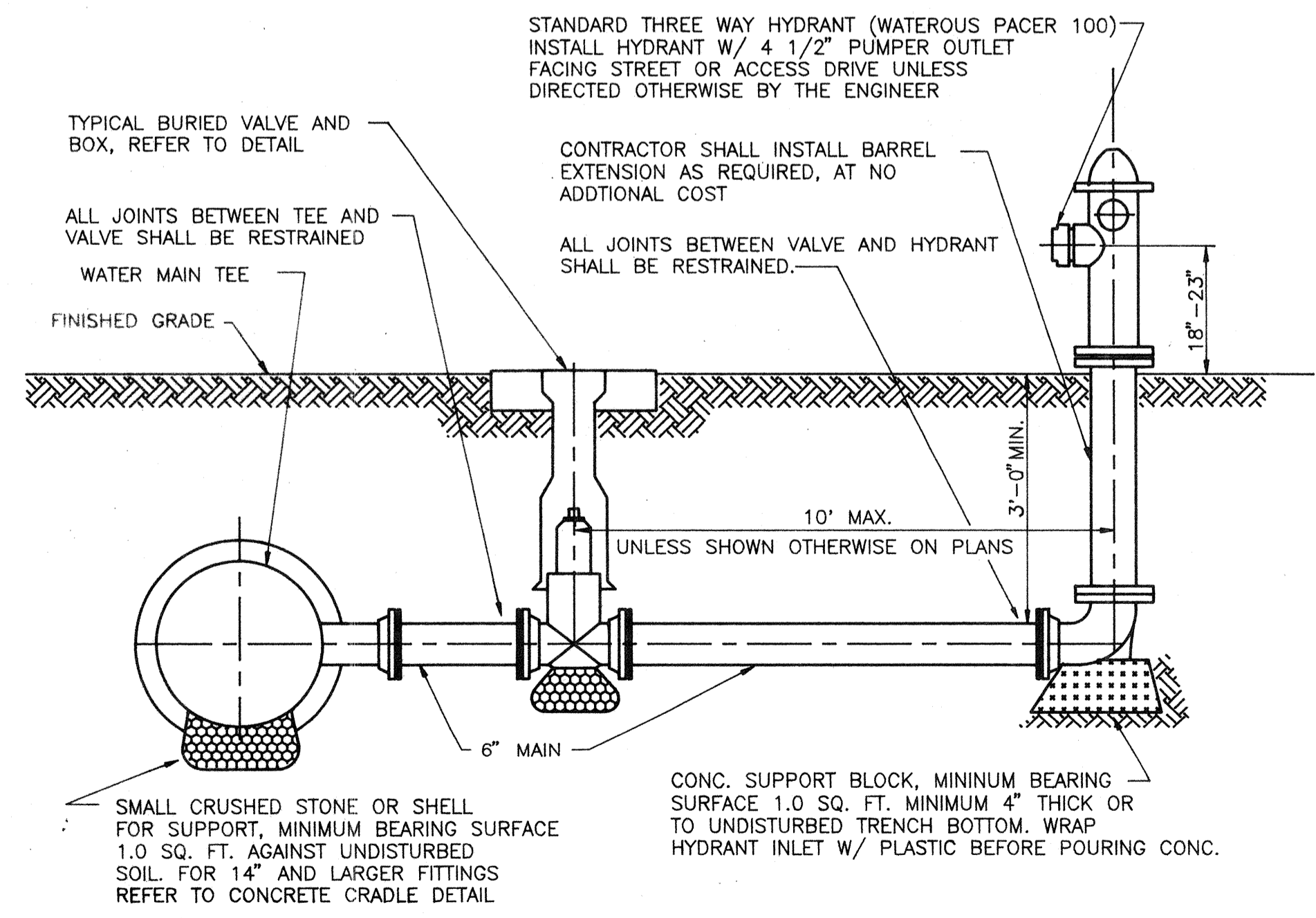
PIPE SIZE	90° ELB	45° ELB	22 1/2° ELB, 11 1/4° ELB.	TEE OR PLUG
4"	2.0	1.1	1.0	1.4
6"	4.5	2.4	1.2	3.2
8"	8.0	4.3	2.2	5.7
10"	12.5	6.8	3.5	8.8
12"	18.0	9.7	5.0	12.7

DESIGN PRESSURE = 150 PSI

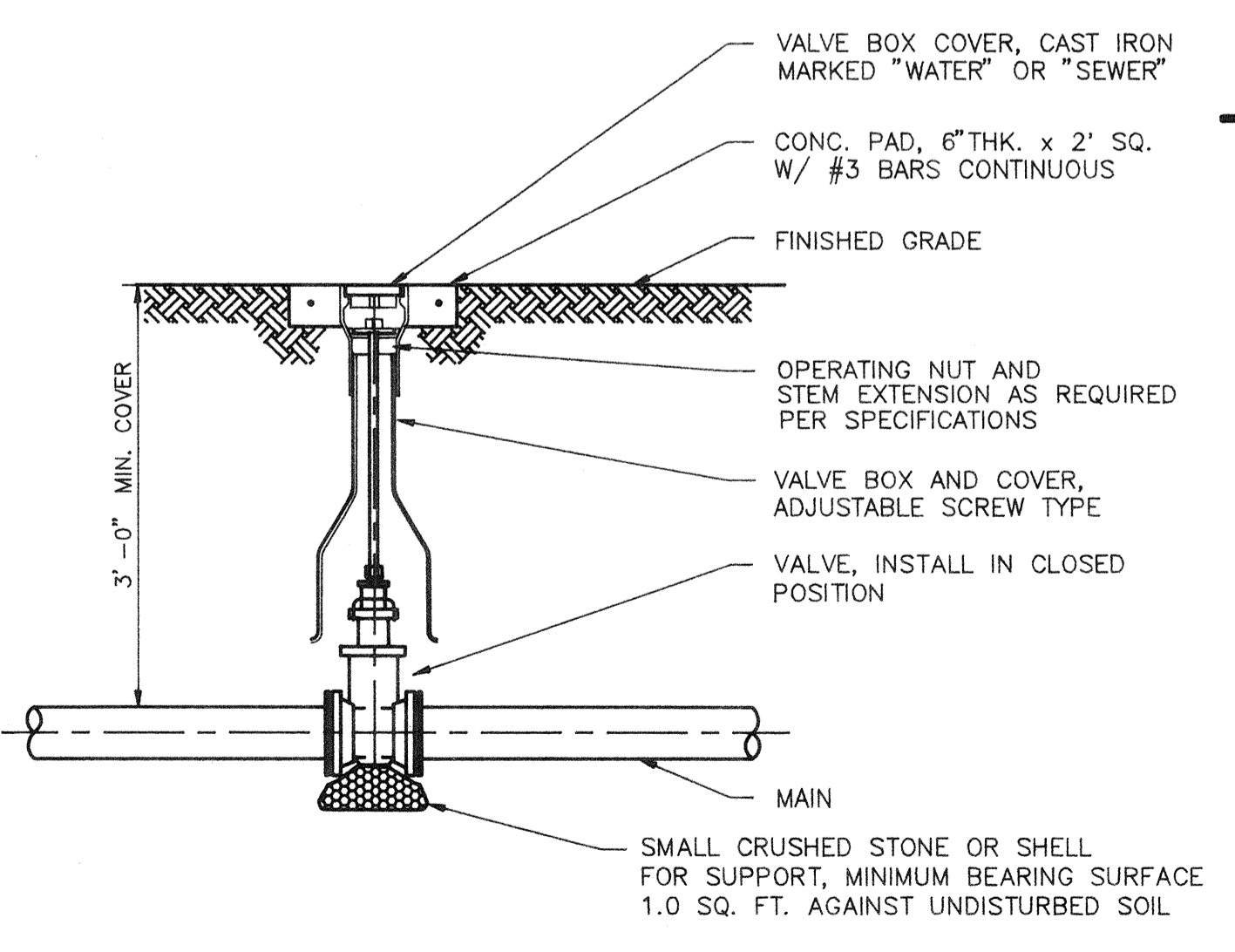
**NOTES**

1. THRUST BLOCK BEARING AREA BASED ON 2000 PSF SAFE SOIL BEARING. IF ACTUAL SOIL BEARING IS LESS THAN 2000 PSF, CONTRACTOR SHALL BE REQUIRED TO PLACE ADDITIONAL THRUST BEARING AS DETERMINED BY THE ENGINEER, AT NO ADDITIONAL COST.
2. THRUST BLOCKS SHALL BE POURED AGAINST UNDISTURBED SOIL.
3. CONCRETE SHALL BE KEPT CLEAR OF "T" BOLT AND PLACED BENEATH FITTINGS AS SHOWN OR SUPPORT. WRAP ALL FITTINGS WITH PLASTIC BEFORE POURING THRUST BLOCK CONCRETE.
4. BEFORE POURING CONCRETE, PLUGS SHALL BE WRAP WITH PLASTIC AND A PRESSURE TREATED BOARD PLACED BETWEEN IT AND THE CONCRETE.
5. "B" SHALL NOT EXCEED 2 x "H".

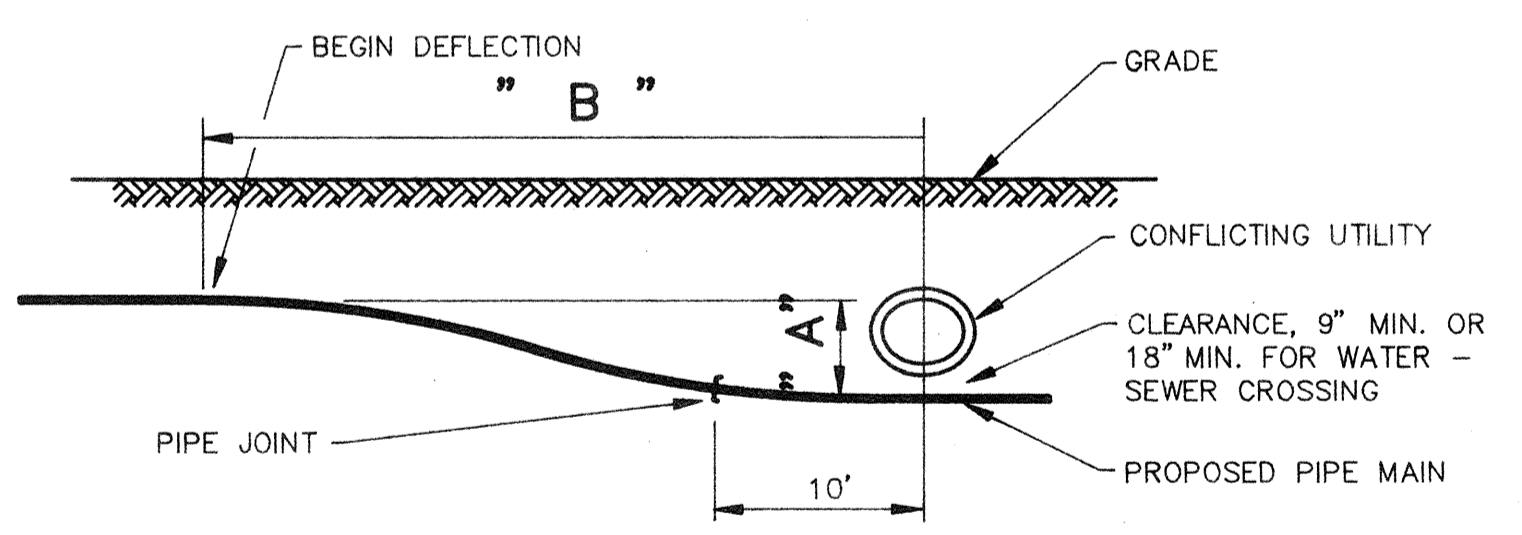
**WATER MAIN THRUST BLOCK DETAIL**  
N.T.S.



**TYPICAL FIRE HYDRANT ASSEMBLY DETAIL**  
N.T.S.



**BURIED VALVE DETAIL**  
N.T.S.



MINIMUM DISTANCE TO START DEFLECTION "B"

BENDING RADIUS OF PIPE (FT.)	70	80	100	120	150	200	250	300	350	400	500	550
0.5	20	20	20	20	20	20	22	25	26	28	32	34
1.0	20	20	22	22	28	32	35	37	40	46	49	49
1.5	20	22	24	27	30	35	39	42	46	49	56	60
2.0	24	25	28	31	35	40	45	49	53	57	65	70
3.0	30	31	35	38	42	49	55	60	65	69	80	85

ALLOWABLE BENDING RADIUS DETERMINED FOR ASTM D2241, SDR 18 AND C-900

PIPE DIAMETER	1 1/2"	2"	2 1/2"	3"	4"	6"	8"	10"	
ALLOWABLE BENDING RADIUS (FT.)	SDR 21	70	80	100	120	150	220	290	360
C-900	—	—	—	—	—	200	300	400	475

**UTILITY CROSSING DETAIL**  
N.T.S.

FIELD BOOK NO. \_\_\_\_\_  
PAGE \_\_\_\_\_  
Sec. - Top - Ring \_\_\_\_\_  
  
PLOT DATE: \_\_\_\_\_  
CAD FILE: \_\_\_\_\_  
P. Or. #: \_\_\_\_\_

BY	DATE	Q.C.	DATE	DESCRIPTION

TASK	INITIALS	DATE
DESIGN	P.C.P.	4-19-93
DRAWN	P.S.N.	4-28-93
CHECKED	W.F.B.	
QUALITY CHK		
DATE		
VERT. SCALE		

