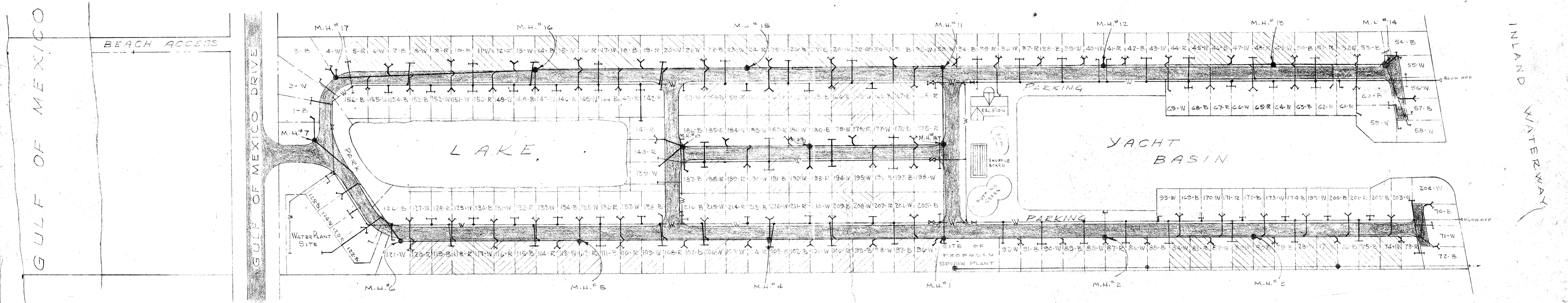


SPANISH MAIN YACHT CLUB A CONDOMINIUM

IN
MANATEE COUNTY, FLORIDA

LAND DEVELOPMENT PLANS

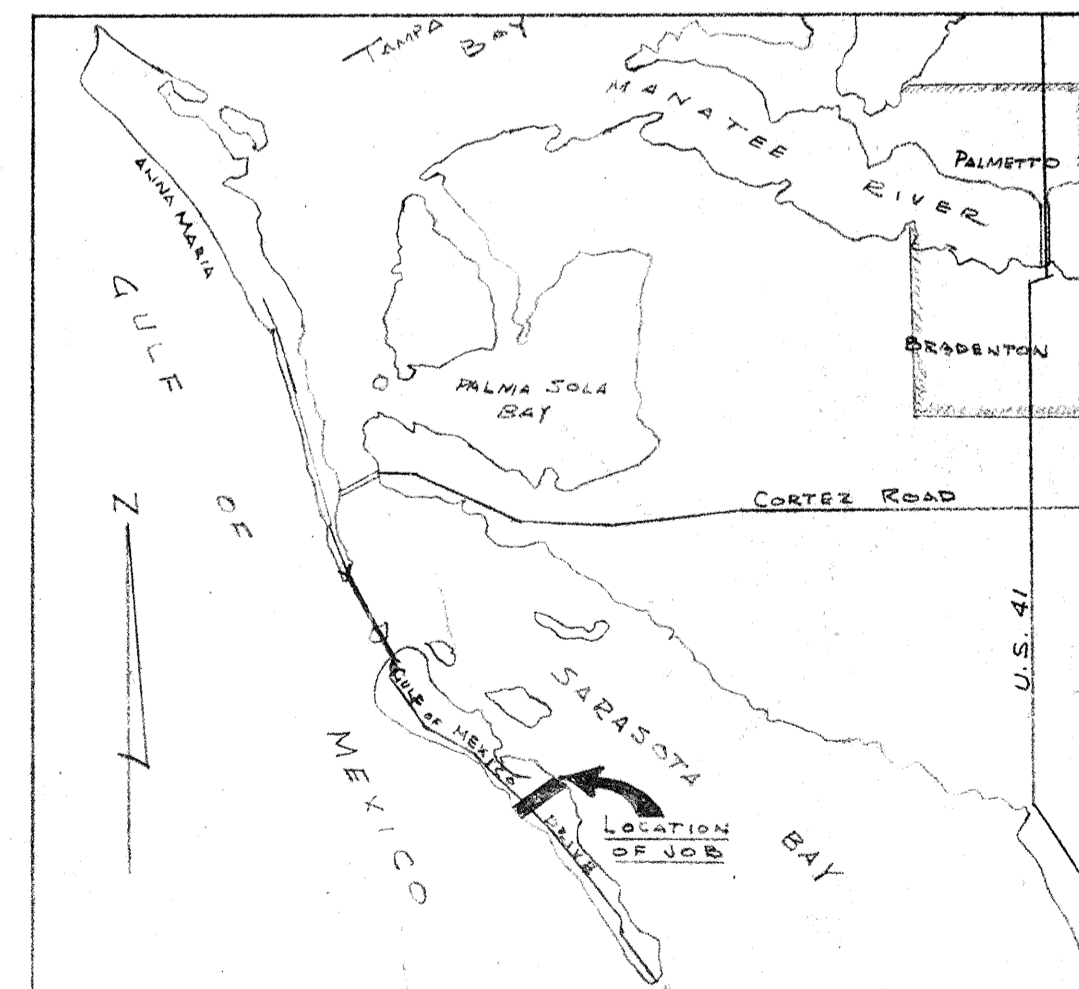
MOSBY ENGINEERING ASSOCIATES, INC., ENGINEERS
SARASOTA, FLORIDA



INDEX OF DRAWINGS:

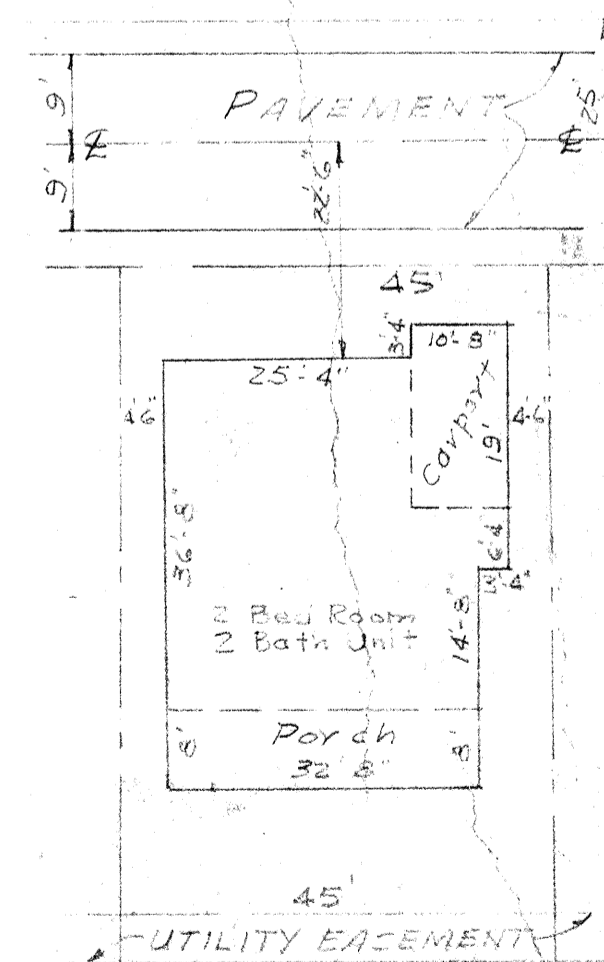
- | SHEET No. | NAME |
|------------------|----------------------------------|
| D-100 | Master Plan, Sewer & Water |
| D-101 | Typical Sections & Inlet details |
| D-201 thru D-208 | Plan and Profiles |
| D-103 | Seawall Details |
| W-200 | Distribution Details |
| S-200 | Sewerage Details |
| D-209 | Lift Station Details |

Note: Lots crosshatched in pairs are sites for duplex construction.



- LOCATION MAP -

No Scale



TYPICAL VILLA
SCALE: 1" = 20'

214 UNITS (9-6-66)

REVISION	DATE	DESCRIPTION	DRAWN
8-16-66		REVISED PRIMARY WATER PLAN FOR USE IN SEWER & WATER	L.L.S.
8-23-66		REVISION OF LOTS, SEWERS & WATER LINES	L.L.S.
11-1-66		REVISE LOCATIONS OF VILLAS & SEWER INTERVALS FOR DUPLEX	J.R.C.

SPANISH MAIN YACHT CLUB
A CONDOMINIUM IN SECS. 24, 25 & 26 T8S-09R-16E
MANATEE COUNTY, FLORIDA

MOSBY ENGINEERING ASSOCIATES, INC.
2259 BEE RIDGE ROAD SARASOTA, FLA.

SCALE: 1" = 100' DRN. BY: L.L.S.

DES. BY: CKD. BY:

APP. BY: *J.R. Strawn* 7-2-66
REG. ENG. NO. 8356 STATE OF FLORIDA

DATE: AUG. 16, 1966 JOB NO. 2789

TITLE: MASTER PLAN, SEWER & WATER

SHT. NO. D-100

PRINTS TO:	DATE: